

# Home data report

## 278 Royal Oaks Dr, Maryville, TN, US



**Total Area: 2392 sq. ft**

1st Floor: 1525 sq. ft, 2nd Floor: 867 sq. ft

Excluded: Garage 565 sq. ft, Screened porch 164 sq. ft, Open to below 469 sq. ft, Walls: 198 sq. ft

### Property summary

 **2** Floors

 **3** Bedrooms

 **2** Bathrooms

Home data report

## 278 Royal Oaks Dr, Maryville, TN, US



**1**  
Half baths



**1**  
Garages

# Home data report

## 278 Royal Oaks Dr, Maryville, TN, US



### Room dimensions

Floor 1

Total: 1525sqft

Excluded: 729sqft

#		Dimensions	sqft	Counted as living area
1	Kitchen	10'2" x 14'1"	143 sq. ft	Yes
2	Primary Bath	7'6" x 10'9"	81 sq. ft	Yes
3	Garage	22'3" x 25'9"	573 sq. ft	No
4	Dining Area	11'5" x 12'10"	146 sq. ft	Yes
5	Bath	3'3" x 8'0"	26 sq. ft	Yes
6	Living Room	18'0" x 19'5"	350 sq. ft	Yes
7	Bath	6'7" x 5'0"	33 sq. ft	Yes
8	Screened Porch	13'9" x 12'0"	164 sq. ft	No
9	Hall	10'2" x 15'7"	158 sq. ft	Yes
10	Primary Bedroom	16'11" x 23'3"	392 sq. ft	Yes
11	W.I.C.	7'10" x 7'5"	58 sq. ft	Yes

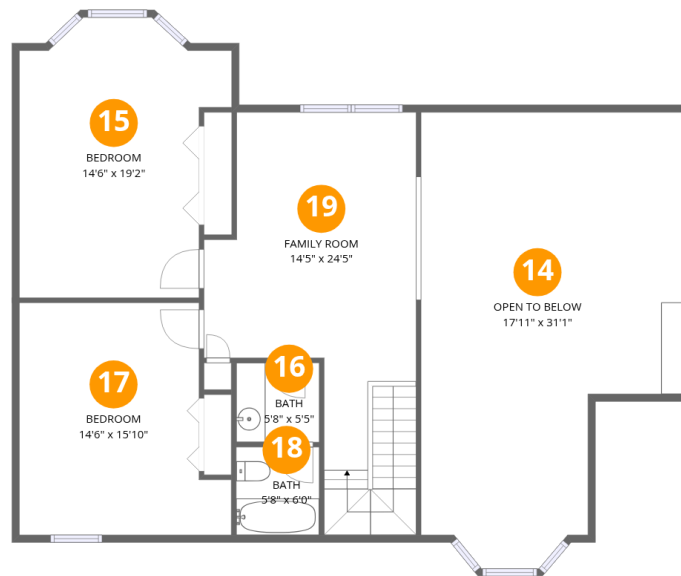
Scan captured on Tue, 07 Apr 2026 14:13:25 GMT

FLOOR PLAN CREATED BY CUBICASA APP. MEASUREMENTS ARE CONSIDERED RELIABLE BUT NOT ACCURATE.

Home data report

**278 Royal Oaks Dr, Maryville, TN, US**

#		Dimensions	sqft	Counted as living area
12	Laundry	7'9" x 12'0"	94 sq. ft	Yes
13	Breakfast Nook	16'2" x 11'4"	183 sq. ft	Yes



## Room dimensions

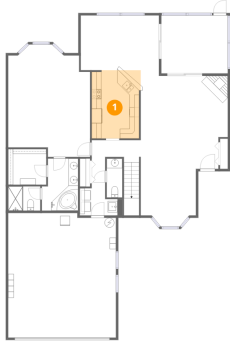
Floor 2

Total:867sqft

Excluded: 469sqft

#		Dimensions	sqft	Counted as living area
14	Open To Below	17'11" x 31'1"	558 sq. ft	No
15	Bedroom	14'6" x 19'2"	277 sq. ft	Yes
16	Bath	5'8" x 5'5"	30 sq. ft	Yes
17	Bedroom	14'6" x 15'10"	229 sq. ft	Yes
18	Bath	5'8" x 6'0"	34 sq. ft	Yes
19	Family Room	14'5" x 24'5"	352 sq. ft	Yes

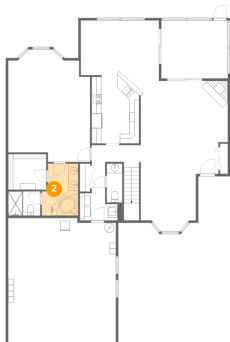
## 1 Floor 1 - Kitchen



Dimensions: 10'2" x 14'1"  
Area: 143 sq. ft  
Counted as living area: Yes

Heated: Yes  
Finished: Yes  
Enclosed: Yes  
Contiguous: Yes  
Permitted: Yes  
Wet space: No  
Addition: No  
Conversion: No

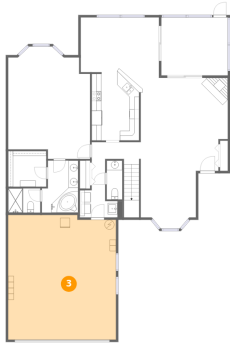
## 2 Floor 1 - Primary Bath



Dimensions: 7'6" x 10'9"  
Area: 81 sq. ft  
Counted as living area: Yes

Heated: Yes  
Finished: Yes  
Enclosed: Yes  
Contiguous: Yes  
Permitted: Yes  
Wet space: Yes  
Addition: No  
Conversion: No

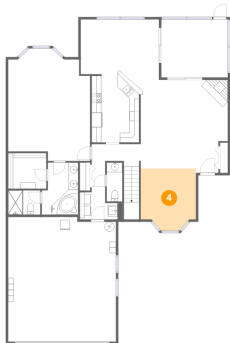
### 3 Floor 1 - Garage



Dimensions: 22'3" x 25'9"  
Area: 573 sq. ft  
Counted as living area: No

Heated: No  
Finished: No  
Enclosed: Yes  
Contiguous: Yes  
Permitted: Yes  
Wet space: No  
Addition: No  
Conversion: No

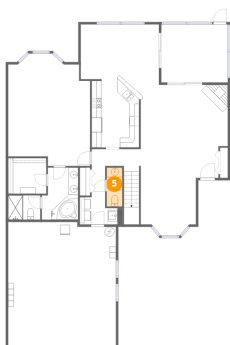
### 4 Floor 1 - Dining Area



Dimensions: 11'5" x 12'10"  
Area: 146 sq. ft  
Counted as living area: Yes

Heated: Yes  
Finished: Yes  
Enclosed: Yes  
Contiguous: Yes  
Permitted: Yes  
Wet space: No  
Addition: No  
Conversion: No

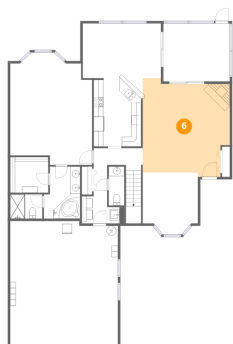
### 5 Floor 1 - Bath



Dimensions: 3'3" x 8'0"  
Area: 26 sq. ft  
Counted as living area: Yes

Heated: Yes  
Finished: Yes  
Enclosed: Yes  
Contiguous: Yes  
Permitted: Yes  
Wet space: Yes  
Addition: No  
Conversion: No

### 6 Floor 1 - Living Room



Dimensions: 18'0" x 19'5"  
Area: 350 sq. ft  
Counted as living area: Yes

Heated: Yes  
Finished: Yes  
Enclosed: Yes  
Contiguous: Yes  
Permitted: Yes  
Wet space: No  
Addition: No  
Conversion: No

### 7 Floor 1 - Bath



Dimensions: 6'7" x 5'0"  
Area: 33 sq. ft  
Counted as living area: Yes

Heated: Yes  
Finished: Yes  
Enclosed: Yes  
Contiguous: Yes  
Permitted: Yes  
Wet space: Yes  
Addition: No  
Conversion: No

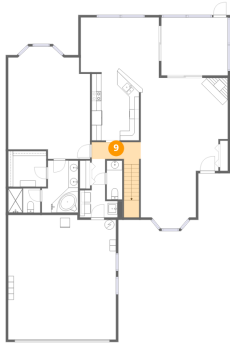
### 8 Floor 1 - Screened Porch



Dimensions: 13'9" x 12'0"  
Area: 164 sq. ft  
Counted as living area: No

Heated: No  
Finished: No  
Enclosed: No  
Contiguous: Yes  
Permitted: Yes  
Wet space: No  
Addition: No  
Conversion: No

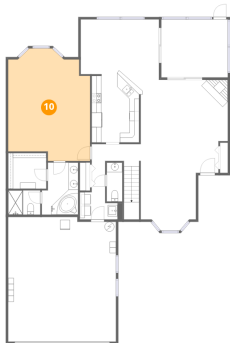
### 9 Floor 1 - Hall



Dimensions: 10'2" x 15'7"  
Area: 158 sq. ft  
Counted as living area: Yes

Heated: Yes  
Finished: Yes  
Enclosed: Yes  
Contiguous: Yes  
Permitted: Yes  
Wet space: No  
Addition: No  
Conversion: No

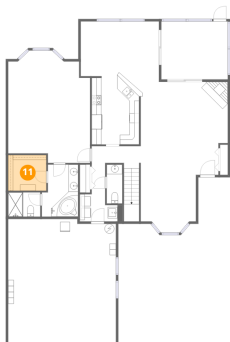
### 10 Floor 1 - Primary Bedroom



Dimensions: 16'11" x 23'3"  
Area: 392 sq. ft  
Counted as living area: Yes

Heated: Yes  
Finished: Yes  
Enclosed: Yes  
Contiguous: Yes  
Permitted: Yes  
Wet space: No  
Addition: No  
Conversion: No

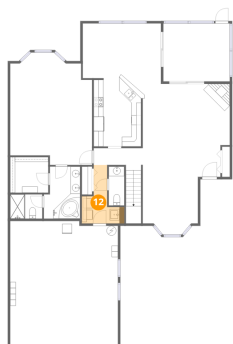
### 11 Floor 1 - W.I.C.



Dimensions: 7'10" x 7'5"  
Area: 58 sq. ft  
Counted as living area: Yes

Heated: Yes  
Finished: Yes  
Enclosed: Yes  
Contiguous: Yes  
Permitted: Yes  
Wet space: No  
Addition: No  
Conversion: No

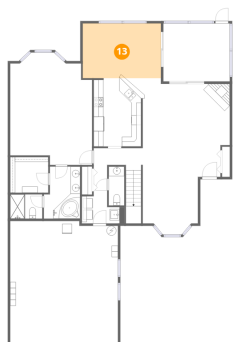
### 12 Floor 1 - Laundry



Dimensions: 7'9" x 12'0"  
Area: 94 sq. ft  
Counted as living area: Yes

Heated: Yes  
Finished: Yes  
Enclosed: Yes  
Contiguous: Yes  
Permitted: Yes  
Wet space: No  
Addition: No  
Conversion: No

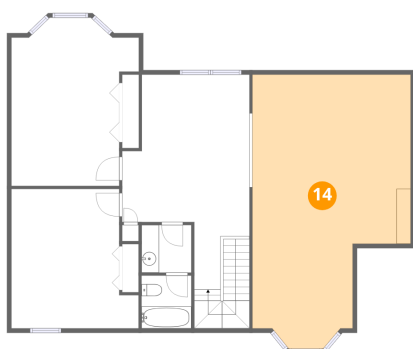
### 13 Floor 1 - Breakfast Nook



Dimensions: 16'2" x 11'4"  
Area: 183 sq. ft  
Counted as living area: Yes

Heated: Yes  
Finished: Yes  
Enclosed: Yes  
Contiguous: Yes  
Permitted: Yes  
Wet space: No  
Addition: No  
Conversion: No

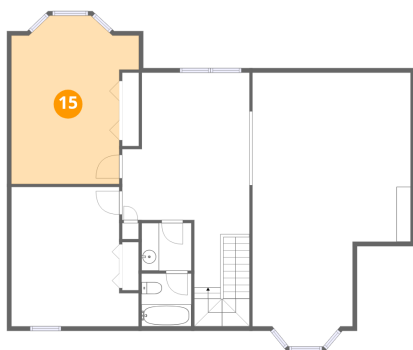
### 14 Floor 2 - Open To Below



Dimensions: 17'11" x 31'1"  
Area: 558 sq. ft  
Counted as living area: No

Heated: No  
Finished: No  
Enclosed: No  
Contiguous: Yes  
Permitted: No  
Wet space: No  
Addition: No  
Conversion: No

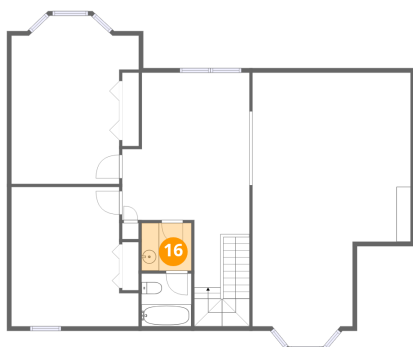
**15** Floor 2 - Bedroom



Dimensions: 14'6" x 19'2"  
Area: 277 sq. ft  
Counted as living area: Yes

Heated: Yes  
Finished: Yes  
Enclosed: Yes  
Contiguous: Yes  
Permitted: Yes  
Wet space: No  
Addition: No  
Conversion: No

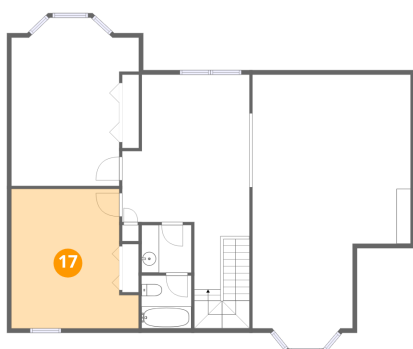
**16** Floor 2 - Bath



Dimensions: 5'8" x 5'5"  
Area: 30 sq. ft  
Counted as living area: Yes

Heated: Yes  
Finished: Yes  
Enclosed: Yes  
Contiguous: Yes  
Permitted: Yes  
Wet space: Yes  
Addition: No  
Conversion: No

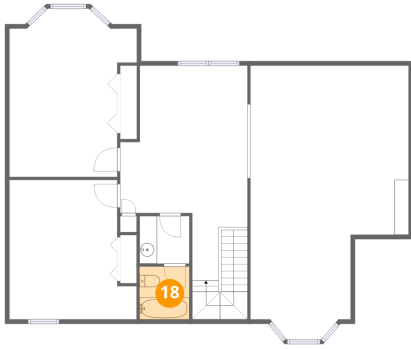
**17** Floor 2 - Bedroom



Dimensions: 14'6" x 15'10"  
Area: 229 sq. ft  
Counted as living area: Yes

Heated: Yes  
Finished: Yes  
Enclosed: Yes  
Contiguous: Yes  
Permitted: Yes  
Wet space: No  
Addition: No  
Conversion: No

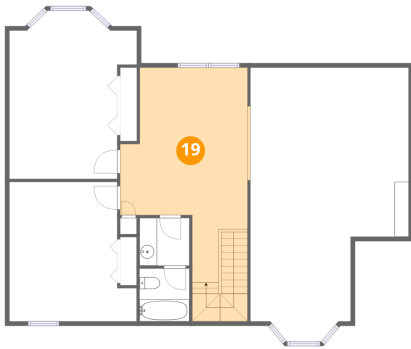
**18** Floor 2 - Bath



Dimensions: 5'8" x 6'0"  
Area: 34 sq. ft  
Counted as living area: Yes

Heated: Yes  
Finished: Yes  
Enclosed: Yes  
Contiguous: Yes  
Permitted: Yes  
Wet space: Yes  
Addition: No  
Conversion: No

**19** Floor 2 - Family Room



Dimensions: 14'5" x 24'5"  
Area: 352 sq. ft  
Counted as living area: Yes

Heated: Yes  
Finished: Yes  
Enclosed: Yes  
Contiguous: Yes  
Permitted: Yes  
Wet space: No  
Addition: No  
Conversion: No