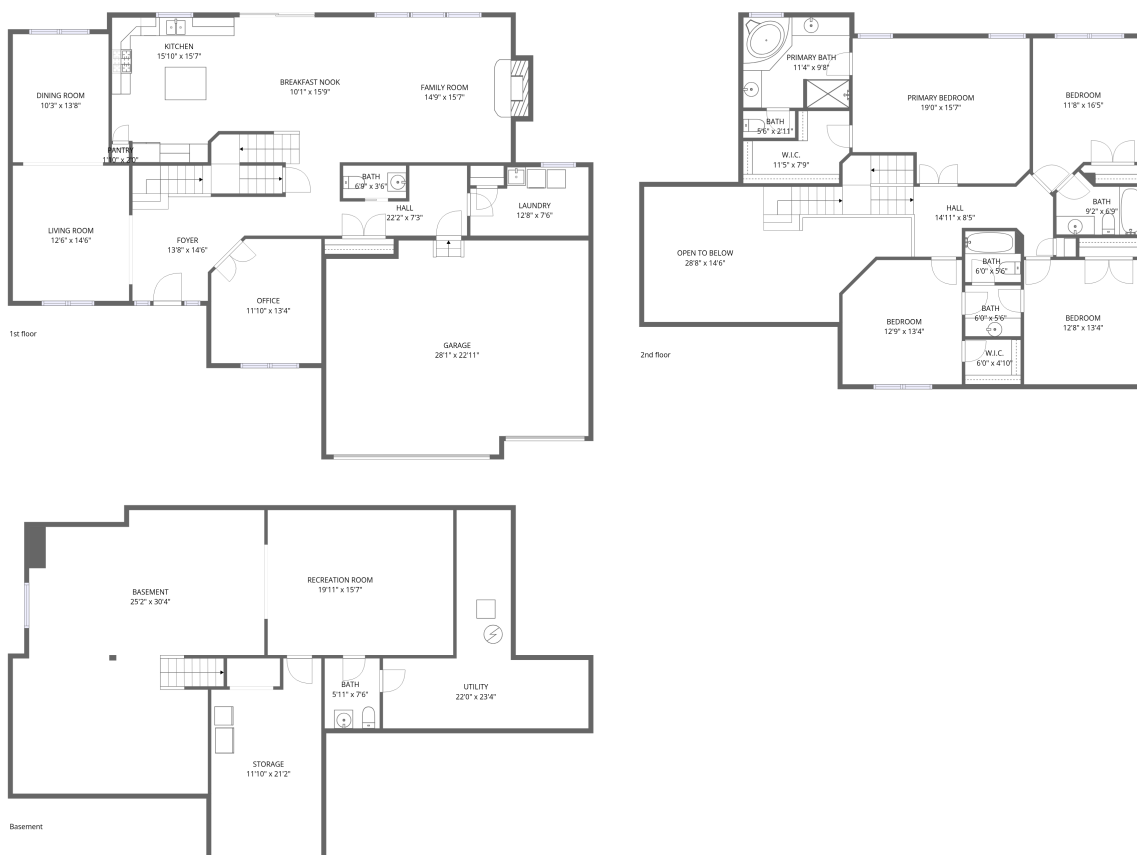


## Home data report

**39w490 South Mathewson Lane, Geneva, Kane County, Illinois,  
United States, 60134**



**Total Area: 4085 sq. ft**

Basement: 1089 sq. ft, 1st Floor: 1616 sq. ft, 2nd Floor: 1380 sq. ft


Excluded: Storage 224 sq. ft, Utility 256 sq. ft, Garage 610 sq. ft, Fireplace 13 sq. ft, Open to below 310 sq. ft, Walls: 321 sq. ft

## Property summary



Home data report

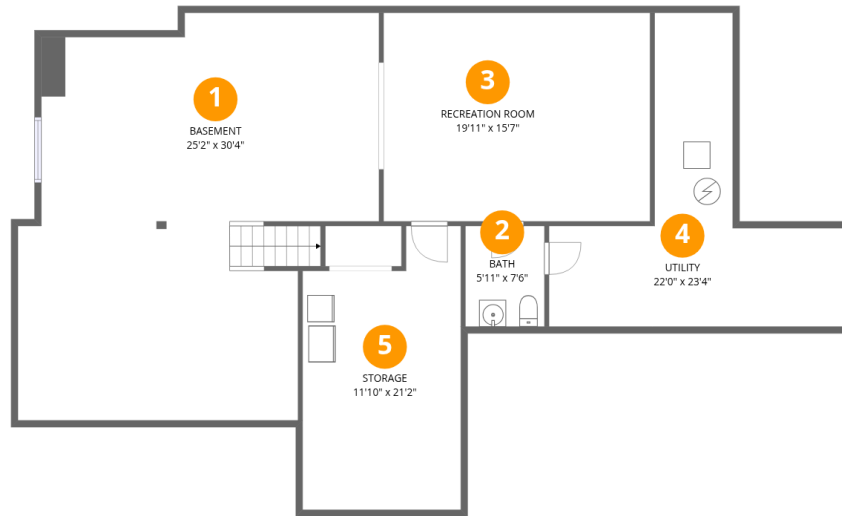
**39w490 South Mathewson Lane, Geneva, Kane County, Illinois,  
United States, 60134**

 **2**  
Half baths

 **1**  
Garages

## Home data report

**39w490 South Mathewson Lane, Geneva, Kane County, Illinois,  
United States, 60134**



## Room dimensions

Floor 1 Below grade

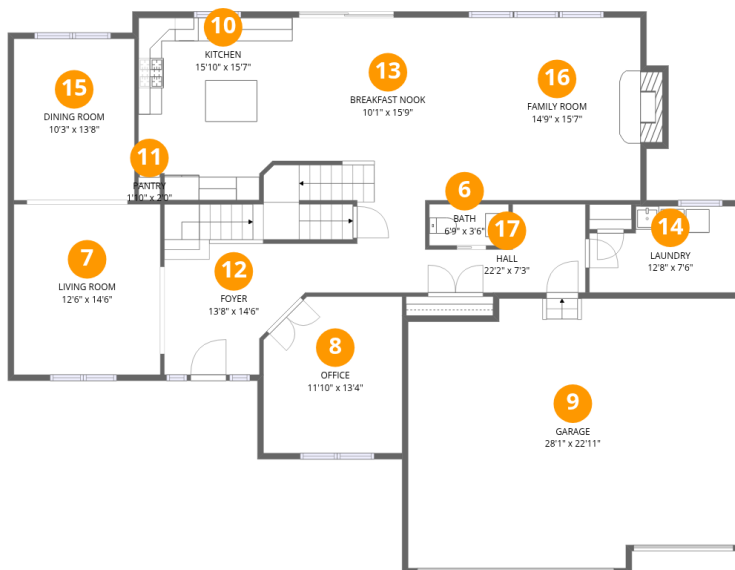
Total:1089sqft

Excluded: 480sqft

#		Dimensions	sqft	Counted as living area
1	Basement	25'2" x 30'4"	764 sq. ft	Yes
2	Bath	5'11" x 7'6"	44 sq. ft	Yes
3	Recreation Room	19'11" x 15'7"	309 sq. ft	Yes
4	Utility	22'0" x 23'4"	514 sq. ft	No
5	Storage	11'10" x 21'2"	250 sq. ft	No

Home data report

**39w490 South Mathewson Lane, Geneva, Kane County, Illinois, United States, 60134**



## Room dimensions

Floor 2

Total:1616sqft Excluded: 623sqft

#		Dimensions	sqft	Counted as living area
6	Bath	6'9" x 3'6"	24 sq. ft	Yes
7	Living Room	12'6" x 14'6"	181 sq. ft	Yes
8	Office	11'10" x 13'4"	157 sq. ft	Yes
9	Garage	28'1" x 22'11"	644 sq. ft	No
10	Kitchen	15'10" x 15'7"	246 sq. ft	Yes
11	Pantry	1'10" x 2'0"	4 sq. ft	Yes
12	Foyer	13'8" x 14'6"	198 sq. ft	Yes
13	Breakfast Nook	10'1" x 15'9"	159 sq. ft	Yes
14	Laundry	12'8" x 7'6"	95 sq. ft	Yes
15	Dining Room	10'3" x 13'8"	141 sq. ft	Yes
16	Family Room	14'9" x 15'7"	229 sq. ft	Yes

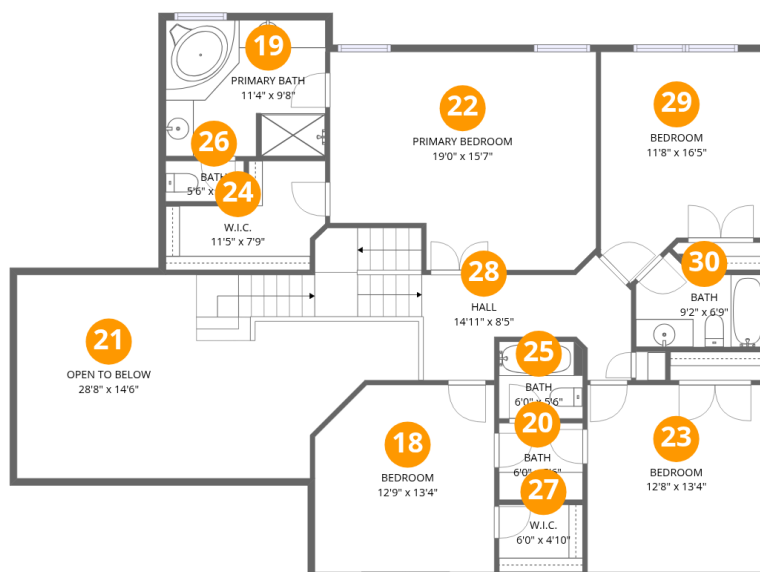
Home data report

**39w490 South Mathewson Lane, Geneva, Kane County, Illinois,  
United States, 60134**

#		Dimensions	sqft	Counted as living area
17	Hall	22'2" x 7'3"	161 sq. ft	Yes

## Home data report

**39w490 South Mathewson Lane, Geneva, Kane County, Illinois, United States, 60134**



## Room dimensions

Floor 3

Total:1380sqft

Excluded: 310sqft

#		Dimensions	sqft	Counted as living area
18	Bedroom	12'9" x 13'4"	170 sq. ft	Yes
19	Primary Bath	11'4" x 9'8"	110 sq. ft	Yes
20	Bath	6'0" x 5'6"	33 sq. ft	Yes
21	Open To Below	28'8" x 14'6"	415 sq. ft	No
22	Primary Bedroom	19'0" x 15'7"	295 sq. ft	Yes
23	Bedroom	12'8" x 13'4"	169 sq. ft	Yes
24	W.I.C.	11'5" x 7'9"	88 sq. ft	Yes
25	Bath	6'0" x 5'6"	33 sq. ft	Yes
26	Bath	5'6" x 2'11"	16 sq. ft	Yes
27	W.I.C.	6'0" x 4'10"	29 sq. ft	Yes
28	Hall	14'11" x 8'5"	126 sq. ft	Yes

Home data report

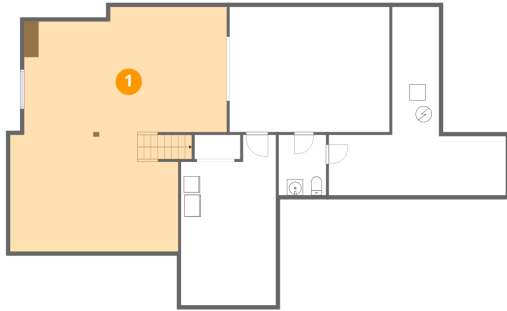
**39w490 South Mathewson Lane, Geneva, Kane County, Illinois,  
United States, 60134**

#		Dimensions	sqft	Counted as living area
29	Bedroom	11'8" x 16'5"	193 sq. ft	Yes
30	Bath	9'2" x 6'9"	62 sq. ft	Yes

39w490 South Mathewson Lane, Geneva, Kane County, Illinois,  
United States, 60134

1 Floor 1 - Basement

---

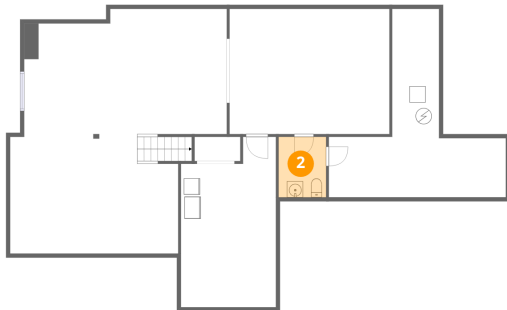


Dimensions: 25'2" x 30'4"  
Area: 764 sq. ft  
Counted as living area: Yes

Heated: Yes  
Finished: Yes  
Enclosed: Yes  
Contiguous: Yes  
Permitted: Yes  
Wet space: No  
Addition: No  
Conversion: No

2 Floor 1 - Bath

---

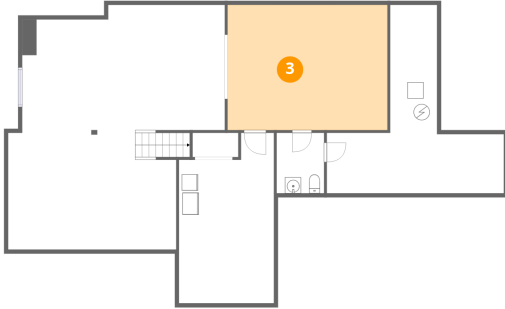


Dimensions: 5'11" x 7'6"  
Area: 44 sq. ft  
Counted as living area: Yes

Heated: Yes  
Finished: Yes  
Enclosed: Yes  
Contiguous: Yes  
Permitted: Yes  
Wet space: Yes  
Addition: No  
Conversion: No

39w490 South Mathewson Lane, Geneva, Kane County, Illinois,  
United States, 60134

**3** Floor 1 - Recreation Room



Dimensions: 19'11" x 15'7"  
Area: 309 sq. ft  
Counted as living area: Yes

Heated: Yes  
Finished: Yes  
Enclosed: Yes  
Contiguous: Yes  
Permitted: Yes  
Wet space: No  
Addition: No  
Conversion: No

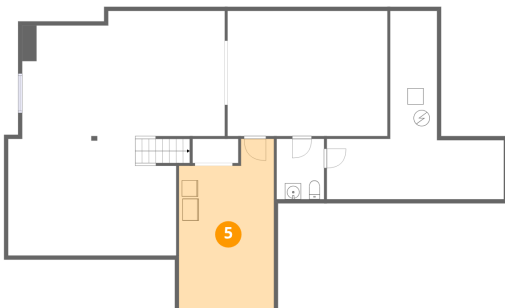
**4** Floor 1 - Utility



Dimensions: 22'0" x 23'4"  
Area: 514 sq. ft  
Counted as living area: No

Heated: Yes  
Finished: No  
Enclosed: Yes  
Contiguous: Yes  
Permitted: Yes  
Wet space: No  
Addition: No  
Conversion: No

**5** Floor 1 - Storage



Dimensions: 11'10" x 21'2"  
Area: 250 sq. ft  
Counted as living area: No

Heated: No  
Finished: No  
Enclosed: No  
Contiguous: Yes  
Permitted: Yes  
Wet space: No  
Addition: No  
Conversion: No

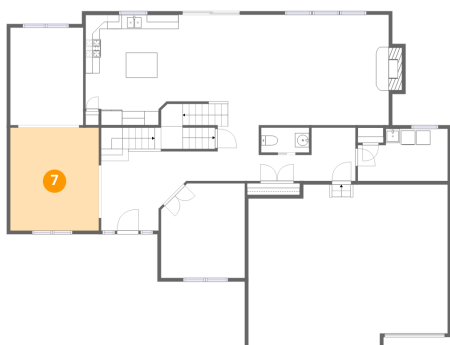
**6** Floor 2 - Bath



Dimensions: 6'9" x 3'6"  
Area: 24 sq. ft  
Counted as living area: Yes

Heated: Yes  
Finished: Yes  
Enclosed: Yes  
Contiguous: Yes  
Permitted: Yes  
Wet space: Yes  
Addition: No  
Conversion: No

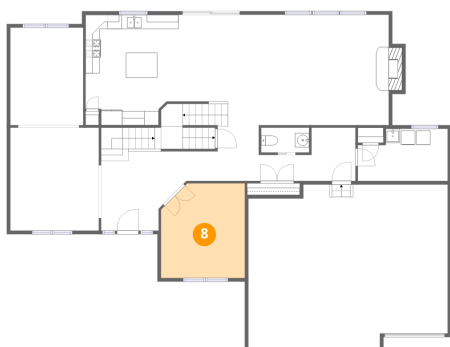
**7** Floor 2 - Living Room



Dimensions: 12'6" x 14'6"  
Area: 181 sq. ft  
Counted as living area: Yes

Heated: Yes  
Finished: Yes  
Enclosed: Yes  
Contiguous: Yes  
Permitted: Yes  
Wet space: No  
Addition: No  
Conversion: No

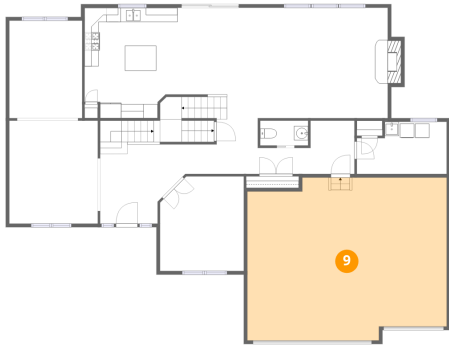
**8** Floor 2 - Office



Dimensions: 11'10" x 13'4"  
Area: 157 sq. ft  
Counted as living area: Yes

Heated: Yes  
Finished: Yes  
Enclosed: Yes  
Contiguous: Yes  
Permitted: Yes  
Wet space: No  
Addition: No  
Conversion: No

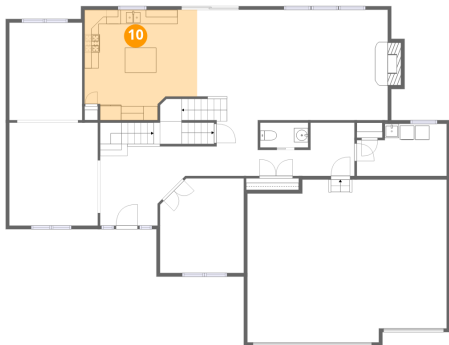
## 9 Floor 2 - Garage



Dimensions: 28'1" x 22'11"  
Area: 644 sq. ft  
Counted as living area: No

Heated: No  
Finished: No  
Enclosed: Yes  
Contiguous: Yes  
Permitted: Yes  
Wet space: No  
Addition: No  
Conversion: No

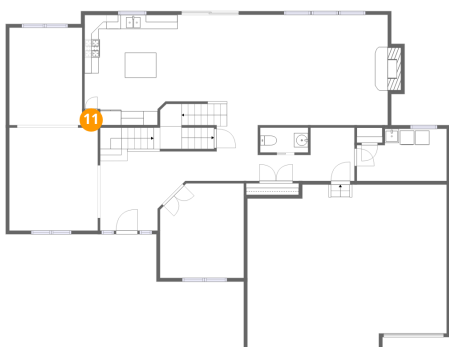
## 10 Floor 2 - Kitchen



Dimensions: 15'10" x 15'7"  
Area: 246 sq. ft  
Counted as living area: Yes

Heated: Yes  
Finished: Yes  
Enclosed: Yes  
Contiguous: Yes  
Permitted: Yes  
Wet space: No  
Addition: No  
Conversion: No

## 11 Floor 2 - Pantry



Dimensions: 1'10" x 2'0"  
Area: 4 sq. ft  
Counted as living area: Yes

Heated: Yes  
Finished: Yes  
Enclosed: Yes  
Contiguous: Yes  
Permitted: Yes  
Wet space: No  
Addition: No  
Conversion: No

39w490 South Mathewson Lane, Geneva, Kane County, Illinois,  
United States, 60134

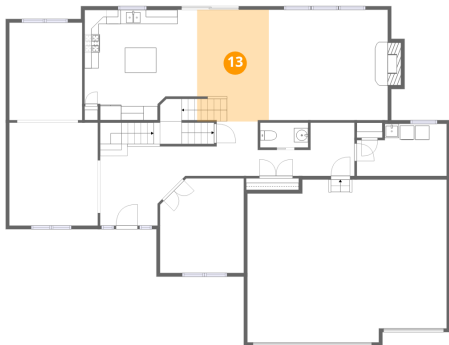
**12** Floor 2 - Foyer



Dimensions: 13'8" x 14'6"  
Area: 198 sq. ft  
Counted as living area: Yes

Heated: Yes  
Finished: Yes  
Enclosed: Yes  
Contiguous: Yes  
Permitted: Yes  
Wet space: No  
Addition: No  
Conversion: No

**13** Floor 2 - Breakfast Nook



Dimensions: 10'1" x 15'9"  
Area: 159 sq. ft  
Counted as living area: Yes

Heated: Yes  
Finished: Yes  
Enclosed: Yes  
Contiguous: Yes  
Permitted: Yes  
Wet space: No  
Addition: No  
Conversion: No

**14** Floor 2 - Laundry



Dimensions: 12'8" x 7'6"  
Area: 95 sq. ft  
Counted as living area: Yes

Heated: Yes  
Finished: Yes  
Enclosed: Yes  
Contiguous: Yes  
Permitted: Yes  
Wet space: No  
Addition: No  
Conversion: No

39w490 South Mathewson Lane, Geneva, Kane County, Illinois,  
United States, 60134

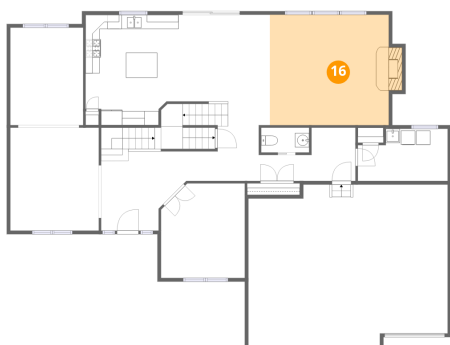
**15** Floor 2 - Dining Room



Dimensions: 10'3" x 13'8"  
Area: 141 sq. ft  
Counted as living area: Yes

Heated: Yes  
Finished: Yes  
Enclosed: Yes  
Contiguous: Yes  
Permitted: Yes  
Wet space: No  
Addition: No  
Conversion: No

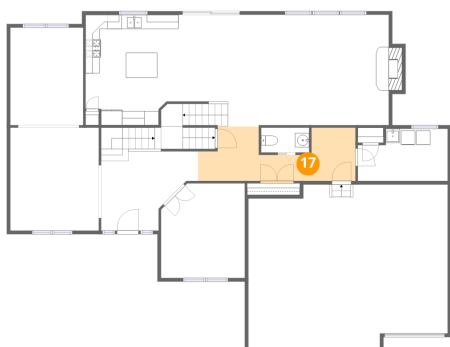
**16** Floor 2 - Family Room



Dimensions: 14'9" x 15'7"  
Area: 229 sq. ft  
Counted as living area: Yes

Heated: Yes  
Finished: Yes  
Enclosed: Yes  
Contiguous: Yes  
Permitted: Yes  
Wet space: No  
Addition: No  
Conversion: No

**17** Floor 2 - Hall

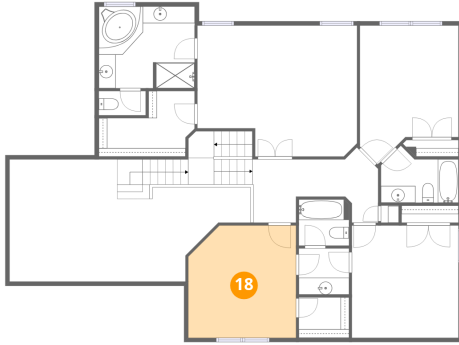


Dimensions: 22'2" x 7'3"  
Area: 161 sq. ft  
Counted as living area: Yes

Heated: Yes  
Finished: Yes  
Enclosed: Yes  
Contiguous: Yes  
Permitted: Yes  
Wet space: No  
Addition: No  
Conversion: No

39w490 South Mathewson Lane, Geneva, Kane County, Illinois,  
United States, 60134

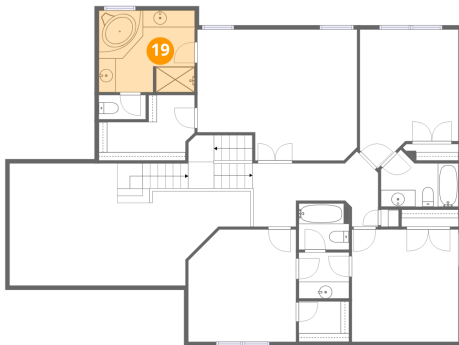
**18** Floor 3 - Bedroom



Dimensions: 12'9" x 13'4"  
Area: 170 sq. ft  
Counted as living area: Yes

Heated: Yes  
Finished: Yes  
Enclosed: Yes  
Contiguous: Yes  
Permitted: Yes  
Wet space: No  
Addition: No  
Conversion: No

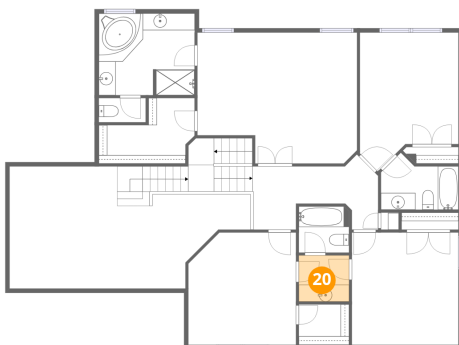
**19** Floor 3 - Primary Bath



Dimensions: 11'4" x 9'8"  
Area: 110 sq. ft  
Counted as living area: Yes

Heated: Yes  
Finished: Yes  
Enclosed: Yes  
Contiguous: Yes  
Permitted: Yes  
Wet space: Yes  
Addition: No  
Conversion: No

**20** Floor 3 - Bath

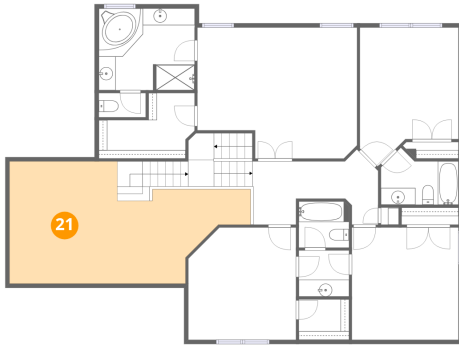


Dimensions: 6'0" x 5'6"  
Area: 33 sq. ft  
Counted as living area: Yes

Heated: Yes  
Finished: Yes  
Enclosed: Yes  
Contiguous: Yes  
Permitted: Yes  
Wet space: Yes  
Addition: No  
Conversion: No

39w490 South Mathewson Lane, Geneva, Kane County, Illinois,  
United States, 60134

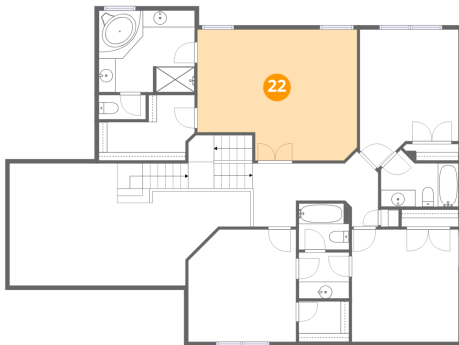
**21** Floor 3 - Open To Below



Dimensions: 28'8" x 14'6"  
Area: 415 sq. ft  
Counted as living area: No

Heated: No  
Finished: No  
Enclosed: No  
Contiguous: Yes  
Permitted: No  
Wet space: No  
Addition: No  
Conversion: No

**22** Floor 3 - Primary Bedroom



Dimensions: 19'0" x 15'7"  
Area: 295 sq. ft  
Counted as living area: Yes

Heated: Yes  
Finished: Yes  
Enclosed: Yes  
Contiguous: Yes  
Permitted: Yes  
Wet space: No  
Addition: No  
Conversion: No

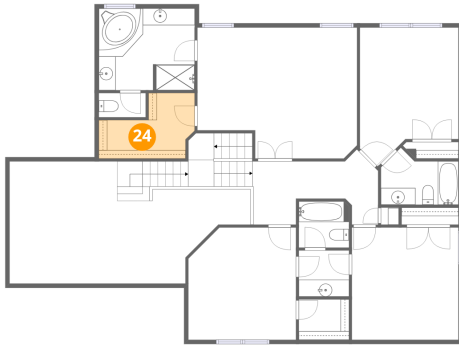
**23** Floor 3 - Bedroom



Dimensions: 12'8" x 13'4"  
Area: 169 sq. ft  
Counted as living area: Yes

Heated: Yes  
Finished: Yes  
Enclosed: Yes  
Contiguous: Yes  
Permitted: Yes  
Wet space: No  
Addition: No  
Conversion: No

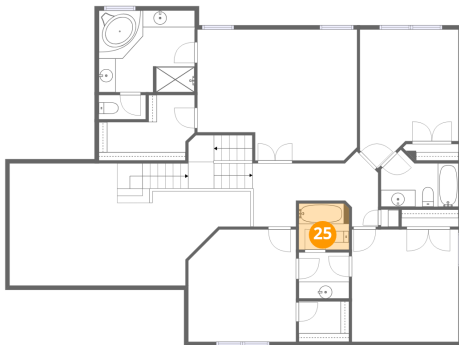
**24** Floor 3 - W.I.C.



Dimensions: 11'5" x 7'9"  
Area: 88 sq. ft  
Counted as living area: Yes

Heated: Yes  
Finished: Yes  
Enclosed: Yes  
Contiguous: Yes  
Permitted: Yes  
Wet space: No  
Addition: No  
Conversion: No

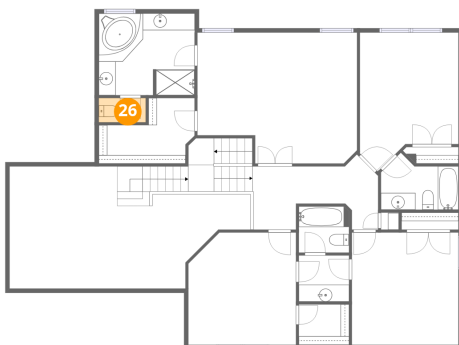
**25** Floor 3 - Bath



Dimensions: 6'0" x 5'6"  
Area: 33 sq. ft  
Counted as living area: Yes

Heated: Yes  
Finished: Yes  
Enclosed: Yes  
Contiguous: Yes  
Permitted: Yes  
Wet space: Yes  
Addition: No  
Conversion: No

**26** Floor 3 - Bath

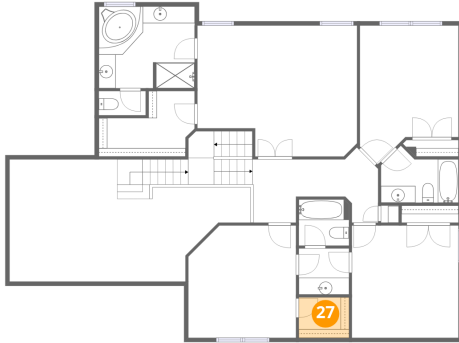


Dimensions: 5'6" x 2'11"  
Area: 16 sq. ft  
Counted as living area: Yes

Heated: Yes  
Finished: Yes  
Enclosed: Yes  
Contiguous: Yes  
Permitted: Yes  
Wet space: Yes  
Addition: No  
Conversion: No

39w490 South Mathewson Lane, Geneva, Kane County, Illinois,  
United States, 60134

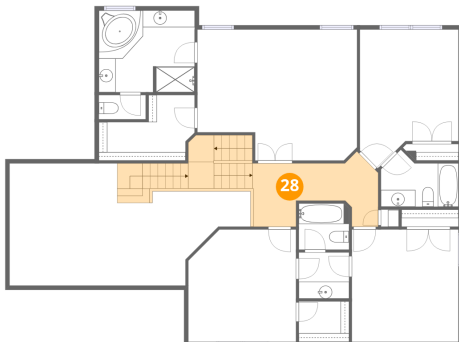
**27** Floor 3 - W.I.C.



Dimensions: 6'0" x 4'10"  
Area: 29 sq. ft  
Counted as living area: Yes

Heated: Yes  
Finished: Yes  
Enclosed: Yes  
Contiguous: Yes  
Permitted: Yes  
Wet space: No  
Addition: No  
Conversion: No

**28** Floor 3 - Hall



Dimensions: 14'11" x 8'5"  
Area: 126 sq. ft  
Counted as living area: Yes

Heated: Yes  
Finished: Yes  
Enclosed: Yes  
Contiguous: Yes  
Permitted: Yes  
Wet space: No  
Addition: No  
Conversion: No

**29** Floor 3 - Bedroom



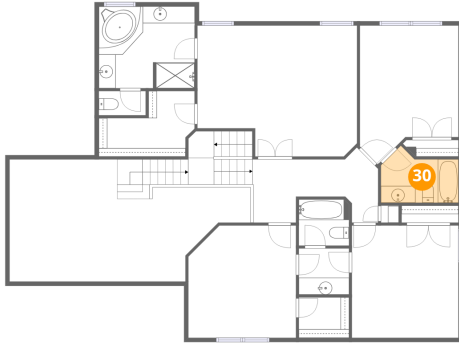
Dimensions: 11'8" x 16'5"  
Area: 193 sq. ft  
Counted as living area: Yes

Heated: Yes  
Finished: Yes  
Enclosed: Yes  
Contiguous: Yes  
Permitted: Yes  
Wet space: No  
Addition: No  
Conversion: No

Home data report

39w490 South Mathewson Lane, Geneva, Kane County, Illinois,  
United States, 60134

**30** Floor 3 - Bath



Dimensions: 9'2" x 6'9"  
Area: 62 sq. ft  
Counted as living area: Yes

Heated: Yes  
Finished: Yes  
Enclosed: Yes  
Contiguous: Yes  
Permitted: Yes  
Wet space: Yes  
Addition: No  
Conversion: No