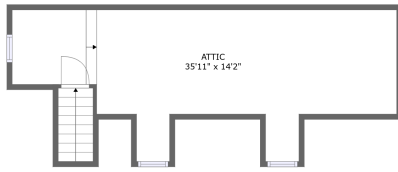


Home report

Alabama Highway 5, Jasper, Walker County, Alabama, United States, 35501, 163 Tucker Road, Jasper, Al 35504



FLOOR 2



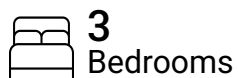
FLOOR 1

Total Area: 3114 sq. ft

Floor 1: 3089 sq. ft, Floor 2: 25 sq. ft

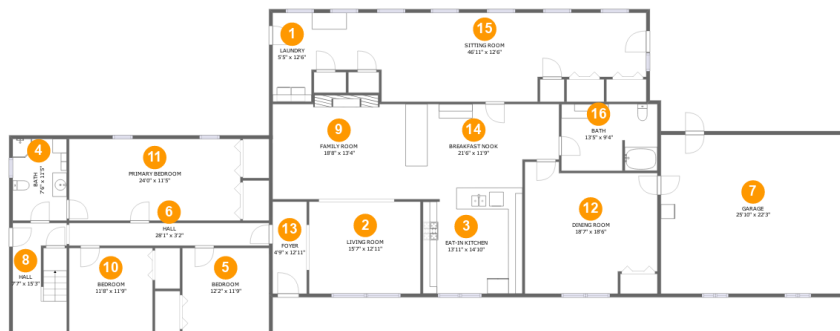
Excluded: Garage 576 sq. ft, Low ceiling 90 sq. ft, Attic 266 sq. ft, Walls: 232 sq. ft

Property summary



Home report

Alabama Highway 5, Jasper, Walker County, Alabama, United States, 35501, 163 Tucker Road, Jasper, Al 35504



Room dimensions

Floor 1

Total:3089sqft

Excluded: 576sqft

#		Max Dimensions	sqft	Included
1	Laundry	5'5" x 12'6"	68 sq. ft	Yes
2	Living Room	15'7" x 12'11"	201 sq. ft	Yes
3	Eat-in Kitchen	13'11" x 14'10"	199 sq. ft	Yes
4	Bath	7'6" x 11'5"	87 sq. ft	Yes
5	Bedroom	12'2" x 11'9"	143 sq. ft	Yes
6	Hall	28'1" x 3'2"	89 sq. ft	Yes
7	Garage	25'10" x 22'3"	576 sq. ft	No
8	Hall	7'7" x 15'3"	102 sq. ft	Yes
9	Family Room	18'8" x 13'4"	261 sq. ft	Yes
10	Bedroom	11'8" x 11'9"	138 sq. ft	Yes
11	Primary Bedroom	24'0" x 11'5"	275 sq. ft	Yes

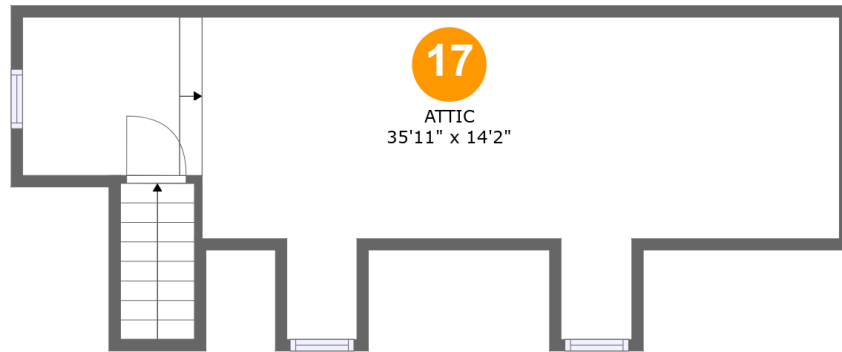
Home report

Alabama Highway 5, Jasper, Walker County, Alabama, United States, 35501, 163 Tucker Road, Jasper, Al 35504

#		Max Dimensions	sqft	Included
12	Dining Room	18'7" x 18'6"	304 sq. ft	Yes
13	Foyer	4'9" x 12'11"	62 sq. ft	Yes
14	Breakfast Nook	21'6" x 11'9"	243 sq. ft	Yes
15	Sitting Room	46'11" x 12'6"	491 sq. ft	Yes
16	Bath	13'5" x 9'4"	124 sq. ft	Yes

Home report

Alabama Highway 5, Jasper, Walker County, Alabama, United States, 35501, 163 Tucker Road, Jasper, Al 35504



Room dimensions

Floor 2

Total:25sqft

Excluded: 356sqft

#		Max Dimensions	sqft	Included
17	Attic	35'11" x 14'2"	266 sq. ft	No

Alabama Highway 5, Jasper, Walker County, Alabama, United States, 35501, 163 Tucker Road, Jasper, Al 35504

1 Floor 1 - Laundry



Max Dimensions: 5'5" x 12'6"
Calculated Area: 68 sq. ft
Included: Yes

Heated: Yes
Finished: Yes
Enclosed: Yes
Contiguous: Yes
Permitted: Yes
Wet space: No
Addition: No
Conversion: No

2 Floor 1 - Living Room

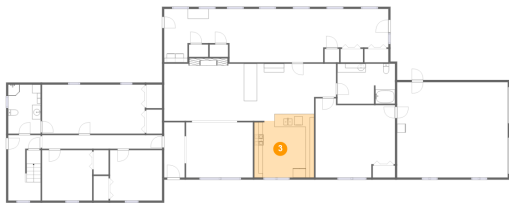


Max Dimensions: 15'7" x 12'11"
Calculated Area: 201 sq. ft
Included: Yes

Heated: Yes
Finished: Yes
Enclosed: Yes
Contiguous: Yes
Permitted: Yes
Wet space: No
Addition: No
Conversion: No

Alabama Highway 5, Jasper, Walker County, Alabama, United States, 35501, 163 Tucker Road, Jasper, Al 35504

3 Floor 1 - Eat-in Kitchen



Max Dimensions: 13'11" x 14'10"
Calculated Area: 199 sq. ft
Included: Yes

Heated: Yes
Finished: Yes
Enclosed: Yes
Contiguous: Yes
Permitted: Yes
Wet space: No
Addition: No
Conversion: No

4 Floor 1 - Bath



Max Dimensions: 7'6" x 11'5"
Calculated Area: 87 sq. ft
Included: Yes

Heated: Yes
Finished: Yes
Enclosed: Yes
Contiguous: Yes
Permitted: Yes
Wet space: Yes
Addition: No
Conversion: No

5 Floor 1 - Bedroom



Max Dimensions: 12'2" x 11'9"
Calculated Area: 143 sq. ft
Included: Yes

Heated: Yes
Finished: Yes
Enclosed: Yes
Contiguous: Yes
Permitted: Yes
Wet space: No
Addition: No
Conversion: No

Alabama Highway 5, Jasper, Walker County, Alabama, United States, 35501, 163 Tucker Road, Jasper, Al 35504

6 Floor 1 - Hall



Max Dimensions: 28'1" x 3'2"
Calculated Area: 89 sq. ft
Included: Yes

Heated: Yes
Finished: Yes
Enclosed: Yes
Contiguous: Yes
Permitted: Yes
Wet space: No
Addition: No
Conversion: No

7 Floor 1 - Garage



Max Dimensions: 25'10" x 22'3"
Calculated Area: 576 sq. ft
Included: No

Heated: No
Finished: No
Enclosed: Yes
Contiguous: Yes
Permitted: Yes
Wet space: No
Addition: No
Conversion: No

8 Floor 1 - Hall

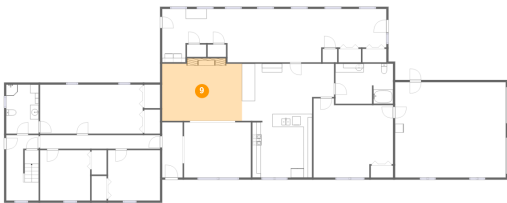


Max Dimensions: 7'7" x 15'3"
Calculated Area: 102 sq. ft
Included: Yes

Heated: Yes
Finished: Yes
Enclosed: Yes
Contiguous: Yes
Permitted: Yes
Wet space: No
Addition: No
Conversion: No

Alabama Highway 5, Jasper, Walker County, Alabama, United States, 35501, 163 Tucker Road, Jasper, Al 35504

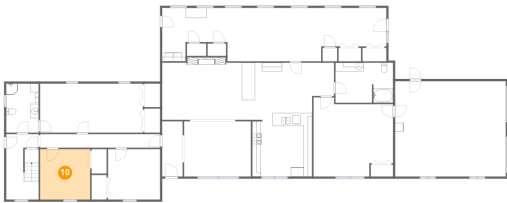
9 Floor 1 - Family Room



Max Dimensions: 18'8" x 13'4"
Calculated Area: 261 sq. ft
Included: Yes

Heated: Yes
Finished: Yes
Enclosed: Yes
Contiguous: Yes
Permitted: Yes
Wet space: No
Addition: No
Conversion: No

10 Floor 1 - Bedroom



Max Dimensions: 11'8" x 11'9"
Calculated Area: 138 sq. ft
Included: Yes

Heated: Yes
Finished: Yes
Enclosed: Yes
Contiguous: Yes
Permitted: Yes
Wet space: No
Addition: No
Conversion: No

11 Floor 1 - Primary Bedroom



Max Dimensions: 24'0" x 11'5"
Calculated Area: 275 sq. ft
Included: Yes

Heated: Yes
Finished: Yes
Enclosed: Yes
Contiguous: Yes
Permitted: Yes
Wet space: No
Addition: No
Conversion: No

Alabama Highway 5, Jasper, Walker County, Alabama, United States, 35501, 163 Tucker Road, Jasper, Al 35504

12 Floor 1 - Dining Room



Max Dimensions: 18'7" x 18'6"
Calculated Area: 304 sq. ft
Included: Yes

Heated: Yes
Finished: Yes
Enclosed: Yes
Contiguous: Yes
Permitted: Yes
Wet space: No
Addition: No
Conversion: No

13 Floor 1 - Foyer



Max Dimensions: 4'9" x 12'11"
Calculated Area: 62 sq. ft
Included: Yes

Heated: Yes
Finished: Yes
Enclosed: Yes
Contiguous: Yes
Permitted: Yes
Wet space: No
Addition: No
Conversion: No

14 Floor 1 - Breakfast Nook



Max Dimensions: 21'6" x 11'9"
Calculated Area: 243 sq. ft
Included: Yes

Heated: Yes
Finished: Yes
Enclosed: Yes
Contiguous: Yes
Permitted: Yes
Wet space: No
Addition: No
Conversion: No

Alabama Highway 5, Jasper, Walker County, Alabama, United States, 35501, 163 Tucker Road, Jasper, Al 35504

15 Floor 1 - Sitting Room



Max Dimensions: 46'11" x 12'6"
Calculated Area: 491 sq. ft
Included: Yes

Heated: Yes
Finished: Yes
Enclosed: Yes
Contiguous: Yes
Permitted: Yes
Wet space: No
Addition: No
Conversion: No

16 Floor 1 - Bath



Max Dimensions: 13'5" x 9'4"
Calculated Area: 124 sq. ft
Included: Yes

Heated: Yes
Finished: Yes
Enclosed: Yes
Contiguous: Yes
Permitted: Yes
Wet space: Yes
Addition: No
Conversion: No

17 Floor 2 - Attic



Max Dimensions: 35'11" x 14'2"
Calculated Area: 266 sq. ft
Included: No

Heated: No
Finished: No
Enclosed: Yes
Contiguous: Yes
Permitted: Yes
Wet space: No
Addition: No
Conversion: No