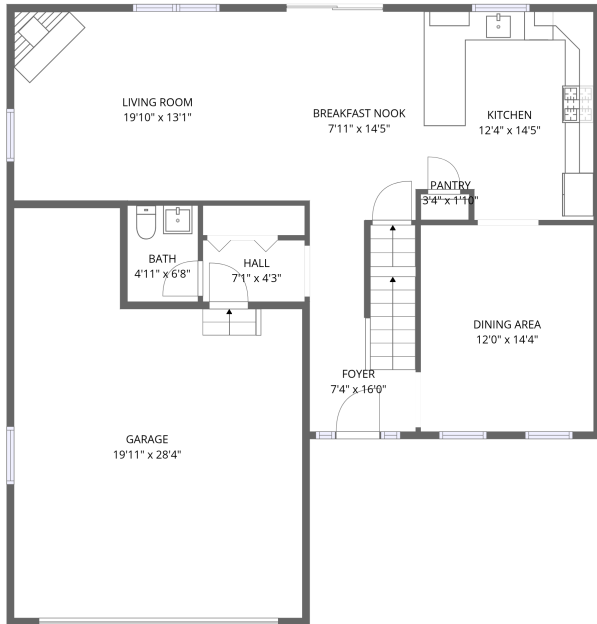
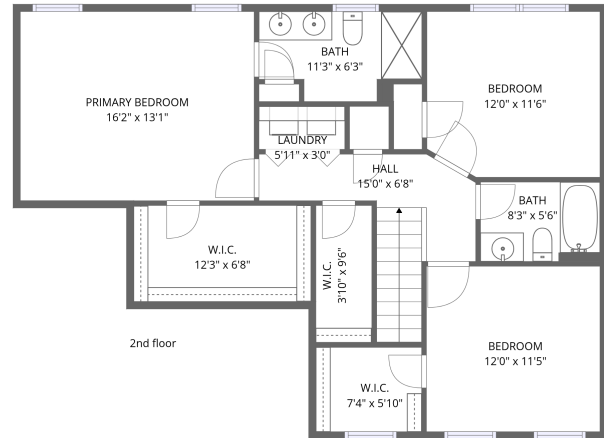


Home data report

## 2 Twin Pines Drive, Wallingford, CT, US



1st floor



2nd floor

**Total Area: 1852 sq. ft**

1st Floor: 926 sq. ft, 2nd Floor: 926 sq. ft

Excluded: Garage 478 sq. ft, Walls: 171 sq. ft

### Property summary



Home data report

## 2 Twin Pines Drive, Wallingford, CT, US

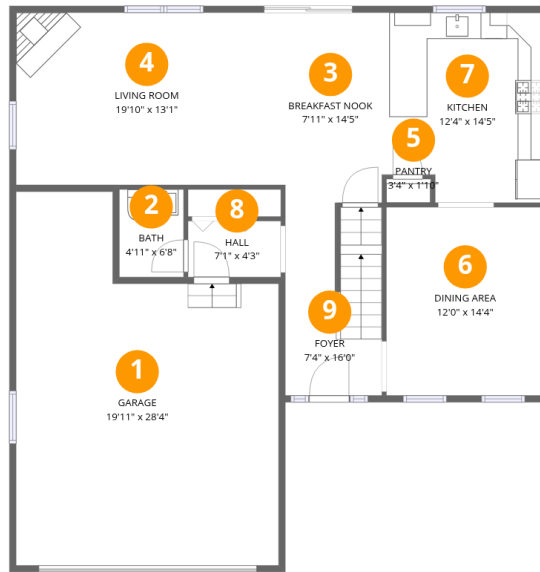


**1**  
Half baths



**1**  
Garages

## 2 Twin Pines Drive, Wallingford, CT, US



### Room dimensions

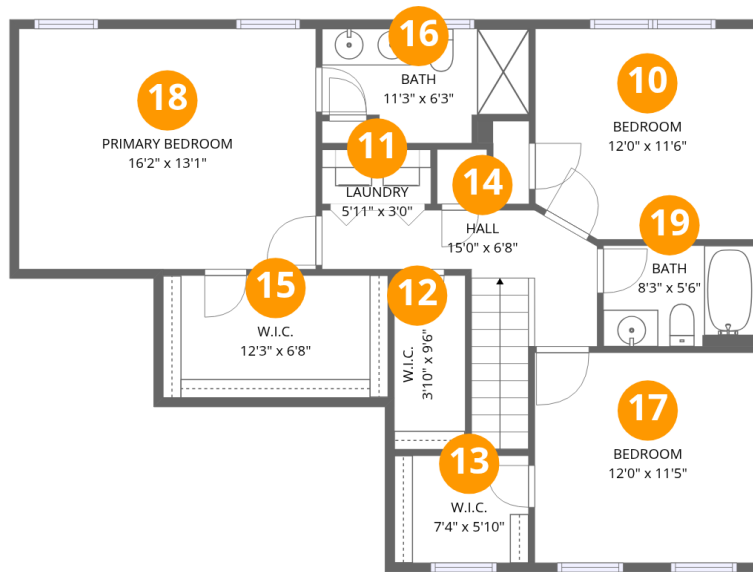
Floor 1

Total: 926 sqft

Excluded: 478 sqft

#		Dimensions	sqft	Counted as living area
1	Garage	19'11" x 28'4"	566 sq. ft	No
2	Bath	4'11" x 6'8"	32 sq. ft	Yes
3	Breakfast Nook	7'11" x 14'5"	114 sq. ft	Yes
4	Living Room	19'10" x 13'1"	259 sq. ft	Yes
5	Pantry	3'4" x 1'10"	6 sq. ft	Yes
6	Dining Area	12'0" x 14'4"	171 sq. ft	Yes
7	Kitchen	12'4" x 14'5"	177 sq. ft	Yes
8	Hall	7'1" x 4'3"	30 sq. ft	Yes
9	Foyer	7'4" x 16'0"	117 sq. ft	Yes

2 Twin Pines Drive, Wallingford, CT, US



Room dimensions

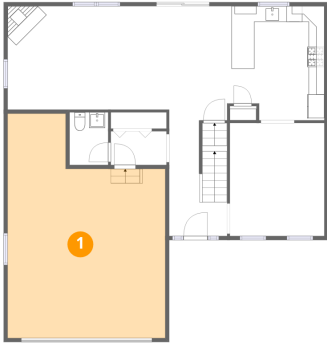
Floor 2

Total: 926 sqft

Excluded: 0 sqft

#		Dimensions	sqft	Counted as living area
10	Bedroom	12'0" x 11'6"	137 sq. ft	Yes
11	Laundry	5'11" x 3'0"	18 sq. ft	Yes
12	W.I.C.	3'10" x 9'6"	37 sq. ft	Yes
13	W.I.C.	7'4" x 5'10"	43 sq. ft	Yes
14	Hall	15'0" x 6'8"	100 sq. ft	Yes
15	W.I.C.	12'3" x 6'8"	82 sq. ft	Yes
16	Bath	11'3" x 6'3"	70 sq. ft	Yes
17	Bedroom	12'0" x 11'5"	137 sq. ft	Yes
18	Primary Bedroom	16'2" x 13'1"	212 sq. ft	Yes
19	Bath	8'3" x 5'6"	45 sq. ft	Yes

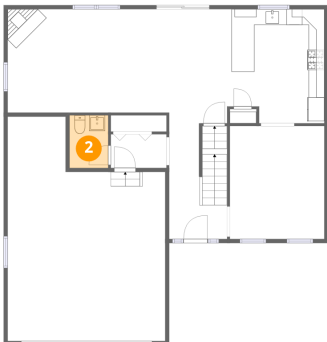
## 1 Floor 1 - Garage



Dimensions: 19'11" x 28'4"  
Area: 566 sq. ft  
Counted as living area: No

Heated: No  
Finished: No  
Enclosed: Yes  
Contiguous: Yes  
Permitted: Yes  
Wet space: No  
Addition: No  
Conversion: No

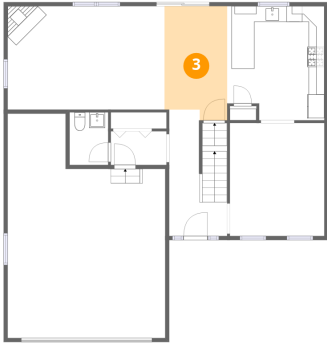
## 2 Floor 1 - Bath



Dimensions: 4'11" x 6'8"  
Area: 32 sq. ft  
Counted as living area: Yes

Heated: Yes  
Finished: Yes  
Enclosed: Yes  
Contiguous: Yes  
Permitted: Yes  
Wet space: Yes  
Addition: No  
Conversion: No

### 3 Floor 1 - Breakfast Nook



Dimensions: 7'11" x 14'5"  
Area: 114 sq. ft  
Counted as living area: Yes

Heated: Yes  
Finished: Yes  
Enclosed: Yes  
Contiguous: Yes  
Permitted: Yes  
Wet space: No  
Addition: No  
Conversion: No

### 4 Floor 1 - Living Room



Dimensions: 19'10" x 13'1"  
Area: 259 sq. ft  
Counted as living area: Yes

Heated: Yes  
Finished: Yes  
Enclosed: Yes  
Contiguous: Yes  
Permitted: Yes  
Wet space: No  
Addition: No  
Conversion: No

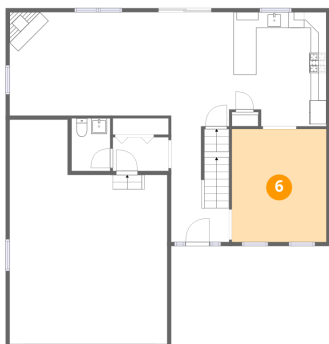
### 5 Floor 1 - Pantry



Dimensions: 3'4" x 1'10"  
Area: 6 sq. ft  
Counted as living area: Yes

Heated: Yes  
Finished: Yes  
Enclosed: Yes  
Contiguous: Yes  
Permitted: Yes  
Wet space: No  
Addition: No  
Conversion: No

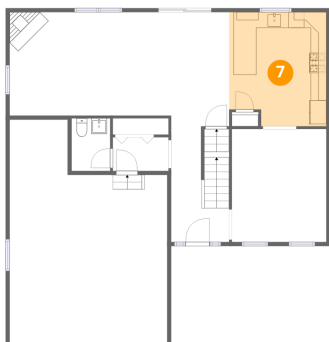
## 6 Floor 1 - Dining Area



Dimensions: 12'0" x 14'4"  
Area: 171 sq. ft  
Counted as living area: Yes

Heated: Yes  
Finished: Yes  
Enclosed: Yes  
Contiguous: Yes  
Permitted: Yes  
Wet space: No  
Addition: No  
Conversion: No

## 7 Floor 1 - Kitchen



Dimensions: 12'4" x 14'5"  
Area: 177 sq. ft  
Counted as living area: Yes

Heated: Yes  
Finished: Yes  
Enclosed: Yes  
Contiguous: Yes  
Permitted: Yes  
Wet space: No  
Addition: No  
Conversion: No

## 8 Floor 1 - Hall



Dimensions: 7'1" x 4'3"  
Area: 30 sq. ft  
Counted as living area: Yes

Heated: Yes  
Finished: Yes  
Enclosed: Yes  
Contiguous: Yes  
Permitted: Yes  
Wet space: No  
Addition: No  
Conversion: No

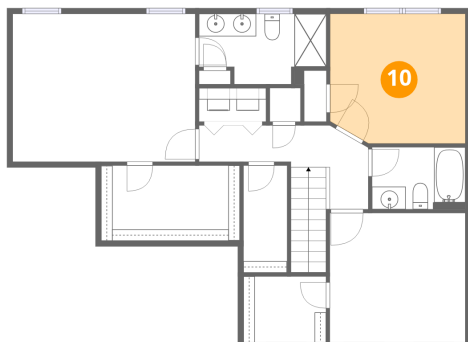
**9** Floor 1 - Foyer



Dimensions: 7'4" x 16'0"  
Area: 117 sq. ft  
Counted as living area: Yes

Heated: Yes  
Finished: Yes  
Enclosed: Yes  
Contiguous: Yes  
Permitted: Yes  
Wet space: No  
Addition: No  
Conversion: No

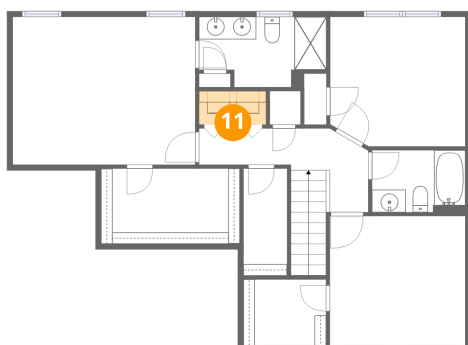
**10** Floor 2 - Bedroom



Dimensions: 12'0" x 11'6"  
Area: 137 sq. ft  
Counted as living area: Yes

Heated: Yes  
Finished: Yes  
Enclosed: Yes  
Contiguous: Yes  
Permitted: Yes  
Wet space: No  
Addition: No  
Conversion: No

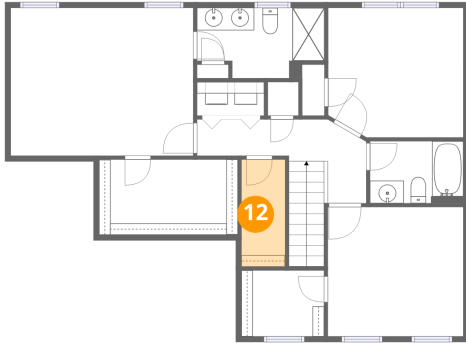
**11** Floor 2 - Laundry



Dimensions: 5'11" x 3'0"  
Area: 18 sq. ft  
Counted as living area: Yes

Heated: Yes  
Finished: Yes  
Enclosed: Yes  
Contiguous: Yes  
Permitted: Yes  
Wet space: No  
Addition: No  
Conversion: No

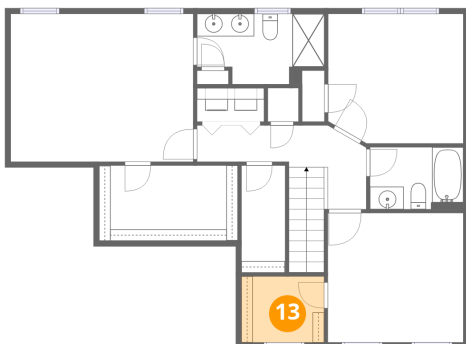
**12** Floor 2 - W.I.C.



Dimensions: 3'10" x 9'6"  
Area: 37 sq. ft  
Counted as living area: Yes

Heated: Yes  
Finished: Yes  
Enclosed: Yes  
Contiguous: Yes  
Permitted: Yes  
Wet space: No  
Addition: No  
Conversion: No

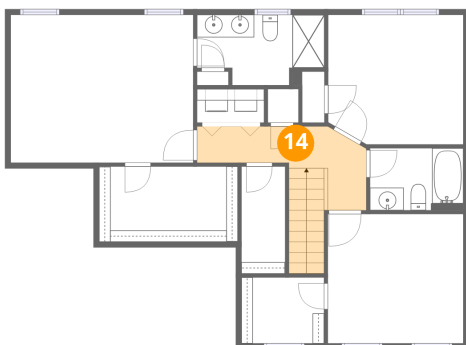
**13** Floor 2 - W.I.C.



Dimensions: 7'4" x 5'10"  
Area: 43 sq. ft  
Counted as living area: Yes

Heated: Yes  
Finished: Yes  
Enclosed: Yes  
Contiguous: Yes  
Permitted: Yes  
Wet space: No  
Addition: No  
Conversion: No

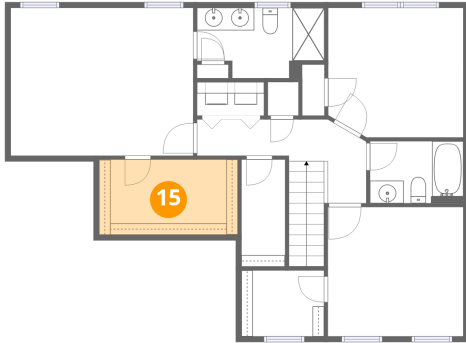
**14** Floor 2 - Hall



Dimensions: 15'0" x 6'8"  
Area: 100 sq. ft  
Counted as living area: Yes

Heated: Yes  
Finished: Yes  
Enclosed: Yes  
Contiguous: Yes  
Permitted: Yes  
Wet space: No  
Addition: No  
Conversion: No

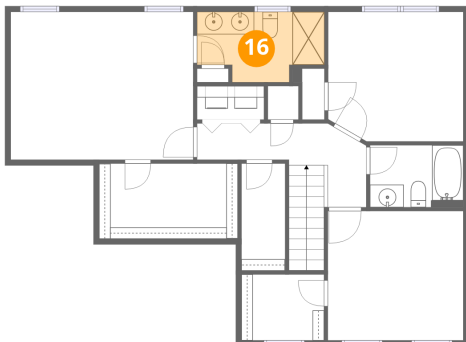
**15** Floor 2 - W.I.C.



Dimensions: 12'3" x 6'8"  
Area: 82 sq. ft  
Counted as living area: Yes

Heated: Yes  
Finished: Yes  
Enclosed: Yes  
Contiguous: Yes  
Permitted: Yes  
Wet space: No  
Addition: No  
Conversion: No

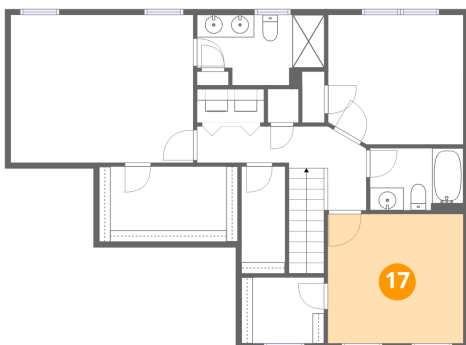
**16** Floor 2 - Bath



Dimensions: 11'3" x 6'3"  
Area: 70 sq. ft  
Counted as living area: Yes

Heated: Yes  
Finished: Yes  
Enclosed: Yes  
Contiguous: Yes  
Permitted: Yes  
Wet space: Yes  
Addition: No  
Conversion: No

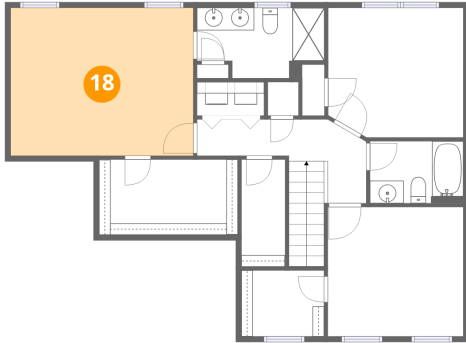
**17** Floor 2 - Bedroom



Dimensions: 12'0" x 11'5"  
Area: 137 sq. ft  
Counted as living area: Yes

Heated: Yes  
Finished: Yes  
Enclosed: Yes  
Contiguous: Yes  
Permitted: Yes  
Wet space: No  
Addition: No  
Conversion: No

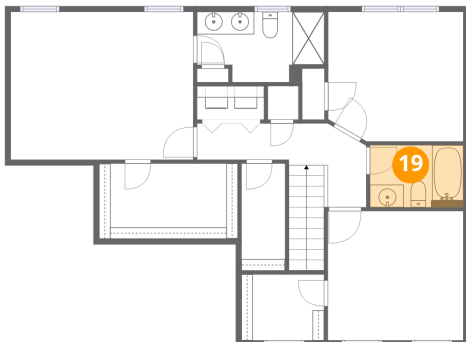
**18** Floor 2 - Primary Bedroom



Dimensions: 16'2" x 13'1"  
Area: 212 sq. ft  
Counted as living area: Yes

Heated: Yes  
Finished: Yes  
Enclosed: Yes  
Contiguous: Yes  
Permitted: Yes  
Wet space: No  
Addition: No  
Conversion: No

**19** Floor 2 - Bath



Dimensions: 8'3" x 5'6"  
Area: 45 sq. ft  
Counted as living area: Yes

Heated: Yes  
Finished: Yes  
Enclosed: Yes  
Contiguous: Yes  
Permitted: Yes  
Wet space: Yes  
Addition: No  
Conversion: No