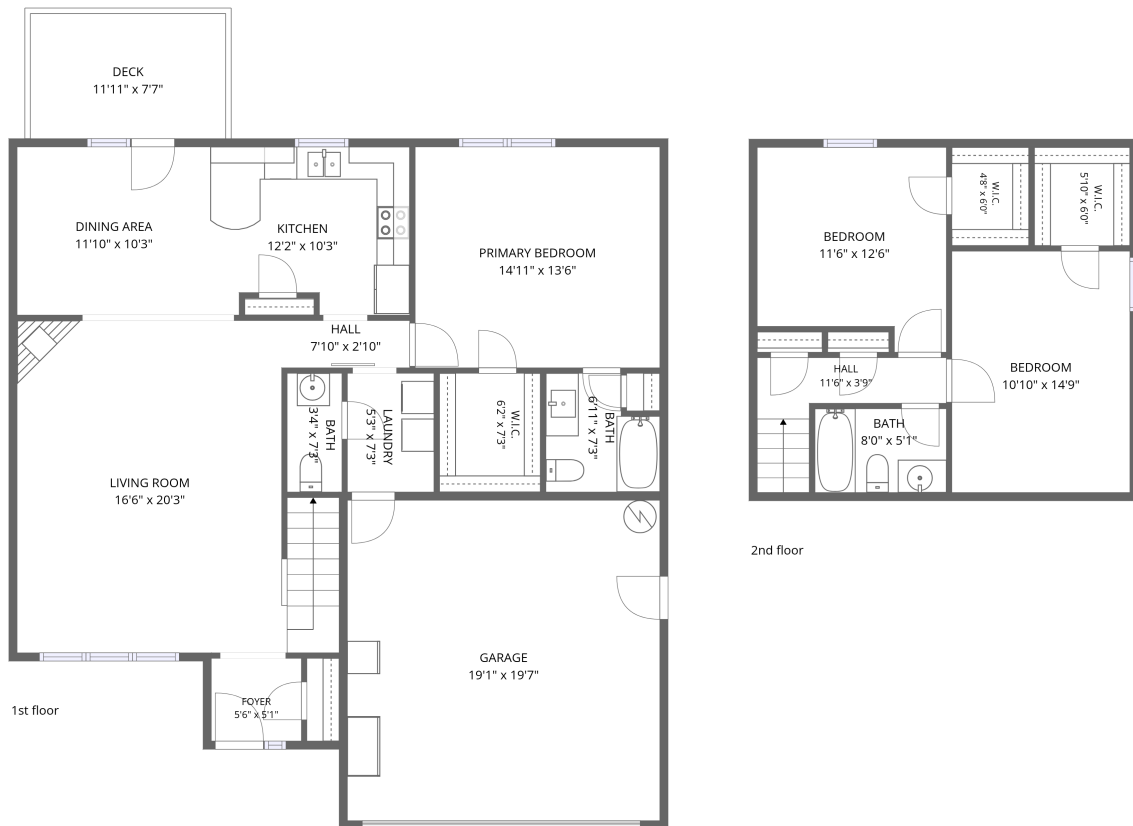


Home data report

7101 Pinecroft Ln, Knoxville, TN, US



Total Area: 1539 sq. ft

1st Floor: 1060 sq. ft, 2nd Floor: 479 sq. ft

Excluded: Deck 91 sq. ft, Garage 372 sq. ft, Walls: 143 sq. ft

Property summary

 **2** Floors

 **3** Bedrooms

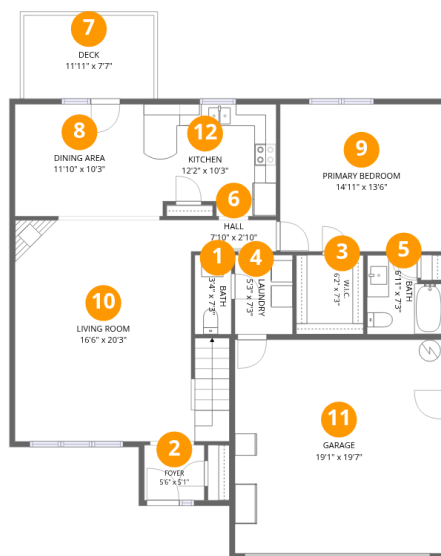
 **2** Bathrooms

Home data report

7101 Pinecroft Ln, Knoxville, TN, US

 **1**
Half baths

 **1**
Garages



Room dimensions

Floor 1

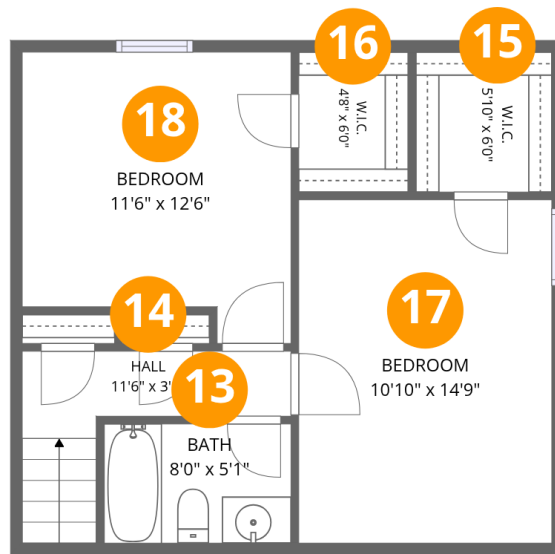
Total:1060sqft Excluded: 463sqft

#		Dimensions	sqft	Counted as living area
1	Bath	3'4" x 7'3"	24 sq. ft	Yes
2	Foyer	5'6" x 5'1"	28 sq. ft	Yes
3	W.I.C.	6'2" x 7'3"	45 sq. ft	Yes
4	Laundry	5'3" x 7'3"	38 sq. ft	Yes
5	Bath	6'11" x 7'3"	44 sq. ft	Yes
6	Hall	7'10" x 2'10"	23 sq. ft	Yes
7	Deck	11'11" x 7'7"	91 sq. ft	No
8	Dining Area	11'10" x 10'3"	121 sq. ft	Yes
9	Primary Bedroom	14'11" x 13'6"	201 sq. ft	Yes
10	Living Room	16'6" x 20'3"	359 sq. ft	Yes
11	Garage	19'1" x 19'7"	372 sq. ft	No

Home data report

7101 Pinecroft Ln, Knoxville, TN, US

#		Dimensions	sqft	Counted as living area
12	Kitchen	12'2" x 10'3"	118 sq. ft	Yes



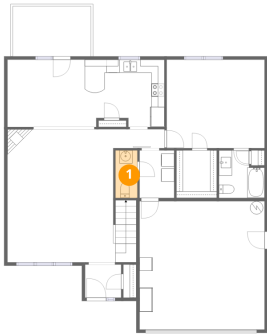
Room dimensions

Floor 2

Total:479sqft Excluded: 0sqft

#		Dimensions	sqft	Counted as living area
13	Bath	8'0" x 5'1"	41 sq. ft	Yes
14	Hall	11'6" x 3'9"	49 sq. ft	Yes
15	W.I.C.	5'10" x 6'0"	35 sq. ft	Yes
16	W.I.C.	4'8" x 6'0"	28 sq. ft	Yes
17	Bedroom	10'10" x 14'9"	160 sq. ft	Yes
18	Bedroom	11'6" x 12'6"	131 sq. ft	Yes

1 Floor 1 - Bath



Dimensions: 3'4" x 7'3"
Area: 24 sq. ft
Counted as living area: Yes

Heated: Yes
Finished: Yes
Enclosed: Yes
Contiguous: Yes
Permitted: Yes
Wet space: Yes
Addition: No
Conversion: No

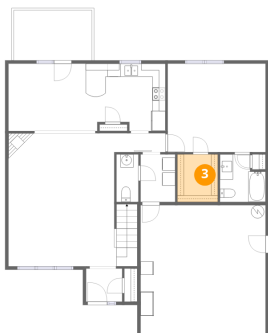
2 Floor 1 - Foyer



Dimensions: 5'6" x 5'1"
Area: 28 sq. ft
Counted as living area: Yes

Heated: Yes
Finished: Yes
Enclosed: Yes
Contiguous: Yes
Permitted: Yes
Wet space: No
Addition: No
Conversion: No

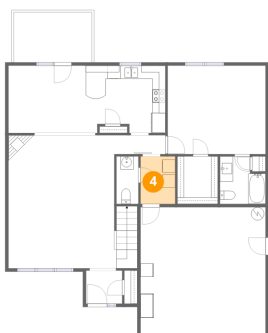
3 Floor 1 - W.I.C.



Dimensions: 6'2" x 7'3"
Area: 45 sq. ft
Counted as living area: Yes

Heated: Yes
Finished: Yes
Enclosed: Yes
Contiguous: Yes
Permitted: Yes
Wet space: No
Addition: No
Conversion: No

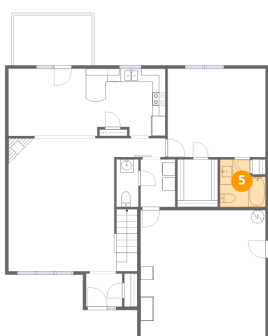
4 Floor 1 - Laundry



Dimensions: 5'3" x 7'3"
Area: 38 sq. ft
Counted as living area: Yes

Heated: Yes
Finished: Yes
Enclosed: Yes
Contiguous: Yes
Permitted: Yes
Wet space: No
Addition: No
Conversion: No

5 Floor 1 - Bath



Dimensions: 6'11" x 7'3"
Area: 44 sq. ft
Counted as living area: Yes

Heated: Yes
Finished: Yes
Enclosed: Yes
Contiguous: Yes
Permitted: Yes
Wet space: Yes
Addition: No
Conversion: No

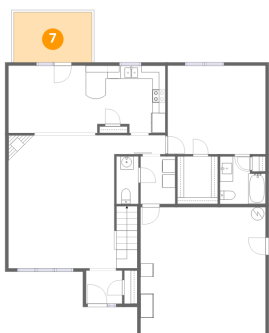
6 Floor 1 - Hall



Dimensions: 7'10" x 2'10"
Area: 23 sq. ft
Counted as living area: Yes

Heated: Yes
Finished: Yes
Enclosed: Yes
Contiguous: Yes
Permitted: Yes
Wet space: No
Addition: No
Conversion: No

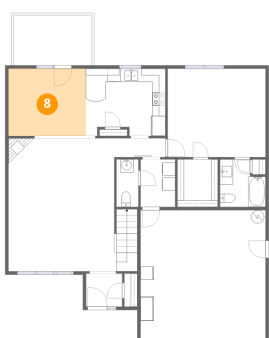
7 Floor 1 - Deck



Dimensions: 11'11" x 7'7"
Area: 91 sq. ft
Counted as living area: No

Heated: No
Finished: No
Enclosed: No
Contiguous: Yes
Permitted: Yes
Wet space: No
Addition: No
Conversion: No

8 Floor 1 - Dining Area



Dimensions: 11'10" x 10'3"
Area: 121 sq. ft
Counted as living area: Yes

Heated: Yes
Finished: Yes
Enclosed: Yes
Contiguous: Yes
Permitted: Yes
Wet space: No
Addition: No
Conversion: No

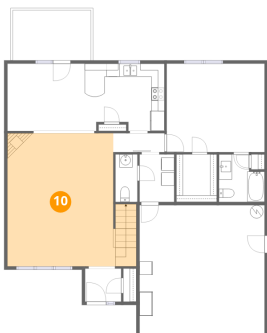
9 Floor 1 - Primary Bedroom



Dimensions: 14'11" x 13'6"
Area: 201 sq. ft
Counted as living area: Yes

Heated: Yes
Finished: Yes
Enclosed: Yes
Contiguous: Yes
Permitted: Yes
Wet space: No
Addition: No
Conversion: No

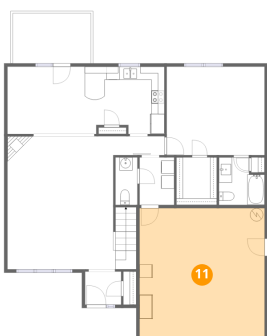
10 Floor 1 - Living Room



Dimensions: 16'6" x 20'3"
Area: 359 sq. ft
Counted as living area: Yes

Heated: Yes
Finished: Yes
Enclosed: Yes
Contiguous: Yes
Permitted: Yes
Wet space: No
Addition: No
Conversion: No

11 Floor 1 - Garage



Dimensions: 19'1" x 19'7"
Area: 372 sq. ft
Counted as living area: No

Heated: No
Finished: No
Enclosed: Yes
Contiguous: Yes
Permitted: Yes
Wet space: No
Addition: No
Conversion: No

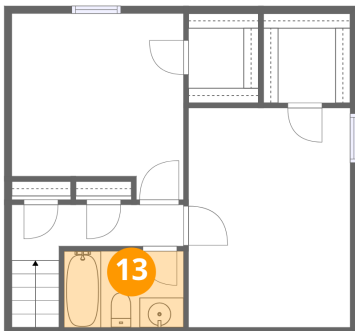
12 Floor 1 - Kitchen



Dimensions: 12'2" x 10'3"
Area: 118 sq. ft
Counted as living area: Yes

Heated: Yes
Finished: Yes
Enclosed: Yes
Contiguous: Yes
Permitted: Yes
Wet space: No
Addition: No
Conversion: No

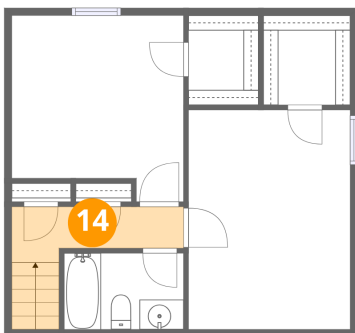
13 Floor 2 - Bath



Dimensions: 8'0" x 5'1"
Area: 41 sq. ft
Counted as living area: Yes

Heated: Yes
Finished: Yes
Enclosed: Yes
Contiguous: Yes
Permitted: Yes
Wet space: Yes
Addition: No
Conversion: No

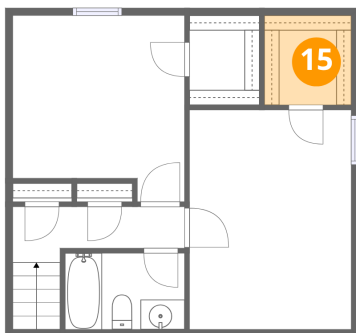
14 Floor 2 - Hall



Dimensions: 11'6" x 3'9"
Area: 49 sq. ft
Counted as living area: Yes

Heated: Yes
Finished: Yes
Enclosed: Yes
Contiguous: Yes
Permitted: Yes
Wet space: No
Addition: No
Conversion: No

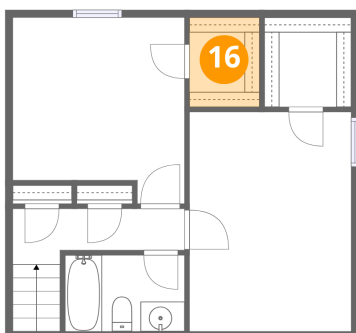
15 Floor 2 - W.I.C.



Dimensions: 5'10" x 6'0"
Area: 35 sq. ft
Counted as living area: Yes

Heated: Yes
Finished: Yes
Enclosed: Yes
Contiguous: Yes
Permitted: Yes
Wet space: No
Addition: No
Conversion: No

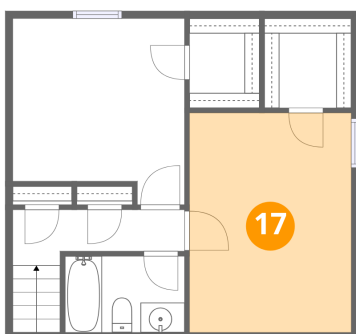
16 Floor 2 - W.I.C.



Dimensions: 4'8" x 6'0"
Area: 28 sq. ft
Counted as living area: Yes

Heated: Yes
Finished: Yes
Enclosed: Yes
Contiguous: Yes
Permitted: Yes
Wet space: No
Addition: No
Conversion: No

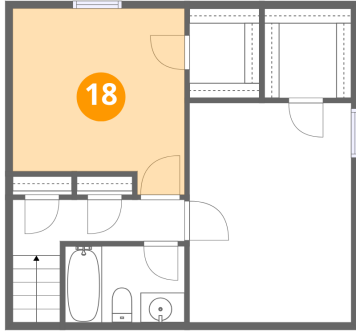
17 Floor 2 - Bedroom



Dimensions: 10'10" x 14'9"
Area: 160 sq. ft
Counted as living area: Yes

Heated: Yes
Finished: Yes
Enclosed: Yes
Contiguous: Yes
Permitted: Yes
Wet space: No
Addition: No
Conversion: No

18 Floor 2 - Bedroom



Dimensions: 11'6" x 12'6"
Area: 131 sq. ft
Counted as living area: Yes

Heated: Yes
Finished: Yes
Enclosed: Yes
Contiguous: Yes
Permitted: Yes
Wet space: No
Addition: No
Conversion: No