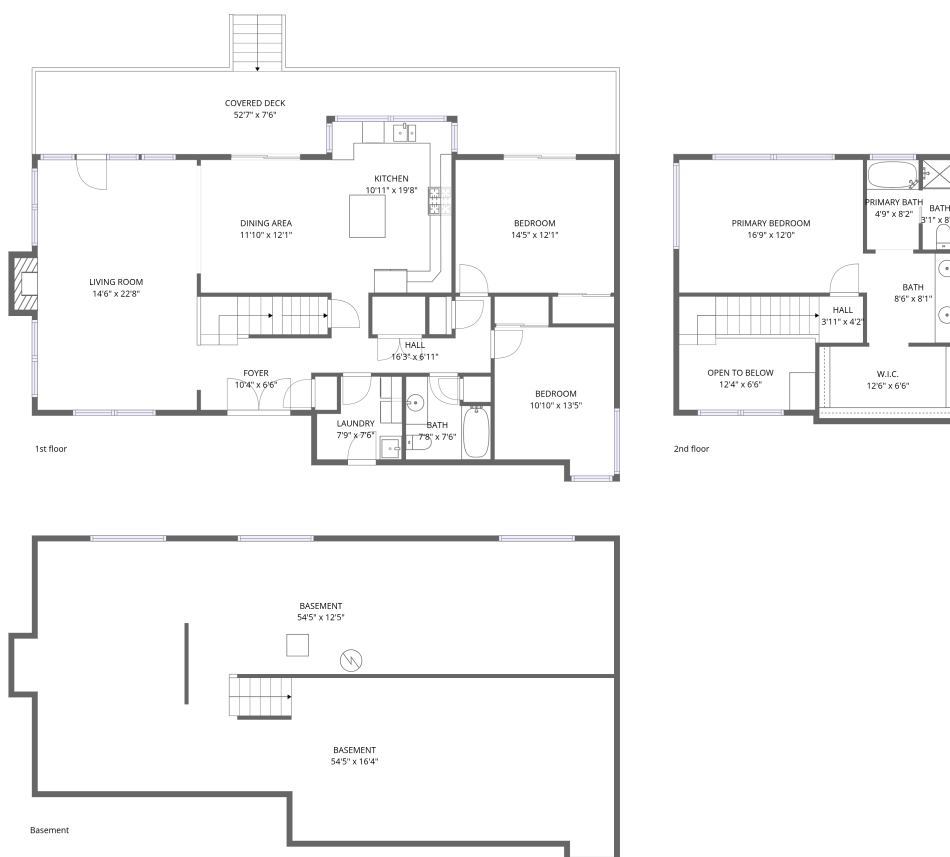


# 3434 M 63, BENTON HARBOR, MI, US



**Total Area: 1857 sq. ft**

Basement: 0 sq. ft, 1st Floor: 1354 sq. ft, 2nd Floor: 503 sq. ft

Excluded: Basement 1334 sq. ft, Covered deck 378 sq. ft, Fireplace 12 sq. ft, Open to below 79 sq. ft, Walls: 216 sq. ft

## Property summary

 **3** Floors

 **3** Bedrooms

 **2** Bathrooms



## Room dimensions

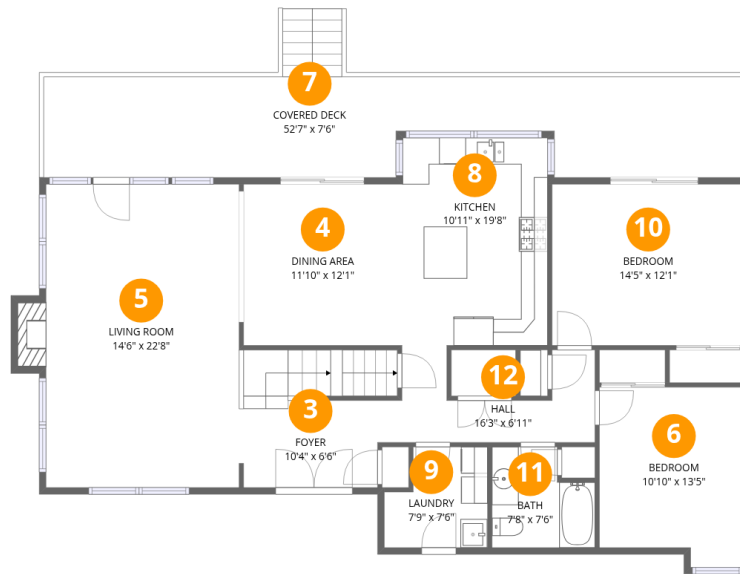
Floor 1 Below grade

Total:0sqft

Excluded: 1334sqft

#		Dimensions	sqft	Counted as living area
1	Basement	54'5" x 16'4"	678 sq. ft	No
2	Basement	54'5" x 12'5"	645 sq. ft	No

# 3434 M 63, BENTON HARBOR, MI, US



## Room dimensions

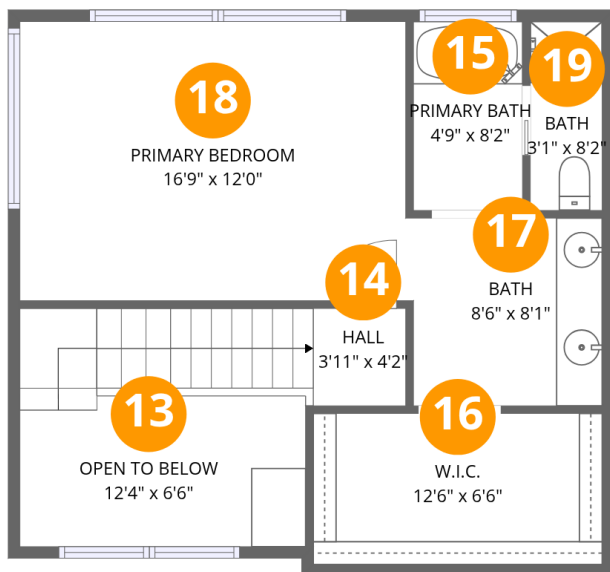
Floor 2

Total: 1354 sqft

Excluded: 390 sqft

#		Dimensions	sqft	Counted as living area
3	Foyer	10'4" x 6'6"	109 sq. ft	Yes
4	Dining Area	11'10" x 12'1"	143 sq. ft	Yes
5	Living Room	14'6" x 22'8"	338 sq. ft	Yes
6	Bedroom	10'10" x 13'5"	136 sq. ft	Yes
7	Covered Deck	52'7" x 7'6"	378 sq. ft	No
8	Kitchen	10'11" x 19'8"	183 sq. ft	Yes
9	Laundry	7'9" x 7'6"	51 sq. ft	Yes
10	Bedroom	14'5" x 12'1"	174 sq. ft	Yes
11	Bath	7'8" x 7'6"	51 sq. ft	Yes
12	Hall	16'3" x 6'11"	63 sq. ft	Yes

# 3434 M 63, BENTON HARBOR, MI, US



## Room dimensions

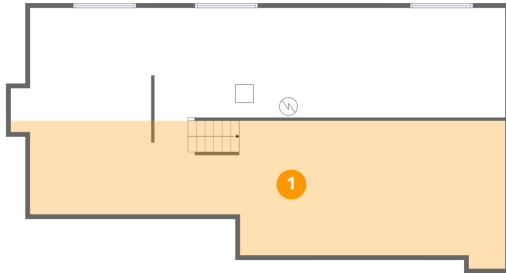
Floor 3

Total: 503sqft Excluded: 79sqft

#		Dimensions	sqft	Counted as living area
13	Open To Below	12'4" x 6'6"	79 sq. ft	No
14	Hall	3'11" x 4'2"	67 sq. ft	Yes
15	Primary Bath	4'9" x 8'2"	39 sq. ft	Yes
16	W.I.C.	12'6" x 6'6"	82 sq. ft	Yes
17	Bath	8'6" x 8'1"	67 sq. ft	Yes
18	Primary Bedroom	16'9" x 12'0"	201 sq. ft	Yes
19	Bath	3'1" x 8'2"	25 sq. ft	Yes

### 1 Floor 1 - Basement

---

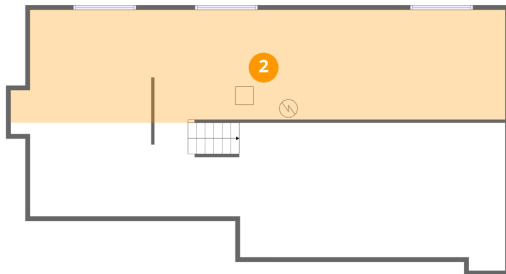


Dimensions: 54'5" x 16'4"  
Area: 678 sq. ft  
Counted as living area: No

Heated: Yes  
Finished: No  
Enclosed: Yes  
Contiguous: Yes  
Permitted: Yes  
Wet space: No  
Addition: No  
Conversion: No

### 2 Floor 1 - Basement

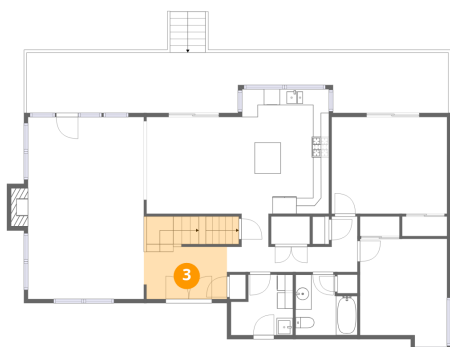
---



Dimensions: 54'5" x 12'5"  
Area: 645 sq. ft  
Counted as living area: No

Heated: Yes  
Finished: No  
Enclosed: Yes  
Contiguous: Yes  
Permitted: Yes  
Wet space: No  
Addition: No  
Conversion: No

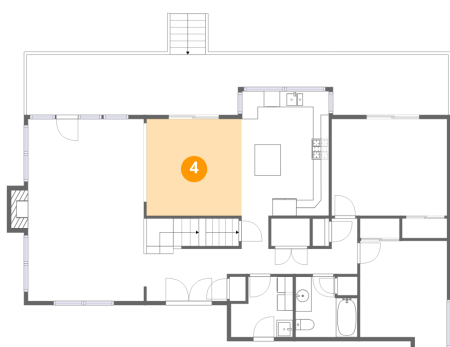
### 3 Floor 2 - Foyer



Dimensions: 10'4" x 6'6"  
Area: 109 sq. ft  
Counted as living area: Yes

Heated: Yes  
Finished: Yes  
Enclosed: Yes  
Contiguous: Yes  
Permitted: Yes  
Wet space: No  
Addition: No  
Conversion: No

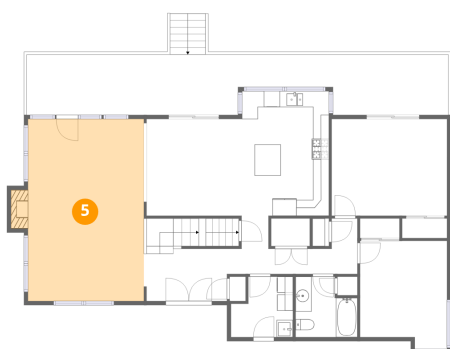
### 4 Floor 2 - Dining Area



Dimensions: 11'10" x 12'1"  
Area: 143 sq. ft  
Counted as living area: Yes

Heated: Yes  
Finished: Yes  
Enclosed: Yes  
Contiguous: Yes  
Permitted: Yes  
Wet space: No  
Addition: No  
Conversion: No

### 5 Floor 2 - Living Room



Dimensions: 14'6" x 22'8"  
Area: 338 sq. ft  
Counted as living area: Yes

Heated: Yes  
Finished: Yes  
Enclosed: Yes  
Contiguous: Yes  
Permitted: Yes  
Wet space: No  
Addition: No  
Conversion: No

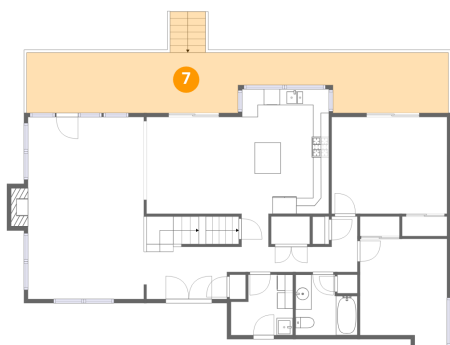
### 6 Floor 2 - Bedroom



Dimensions: 10'10" x 13'5"  
Area: 136 sq. ft  
Counted as living area: Yes

Heated: Yes  
Finished: Yes  
Enclosed: Yes  
Contiguous: Yes  
Permitted: Yes  
Wet space: No  
Addition: No  
Conversion: No

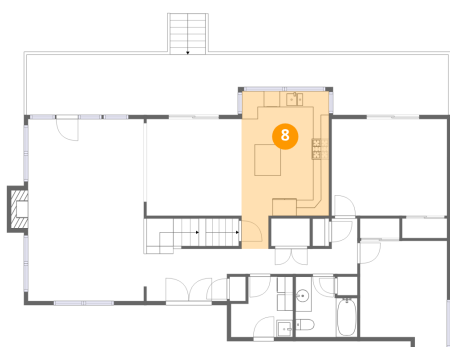
### 7 Floor 2 - Covered Deck



Dimensions: 52'7" x 7'6"  
Area: 378 sq. ft  
Counted as living area: No

Heated: No  
Finished: No  
Enclosed: No  
Contiguous: Yes  
Permitted: Yes  
Wet space: No  
Addition: No  
Conversion: No

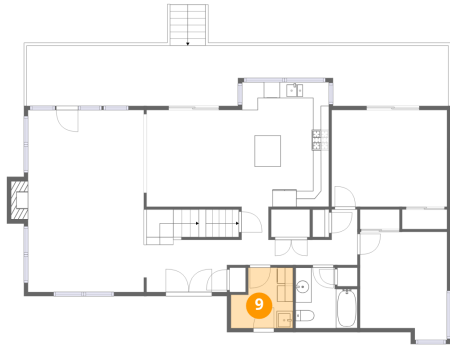
### 8 Floor 2 - Kitchen



Dimensions: 10'11" x 19'8"  
Area: 183 sq. ft  
Counted as living area: Yes

Heated: Yes  
Finished: Yes  
Enclosed: Yes  
Contiguous: Yes  
Permitted: Yes  
Wet space: No  
Addition: No  
Conversion: No

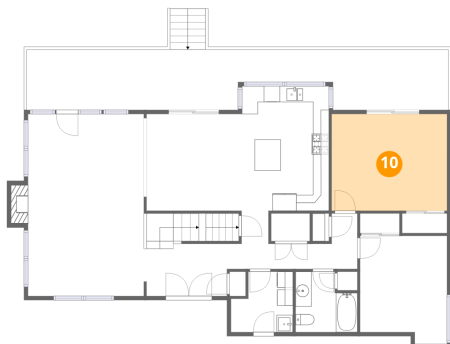
**9** Floor 2 - Laundry



Dimensions: 7'9" x 7'6"  
Area: 51 sq. ft  
Counted as living area: Yes

Heated: Yes  
Finished: Yes  
Enclosed: Yes  
Contiguous: Yes  
Permitted: Yes  
Wet space: No  
Addition: No  
Conversion: No

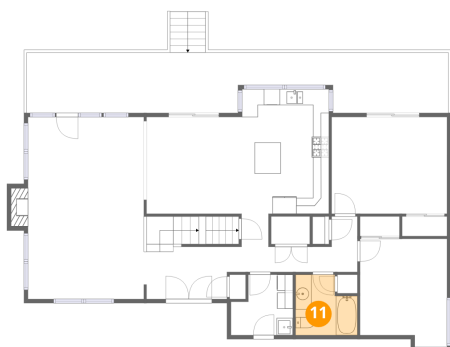
**10** Floor 2 - Bedroom



Dimensions: 14'5" x 12'1"  
Area: 174 sq. ft  
Counted as living area: Yes

Heated: Yes  
Finished: Yes  
Enclosed: Yes  
Contiguous: Yes  
Permitted: Yes  
Wet space: No  
Addition: No  
Conversion: No

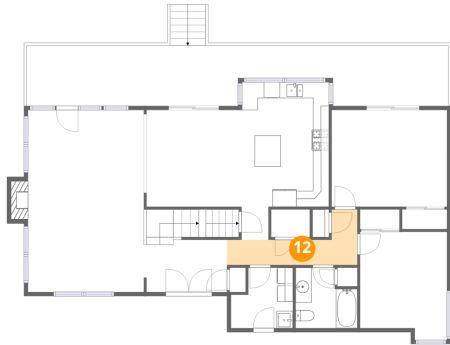
**11** Floor 2 - Bath



Dimensions: 7'8" x 7'6"  
Area: 51 sq. ft  
Counted as living area: Yes

Heated: Yes  
Finished: Yes  
Enclosed: Yes  
Contiguous: Yes  
Permitted: Yes  
Wet space: Yes  
Addition: No  
Conversion: No

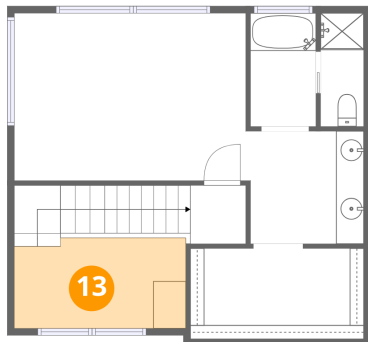
**12** Floor 2 - Hall



Dimensions: 16'3" x 6'11"  
Area: 63 sq. ft  
Counted as living area: Yes

Heated: Yes  
Finished: Yes  
Enclosed: Yes  
Contiguous: Yes  
Permitted: Yes  
Wet space: No  
Addition: No  
Conversion: No

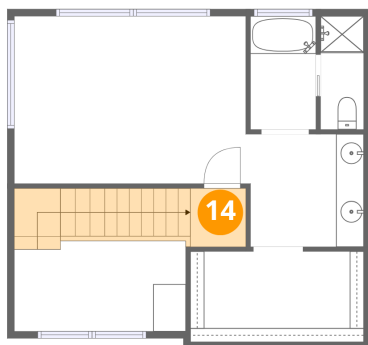
**13** Floor 3 - Open To Below



Dimensions: 12'4" x 6'6"  
Area: 79 sq. ft  
Counted as living area: No

Heated: No  
Finished: No  
Enclosed: No  
Contiguous: Yes  
Permitted: No  
Wet space: No  
Addition: No  
Conversion: No

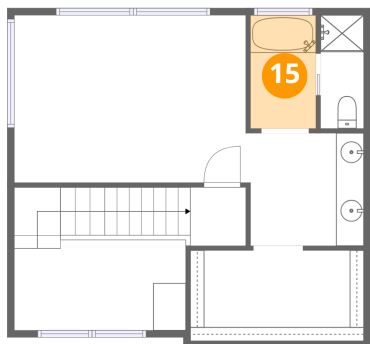
**14** Floor 3 - Hall



Dimensions: 3'11" x 4'2"  
Area: 67 sq. ft  
Counted as living area: Yes

Heated: Yes  
Finished: Yes  
Enclosed: Yes  
Contiguous: Yes  
Permitted: Yes  
Wet space: No  
Addition: No  
Conversion: No

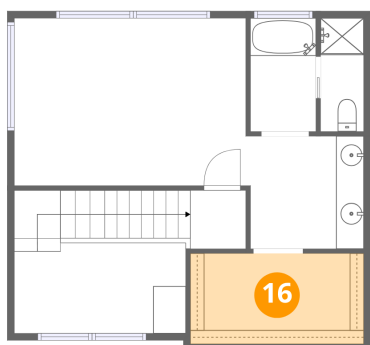
**15** Floor 3 - Primary Bath



Dimensions: 4'9" x 8'2"  
Area: 39 sq. ft  
Counted as living area: Yes

Heated: Yes  
Finished: Yes  
Enclosed: Yes  
Contiguous: Yes  
Permitted: Yes  
Wet space: Yes  
Addition: No  
Conversion: No

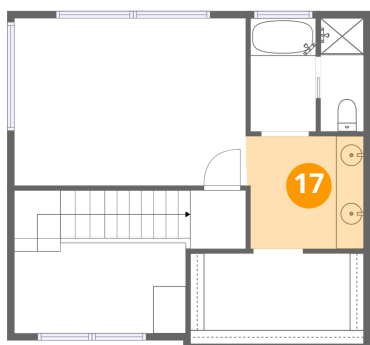
**16** Floor 3 - W.I.C.



Dimensions: 12'6" x 6'6"  
Area: 82 sq. ft  
Counted as living area: Yes

Heated: Yes  
Finished: Yes  
Enclosed: Yes  
Contiguous: Yes  
Permitted: Yes  
Wet space: No  
Addition: No  
Conversion: No

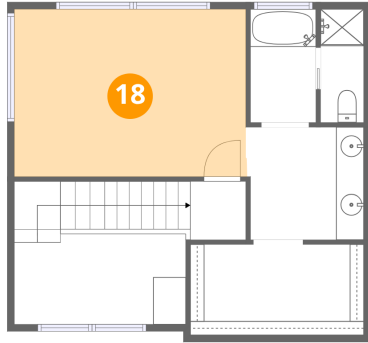
**17** Floor 3 - Bath



Dimensions: 8'6" x 8'1"  
Area: 67 sq. ft  
Counted as living area: Yes

Heated: Yes  
Finished: Yes  
Enclosed: Yes  
Contiguous: Yes  
Permitted: Yes  
Wet space: Yes  
Addition: No  
Conversion: No

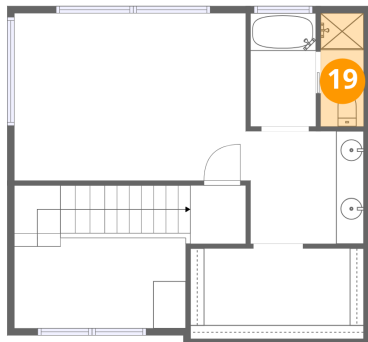
**18** Floor 3 - Primary Bedroom



Dimensions: 16'9" x 12'0"  
Area: 201 sq. ft  
Counted as living area: Yes

Heated: Yes  
Finished: Yes  
Enclosed: Yes  
Contiguous: Yes  
Permitted: Yes  
Wet space: No  
Addition: No  
Conversion: No

**19** Floor 3 - Bath



Dimensions: 3'1" x 8'2"  
Area: 25 sq. ft  
Counted as living area: Yes

Heated: Yes  
Finished: Yes  
Enclosed: Yes  
Contiguous: Yes  
Permitted: Yes  
Wet space: Yes  
Addition: No  
Conversion: No