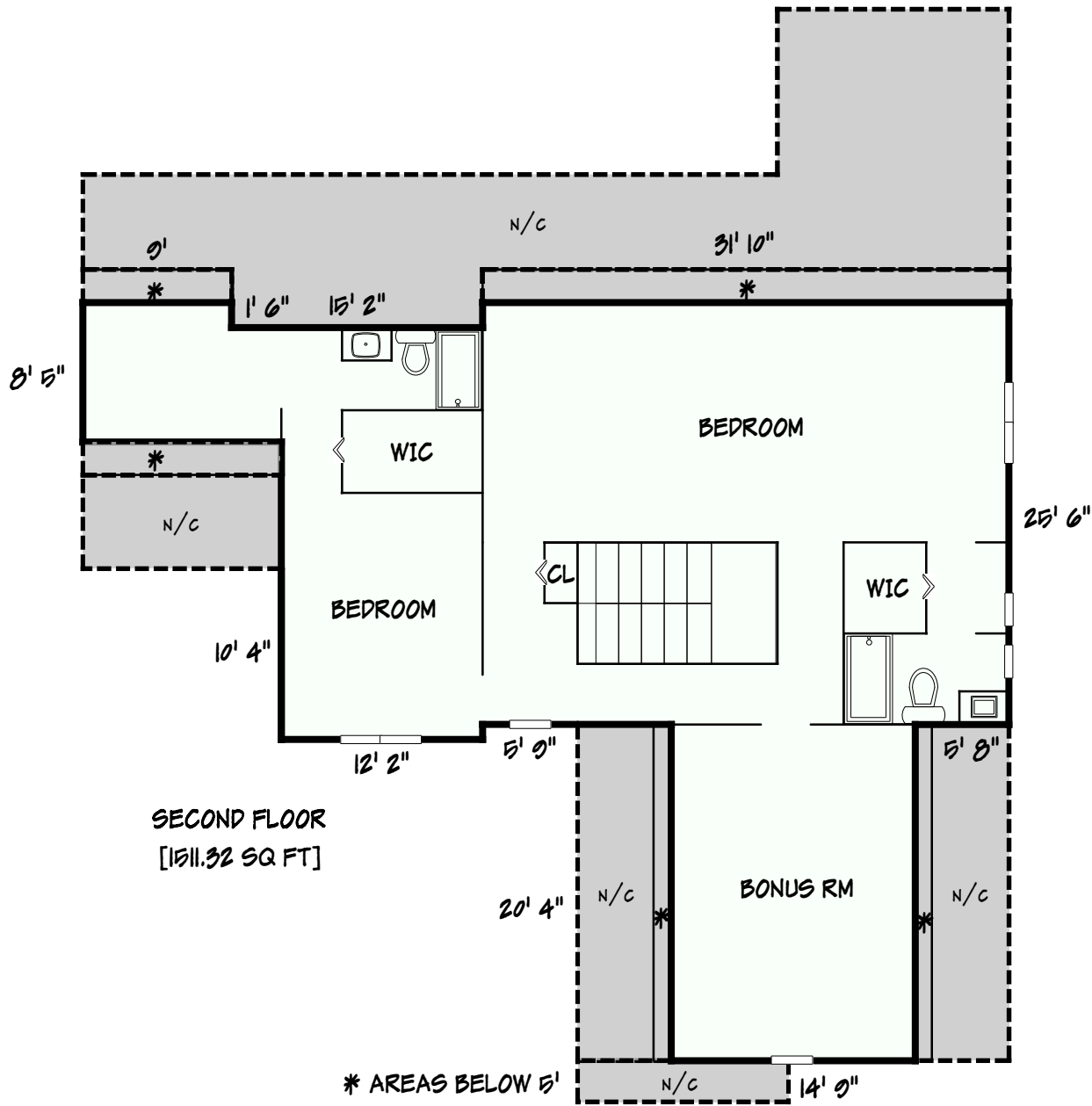
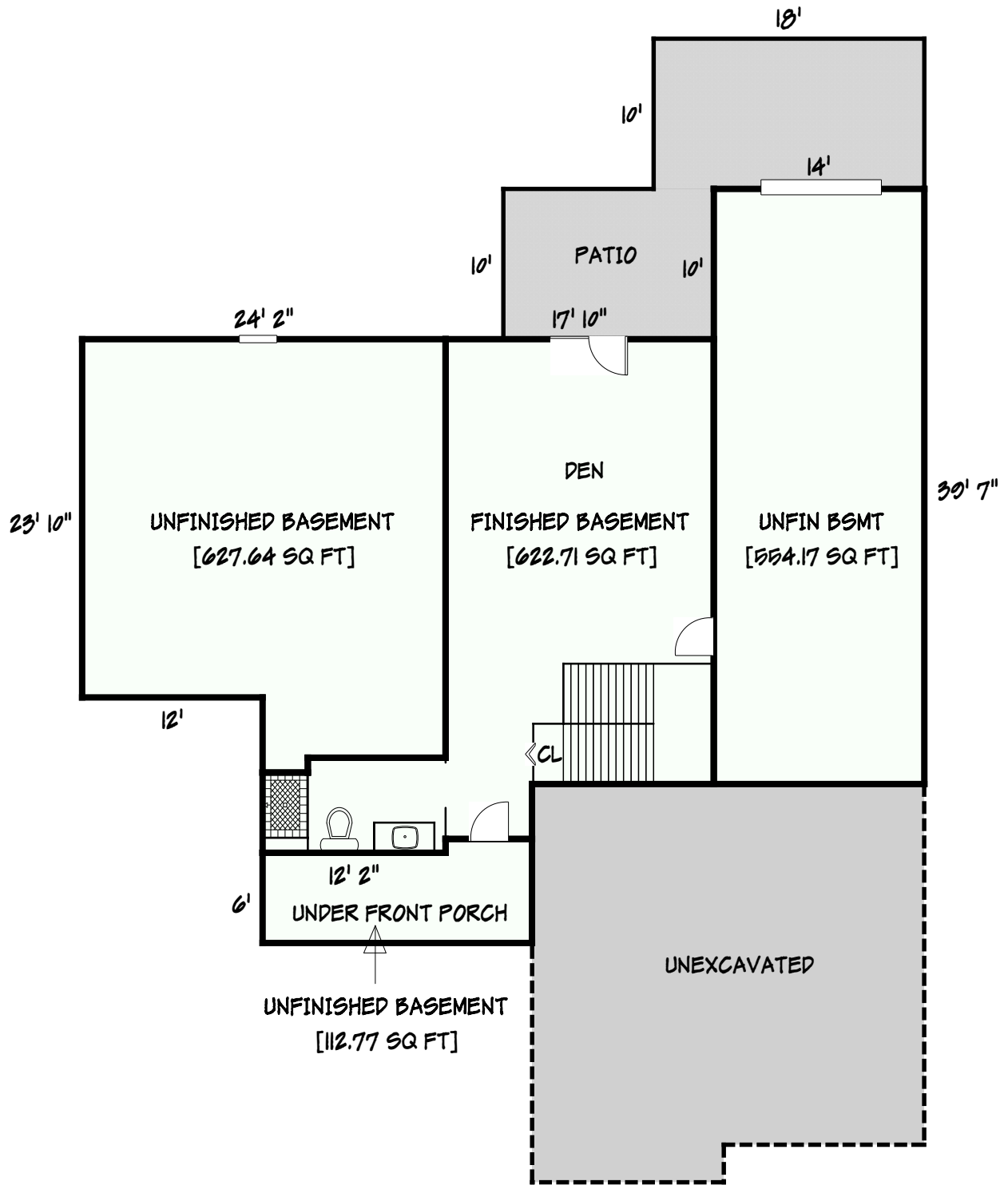


FIRST FLOOR
[1804.51 SQ FT]



* AREAS BELOW 5'



Area Calculations Summary

Living Area		Calculation Details	
First Floor	1804.51 Sq ft	$14 \times 10 = 140$ $29.58 \times 26.08 = 771.63$ $29.92 \times 23.83 = 713.01$ $10.33 \times 12.17 = 125.72$ $9.42 \times 5.75 = 54.15$	
Second Floor	1511.32 Sq ft	$14.75 \times 20.33 = 299.92$ $8.42 \times 9 = 75.75$ $25.5 \times 31.83 = 811.75$ $6.92 \times 3 = 20.75$ $24.92 \times 12.17 = 303.15$	
Total Living Area (Rounded):	3316 Sq ft		
Non-living Area			
Garage	657.87 Sq ft	$26.08 \times 24 = 626$ $12.75 \times 2.5 = 31.88$	
Porch	112.77 Sq ft	$6.92 \times 5.75 = 39.77$ $12.17 \times 6 = 73$	
Screened Porch	200 Sq ft	$10 \times 20 = 200$	
Deck	140 Sq ft	$10 \times 14 = 140$	
Unfinished Basement	112.77 Sq ft	$6.92 \times 5.75 = 39.77$ $12.17 \times 6 = 73$	
Unfinished Basement	627.64 Sq ft	$24.17 \times 23.83 = 575.97$ $5 \times 3 = 15$ $9.17 \times 4 = 36.66$	
Patio	320 Sq ft	$18 \times 10 = 180$ $14 \times 10 = 140$	
Unfin Bsmt	554.17 Sq ft	$14 \times 39.58 = 554.17$	
Finished Basement	622.71 Sq ft	$5.33 \times 3 = 16$ $6.33 \times 9.17 = 58.05$ $33.25 \times 5.75 = 191.19$ $29.58 \times 12.08 = 357.46$	