

Home data report

8301 Red Stone Hill Rd, Louisville, KY, US



Total Area: 2590 sq. ft

Basement: 996 sq. ft, 1st Floor: 1655 sq. ft, 2nd Floor: 935 sq. ft

Excluded: Storage 217 sq. ft, Utility 49 sq. ft, Undefined 12 sq. ft, Garage 506 sq. ft, Attic 179 sq. ft, Open to below 68 sq. ft

Property summary

 **3** Floors

 **5** Bedrooms

 **3** Bathrooms

Home data report

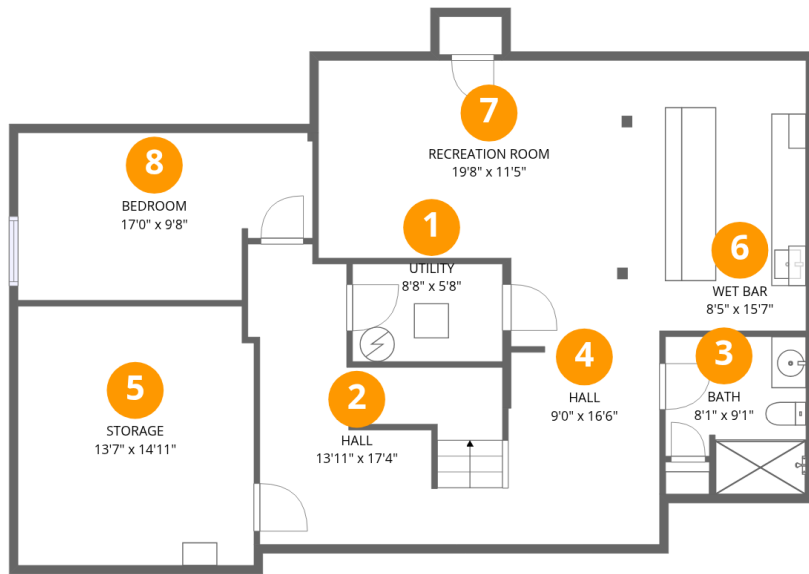
8301 Red Stone Hill Rd,Louisville,KY,US



1
Half baths



1
Garages



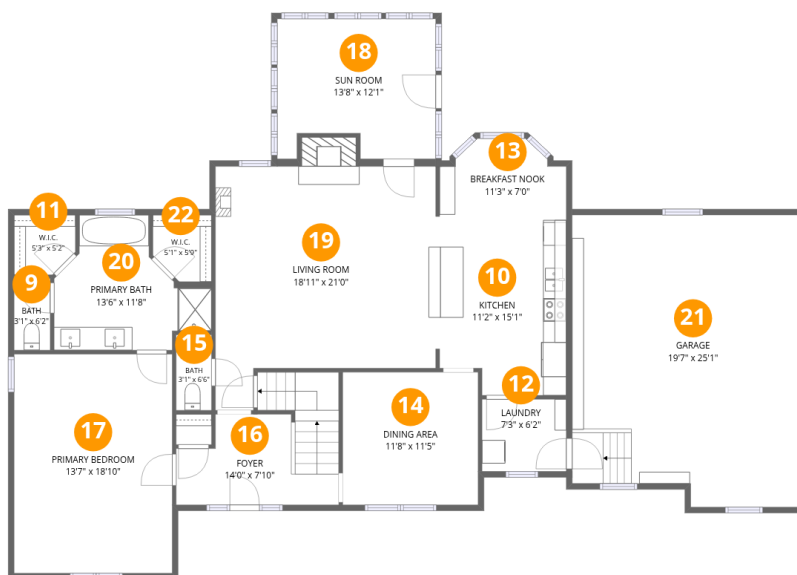
Room dimensions

Floor 1 Below grade

Total:996sqft

Excluded: 278sqft

#		Dimensions	sqft	Counted as living area
1	Utility	8'8" x 5'8"	49 sq. ft	No
2	Hall	13'11" x 17'4"	180 sq. ft	Yes
3	Bath	8'1" x 9'1"	67 sq. ft	Yes
4	Hall	9'0" x 16'6"	144 sq. ft	Yes
5	Storage	13'7" x 14'11"	202 sq. ft	No
6	Wet Bar	8'5" x 15'7"	131 sq. ft	Yes
7	Recreation Room	19'8" x 11'5"	224 sq. ft	Yes
8	Bedroom	17'0" x 9'8"	149 sq. ft	Yes



Room dimensions

Floor 2

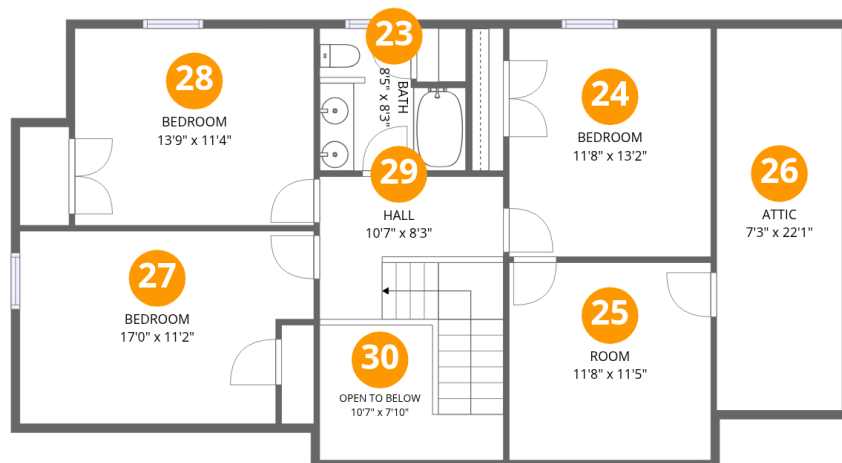
Total:1655sqft Excluded: 506sqft

#		Dimensions	sqft	Counted as living area
9	Bath	3'1" x 6'2"	19 sq. ft	Yes
10	Kitchen	11'2" x 15'1"	159 sq. ft	Yes
11	W.I.C.	5'3" x 5'2"	25 sq. ft	Yes
12	Laundry	7'3" x 6'2"	45 sq. ft	Yes
13	Breakfast Nook	11'3" x 7'0"	66 sq. ft	Yes
14	Dining Area	11'8" x 11'5"	133 sq. ft	Yes
15	Bath	3'1" x 6'6"	20 sq. ft	Yes
16	Foyer	14'0" x 7'10"	123 sq. ft	Yes
17	Primary Bedroom	13'7" x 18'10"	256 sq. ft	Yes
18	Sun Room	13'8" x 12'1"	152 sq. ft	Yes
19	Living Room	18'11" x 21'0"	353 sq. ft	Yes

Home data report

8301 Red Stone Hill Rd,Louisville,KY,US

#		Dimensions	sqft	Counted as living area
20	Primary Bath	13'6" x 11'8"	113 sq. ft	Yes
21	Garage	19'7" x 25'1"	472 sq. ft	No
22	W.I.C.	5'1" x 5'9"	26 sq. ft	Yes



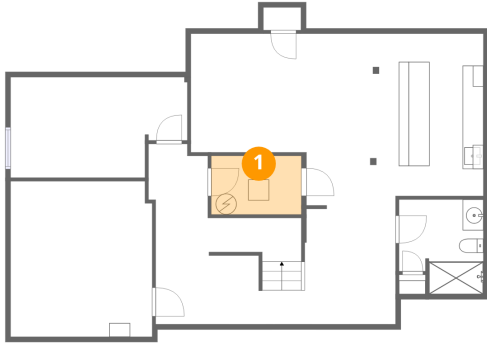
Room dimensions

Floor 3

Total:935sqft Excluded: 247sqft

#		Dimensions	sqft	Counted as living area
23	Bath	8'5" x 8'3"	59 sq. ft	Yes
24	Bedroom	11'8" x 13'2"	154 sq. ft	Yes
25	Room	11'8" x 11'5"	133 sq. ft	Yes
26	Attic	7'3" x 22'1"	160 sq. ft	No
27	Bedroom	17'0" x 11'2"	176 sq. ft	Yes
28	Bedroom	13'9" x 11'4"	157 sq. ft	Yes
29	Hall	10'7" x 8'3"	112 sq. ft	Yes
30	Open To Below	10'7" x 7'10"	62 sq. ft	No

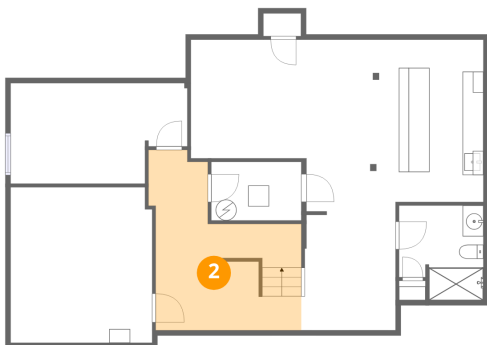
1 Floor 1 - Utility



Dimensions: 8'8" x 5'8"
Area: 49 sq. ft
Counted as living area: No

Heated: Yes
Finished: No
Enclosed: Yes
Contiguous: Yes
Permitted: Yes
Wet space: No
Addition: No
Conversion: No

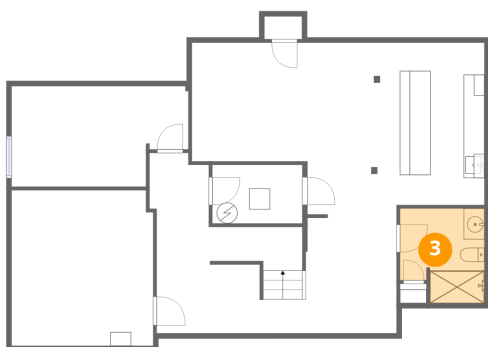
2 Floor 1 - Hall



Dimensions: 13'11" x 17'4"
Area: 180 sq. ft
Counted as living area: Yes

Heated: Yes
Finished: Yes
Enclosed: Yes
Contiguous: Yes
Permitted: Yes
Wet space: No
Addition: No
Conversion: No

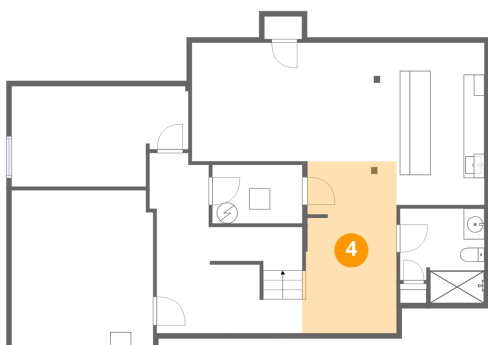
3 Floor 1 - Bath



Dimensions: 8'1" x 9'1"
Area: 67 sq. ft
Counted as living area: Yes

Heated: Yes
Finished: Yes
Enclosed: Yes
Contiguous: Yes
Permitted: Yes
Wet space: Yes
Addition: No
Conversion: No

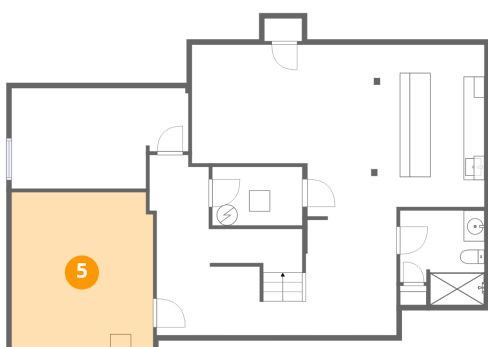
4 Floor 1 - Hall



Dimensions: 9'0" x 16'6"
Area: 144 sq. ft
Counted as living area: Yes

Heated: Yes
Finished: Yes
Enclosed: Yes
Contiguous: Yes
Permitted: Yes
Wet space: No
Addition: No
Conversion: No

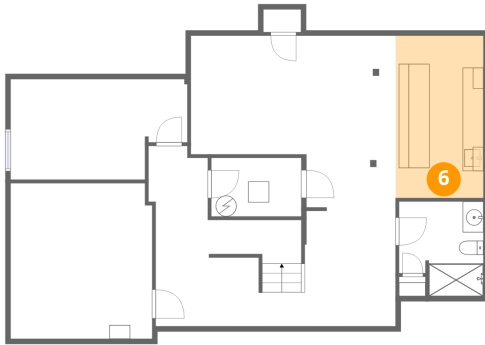
5 Floor 1 - Storage



Dimensions: 13'7" x 14'11"
Area: 202 sq. ft
Counted as living area: No

Heated: No
Finished: No
Enclosed: No
Contiguous: Yes
Permitted: Yes
Wet space: No
Addition: No
Conversion: No

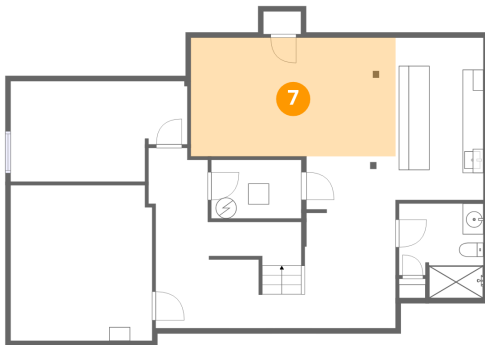
6 Floor 1 - Wet Bar



Dimensions: 8'5" x 15'7"
Area: 131 sq. ft
Counted as living area: Yes

Heated: Yes
Finished: Yes
Enclosed: Yes
Contiguous: Yes
Permitted: Yes
Wet space: No
Addition: No
Conversion: No

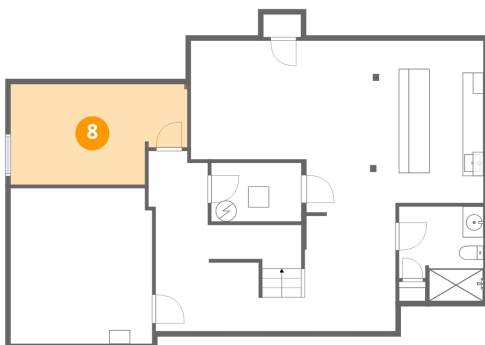
7 Floor 1 - Recreation Room



Dimensions: 19'8" x 11'5"
Area: 224 sq. ft
Counted as living area: Yes

Heated: Yes
Finished: Yes
Enclosed: Yes
Contiguous: Yes
Permitted: Yes
Wet space: No
Addition: No
Conversion: No

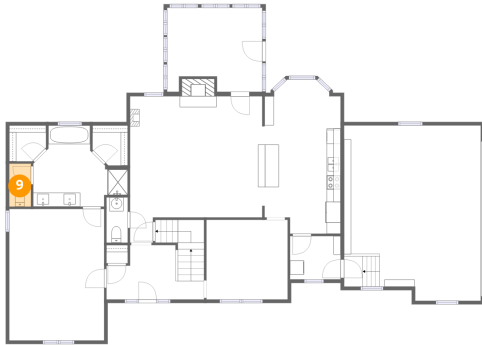
8 Floor 1 - Bedroom



Dimensions: 17'0" x 9'8"
Area: 149 sq. ft
Counted as living area: Yes

Heated: Yes
Finished: Yes
Enclosed: Yes
Contiguous: Yes
Permitted: Yes
Wet space: No
Addition: No
Conversion: No

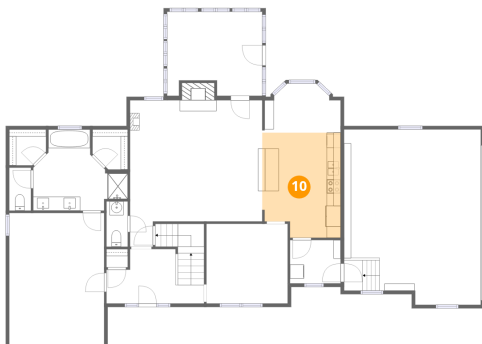
9 Floor 2 - Bath



Dimensions: 3'1" x 6'2"
Area: 19 sq. ft
Counted as living area: Yes

Heated: Yes
Finished: Yes
Enclosed: Yes
Contiguous: Yes
Permitted: Yes
Wet space: Yes
Addition: No
Conversion: No

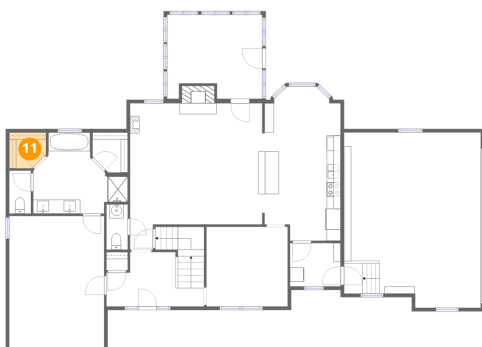
10 Floor 2 - Kitchen



Dimensions: 11'2" x 15'1"
Area: 159 sq. ft
Counted as living area: Yes

Heated: Yes
Finished: Yes
Enclosed: Yes
Contiguous: Yes
Permitted: Yes
Wet space: No
Addition: No
Conversion: No

11 Floor 2 - W.I.C.



Dimensions: 5'3" x 5'2"
Area: 25 sq. ft
Counted as living area: Yes

Heated: Yes
Finished: Yes
Enclosed: Yes
Contiguous: Yes
Permitted: Yes
Wet space: No
Addition: No
Conversion: No

12 Floor 2 - Laundry



Dimensions: 7'3" x 6'2"
Area: 45 sq. ft
Counted as living area: Yes

Heated: Yes
Finished: Yes
Enclosed: Yes
Contiguous: Yes
Permitted: Yes
Wet space: No
Addition: No
Conversion: No

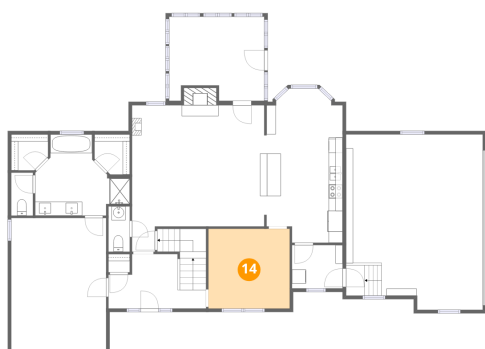
13 Floor 2 - Breakfast Nook



Dimensions: 11'3" x 7'0"
Area: 66 sq. ft
Counted as living area: Yes

Heated: Yes
Finished: Yes
Enclosed: Yes
Contiguous: Yes
Permitted: Yes
Wet space: No
Addition: No
Conversion: No

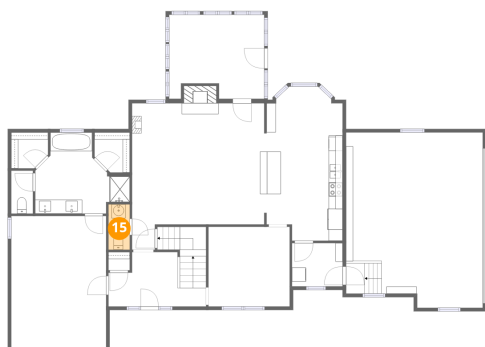
14 Floor 2 - Dining Area



Dimensions: 11'8" x 11'5"
Area: 133 sq. ft
Counted as living area: Yes

Heated: Yes
Finished: Yes
Enclosed: Yes
Contiguous: Yes
Permitted: Yes
Wet space: No
Addition: No
Conversion: No

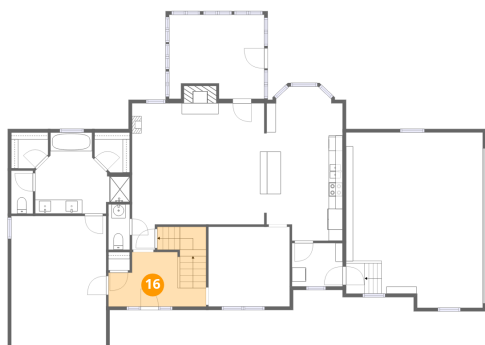
15 Floor 2 - Bath



Dimensions: 3'1" x 6'6"
Area: 20 sq. ft
Counted as living area: Yes

Heated: Yes
Finished: Yes
Enclosed: Yes
Contiguous: Yes
Permitted: Yes
Wet space: Yes
Addition: No
Conversion: No

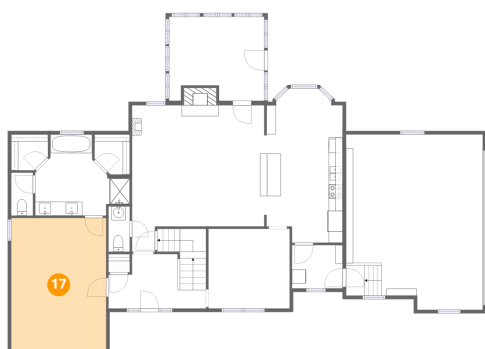
16 Floor 2 - Foyer



Dimensions: 14'0" x 7'10"
Area: 123 sq. ft
Counted as living area: Yes

Heated: Yes
Finished: Yes
Enclosed: Yes
Contiguous: Yes
Permitted: Yes
Wet space: No
Addition: No
Conversion: No

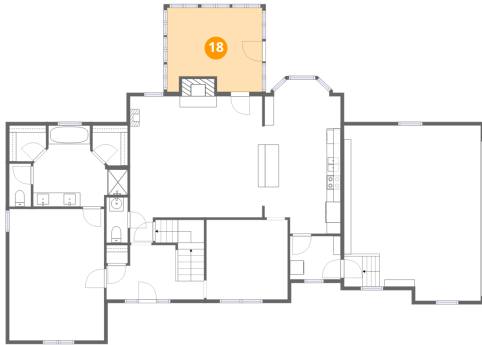
17 Floor 2 - Primary Bedroom



Dimensions: 13'7" x 18'10"
Area: 256 sq. ft
Counted as living area: Yes

Heated: Yes
Finished: Yes
Enclosed: Yes
Contiguous: Yes
Permitted: Yes
Wet space: No
Addition: No
Conversion: No

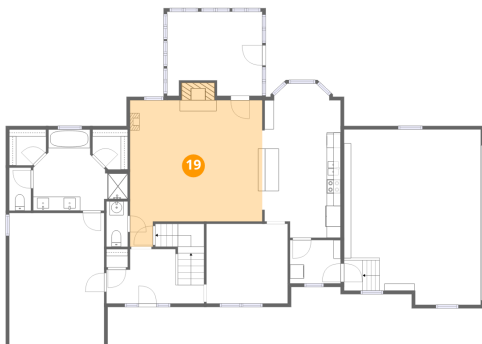
18 Floor 2 - Sun Room



Dimensions: 13'8" x 12'1"
Area: 152 sq. ft
Counted as living area: Yes

Heated: Yes
Finished: Yes
Enclosed: Yes
Contiguous: Yes
Permitted: Yes
Wet space: No
Addition: No
Conversion: No

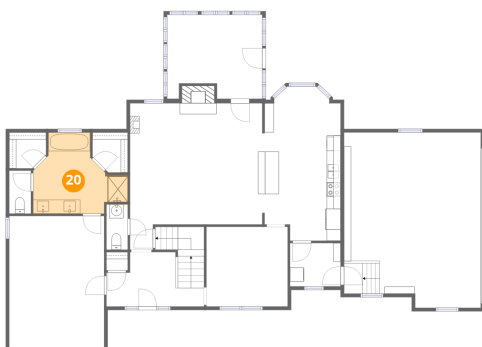
19 Floor 2 - Living Room



Dimensions: 18'11" x 21'0"
Area: 353 sq. ft
Counted as living area: Yes

Heated: Yes
Finished: Yes
Enclosed: Yes
Contiguous: Yes
Permitted: Yes
Wet space: No
Addition: No
Conversion: No

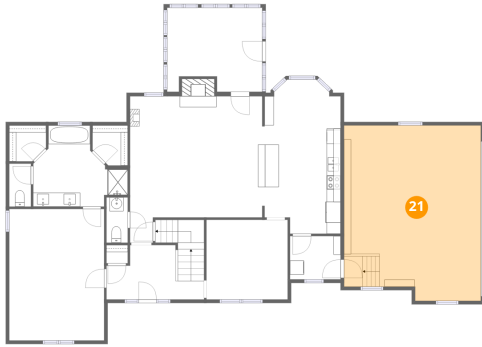
20 Floor 2 - Primary Bath



Dimensions: 13'6" x 11'8"
Area: 113 sq. ft
Counted as living area: Yes

Heated: Yes
Finished: Yes
Enclosed: Yes
Contiguous: Yes
Permitted: Yes
Wet space: Yes
Addition: No
Conversion: No

21 Floor 2 - Garage



Dimensions: 19'7" x 25'1"
Area: 472 sq. ft
Counted as living area: No

Heated: No
Finished: No
Enclosed: Yes
Contiguous: Yes
Permitted: Yes
Wet space: No
Addition: No
Conversion: No

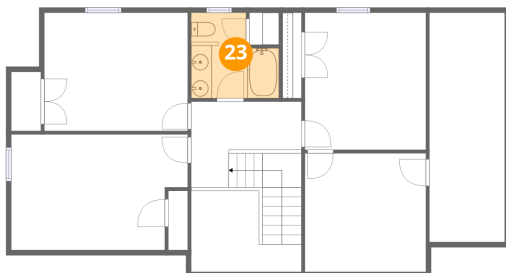
22 Floor 2 - W.I.C.



Dimensions: 5'1" x 5'9"
Area: 26 sq. ft
Counted as living area: Yes

Heated: Yes
Finished: Yes
Enclosed: Yes
Contiguous: Yes
Permitted: Yes
Wet space: No
Addition: No
Conversion: No

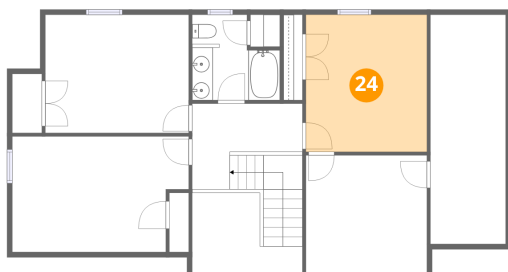
23 Floor 3 - Bath



Dimensions: 8'5" x 8'3"
Area: 59 sq. ft
Counted as living area: Yes

Heated: Yes
Finished: Yes
Enclosed: Yes
Contiguous: Yes
Permitted: Yes
Wet space: Yes
Addition: No
Conversion: No

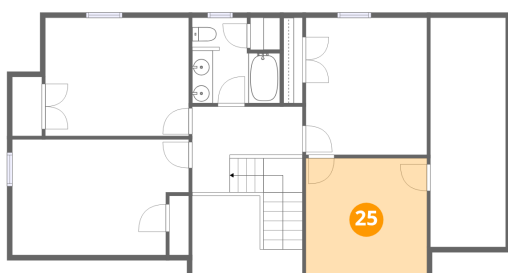
24 Floor 3 - Bedroom



Dimensions: 11'8" x 13'2"
Area: 154 sq. ft
Counted as living area: Yes

Heated: Yes
Finished: Yes
Enclosed: Yes
Contiguous: Yes
Permitted: Yes
Wet space: No
Addition: No
Conversion: No

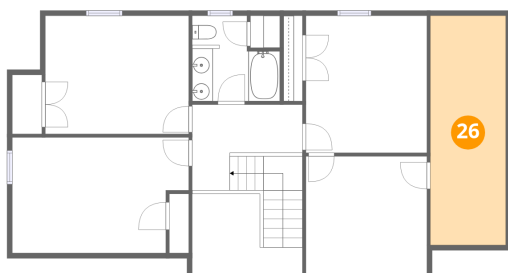
25 Floor 3 - Room



Dimensions: 11'8" x 11'5"
Area: 133 sq. ft
Counted as living area: Yes

Heated: Yes
Finished: Yes
Enclosed: Yes
Contiguous: Yes
Permitted: Yes
Wet space: No
Addition: No
Conversion: No

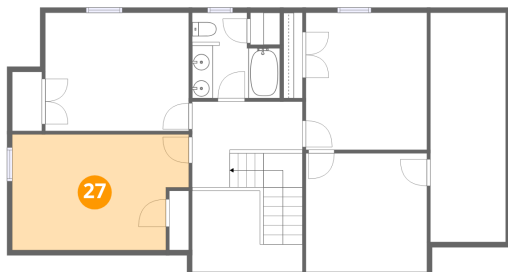
26 Floor 3 - Attic



Dimensions: 7'3" x 22'1"
Area: 160 sq. ft
Counted as living area: No

Heated: No
Finished: No
Enclosed: Yes
Contiguous: Yes
Permitted: Yes
Wet space: No
Addition: No
Conversion: No

27 Floor 3 - Bedroom



Dimensions: 17'0" x 11'2"
Area: 176 sq. ft
Counted as living area: Yes

Heated: Yes
Finished: Yes
Enclosed: Yes
Contiguous: Yes
Permitted: Yes
Wet space: No
Addition: No
Conversion: No

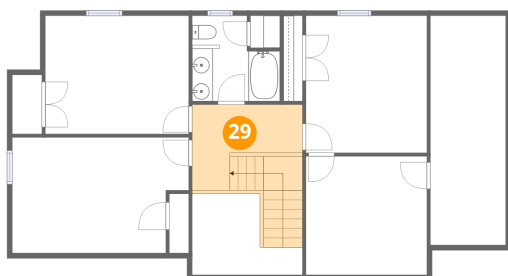
28 Floor 3 - Bedroom



Dimensions: 13'9" x 11'4"
Area: 157 sq. ft
Counted as living area: Yes

Heated: Yes
Finished: Yes
Enclosed: Yes
Contiguous: Yes
Permitted: Yes
Wet space: No
Addition: No
Conversion: No

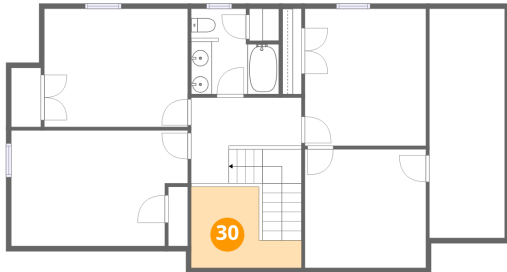
29 Floor 3 - Hall



Dimensions: 10'7" x 8'3"
Area: 112 sq. ft
Counted as living area: Yes

Heated: Yes
Finished: Yes
Enclosed: Yes
Contiguous: Yes
Permitted: Yes
Wet space: No
Addition: No
Conversion: No

30 Floor 3 - Open To Below



Dimensions: 10'7" x 7'10"
Area: 62 sq. ft
Counted as living area: No

Heated: No
Finished: No
Enclosed: No
Contiguous: Yes
Permitted: No
Wet space: No
Addition: No
Conversion: No