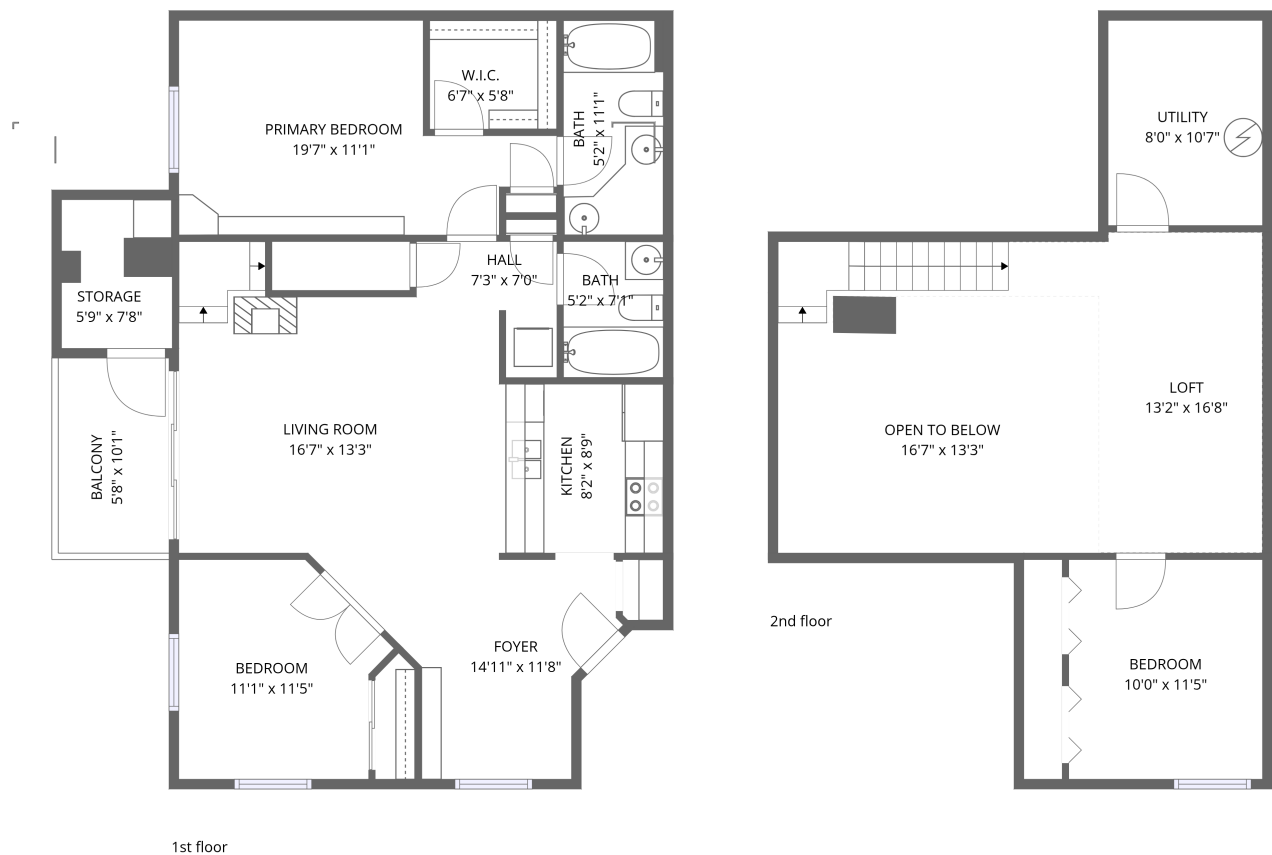


Home data report

3600 South Pierce Street, Academy Park, Denver, Jefferson County, Colorado, United States, 80235, #4-207



Total Area: 1376 sq. ft

1st Floor: 1006 sq. ft, 2nd Floor: 370 sq. ft

Excluded: Storage 52 sq. ft, Balcony 58 sq. ft, Utility 97 sq. ft, Open to below 229 sq. ft

Property summary

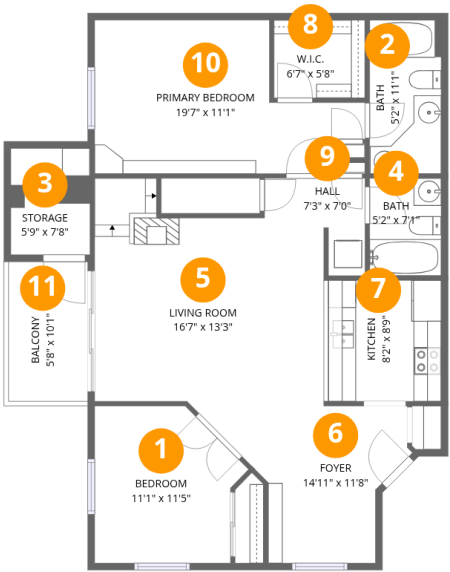
 **2** Floors

 **3** Bedrooms

 **2** Bathrooms

Home data report

3600 South Pierce Street, Academy Park, Denver, Jefferson County, Colorado, United States, 80235, #4-207

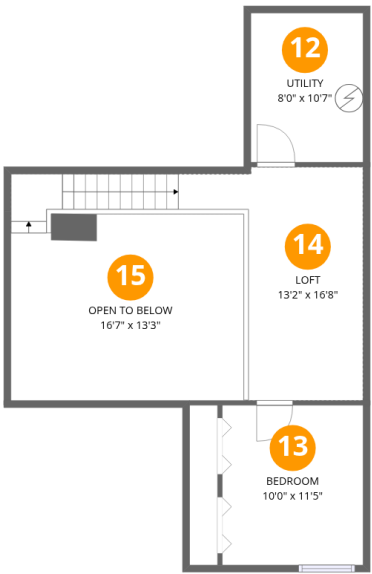


Room dimensions

Floor 1 Total:1006sqft Excluded: 110sqft

#		Dimensions	sqft	Counted as living area
1	Bedroom	11'1" x 11'5"	108 sq. ft	Yes
2	Bath	5'2" x 11'1"	58 sq. ft	Yes
3	Storage	5'9" x 7'8"	44 sq. ft	No
4	Bath	5'2" x 7'1"	36 sq. ft	Yes
5	Living Room	16'7" x 13'3"	232 sq. ft	Yes
6	Foyer	14'11" x 11'8"	118 sq. ft	Yes
7	Kitchen	8'2" x 8'9"	74 sq. ft	Yes
8	W.I.C.	6'7" x 5'8"	37 sq. ft	Yes
9	Hall	7'3" x 7'0"	34 sq. ft	Yes
10	Primary Bedroom	19'7" x 11'1"	169 sq. ft	Yes
11	Balcony	5'8" x 10'1"	58 sq. ft	No

3600 South Pierce Street, Academy Park, Denver, Jefferson County, Colorado, United States, 80235, #4-207



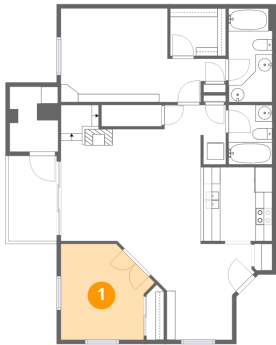
Room dimensions

Floor 2 Total:370sqft Excluded: 326sqft

#		Dimensions	sqft	Counted as living area
12	Utility	8'0" x 10'7"	85 sq. ft	No
13	Bedroom	10'0" x 11'5"	114 sq. ft	Yes
14	Loft	13'2" x 16'8"	192 sq. ft	Yes
15	Open To Below	16'7" x 13'3"	216 sq. ft	No

3600 South Pierce Street, Academy Park, Denver, Jefferson County, Colorado, United States, 80235, #4-207

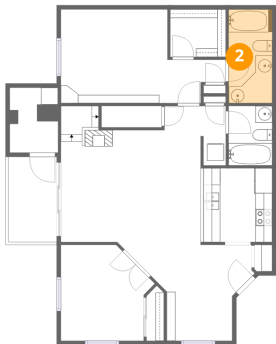
1 Floor 1 - Bedroom



Dimensions: 11'1" x 11'5"
Area: 108 sq. ft
Counted as living area: Yes

Heated: Yes
Finished: Yes
Enclosed: Yes
Contiguous: Yes
Permitted: Yes
Wet space: No
Addition: No
Conversion: No

2 Floor 1 - Bath

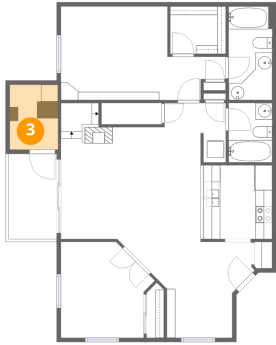


Dimensions: 5'2" x 11'1"
Area: 58 sq. ft
Counted as living area: Yes

Heated: Yes
Finished: Yes
Enclosed: Yes
Contiguous: Yes
Permitted: Yes
Wet space: Yes
Addition: No
Conversion: No

3600 South Pierce Street, Academy Park, Denver, Jefferson
County, Colorado, United States, 80235, #4-207

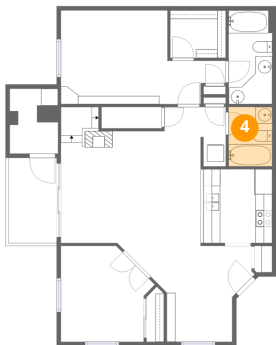
3 Floor 1 - Storage



Dimensions: 5'9" x 7'8"
Area: 44 sq. ft
Counted as living area: No

Heated: No
Finished: No
Enclosed: No
Contiguous: Yes
Permitted: Yes
Wet space: No
Addition: No
Conversion: No

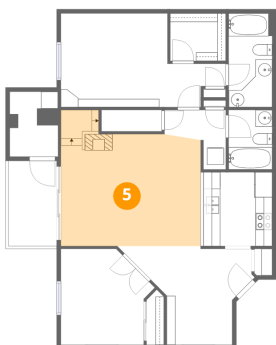
4 Floor 1 - Bath



Dimensions: 5'2" x 7'1"
Area: 36 sq. ft
Counted as living area: Yes

Heated: Yes
Finished: Yes
Enclosed: Yes
Contiguous: Yes
Permitted: Yes
Wet space: Yes
Addition: No
Conversion: No

5 Floor 1 - Living Room

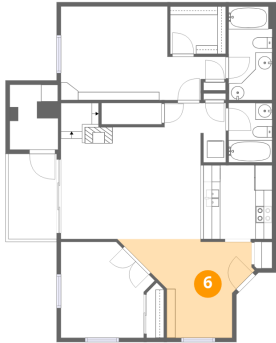


Dimensions: 16'7" x 13'3"
Area: 232 sq. ft
Counted as living area: Yes

Heated: Yes
Finished: Yes
Enclosed: Yes
Contiguous: Yes
Permitted: Yes
Wet space: No
Addition: No
Conversion: No

3600 South Pierce Street, Academy Park, Denver, Jefferson
County, Colorado, United States, 80235, #4-207

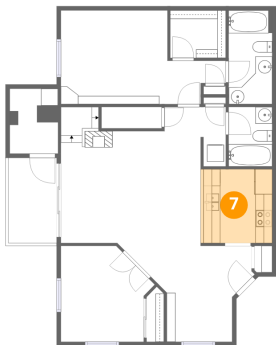
6 Floor 1 - Foyer



Dimensions: 14'11" x 11'8"
Area: 118 sq. ft
Counted as living area: Yes

Heated: Yes
Finished: Yes
Enclosed: Yes
Contiguous: Yes
Permitted: Yes
Wet space: No
Addition: No
Conversion: No

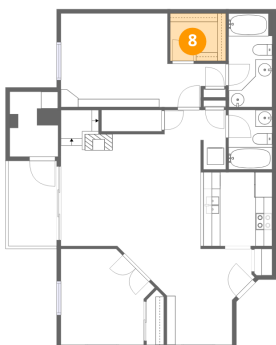
7 Floor 1 - Kitchen



Dimensions: 8'2" x 8'9"
Area: 74 sq. ft
Counted as living area: Yes

Heated: Yes
Finished: Yes
Enclosed: Yes
Contiguous: Yes
Permitted: Yes
Wet space: No
Addition: No
Conversion: No

8 Floor 1 - W.I.C.

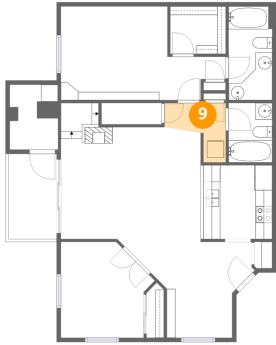


Dimensions: 6'7" x 5'8"
Area: 37 sq. ft
Counted as living area: Yes

Heated: Yes
Finished: Yes
Enclosed: Yes
Contiguous: Yes
Permitted: Yes
Wet space: No
Addition: No
Conversion: No

3600 South Pierce Street, Academy Park, Denver, Jefferson County, Colorado, United States, 80235, #4-207

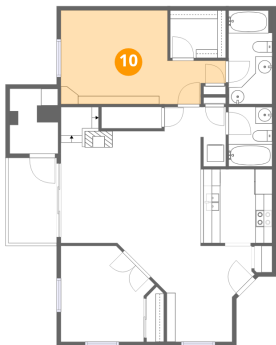
9 Floor 1 - Hall



Dimensions: 7'3" x 7'0"
Area: 34 sq. ft
Counted as living area: Yes

Heated: Yes
Finished: Yes
Enclosed: Yes
Contiguous: Yes
Permitted: Yes
Wet space: No
Addition: No
Conversion: No

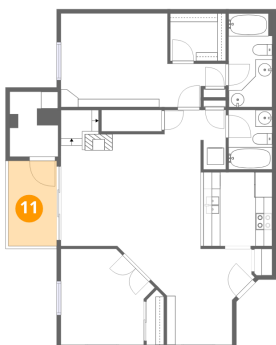
10 Floor 1 - Primary Bedroom



Dimensions: 19'7" x 11'1"
Area: 169 sq. ft
Counted as living area: Yes

Heated: Yes
Finished: Yes
Enclosed: Yes
Contiguous: Yes
Permitted: Yes
Wet space: No
Addition: No
Conversion: No

11 Floor 1 - Balcony

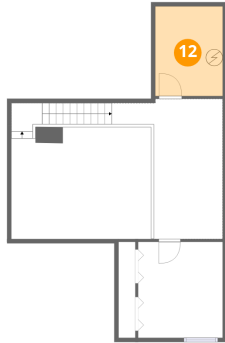


Dimensions: 5'8" x 10'1"
Area: 58 sq. ft
Counted as living area: No

Heated: No
Finished: No
Enclosed: No
Contiguous: Yes
Permitted: Yes
Wet space: No
Addition: No
Conversion: No

3600 South Pierce Street, Academy Park, Denver, Jefferson
County, Colorado, United States, 80235, #4-207

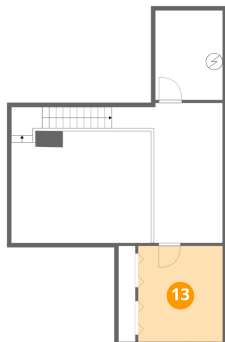
12 Floor 2 - Utility



Dimensions: 8'0" x 10'7"
Area: 85 sq. ft
Counted as living area: No

Heated: Yes
Finished: No
Enclosed: Yes
Contiguous: Yes
Permitted: Yes
Wet space: No
Addition: No
Conversion: No

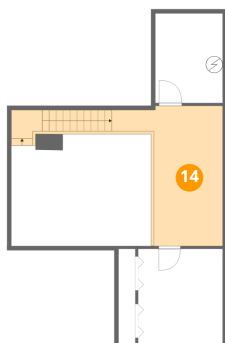
13 Floor 2 - Bedroom



Dimensions: 10'0" x 11'5"
Area: 114 sq. ft
Counted as living area: Yes

Heated: Yes
Finished: Yes
Enclosed: Yes
Contiguous: Yes
Permitted: Yes
Wet space: No
Addition: No
Conversion: No

14 Floor 2 - Loft

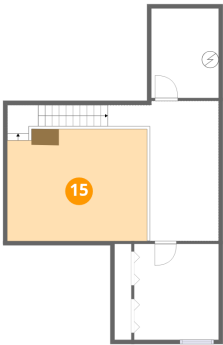


Dimensions: 13'2" x 16'8"
Area: 192 sq. ft
Counted as living area: Yes

Heated: Yes
Finished: Yes
Enclosed: Yes
Contiguous: Yes
Permitted: Yes
Wet space: No
Addition: No
Conversion: No

3600 South Pierce Street, Academy Park, Denver, Jefferson
County, Colorado, United States, 80235, #4-207

15 Floor 2 - Open To Below



Dimensions: 16'7" x 13'3"
Area: 216 sq. ft
Counted as living area: No

Heated: No
Finished: No
Enclosed: No
Contiguous: Yes
Permitted: No
Wet space: No
Addition: No
Conversion: No