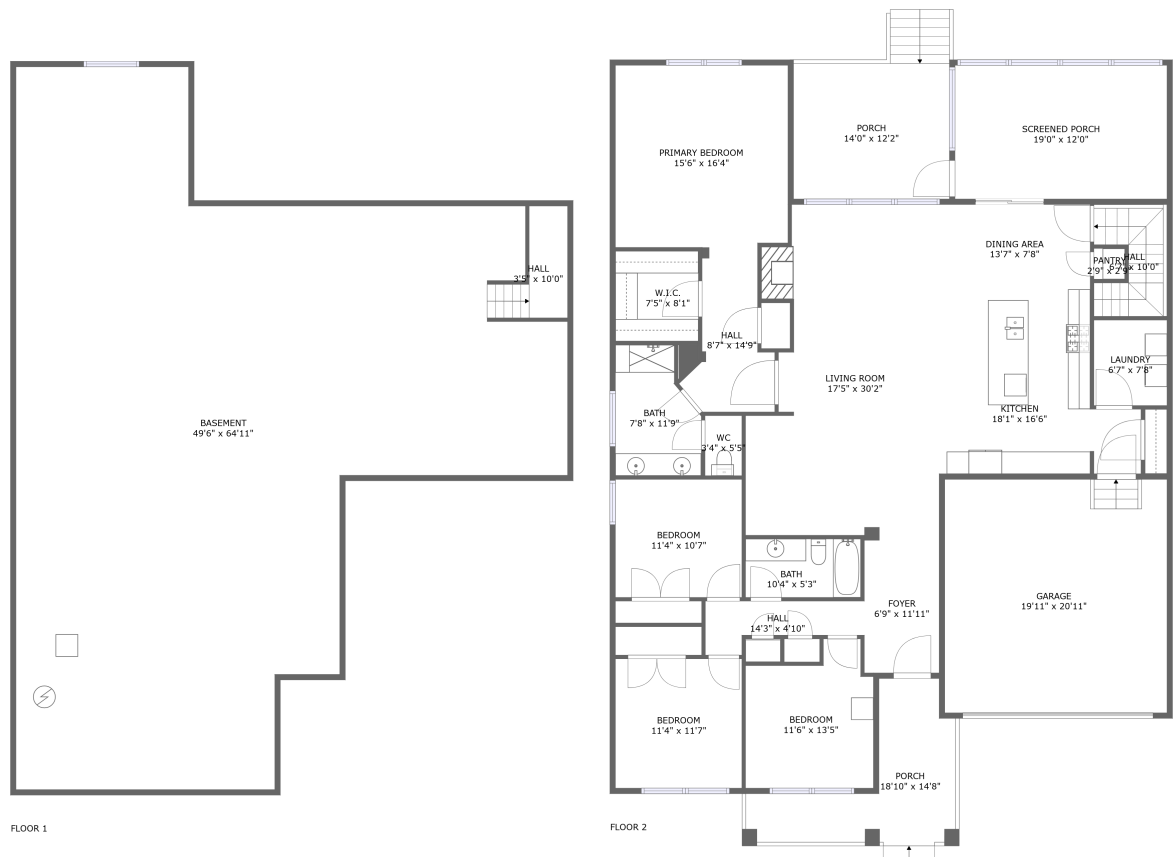


Home report

124 Farmhouse Court, Stephenson, Frederick County, Virginia,
United States, 22656



Total Area: 2201 sq. ft
Below Ground: 52 sq. ft, Floor 2: 2149 sq. ft
Excluded: Basement 2098 sq. ft, Garage 418 sq. ft, Screened porch 228 sq. ft, Porch 342 sq. ft, Walls: 275 sq. ft

Property summary

 **2** Floors

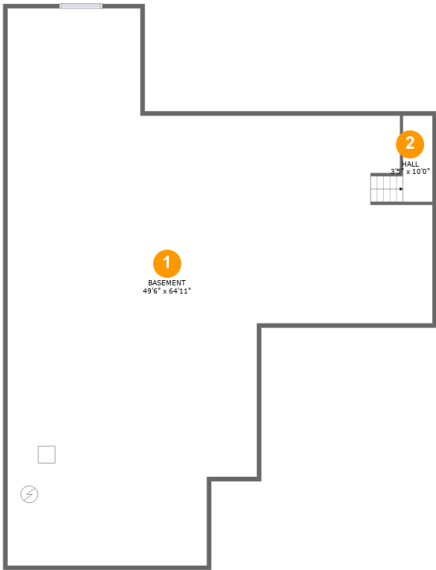
 **4** Bedrooms

 **2** Bathrooms

 **1** Garages

Home report

124 Farmhouse Court, Stephenson, Frederick County, Virginia,
United States, 22656



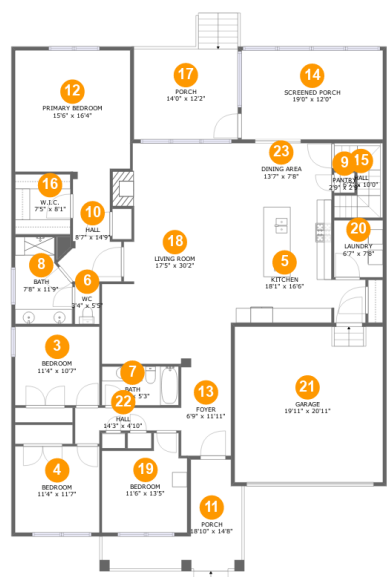
Room dimensions

Floor 1 Below ground Total:52sqft Excluded: 2098sqft

#		Max Dimensions	sqft	Included
1	Basement	49'6" x 64'11"	2098 sq. ft	No
2	Hall	3'5" x 10'0"	46 sq. ft	Yes

Home report

124 Farmhouse Court, Stephenson, Frederick County, Virginia,
United States, 22656



Room dimensions

Floor 2

Total:2149sqft

Excluded: 988sqft

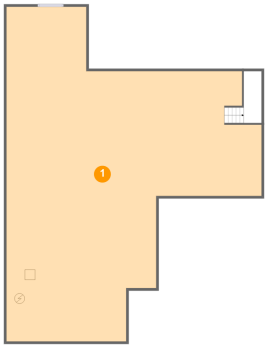
#		Max Dimensions	sqft	Included
3	Bedroom	11'4" x 10'7"	120 sq. ft	Yes
4	Bedroom	11'4" x 11'7"	132 sq. ft	Yes
5	Kitchen	18'1" x 16'6"	250 sq. ft	Yes
6	WC	3'4" x 5'5"	18 sq. ft	Yes
7	Bath	10'4" x 5'3"	54 sq. ft	Yes
8	Bath	7'8" x 11'9"	78 sq. ft	Yes
9	Pantry	2'9" x 2'9"	8 sq. ft	Yes
10	Hall	8'7" x 14'9"	87 sq. ft	Yes
11	Porch	18'10" x 14'8"	148 sq. ft	No
12	Primary Bedroom	15'6" x 16'4"	252 sq. ft	Yes
13	Foyer	6'9" x 11'11"	80 sq. ft	Yes

Home report

**124 Farmhouse Court, Stephenson, Frederick County, Virginia,
United States, 22656**

#		Max Dimensions	sqft	Included
14	Screened Porch	19'0" x 12'0"	228 sq. ft	No
15	Hall	6'7" x 10'0"	55 sq. ft	Yes
16	W.I.C.	7'5" x 8'1"	60 sq. ft	Yes
17	Porch	14'0" x 12'2"	194 sq. ft	No
18	Living Room	17'5" x 30'2"	459 sq. ft	Yes
19	Bedroom	11'6" x 13'5"	133 sq. ft	Yes
20	Laundry	6'7" x 7'8"	50 sq. ft	Yes
21	Garage	19'11" x 20'11"	418 sq. ft	No
22	Hall	14'3" x 4'10"	50 sq. ft	Yes
23	Dining Area	13'7" x 7'8"	104 sq. ft	Yes

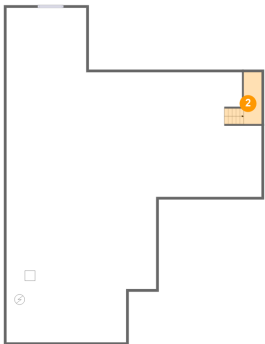
1 Floor 1 - Basement



Max Dimensions: 49'6" x
64'11"
Calculated Area: 2098 sq. ft
Included: No

Heated: Yes
Finished: No
Enclosed: Yes
Contiguous:
Yes
Permitted: Yes
Wet space: No
Addition: No
Conversion: No

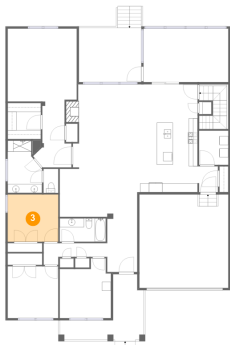
2 Floor 1 - Hall



Max Dimensions: 3'5" x
10'0"
Calculated Area: 46 sq. ft
Included: No

Heated: Yes
Finished: Yes
Enclosed: Yes
Contiguous:
No
Permitted: Yes
Wet space: No
Addition: No
Conversion: No

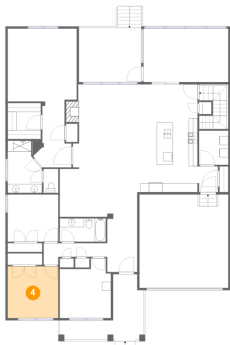
3 Floor 2 - Bedroom



Max Dimensions: 11'4" x 10'7"
Calculated Area: 120 sq. ft
Included: Yes

Heated: Yes
Finished: Yes
Enclosed: Yes
Contiguous: Yes
Permitted: Yes
Wet space: No
Addition: No
Conversion: No

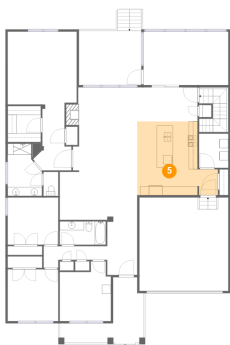
4 Floor 2 - Bedroom



Max Dimensions: 11'4" x 11'7"
Calculated Area: 132 sq. ft
Included: Yes

Heated: Yes
Finished: Yes
Enclosed: Yes
Contiguous: Yes
Permitted: Yes
Wet space: No
Addition: No
Conversion: No

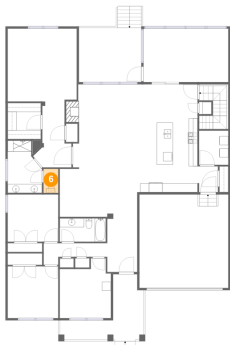
5 Floor 2 - Kitchen



Max Dimensions: 18'1" x 16'6"
Calculated Area: 250 sq. ft
Included: Yes

Heated: Yes
Finished: Yes
Enclosed: Yes
Contiguous: Yes
Permitted: Yes
Wet space: No
Addition: No
Conversion: No

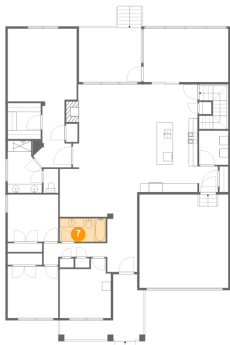
6 Floor 2 - WC



Max Dimensions: 3'4" x 5'5"
Calculated Area: 18 sq. ft
Included: Yes

Heated: Yes
Finished: Yes
Enclosed: Yes
Contiguous: Yes
Permitted: Yes
Wet space: Yes
Addition: No
Conversion: No

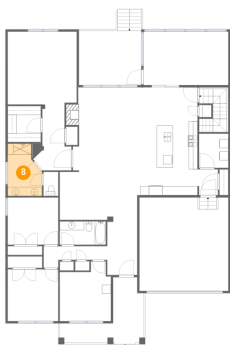
7 Floor 2 - Bath



Max Dimensions: 10'4" x 5'3"
Calculated Area: 54 sq. ft
Included: Yes

Heated: Yes
Finished: Yes
Enclosed: Yes
Contiguous: Yes
Permitted: Yes
Wet space: Yes
Addition: No
Conversion: No

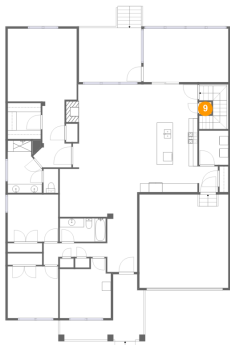
8 Floor 2 - Bath



Max Dimensions: 7'8" x 11'9"
Calculated Area: 78 sq. ft
Included: Yes

Heated: Yes
Finished: Yes
Enclosed: Yes
Contiguous: Yes
Permitted: Yes
Wet space: Yes
Addition: No
Conversion: No

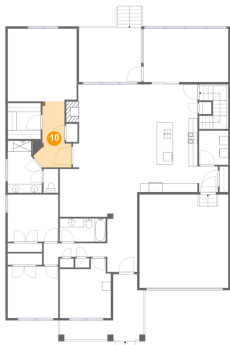
9 Floor 2 - Pantry



Max Dimensions: 2'9" x 2'9"
Calculated Area: 8 sq. ft
Included: Yes

Heated: Yes
Finished: Yes
Enclosed: Yes
Contiguous: Yes
Permitted: Yes
Wet space: No
Addition: No
Conversion: No

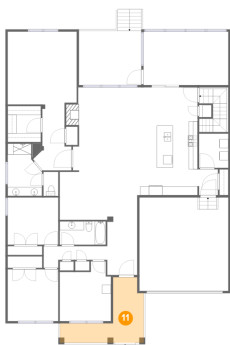
10 Floor 2 - Hall



Max Dimensions: 8'7" x 14'9"
Calculated Area: 87 sq. ft
Included: Yes

Heated: Yes
Finished: Yes
Enclosed: Yes
Contiguous: Yes
Permitted: Yes
Wet space: No
Addition: No
Conversion: No

11 Floor 2 - Porch



Max Dimensions: 18'10" x 14'8"
Calculated Area: 148 sq. ft
Included: No

Heated: No
Finished: Yes
Enclosed: No
Contiguous: Yes
Permitted: Yes
Wet space: No
Addition: No
Conversion: No

124 Farmhouse Court, Stephenson, Frederick County, Virginia,
United States, 22656

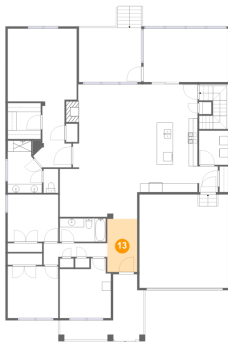
12 Floor 2 - Primary Bedroom



Max Dimensions: 15'6" x
16'4"
Calculated Area: 252 sq. ft
Included: Yes

Heated: Yes
Finished: Yes
Enclosed: Yes
Contiguous:
Yes
Permitted: Yes
Wet space: No
Addition: No
Conversion: No

13 Floor 2 - Foyer



Max Dimensions: 6'9" x
11'11"
Calculated Area: 80 sq. ft
Included: Yes

Heated: Yes
Finished: Yes
Enclosed: Yes
Contiguous:
Yes
Permitted: Yes
Wet space: No
Addition: No
Conversion: No

14 Floor 2 - Screened Porch



Max Dimensions: 19'0" x
12'0"
Calculated Area: 228 sq. ft
Included: No

Heated: No
Finished: Yes
Enclosed: No
Contiguous:
Yes
Permitted: Yes
Wet space: No
Addition: No
Conversion: No

124 Farmhouse Court, Stephenson, Frederick County, Virginia,
United States, 22656

15 Floor 2 - Hall



Max Dimensions: 6'7" x 10'0"
Calculated Area: 55 sq. ft
Included: Yes

Heated: Yes
Finished: Yes
Enclosed: Yes
Contiguous: Yes
Permitted: Yes
Wet space: No
Addition: No
Conversion: No

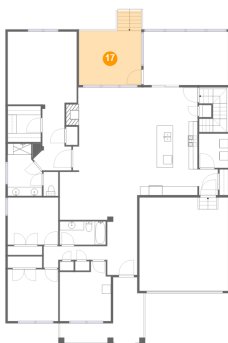
16 Floor 2 - W.I.C.



Max Dimensions: 7'5" x 8'1"
Calculated Area: 60 sq. ft
Included: Yes

Heated: Yes
Finished: Yes
Enclosed: Yes
Contiguous: Yes
Permitted: Yes
Wet space: No
Addition: No
Conversion: No

17 Floor 2 - Porch

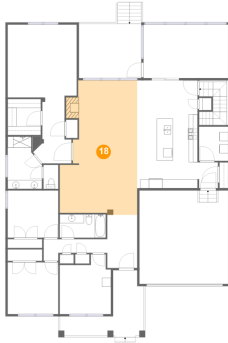


Max Dimensions: 14'0" x 12'2"
Calculated Area: 194 sq. ft
Included: No

Heated: No
Finished: Yes
Enclosed: No
Contiguous: Yes
Permitted: Yes
Wet space: No
Addition: No
Conversion: No

124 Farmhouse Court, Stephenson, Frederick County, Virginia,
United States, 22656

18 Floor 2 - Living Room



Max Dimensions: 17'5" x 30'2"
Calculated Area: 459 sq. ft
Included: Yes

Heated: Yes
Finished: Yes
Enclosed: Yes
Contiguous: Yes
Permitted: Yes
Wet space: No
Addition: No
Conversion: No

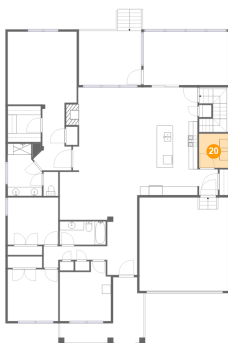
19 Floor 2 - Bedroom



Max Dimensions: 11'6" x 13'5"
Calculated Area: 133 sq. ft
Included: Yes

Heated: Yes
Finished: Yes
Enclosed: Yes
Contiguous: Yes
Permitted: Yes
Wet space: No
Addition: No
Conversion: No

20 Floor 2 - Laundry

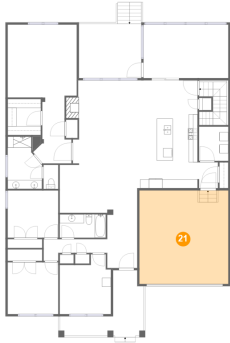


Max Dimensions: 6'7" x 7'8"
Calculated Area: 50 sq. ft
Included: Yes

Heated: Yes
Finished: Yes
Enclosed: Yes
Contiguous: Yes
Permitted: Yes
Wet space: No
Addition: No
Conversion: No

124 Farmhouse Court, Stephenson, Frederick County, Virginia,
United States, 22656

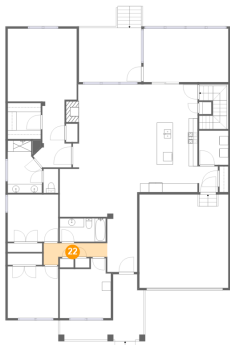
21 Floor 2 - Garage



Max Dimensions: 19'11" x 20'11"
Calculated Area: 418 sq. ft
Included: No

Heated: No
Finished: No
Enclosed: Yes
Contiguous: Yes
Permitted: Yes
Wet space: No
Addition: No
Conversion: No

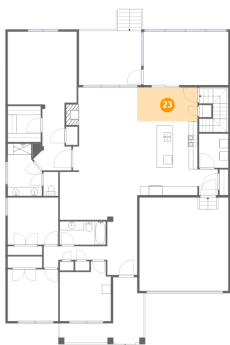
22 Floor 2 - Hall



Max Dimensions: 14'3" x 4'10"
Calculated Area: 50 sq. ft
Included: Yes

Heated: Yes
Finished: Yes
Enclosed: Yes
Contiguous: Yes
Permitted: Yes
Wet space: No
Addition: No
Conversion: No

23 Floor 2 - Dining Area



Max Dimensions: 13'7" x 7'8"
Calculated Area: 104 sq. ft
Included: Yes

Heated: Yes
Finished: Yes
Enclosed: Yes
Contiguous: Yes
Permitted: Yes
Wet space: No
Addition: No
Conversion: No