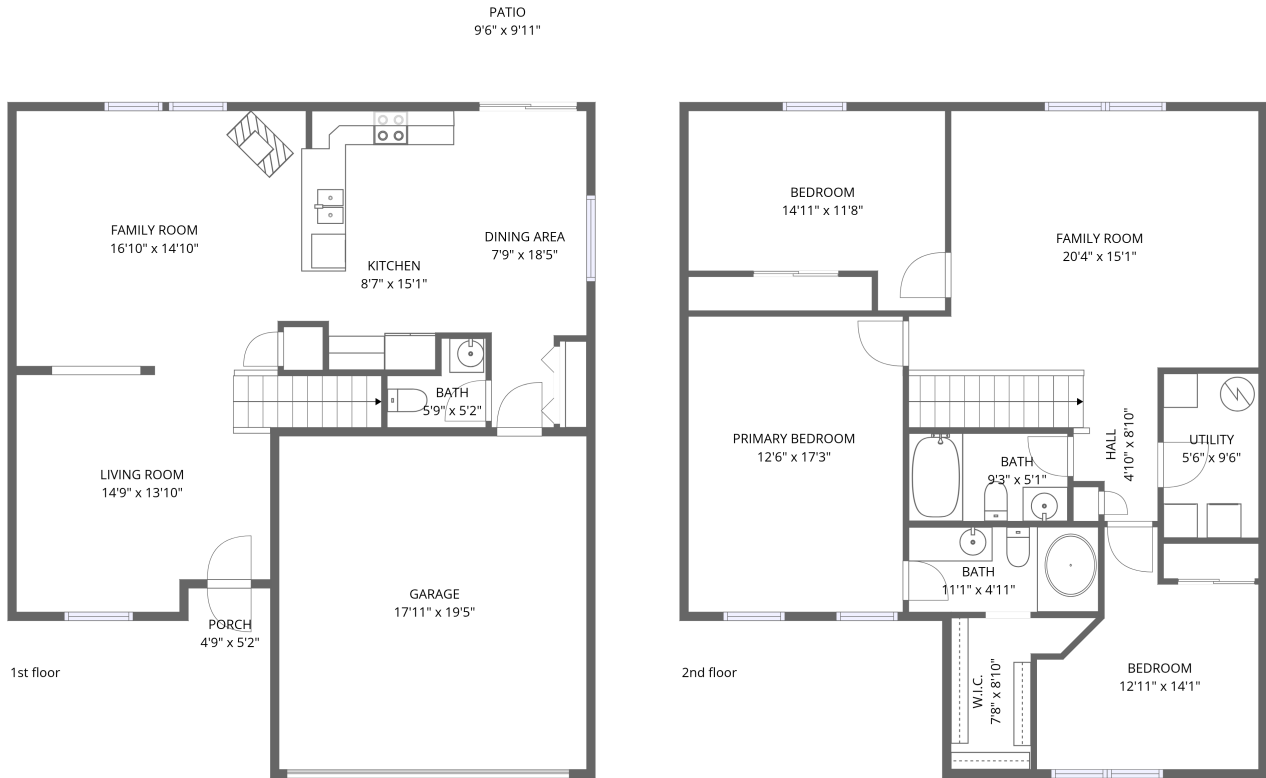


Home data report

949 Balto Dr, Shelbyville, IN, US



Total Area: 1894 sq. ft

1st Floor: 761 sq. ft, 2nd Floor: 1133 sq. ft

Excluded: Garage 348 sq. ft, Patio 95 sq. ft, Porch 25 sq. ft, Walls: 159 sq. ft

Property summary

 **2** Floors

 **3** Bedrooms

 **2** Bathrooms

Home data report

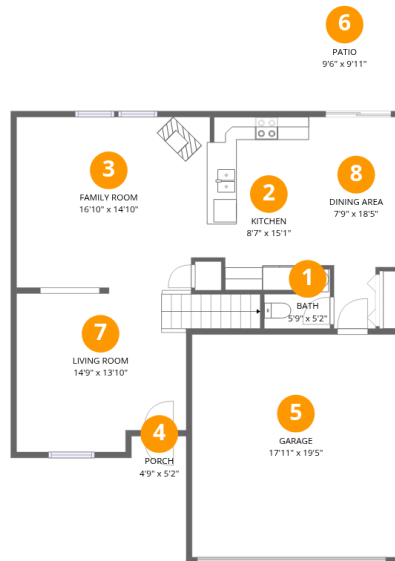
949 Balto Dr, Shelbyville, IN, US

 **1**
Half baths

 **1**
Garages

Home data report

949 Balto Dr, Shelbyville, IN, US

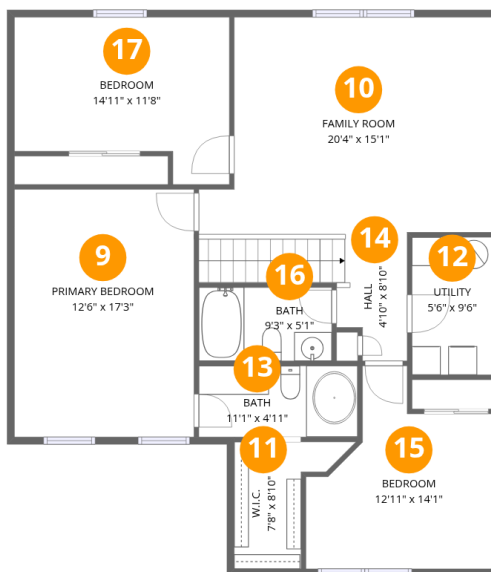


Room dimensions

Floor 1

Total: 761 sqft Excluded: 468 sqft

#		Dimensions	sqft	Counted as living area
1	Bath	5'9" x 5'2"	30 sq. ft	Yes
2	Kitchen	8'7" x 15'1"	130 sq. ft	Yes
3	Family Room	16'10" x 14'10"	250 sq. ft	Yes
4	Porch	4'9" x 5'2"	25 sq. ft	No
5	Garage	17'11" x 19'5"	347 sq. ft	No
6	Patio	9'6" x 9'11"	95 sq. ft	No
7	Living Room	14'9" x 13'10"	204 sq. ft	Yes
8	Dining Area	7'9" x 18'5"	143 sq. ft	Yes



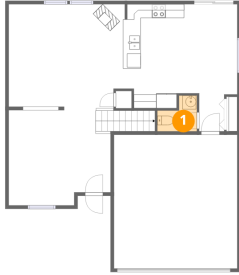
Room dimensions

Floor 2

Total: 1133 sqft Excluded: 0 sqft

#		Dimensions	sqft	Counted as living area
9	Primary Bedroom	12'6" x 17'3"	215 sq. ft	Yes
10	Family Room	20'4" x 15'1"	307 sq. ft	Yes
11	W.I.C.	7'8" x 8'10"	68 sq. ft	Yes
12	Utility	5'6" x 9'6"	53 sq. ft	Yes
13	Bath	11'1" x 4'11"	55 sq. ft	Yes
14	Hall	4'10" x 8'10"	43 sq. ft	Yes
15	Bedroom	12'11" x 14'1"	182 sq. ft	Yes
16	Bath	9'3" x 5'1"	47 sq. ft	Yes
17	Bedroom	14'11" x 11'8"	174 sq. ft	Yes

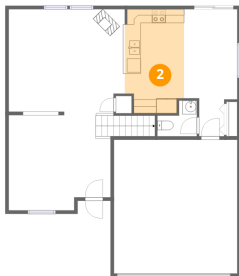
1 Floor 1 - Bath



Dimensions: 5'9" x 5'2"
Area: 30 sq. ft
Counted as living area: Yes

Heated: Yes
Finished: Yes
Enclosed: Yes
Contiguous: Yes
Permitted: Yes
Wet space: Yes
Addition: No
Conversion: No

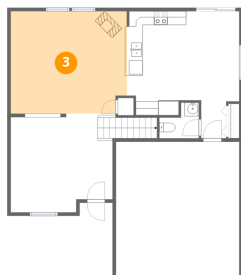
2 Floor 1 - Kitchen



Dimensions: 8'7" x 15'1"
Area: 130 sq. ft
Counted as living area: Yes

Heated: Yes
Finished: Yes
Enclosed: Yes
Contiguous: Yes
Permitted: Yes
Wet space: No
Addition: No
Conversion: No

3 Floor 1 - Family Room



Dimensions: 16'10" x 14'10"
Area: 250 sq. ft
Counted as living area: Yes

Heated: Yes
Finished: Yes
Enclosed: Yes
Contiguous: Yes
Permitted: Yes
Wet space: No
Addition: No
Conversion: No

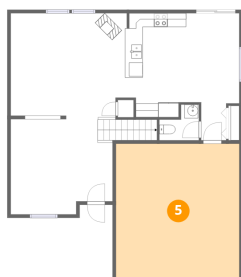
4 Floor 1 - Porch



Dimensions: 4'9" x 5'2"
Area: 25 sq. ft
Counted as living area: No

Heated: No
Finished: No
Enclosed: No
Contiguous: Yes
Permitted: Yes
Wet space: No
Addition: No
Conversion: No

5 Floor 1 - Garage



Dimensions: 17'11" x 19'5"
Area: 347 sq. ft
Counted as living area: No

Heated: No
Finished: No
Enclosed: Yes
Contiguous: Yes
Permitted: Yes
Wet space: No
Addition: No
Conversion: No

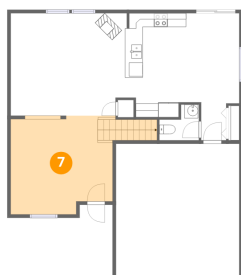
6 Floor 1 - Patio



Dimensions: 9'6" x 9'11"
Area: 95 sq. ft
Counted as living area: No

Heated: No
Finished: No
Enclosed: No
Contiguous: Yes
Permitted: Yes
Wet space: No
Addition: No
Conversion: No

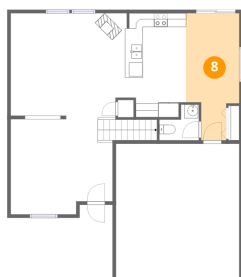
7 Floor 1 - Living Room



Dimensions: 14'9" x 13'10"
Area: 204 sq. ft
Counted as living area: Yes

Heated: Yes
Finished: Yes
Enclosed: Yes
Contiguous: Yes
Permitted: Yes
Wet space: No
Addition: No
Conversion: No

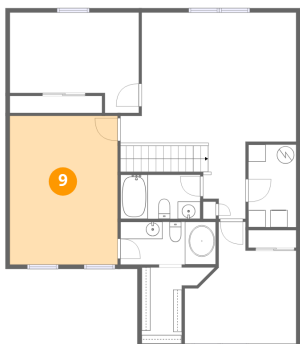
8 Floor 1 - Dining Area



Dimensions: 7'9" x 18'5"
Area: 143 sq. ft
Counted as living area: Yes

Heated: Yes
Finished: Yes
Enclosed: Yes
Contiguous: Yes
Permitted: Yes
Wet space: No
Addition: No
Conversion: No

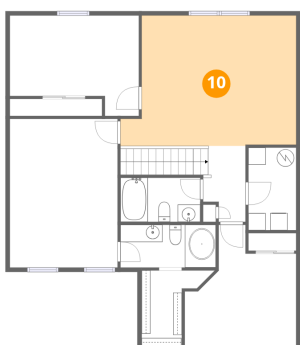
9 Floor 2 - Primary Bedroom



Dimensions: 12'6" x 17'3"
Area: 215 sq. ft
Counted as living area: Yes

Heated: Yes
Finished: Yes
Enclosed: Yes
Contiguous: Yes
Permitted: Yes
Wet space: No
Addition: No
Conversion: No

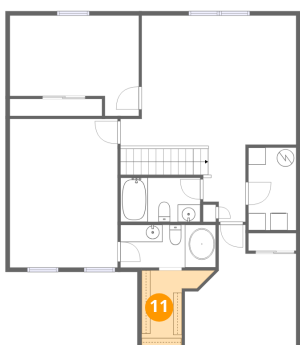
10 Floor 2 - Family Room



Dimensions: 20'4" x 15'1"
Area: 307 sq. ft
Counted as living area: Yes

Heated: Yes
Finished: Yes
Enclosed: Yes
Contiguous: Yes
Permitted: Yes
Wet space: No
Addition: No
Conversion: No

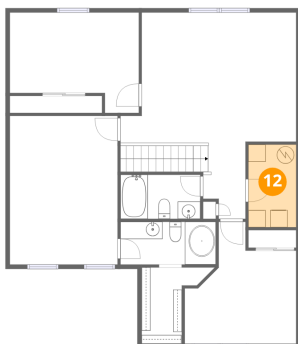
11 Floor 2 - W.I.C.



Dimensions: 7'8" x 8'10"
Area: 68 sq. ft
Counted as living area: Yes

Heated: Yes
Finished: Yes
Enclosed: Yes
Contiguous: Yes
Permitted: Yes
Wet space: No
Addition: No
Conversion: No

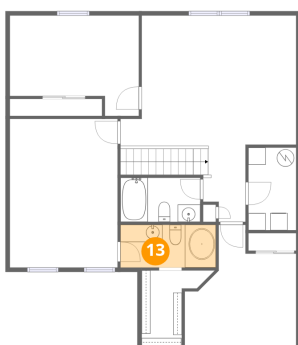
12 Floor 2 - Utility



Dimensions: 5'6" x 9'6"
Area: 53 sq. ft
Counted as living area: Yes

Heated: Yes
Finished: Yes
Enclosed: Yes
Contiguous: Yes
Permitted: Yes
Wet space: No
Addition: No
Conversion: No

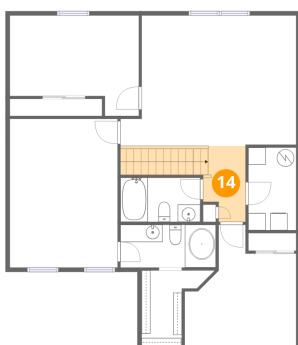
13 Floor 2 - Bath



Dimensions: 11'1" x 4'11"
Area: 55 sq. ft
Counted as living area: Yes

Heated: Yes
Finished: Yes
Enclosed: Yes
Contiguous: Yes
Permitted: Yes
Wet space: Yes
Addition: No
Conversion: No

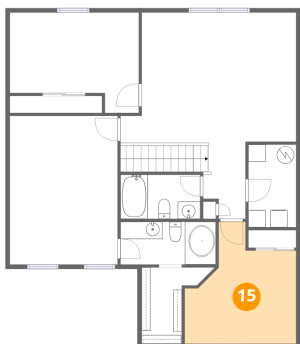
14 Floor 2 - Hall



Dimensions: 4'10" x 8'10"
Area: 43 sq. ft
Counted as living area: Yes

Heated: Yes
Finished: Yes
Enclosed: Yes
Contiguous: Yes
Permitted: Yes
Wet space: No
Addition: No
Conversion: No

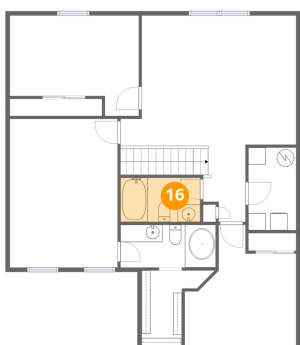
15 Floor 2 - Bedroom



Dimensions: 12'11" x 14'1"
Area: 182 sq. ft
Counted as living area: Yes

Heated: Yes
Finished: Yes
Enclosed: Yes
Contiguous: Yes
Permitted: Yes
Wet space: No
Addition: No
Conversion: No

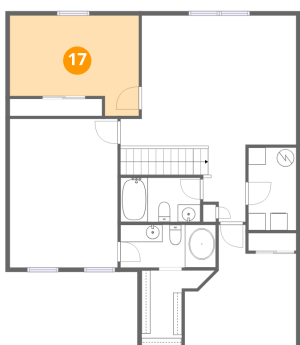
16 Floor 2 - Bath



Dimensions: 9'3" x 5'1"
Area: 47 sq. ft
Counted as living area: Yes

Heated: Yes
Finished: Yes
Enclosed: Yes
Contiguous: Yes
Permitted: Yes
Wet space: Yes
Addition: No
Conversion: No

17 Floor 2 - Bedroom



Dimensions: 14'11" x 11'8"
Area: 174 sq. ft
Counted as living area: Yes

Heated: Yes
Finished: Yes
Enclosed: Yes
Contiguous: Yes
Permitted: Yes
Wet space: No
Addition: No
Conversion: No