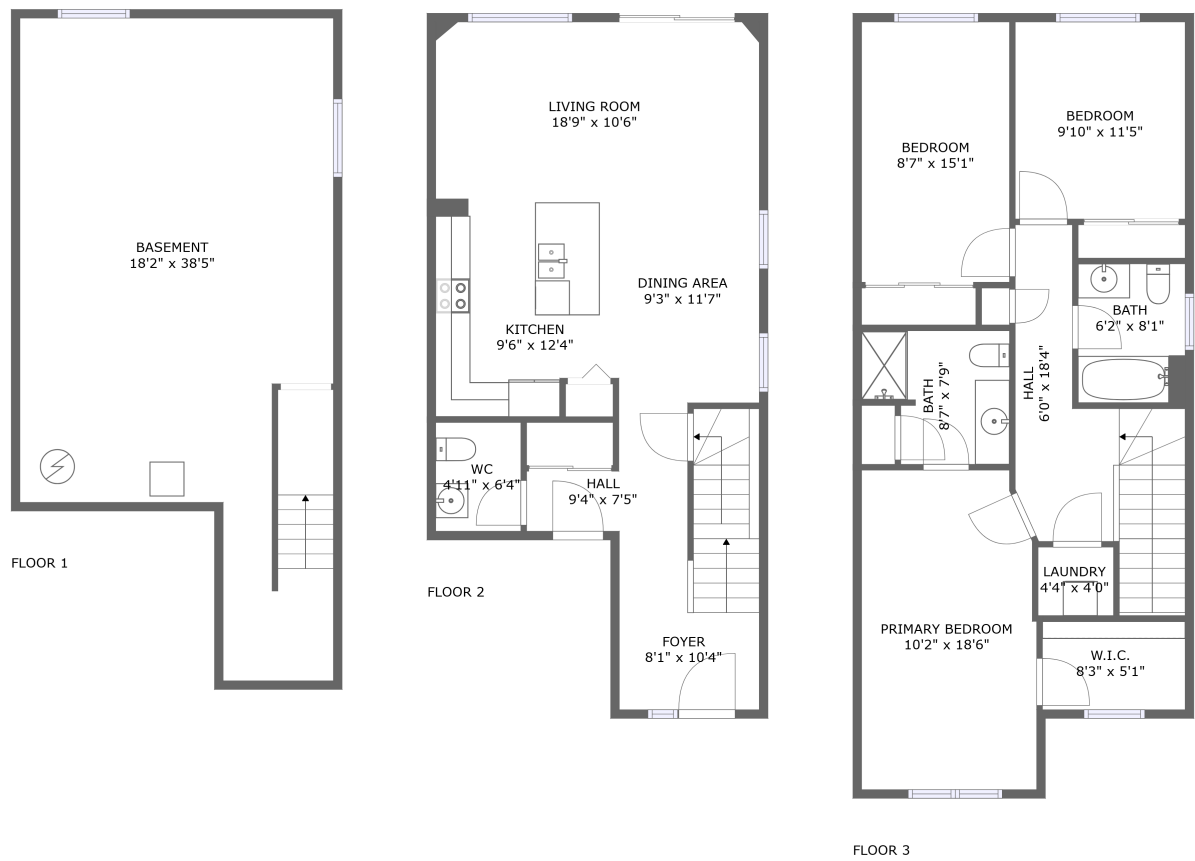


Home report

17 Vimy Ridge Cres, Arnprior, Renfrew County, Ontario, Canada,
K7S 0H7, 15 Vimy Ridge Cres



Total Area: 1430 sq. ft

Below Ground: 0 sq. ft, Floor 2: 637 sq. ft, Floor 3: 793 sq. ft

Excluded: Basement 575 sq. ft, Walls: 154 sq. ft

Property summary

 **3** Floors

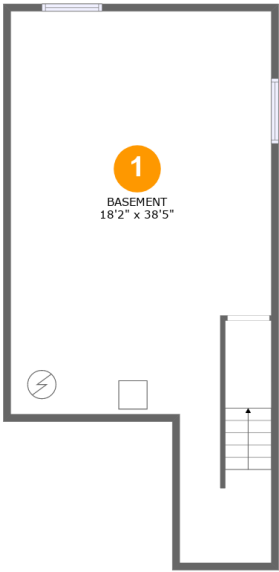
 **3** Bedrooms

 **2** Bathrooms

 **1** Half baths

Home report

17 Vimy Ridge Cres, Arnprior, Renfrew County, Ontario, Canada,
K7S 0H7, 15 Vimy Ridge Cres



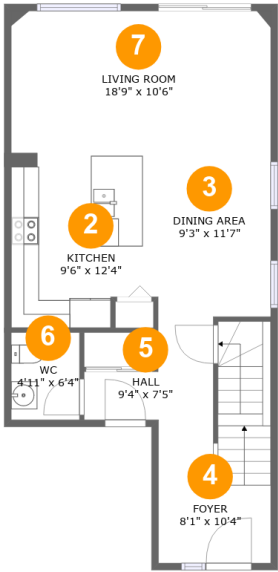
Room dimensions

Floor 1 Below ground Total:0sqft Excluded: 575sqft

#		Max Dimensions	sqft	Included
1	Basement	18'2" x 38'5"	570 sq. ft	No

Home report

17 Vimy Ridge Cres, Arnprior, Renfrew County, Ontario, Canada,
K7S 0H7, 15 Vimy Ridge Cres



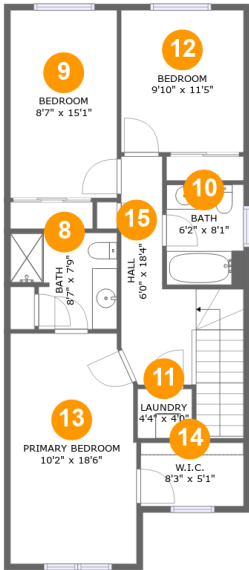
Room dimensions

Floor 2 Total:637sqft Excluded: 0sqft

#		Max Dimensions	sqft	Included
2	Kitchen	9'6" x 12'4"	111 sq. ft	Yes
3	Dining Area	9'3" x 11'7"	106 sq. ft	Yes
4	Foyer	8'1" x 10'4"	110 sq. ft	Yes
5	Hall	9'4" x 7'5"	48 sq. ft	Yes
6	WC	4'11" x 6'4"	31 sq. ft	Yes
7	Living Room	18'9" x 10'6"	196 sq. ft	Yes

Home report

17 Vimy Ridge Cres, Arnprior, Renfrew County, Ontario, Canada,
K7S 0H7, 15 Vimy Ridge Cres



Room dimensions

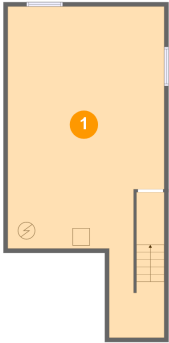
Floor 3

Total:793sqft

Excluded: 0sqft

#		Max Dimensions	sqft	Included
8	Bath	8'7" x 7'9"	57 sq. ft	Yes
9	Bedroom	8'7" x 15'1"	129 sq. ft	Yes
10	Bath	6'2" x 8'1"	50 sq. ft	Yes
11	Laundry	4'4" x 4'0"	17 sq. ft	Yes
12	Bedroom	9'10" x 11'5"	112 sq. ft	Yes
13	Primary Bedroom	10'2" x 18'6"	182 sq. ft	Yes
14	W.I.C.	8'3" x 5'1"	42 sq. ft	Yes
15	Hall	6'0" x 18'4"	125 sq. ft	Yes

1 Floor 1 - Basement



Max Dimensions: 18'2" x 38'5"
Calculated Area: 570 sq. ft
Included: No

Heated: Yes
Finished: No
Enclosed: Yes
Contiguous: Yes
Permitted: Yes
Wet space: No
Addition: No
Conversion: No

2 Floor 2 - Kitchen



Max Dimensions: 9'6" x 12'4"
Calculated Area: 111 sq. ft
Included: Yes

Heated: Yes
Finished: Yes
Enclosed: Yes
Contiguous: Yes
Permitted: Yes
Wet space: No
Addition: No
Conversion: No

3 Floor 2 - Dining Area



Max Dimensions: 9'3" x 11'7"
Calculated Area: 106 sq. ft
Included: Yes

Heated: Yes
Finished: Yes
Enclosed: Yes
Contiguous: Yes
Permitted: Yes
Wet space: No
Addition: No
Conversion: No

4 Floor 2 - Foyer



Max Dimensions: 8'1" x 10'4"
Calculated Area: 110 sq. ft
Included: Yes

Heated: Yes
Finished: Yes
Enclosed: Yes
Contiguous: Yes
Permitted: Yes
Wet space: No
Addition: No
Conversion: No

5 Floor 2 - Hall



Max Dimensions: 9'4" x 7'5"
Calculated Area: 48 sq. ft
Included: Yes

Heated: Yes
Finished: Yes
Enclosed: Yes
Contiguous: Yes
Permitted: Yes
Wet space: No
Addition: No
Conversion: No

6 Floor 2 - WC



Max Dimensions: 4'11" x 6'4"
Calculated Area: 31 sq. ft
Included: Yes

Heated: Yes
Finished: Yes
Enclosed: Yes
Contiguous: Yes
Permitted: Yes
Wet space: Yes
Addition: No
Conversion: No

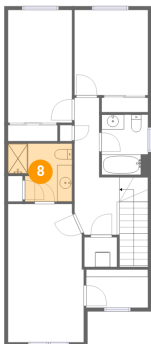
7 Floor 2 - Living Room



Max Dimensions: 18'9" x 10'6"
Calculated Area: 196 sq. ft
Included: Yes

Heated: Yes
Finished: Yes
Enclosed: Yes
Contiguous: Yes
Permitted: Yes
Wet space: No
Addition: No
Conversion: No

8 Floor 3 - Bath



Max Dimensions: 8'7" x 7'9"
Calculated Area: 57 sq. ft
Included: Yes

Heated: Yes
Finished: Yes
Enclosed: Yes
Contiguous: Yes
Permitted: Yes
Wet space: Yes
Addition: No
Conversion: No

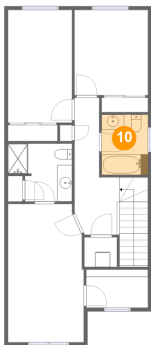
9 Floor 3 - Bedroom



Max Dimensions: 8'7" x 15'1"
Calculated Area: 129 sq. ft
Included: Yes

Heated: Yes
Finished: Yes
Enclosed: Yes
Contiguous: Yes
Permitted: Yes
Wet space: No
Addition: No
Conversion: No

10 Floor 3 - Bath



Max Dimensions: 6'2" x 8'1"
Calculated Area: 50 sq. ft
Included: Yes

Heated: Yes
Finished: Yes
Enclosed: Yes
Contiguous: Yes
Permitted: Yes
Wet space: Yes
Addition: No
Conversion: No

11 Floor 3 - Laundry



Max Dimensions: 4'4" x 4'0"
Calculated Area: 17 sq. ft
Included: Yes

Heated: Yes
Finished: Yes
Enclosed: Yes
Contiguous: Yes
Permitted: Yes
Wet space: No
Addition: No
Conversion: No

12 Floor 3 - Bedroom



Max Dimensions: 9'10" x 11'5"
Calculated Area: 112 sq. ft
Included: Yes

Heated: Yes
Finished: Yes
Enclosed: Yes
Contiguous: Yes
Permitted: Yes
Wet space: No
Addition: No
Conversion: No

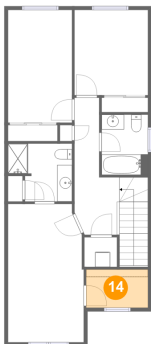
13 Floor 3 - Primary Bedroom



Max Dimensions: 10'2" x 18'6"
Calculated Area: 182 sq. ft
Included: Yes

Heated: Yes
Finished: Yes
Enclosed: Yes
Contiguous: Yes
Permitted: Yes
Wet space: No
Addition: No
Conversion: No

14 Floor 3 - W.I.C.



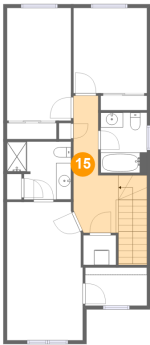
Max Dimensions: 8'3" x 5'1"
Calculated Area: 42 sq. ft
Included: Yes

Heated: Yes
Finished: Yes
Enclosed: Yes
Contiguous: Yes
Permitted: Yes
Wet space: No
Addition: No
Conversion: No

Home report

17 Vimy Ridge Cres, Arnprior, Renfrew County, Ontario, Canada,
K7S 0H7, 15 Vimy Ridge Cres

15 Floor 3 - Hall



Max Dimensions: 6'0" x 18'4"
Calculated Area: 125 sq. ft
Included: Yes

Heated: Yes
Finished: Yes
Enclosed: Yes
Contiguous: Yes
Permitted: Yes
Wet space: No
Addition: No
Conversion: No