




**Total Area: 1325 sq. ft**

1st Floor: 146 sq. ft, 2nd Floor: 562 sq. ft, 3rd Floor: 617 sq. ft  
Excluded: Garage 375 sq. ft, Balcony 83 sq. ft, Walls: 132 sq. ft

**Property summary**

 **3** Floors

 **3** Bedrooms

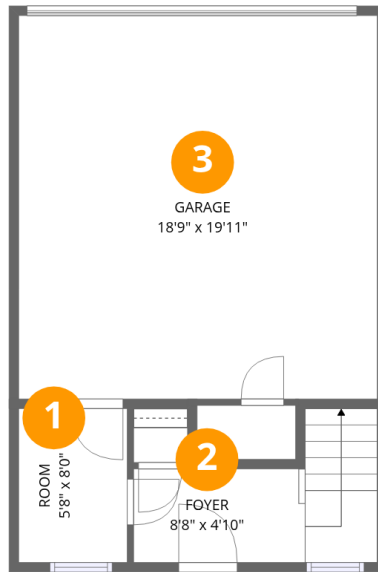
 **2** Bathrooms

Home data report

# 485 Jenny Wy, Brighton, MI, US

 **1**  
Half baths

 **1**  
Garages



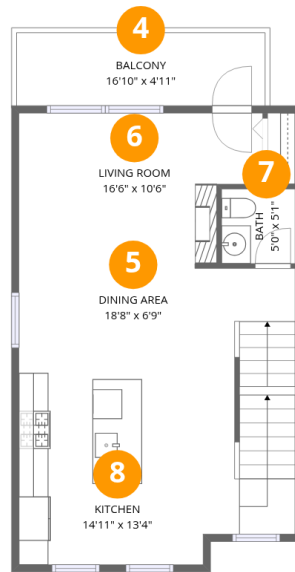
## Room dimensions

Floor 1

Total:146sqft

Excluded: 375sqft

#		Dimensions	sqft	Counted as living area
1	Room	5'8" x 8'0"	46 sq. ft	Yes
2	Foyer	8'8" x 4'10"	42 sq. ft	Yes
3	Garage	18'9" x 19'11"	373 sq. ft	No

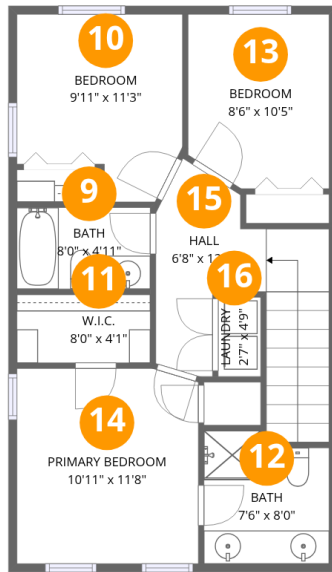


## Room dimensions

Floor 2

Total: 562sqft Excluded: 83sqft

#		Dimensions	sqft	Counted as living area
4	Balcony	16'10" x 4'11"	82 sq. ft	No
5	Dining Area	18'8" x 6'9"	126 sq. ft	Yes
6	Living Room	16'6" x 10'6"	173 sq. ft	Yes
7	Bath	5'0" x 5'1"	25 sq. ft	Yes
8	Kitchen	14'11" x 13'4"	200 sq. ft	Yes



## Room dimensions

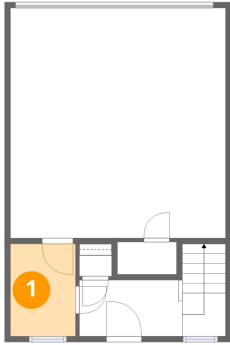
Floor 3

Total:617sqft Excluded: 0sqft

#		Dimensions	sqft	Counted as living area
9	Bath	8'0" x 4'11"	39 sq. ft	Yes
10	Bedroom	9'11" x 11'3"	111 sq. ft	Yes
11	W.I.C.	8'0" x 4'11"	33 sq. ft	Yes
12	Bath	7'6" x 8'0"	60 sq. ft	Yes
13	Bedroom	8'6" x 10'5"	88 sq. ft	Yes
14	Primary Bedroom	10'11" x 11'8"	127 sq. ft	Yes
15	Hall	6'8" x 12'7"	83 sq. ft	Yes
16	Laundry	2'7" x 4'9"	12 sq. ft	Yes

## 1 Floor 1 - Room

---

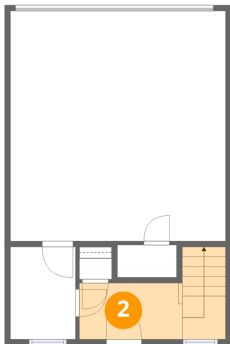


Dimensions: 5'8" x 8'0"  
Area: 46 sq. ft  
Counted as living area: Yes

Heated: Yes  
Finished: Yes  
Enclosed: Yes  
Contiguous: Yes  
Permitted: Yes  
Wet space: No  
Addition: No  
Conversion: No

## 2 Floor 1 - Foyer

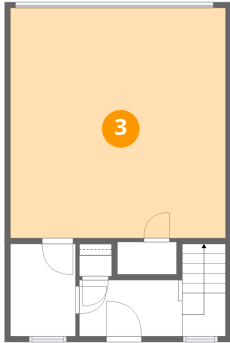
---



Dimensions: 8'8" x 4'10"  
Area: 42 sq. ft  
Counted as living area: Yes

Heated: Yes  
Finished: Yes  
Enclosed: Yes  
Contiguous: Yes  
Permitted: Yes  
Wet space: No  
Addition: No  
Conversion: No

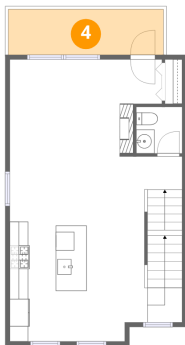
### 3 Floor 1 - Garage



Dimensions: 18'9" x 19'11"  
Area: 373 sq. ft  
Counted as living area: No

Heated: No  
Finished: No  
Enclosed: Yes  
Contiguous: Yes  
Permitted: Yes  
Wet space: No  
Addition: No  
Conversion: No

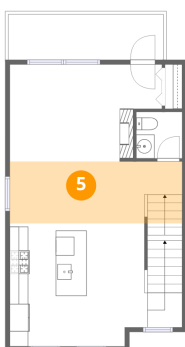
### 4 Floor 2 - Balcony



Dimensions: 16'10" x 4'11"  
Area: 82 sq. ft  
Counted as living area: No

Heated: No  
Finished: No  
Enclosed: No  
Contiguous: Yes  
Permitted: Yes  
Wet space: No  
Addition: No  
Conversion: No

### 5 Floor 2 - Dining Area



Dimensions: 18'8" x 6'9"  
Area: 126 sq. ft  
Counted as living area: Yes

Heated: Yes  
Finished: Yes  
Enclosed: Yes  
Contiguous: Yes  
Permitted: Yes  
Wet space: No  
Addition: No  
Conversion: No

## 6 Floor 2 - Living Room



Dimensions: 16'6" x 10'6"  
Area: 173 sq. ft  
Counted as living area: Yes

Heated: Yes  
Finished: Yes  
Enclosed: Yes  
Contiguous: Yes  
Permitted: Yes  
Wet space: No  
Addition: No  
Conversion: No

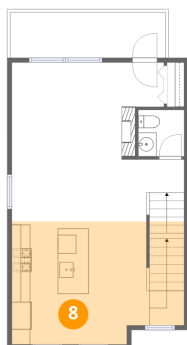
## 7 Floor 2 - Bath



Dimensions: 5'0" x 5'1"  
Area: 25 sq. ft  
Counted as living area: Yes

Heated: Yes  
Finished: Yes  
Enclosed: Yes  
Contiguous: Yes  
Permitted: Yes  
Wet space: Yes  
Addition: No  
Conversion: No

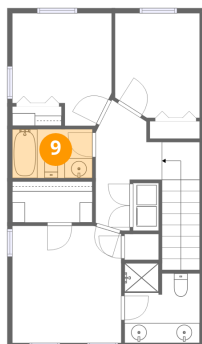
## 8 Floor 2 - Kitchen



Dimensions: 14'11" x 13'4"  
Area: 200 sq. ft  
Counted as living area: Yes

Heated: Yes  
Finished: Yes  
Enclosed: Yes  
Contiguous: Yes  
Permitted: Yes  
Wet space: No  
Addition: No  
Conversion: No

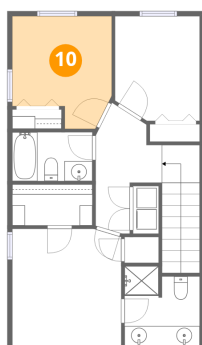
### 9 Floor 3 - Bath



Dimensions: 8'0" x 4'11"  
Area: 39 sq. ft  
Counted as living area: Yes

Heated: Yes  
Finished: Yes  
Enclosed: Yes  
Contiguous: Yes  
Permitted: Yes  
Wet space: Yes  
Addition: No  
Conversion: No

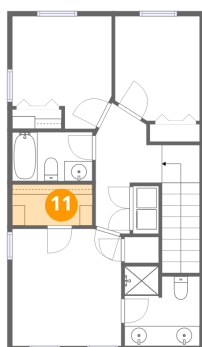
### 10 Floor 3 - Bedroom



Dimensions: 9'11" x 11'3"  
Area: 111 sq. ft  
Counted as living area: Yes

Heated: Yes  
Finished: Yes  
Enclosed: Yes  
Contiguous: Yes  
Permitted: Yes  
Wet space: No  
Addition: No  
Conversion: No

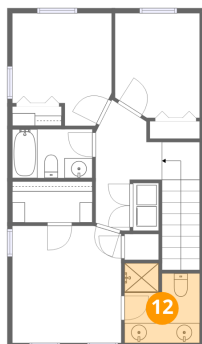
### 11 Floor 3 - W.I.C.



Dimensions: 8'0" x 4'1"  
Area: 33 sq. ft  
Counted as living area: Yes

Heated: Yes  
Finished: Yes  
Enclosed: Yes  
Contiguous: Yes  
Permitted: Yes  
Wet space: No  
Addition: No  
Conversion: No

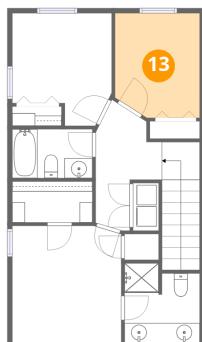
### 12 Floor 3 - Bath



Dimensions: 7'6" x 8'0"  
Area: 60 sq. ft  
Counted as living area: Yes

Heated: Yes  
Finished: Yes  
Enclosed: Yes  
Contiguous: Yes  
Permitted: Yes  
Wet space: Yes  
Addition: No  
Conversion: No

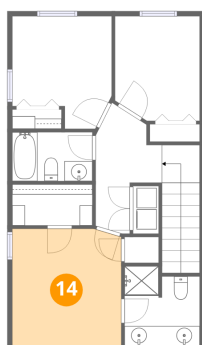
### 13 Floor 3 - Bedroom



Dimensions: 8'6" x 10'5"  
Area: 88 sq. ft  
Counted as living area: Yes

Heated: Yes  
Finished: Yes  
Enclosed: Yes  
Contiguous: Yes  
Permitted: Yes  
Wet space: No  
Addition: No  
Conversion: No

### 14 Floor 3 - Primary Bedroom

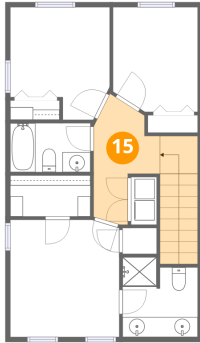


Dimensions: 10'11" x 11'8"  
Area: 127 sq. ft  
Counted as living area: Yes

Heated: Yes  
Finished: Yes  
Enclosed: Yes  
Contiguous: Yes  
Permitted: Yes  
Wet space: No  
Addition: No  
Conversion: No

**15** Floor 3 - Hall

---

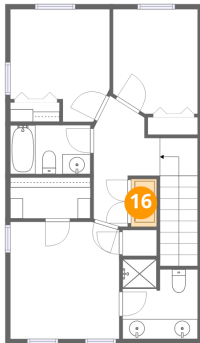


Dimensions: 6'8" x 12'7"  
Area: 83 sq. ft  
Counted as living area: Yes

Heated: Yes  
Finished: Yes  
Enclosed: Yes  
Contiguous: Yes  
Permitted: Yes  
Wet space: No  
Addition: No  
Conversion: No

**16** Floor 3 - Laundry

---



Dimensions: 2'7" x 4'9"  
Area: 12 sq. ft  
Counted as living area: Yes

Heated: Yes  
Finished: Yes  
Enclosed: Yes  
Contiguous: Yes  
Permitted: Yes  
Wet space: No  
Addition: No  
Conversion: No