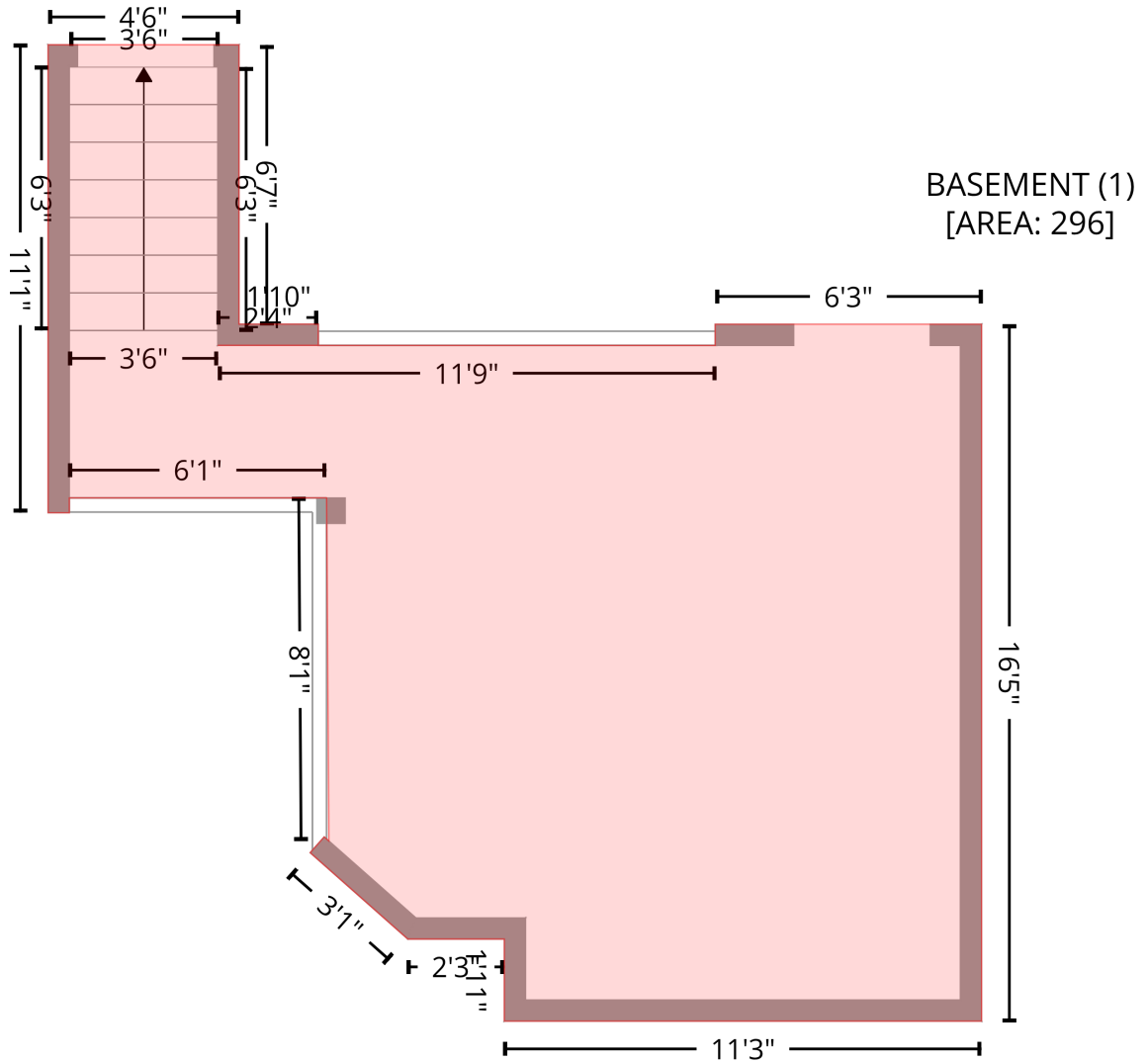


# 615 South Main Street, Blackstone, Nottoway County, Virginia, United States, 23824

Gross Living Area: 3626 sq. ft

## Level 1 - Below Grade

Basement  
[AREA: 0]



Space	Area (sq. ft)	Calculation
BASEMENT (Non-living area)	296	Coordinate Polygon Area Algorithm using inches $-((427.3 + 427.3) * (327.7 - 406.8) + (427.3 + 449.8) * (406.8 - 406.8) + (449.8 + 449.8) * (406.8 - 412.8) + (449.8 + 421.3) * (412.8 - 412.8) + (421.3 + 562.1) * (412.8 - 412.9) + (562.1 + 562.1) * (412.9 - 406.9) + (562.1 + 637.6) * (406.9 - 406.9) + (637.6 + 637.6) * (406.9 - 604.2) + (637.6 + 502.4) * (604.2 - 604.2) + (502.4 + 502.4) * (604.2 - 581) + (502.4 + 475.1) * (581 - 581) + (475.1 + 447.5) * (581 - 556.5) + (447.5 + 451.5) * (556.5 - 552) + (451.5 + 452.8) * (552 - 553.2) + (452.8 + 452.1) * (553.2 - 456.1) + (452.1 + 379.3) * (456.1 - 456.1) + (379.3 + 379.3) * (456.1 - 460.3) + (379.3 + 373.3) * (460.3 - 460.3) + (373.3 + 373.3) * (460.3 - 327.7) + (373.3 + 427.3) * (327.7 - 327.7)) * 0.5 * 0.00694$

# 615 South Main Street, Blackstone, Nottoway County, Virginia, United States, 23824

Gross Living Area: 3626 sq. ft

## Level 2



Space	Area (sq. ft)	Calculation <small>Coordinate Polygon Area Algorithm using inches</small>
1st floor (Living area)	1990	$-\left((568.3 + 568.3) * (178.9 - 406.9) + (568.3 + 637.6) * (406.9 - 406.9) + (637.6 + 637.6) * (406.9 - 604.2) + (637.6 + 539.6) * (604.2 - 604.2) + (539.6 + 539.6) * (604.2 - 795.6) + (539.6 + 135.5) * (795.6 - 795.6) + (135.5 + 135.5) * (795.6 - 593.2) + (135.5 + 43.7) * (593.2 - 593.2) + (43.7 + 43.7) * (593.2 - 406.9) + (43.7 + 159.7) * (406.9 - 406.9) + (159.7 + 159.7) * (406.9 - 178.9) + (159.7 + 568.3) * (178.9 - 178.9)\right) * 0.5 * 0.00694$
COVERED DECK (Non-living area)	247	$-\left((729.6 + 729.6) * (604.2 - 791.6) + (729.6 + 539.6) * (791.6 - 791.6) + (539.6 + 539.6) * (791.6 - 604.2) + (539.6 + 729.6) * (604.2 - 604.2)\right) * 0.5 * 0.00694$

# 615 South Main Street, Blackstone, Nottoway County, Virginia, United States, 23824

Gross Living Area: 3626 sq. ft

## Level 2

Space	Area (sq. ft)	Calculation <small>Coordinate Polygon Area Algorithm using inches</small>
PATIO (Non-living area)	196	$-\left((880.6 + 880.6) * (604.2 - 791.6) + (880.6 + 729.6) * (791.6 - 791.6) + (729.6 + 729.6) * (791.6 - 604.2) + (729.6 + 880.6) * (604.2 - 604.2)\right) * 0.5 * 0.00694$
PORCH (Non-living area)	598	$-\left((135.5 + 135.5) * (593.2 - 795.6) + (135.5 + 539.6) * (795.6 - 795.6) + (539.6 + 539.6) * (795.6 - 791.6) + (539.6 + 632) * (791.6 - 791.6) + (632 + 632) * (791.6 - 912) + (632 + 47.7) * (912 - 912) + (47.7 + 47.7) * (912 - 593.2) + (47.7 + 135.5) * (593.2 - 593.2)\right) * 0.5 * 0.00694$

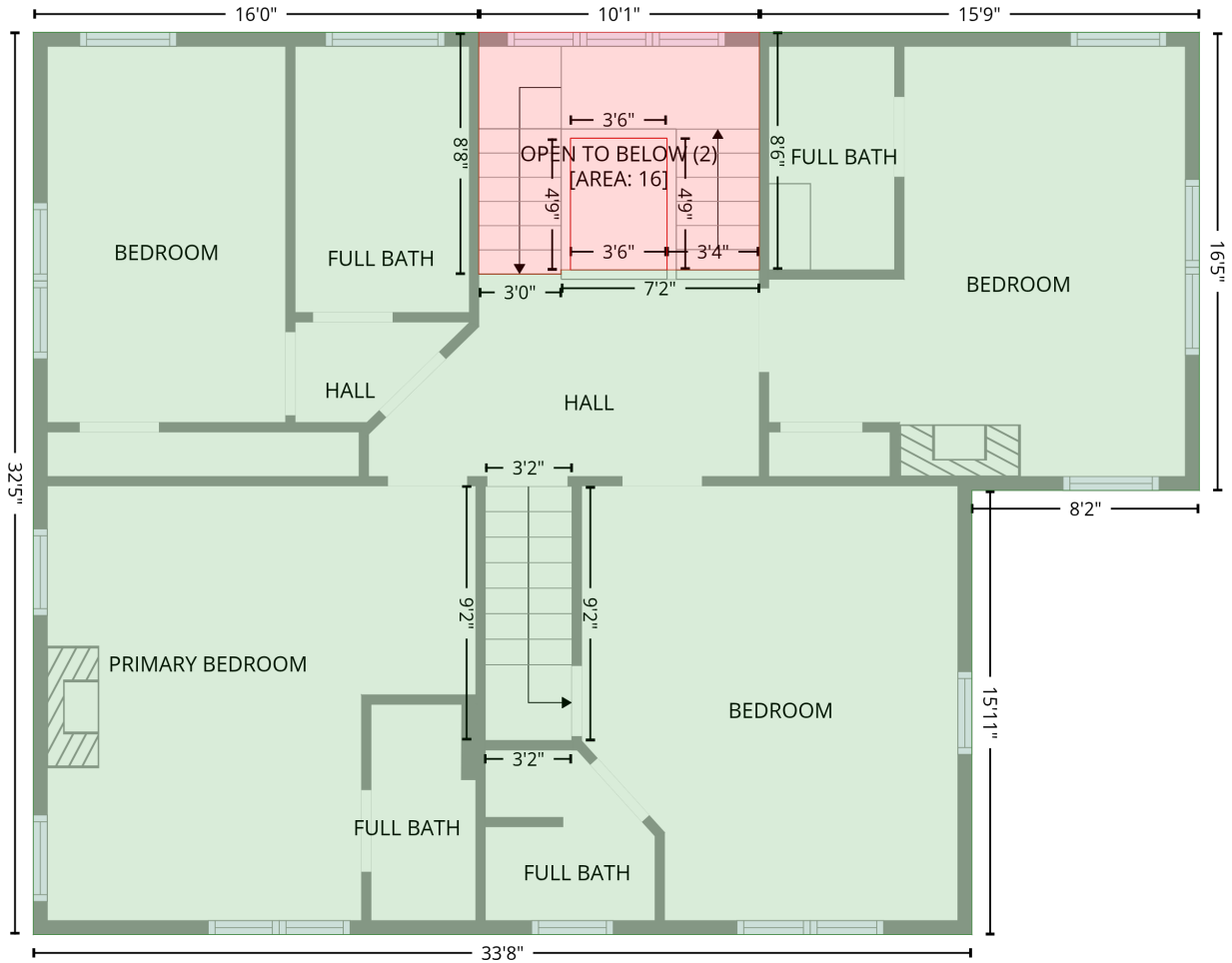
# 615 South Main Street, Blackstone, Nottoway County, Virginia, United States, 23824

Gross Living Area: 3626 sq. ft

## Level 3

2nd floor  
[AREA: 1139]

STAIRWELL (1)  
[AREA: 70]



Space	Area (sq. ft)	Calculation <small>Coordinate Polygon Area Algorithm using inches</small>
2nd floor (Living area)	1139	$-\left((327.3 + 327.3) * (406.9 - 511) + (327.3 + 362.8) * (511 - 511) + (362.8 + 362.6) * (511 - 509.2) + (362.6 + 448.1) * (509.2 - 509.2) + (448.1 + 448.1) * (509.2 - 406.9) + (448.1 + 637.6) * (406.9 - 406.9) + (637.6 + 637.6) * (406.9 - 604.2) + (637.6 + 539.6) * (604.2 - 604.2) + (539.6 + 539.6) * (604.2 - 795.6) + (539.6 + 135.5) * (795.6 - 795.6) + (135.5 + 135.5) * (795.6 - 406.9) + (135.5 + 327.3) * (406.9 - 406.9)\right) * 0.5 * 0.00694$
STAIRWELL (Non-living area)	70	$-\left((448.1 + 448.1) * (406.9 - 509.2) + (448.1 + 408.3) * (509.2 - 509.2) + (408.3 + 408.3) * (509.2 - 452.5) + (408.3 + 366.8) * (452.5 - 452.5) + (366.8 + 366.8) * (452.5 - 509.2) + (366.8 + 362.6) * (509.2 - 509.2) + (362.6 + 362.8) * (509.2 - 511) + (362.8 + 327.3) * (511 - 511) + (327.3 + 327.3) * (511 - 406.9) + (327.3 + 448.1) * (406.9 - 406.9)\right) * 0.5 * 0.00694$
OPEN TO BELOW (Non-living area)	16	$-\left((408.3 + 408.3) * (452.5 - 509.2) + (408.3 + 366.8) * (509.2 - 509.2) + (366.8 + 366.8) * (509.2 - 452.5) + (366.8 + 408.3) * (452.5 - 452.5)\right) * 0.5 * 0.00694$



# 615 South Main Street, Blackstone, Nottoway County, Virginia, United States, 23824

Gross Living Area: 3626 sq. ft

## Level 4

Space	Area (sq. ft)	Calculation <small>Coordinate Polygon Area Algorithm using inches</small>
STORAGE (Non-living area)	118	$-\left((637.6 + 637.6) * (484.1 - 545.8) + (637.6 + 533.6) * (545.8 - 545.8) + (533.6 + 533.6) * (545.8 - 574.7) + (533.6 + 539.6) * (574.7 - 580.7) + (539.6 + 539.6) * (580.7 - 598.2) + (539.6 + 442.3) * (598.2 - 598.2) + (442.3 + 442.3) * (598.2 - 506.1) + (442.3 + 438.3) * (506.1 - 506.1) + (438.3 + 438.3) * (506.1 - 494.4) + (438.3 + 436.3) * (494.4 - 488.4) + (436.3 + 436.3) * (488.4 - 484.1) + (436.3 + 637.6) * (484.1 - 484.1)\right) * 0.5 * 0.00694$