

**Total Area: 2210 sq. ft**

1st Floor: 2210 sq. ft

Excluded: Patio 952 sq. ft, Porch 264 sq. ft, Garage 508 sq. ft, Walls: 155 sq. ft

## Property summary



# Home data report

## 16238 W Sandia Park Dr, Surprise, AZ, US



### Room dimensions

Floor 1

Total: 2210 sqft

Excluded: 1724 sqft

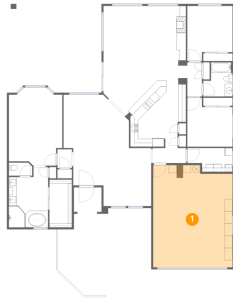
#		Dimensions	sqft	Counted as living area
1	Garage	20'3" x 26'1"	527 sq. ft	No
2	Family Room	21'0" x 13'10"	292 sq. ft	Yes
3	Foyer	7'9" x 9'6"	73 sq. ft	Yes
4	Bedroom	11'6" x 12'6"	144 sq. ft	Yes
5	Hall	8'6" x 3'10"	33 sq. ft	Yes
6	Living Room	12'2" x 14'10"	180 sq. ft	Yes
7	Hall	3'8" x 4'9"	18 sq. ft	Yes
8	Bath	5'11" x 3'4"	20 sq. ft	Yes
9	Breakfast Nook	21'4" x 14'1"	301 sq. ft	Yes
10	Patio	45'11" x 32'3"	1480 sq. ft	No
11	Laundry	11'6" x 6'0"	70 sq. ft	Yes

Home data report

16238 W Sandia Park Dr, Surprise, AZ, US

#		Dimensions	sqft	Counted as living area
12	Dining Area	16'8" x 13'7"	226 sq. ft	Yes
13	Bath	7'6" x 8'8"	65 sq. ft	Yes
14	Kitchen	14'2" x 17'2"	244 sq. ft	Yes
15	Bedroom	11'6" x 14'0"	162 sq. ft	Yes
16	Porch	12'4" x 27'7"	339 sq. ft	No
17	Hall	3'9" x 8'8"	32 sq. ft	Yes
18	Primary Bath	10'0" x 15'4"	153 sq. ft	Yes
19	W.I.C.	5'9" x 12'2"	70 sq. ft	Yes
20	Primary Bedroom	13'7" x 19'11"	271 sq. ft	Yes

## 1 Floor 1 - Garage



Dimensions: 20'3" x 26'1"  
Area: 527 sq. ft  
Counted as living area: No

Heated: No  
Finished: No  
Enclosed: Yes  
Contiguous: Yes  
Permitted: Yes  
Wet space: No  
Addition: No  
Conversion: No

## 2 Floor 1 - Family Room



Dimensions: 21'0" x 13'10"  
Area: 292 sq. ft  
Counted as living area: Yes

Heated: Yes  
Finished: Yes  
Enclosed: Yes  
Contiguous: Yes  
Permitted: Yes  
Wet space: No  
Addition: No  
Conversion: No

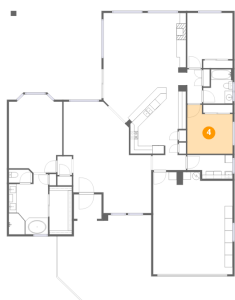
### 3 Floor 1 - Foyer



Dimensions: 7'9" x 9'6"  
Area: 73 sq. ft  
Counted as living area: Yes

Heated: Yes  
Finished: Yes  
Enclosed: Yes  
Contiguous: Yes  
Permitted: Yes  
Wet space: No  
Addition: No  
Conversion: No

### 4 Floor 1 - Bedroom



Dimensions: 11'6" x 12'6"  
Area: 144 sq. ft  
Counted as living area: Yes

Heated: Yes  
Finished: Yes  
Enclosed: Yes  
Contiguous: Yes  
Permitted: Yes  
Wet space: No  
Addition: No  
Conversion: No

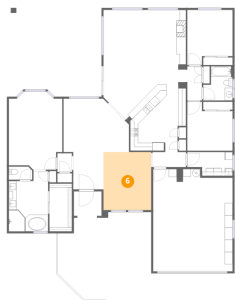
### 5 Floor 1 - Hall



Dimensions: 8'6" x 3'10"  
Area: 33 sq. ft  
Counted as living area: Yes

Heated: Yes  
Finished: Yes  
Enclosed: Yes  
Contiguous: Yes  
Permitted: Yes  
Wet space: No  
Addition: No  
Conversion: No

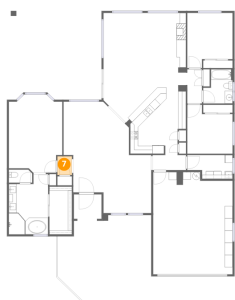
## 6 Floor 1 - Living Room



Dimensions: 12'2" x 14'10"  
Area: 180 sq. ft  
Counted as living area: Yes

Heated: Yes  
Finished: Yes  
Enclosed: Yes  
Contiguous: Yes  
Permitted: Yes  
Wet space: No  
Addition: No  
Conversion: No

## 7 Floor 1 - Hall



Dimensions: 3'8" x 4'9"  
Area: 18 sq. ft  
Counted as living area: Yes

Heated: Yes  
Finished: Yes  
Enclosed: Yes  
Contiguous: Yes  
Permitted: Yes  
Wet space: No  
Addition: No  
Conversion: No

## 8 Floor 1 - Bath

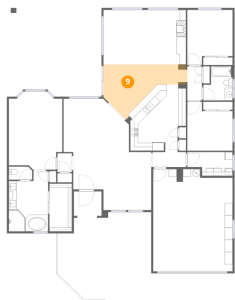


Dimensions: 5'11" x 3'4"  
Area: 20 sq. ft  
Counted as living area: Yes

Heated: Yes  
Finished: Yes  
Enclosed: Yes  
Contiguous: Yes  
Permitted: Yes  
Wet space: Yes  
Addition: No  
Conversion: No

### 9 Floor 1 - Breakfast Nook

---



Dimensions: 21'4" x 14'1"  
Area: 301 sq. ft  
Counted as living area: Yes

Heated: Yes  
Finished: Yes  
Enclosed: Yes  
Contiguous: Yes  
Permitted: Yes  
Wet space: No  
Addition: No  
Conversion: No

### 10 Floor 1 - Patio

---



Dimensions: 45'11" x 32'3"  
Area: 1480 sq. ft  
Counted as living area: No

Heated: No  
Finished: No  
Enclosed: No  
Contiguous: Yes  
Permitted: Yes  
Wet space: No  
Addition: No  
Conversion: No

### 11 Floor 1 - Laundry

---



Dimensions: 11'6" x 6'0"  
Area: 70 sq. ft  
Counted as living area: Yes

Heated: Yes  
Finished: Yes  
Enclosed: Yes  
Contiguous: Yes  
Permitted: Yes  
Wet space: No  
Addition: No  
Conversion: No

## 12 Floor 1 - Dining Area



Dimensions: 16'8" x 13'7"  
Area: 226 sq. ft  
Counted as living area: Yes

Heated: Yes  
Finished: Yes  
Enclosed: Yes  
Contiguous: Yes  
Permitted: Yes  
Wet space: No  
Addition: No  
Conversion: No

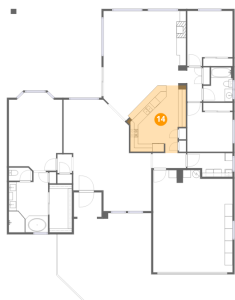
## 13 Floor 1 - Bath



Dimensions: 7'6" x 8'8"  
Area: 65 sq. ft  
Counted as living area: Yes

Heated: Yes  
Finished: Yes  
Enclosed: Yes  
Contiguous: Yes  
Permitted: Yes  
Wet space: Yes  
Addition: No  
Conversion: No

## 14 Floor 1 - Kitchen



Dimensions: 14'2" x 17'2"  
Area: 244 sq. ft  
Counted as living area: Yes

Heated: Yes  
Finished: Yes  
Enclosed: Yes  
Contiguous: Yes  
Permitted: Yes  
Wet space: No  
Addition: No  
Conversion: No

### 15 Floor 1 - Bedroom



Dimensions: 11'6" x 14'0"  
Area: 162 sq. ft  
Counted as living area: Yes

Heated: Yes  
Finished: Yes  
Enclosed: Yes  
Contiguous: Yes  
Permitted: Yes  
Wet space: No  
Addition: No  
Conversion: No

### 16 Floor 1 - Porch



Dimensions: 12'4" x 27'7"  
Area: 339 sq. ft  
Counted as living area: No

Heated: No  
Finished: No  
Enclosed: No  
Contiguous: Yes  
Permitted: Yes  
Wet space: No  
Addition: No  
Conversion: No

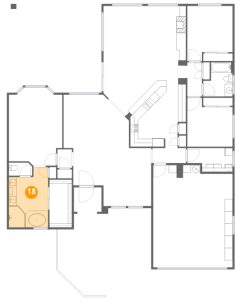
### 17 Floor 1 - Hall



Dimensions: 3'9" x 8'8"  
Area: 32 sq. ft  
Counted as living area: Yes

Heated: Yes  
Finished: Yes  
Enclosed: Yes  
Contiguous: Yes  
Permitted: Yes  
Wet space: No  
Addition: No  
Conversion: No

### 18 Floor 1 - Primary Bath



Dimensions: 10'0" x 15'4"  
Area: 153 sq. ft  
Counted as living area: Yes

Heated: Yes  
Finished: Yes  
Enclosed: Yes  
Contiguous: Yes  
Permitted: Yes  
Wet space: Yes  
Addition: No  
Conversion: No

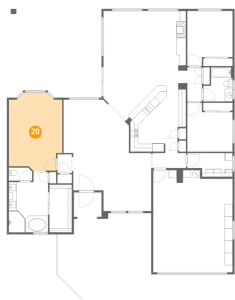
### 19 Floor 1 - W.I.C.



Dimensions: 5'9" x 12'2"  
Area: 70 sq. ft  
Counted as living area: Yes

Heated: Yes  
Finished: Yes  
Enclosed: Yes  
Contiguous: Yes  
Permitted: Yes  
Wet space: No  
Addition: No  
Conversion: No

### 20 Floor 1 - Primary Bedroom



Dimensions: 13'7" x 19'11"  
Area: 271 sq. ft  
Counted as living area: Yes

Heated: Yes  
Finished: Yes  
Enclosed: Yes  
Contiguous: Yes  
Permitted: Yes  
Wet space: No  
Addition: No  
Conversion: No