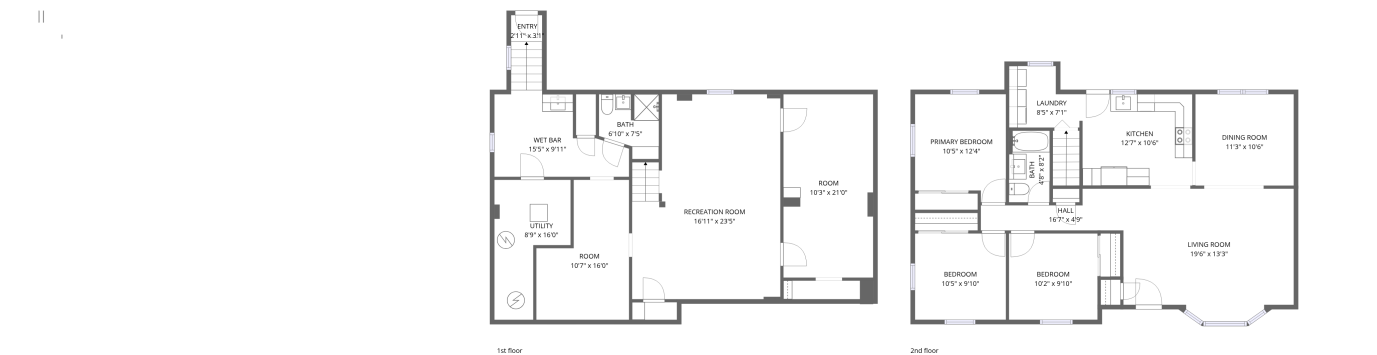


Home data report

484 Centerton Road, Upper Deerfield Township, Bridgeton,
Cumberland County, New Jersey, United States, 08302




Total Area: 2075 sq. ft

1st Floor: 981 sq. ft, 2nd Floor: 1094 sq. ft

Excluded: Utility 103 sq. ft, Undefined 11 sq. ft, Embeddedwindow 15 sq. ft, Walls: 153 sq. ft

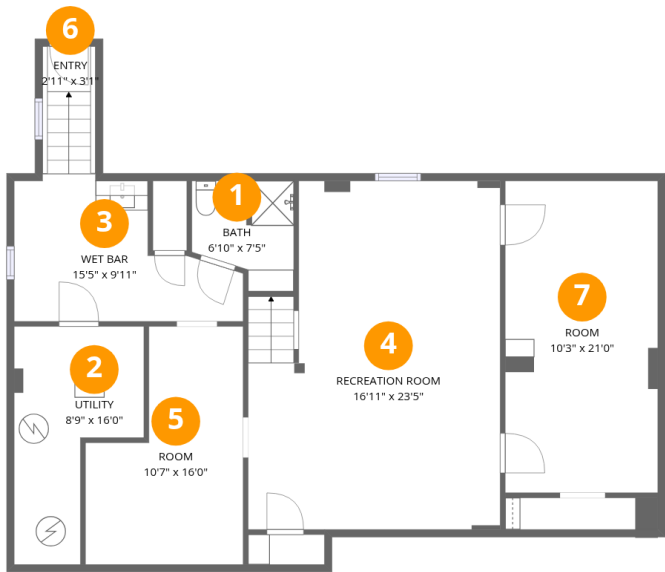
Property summary

 2 Floors

 3 Bedrooms

 2 Bathrooms

484 Centerton Road, Upper Deerfield Township, Bridgeton,
Cumberland County, New Jersey, United States, 08302



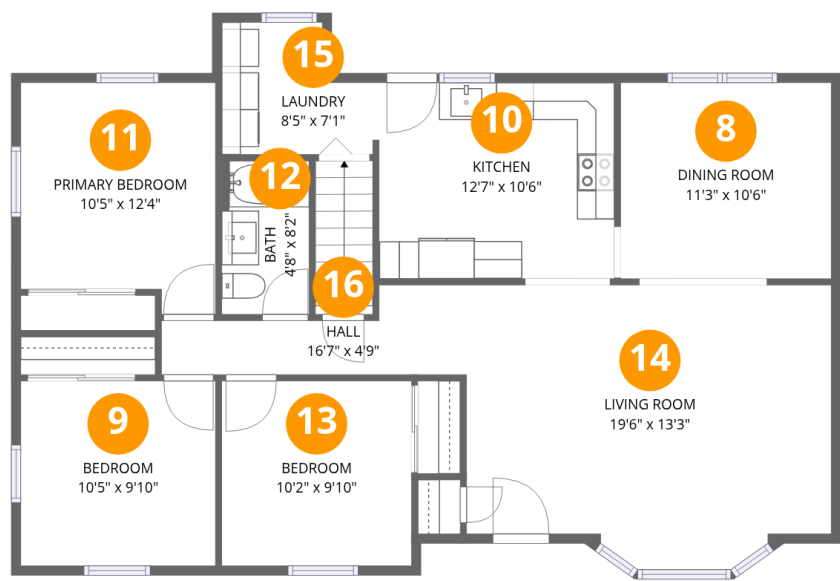
Room dimensions

Floor 1 Total:981sqft Excluded: 114sqft

#		Dimensions	sqft	Counted as living area
1	Bath	6'10" x 7'5"	42 sq. ft	Yes
2	Utility	8'9" x 16'0"	103 sq. ft	No
3	Wet Bar	15'5" x 9'11"	132 sq. ft	Yes
4	Recreation Room	16'11" x 23'5"	370 sq. ft	Yes
5	Room	10'7" x 16'0"	136 sq. ft	Yes
6	Entry	2'11" x 3'1"	11 sq. ft	Yes
7	Room	10'3" x 21'0"	215 sq. ft	Yes

Home data report

484 Centerton Road, Upper Deerfield Township, Bridgeton,
Cumberland County, New Jersey, United States, 08302

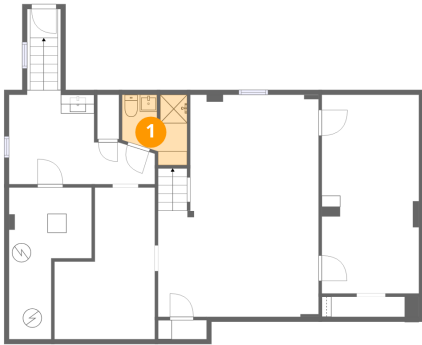


Room dimensions

Floor 2 Total:1094sqft Excluded: 15sqft

#		Dimensions	sqft	Counted as living area
8	Dining Room	11'3" x 10'6"	118 sq. ft	Yes
9	Bedroom	10'5" x 9'10"	103 sq. ft	Yes
10	Kitchen	12'7" x 10'6"	131 sq. ft	Yes
11	Primary Bedroom	10'5" x 12'4"	118 sq. ft	Yes
12	Bath	4'8" x 8'2"	38 sq. ft	Yes
13	Bedroom	10'2" x 9'10"	100 sq. ft	Yes
14	Living Room	19'6" x 13'3"	257 sq. ft	Yes
15	Laundry	8'5" x 7'1"	49 sq. ft	Yes
16	Hall	16'7" x 4'9"	57 sq. ft	Yes

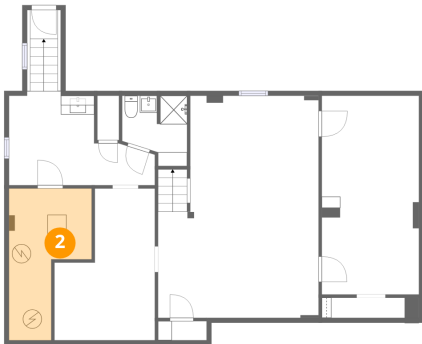
1 Floor 1 - Bath



Dimensions: 6'10" x 7'5"
Area: 42 sq. ft
Counted as living area: Yes

Heated: Yes
Finished: Yes
Enclosed: Yes
Contiguous: Yes
Permitted: Yes
Wet space: Yes
Addition: No
Conversion: No

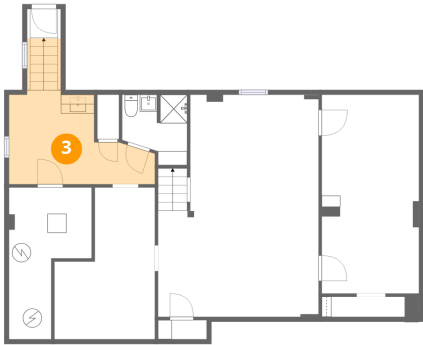
2 Floor 1 - Utility



Dimensions: 8'9" x 16'0"
Area: 103 sq. ft
Counted as living area: No

Heated: Yes
Finished: No
Enclosed: Yes
Contiguous: Yes
Permitted: Yes
Wet space: No
Addition: No
Conversion: No

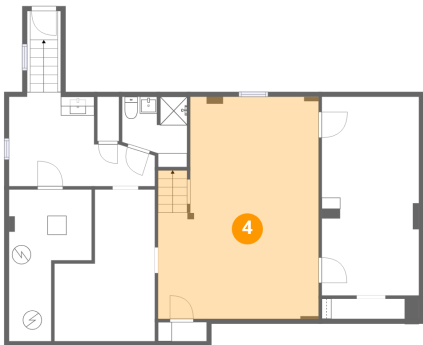
3 Floor 1 - Wet Bar



Dimensions: 15'5" x 9'11"
Area: 132 sq. ft
Counted as living area: Yes

Heated: Yes
Finished: Yes
Enclosed: Yes
Contiguous: Yes
Permitted: Yes
Wet space: No
Addition: No
Conversion: No

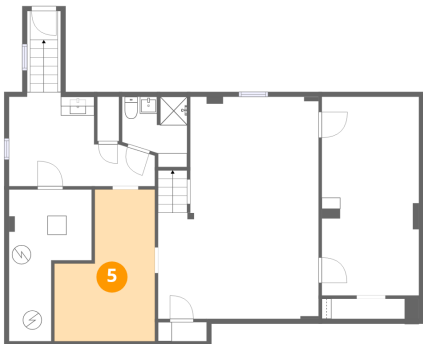
4 Floor 1 - Recreation Room



Dimensions: 16'11" x 23'5"
Area: 370 sq. ft
Counted as living area: Yes

Heated: Yes
Finished: Yes
Enclosed: Yes
Contiguous: Yes
Permitted: Yes
Wet space: No
Addition: No
Conversion: No

5 Floor 1 - Room

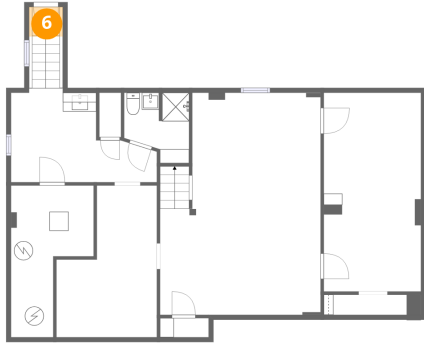


Dimensions: 10'7" x 16'0"
Area: 136 sq. ft
Counted as living area: Yes

Heated: Yes
Finished: Yes
Enclosed: Yes
Contiguous: Yes
Permitted: Yes
Wet space: No
Addition: No
Conversion: No

484 Centerton Road, Upper Deerfield Township, Bridgeton,
Cumberland County, New Jersey, United States, 08302

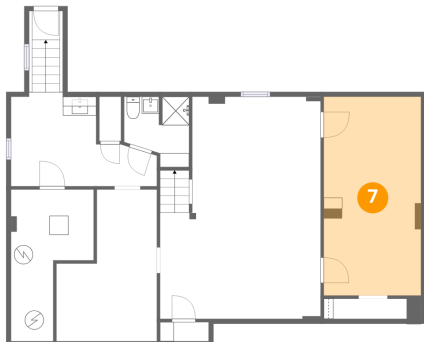
6 Floor 1 - Entry



Dimensions: 2'11" x 3'1"
Area: 11 sq. ft
Counted as living area: Yes

Heated: Yes
Finished: Yes
Enclosed: Yes
Contiguous: Yes
Permitted: Yes
Wet space: No
Addition: No
Conversion: No

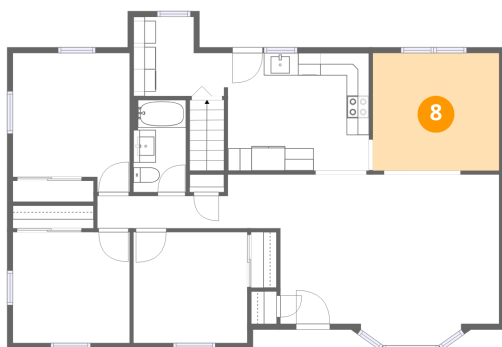
7 Floor 1 - Room



Dimensions: 10'3" x 21'0"
Area: 215 sq. ft
Counted as living area: Yes

Heated: Yes
Finished: Yes
Enclosed: Yes
Contiguous: Yes
Permitted: Yes
Wet space: No
Addition: No
Conversion: No

8 Floor 2 - Dining Room

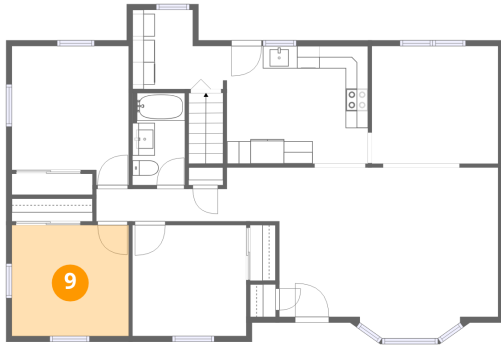


Dimensions: 11'3" x 10'6"
Area: 118 sq. ft
Counted as living area: Yes

Heated: Yes
Finished: Yes
Enclosed: Yes
Contiguous: Yes
Permitted: Yes
Wet space: No
Addition: No
Conversion: No

484 Centerton Road, Upper Deerfield Township, Bridgeton,
Cumberland County, New Jersey, United States, 08302

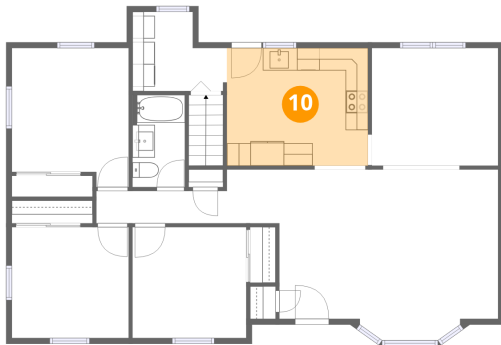
9 Floor 2 - Bedroom



Dimensions: 10'5" x 9'10"
Area: 103 sq. ft
Counted as living area: Yes

Heated: Yes
Finished: Yes
Enclosed: Yes
Contiguous: Yes
Permitted: Yes
Wet space: No
Addition: No
Conversion: No

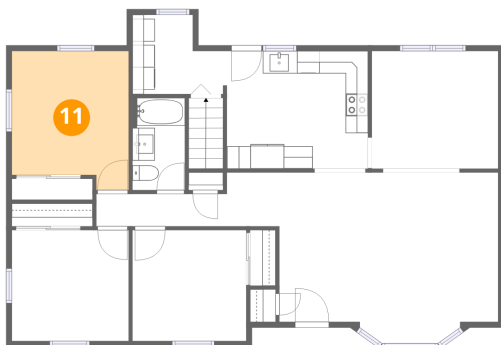
10 Floor 2 - Kitchen



Dimensions: 12'7" x 10'6"
Area: 131 sq. ft
Counted as living area: Yes

Heated: Yes
Finished: Yes
Enclosed: Yes
Contiguous: Yes
Permitted: Yes
Wet space: No
Addition: No
Conversion: No

11 Floor 2 - Primary Bedroom

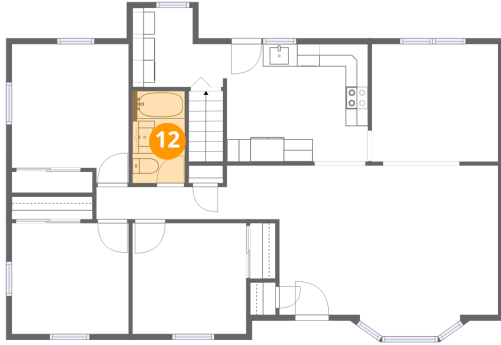


Dimensions: 10'5" x 12'4"
Area: 118 sq. ft
Counted as living area: Yes

Heated: Yes
Finished: Yes
Enclosed: Yes
Contiguous: Yes
Permitted: Yes
Wet space: No
Addition: No
Conversion: No

484 Centerton Road, Upper Deerfield Township, Bridgeton,
Cumberland County, New Jersey, United States, 08302

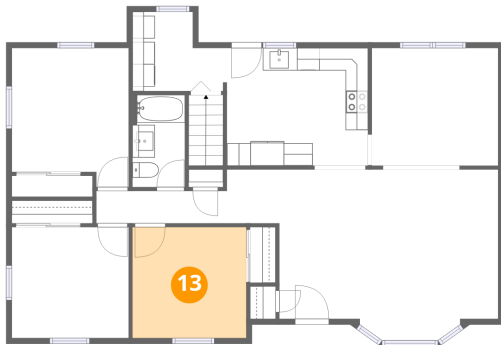
12 Floor 2 - Bath



Dimensions: 4'8" x 8'2"
Area: 38 sq. ft
Counted as living area: Yes

Heated: Yes
Finished: Yes
Enclosed: Yes
Contiguous: Yes
Permitted: Yes
Wet space: Yes
Addition: No
Conversion: No

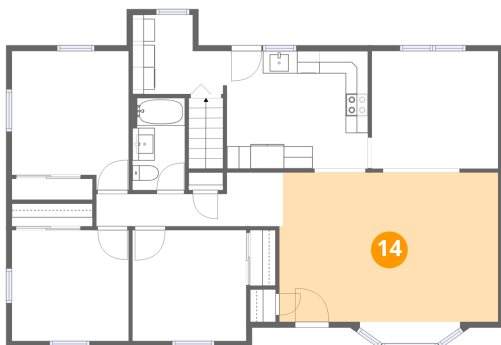
13 Floor 2 - Bedroom



Dimensions: 10'2" x 9'10"
Area: 100 sq. ft
Counted as living area: Yes

Heated: Yes
Finished: Yes
Enclosed: Yes
Contiguous: Yes
Permitted: Yes
Wet space: No
Addition: No
Conversion: No

14 Floor 2 - Living Room

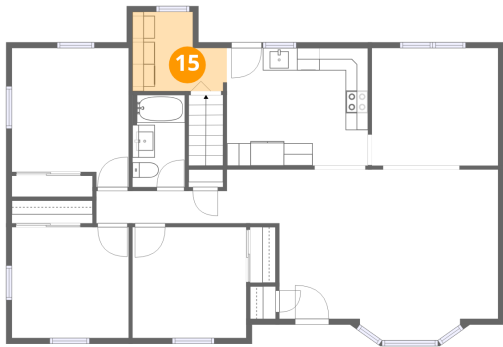


Dimensions: 19'6" x 13'3"
Area: 257 sq. ft
Counted as living area: Yes

Heated: Yes
Finished: Yes
Enclosed: Yes
Contiguous: Yes
Permitted: Yes
Wet space: No
Addition: No
Conversion: No

484 Centerton Road, Upper Deerfield Township, Bridgeton,
Cumberland County, New Jersey, United States, 08302

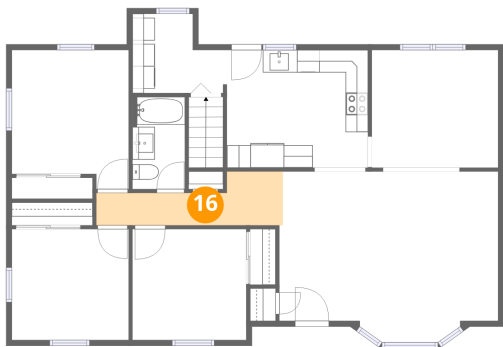
15 Floor 2 - Laundry



Dimensions: 8'5" x 7'1"
Area: 49 sq. ft
Counted as living area: Yes

Heated: Yes
Finished: Yes
Enclosed: Yes
Contiguous: Yes
Permitted: Yes
Wet space: No
Addition: No
Conversion: No

16 Floor 2 - Hall



Dimensions: 16'7" x 4'9"
Area: 57 sq. ft
Counted as living area: Yes

Heated: Yes
Finished: Yes
Enclosed: Yes
Contiguous: Yes
Permitted: Yes
Wet space: No
Addition: No
Conversion: No