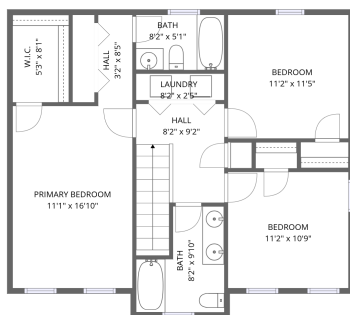


Home data report

5916 Carolina Trail, Bryant Heights, Hollins, Roanoke, Roanoke County, Virginia, United States, 24019



2nd floor



1st floor

Total Area: 1640 sq. ft

1st Floor: 836 sq. ft, 2nd Floor: 804 sq. ft

Excluded: Garage 455 sq. ft, Utility 29 sq. ft, Deck 461 sq. ft, Porch 23 sq. ft, Walls: 169 sq. ft

Property summary



Home data report

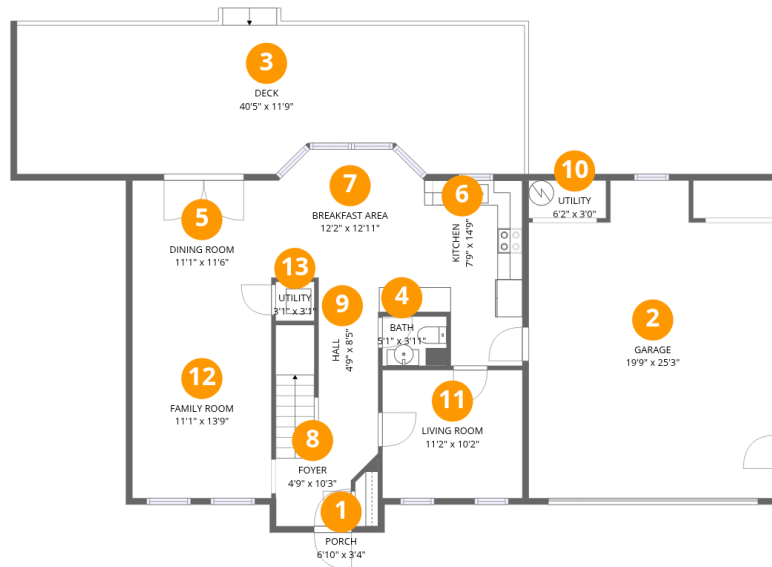
5916 Carolina Trail, Bryant Heights, Hollins, Roanoke, Roanoke County, Virginia, United States, 24019

 **1**
Half baths

 **1**
Garages

Home data report

5916 Carolina Trail, Bryant Heights, Hollins, Roanoke, Roanoke County, Virginia, United States, 24019



Room dimensions

Floor 1

Total:836sqft Excluded: 968sqft

#		Dimensions	sqft	Counted as living area
1	Porch	6'10" x 3'4"	23 sq. ft	No
2	Garage	19'9" x 25'3"	455 sq. ft	No
3	Deck	40'5" x 11'9"	461 sq. ft	No
4	Bath	5'1" x 3'11"	20 sq. ft	Yes
5	Dining Room	11'1" x 11'6"	128 sq. ft	Yes
6	Kitchen	7'9" x 14'9"	106 sq. ft	Yes
7	Breakfast Area	12'2" x 12'11"	133 sq. ft	Yes
8	Foyer	4'9" x 10'3"	91 sq. ft	Yes
9	Hall	4'9" x 8'5"	39 sq. ft	Yes
10	Utility	6'2" x 3'0"	19 sq. ft	No
11	Living Room	11'2" x 10'2"	114 sq. ft	Yes

Home data report

5916 Carolina Trail, Bryant Heights, Hollins, Roanoke, Roanoke County, Virginia, United States, 24019

#		Dimensions	sqft	Counted as living area
12	Family Room	11'1" x 13'9"	153 sq. ft	Yes
13	Utility	3'1" x 3'1"	10 sq. ft	No

Home data report

5916 Carolina Trail, Bryant Heights, Hollins, Roanoke, Roanoke County, Virginia, United States, 24019



Room dimensions

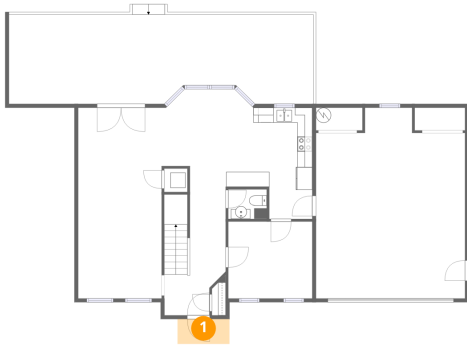
Floor 2

Total:804sqft Excluded: 0sqft

#		Dimensions	sqft	Counted as living area
14	Bedroom	11'2" x 11'5"	128 sq. ft	Yes
15	Primary Bedroom	11'1" x 16'10"	187 sq. ft	Yes
16	Bath	8'2" x 9'10"	63 sq. ft	Yes
17	Bedroom	11'2" x 10'9"	120 sq. ft	Yes
18	Bath	8'2" x 5'1"	42 sq. ft	Yes
19	W.I.C.	5'3" x 8'1"	42 sq. ft	Yes
20	Hall	3'2" x 8'5"	27 sq. ft	Yes
21	Hall	8'2" x 9'2"	90 sq. ft	Yes
22	Laundry	8'2" x 2'5"	20 sq. ft	Yes

5916 Carolina Trail, Bryant Heights, Hollins, Roanoke, Roanoke County, Virginia, United States, 24019

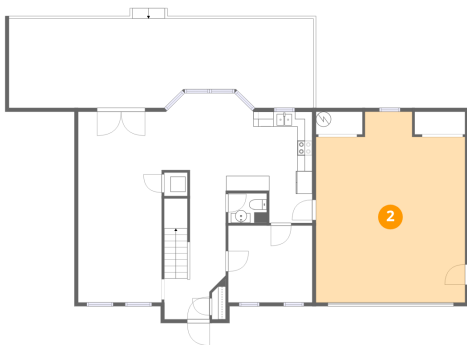
1 Floor 1 - Porch



Dimensions: 6'10" x 3'4"
Area: 23 sq. ft
Counted as living area: No

Heated: No
Finished: No
Enclosed: No
Contiguous: Yes
Permitted: Yes
Wet space: No
Addition: No
Conversion: No

2 Floor 1 - Garage

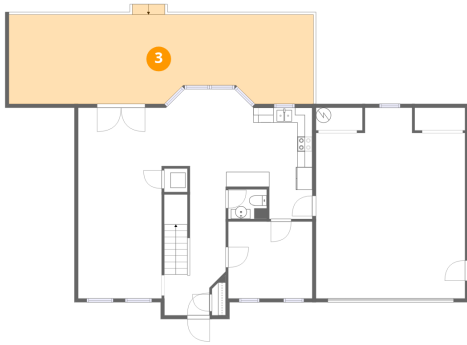


Dimensions: 19'9" x 25'3"
Area: 455 sq. ft
Counted as living area: No

Heated: No
Finished: No
Enclosed: Yes
Contiguous: Yes
Permitted: Yes
Wet space: No
Addition: No
Conversion: No

5916 Carolina Trail, Bryant Heights, Hollins, Roanoke, Roanoke County, Virginia, United States, 24019

3 Floor 1 - Deck



Dimensions: 40'5" x 11'9"
Area: 461 sq. ft
Counted as living area: No

Heated: No
Finished: No
Enclosed: No
Contiguous: Yes
Permitted: Yes
Wet space: No
Addition: No
Conversion: No

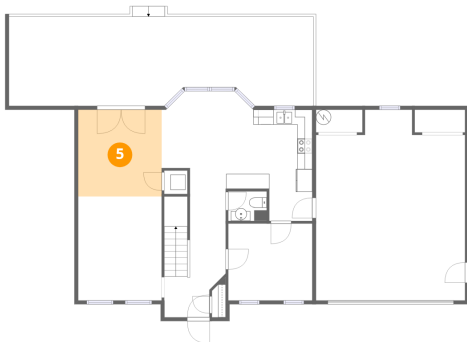
4 Floor 1 - Bath



Dimensions: 5'1" x 3'11"
Area: 20 sq. ft
Counted as living area: Yes

Heated: Yes
Finished: Yes
Enclosed: Yes
Contiguous: Yes
Permitted: Yes
Wet space: Yes
Addition: No
Conversion: No

5 Floor 1 - Dining Room

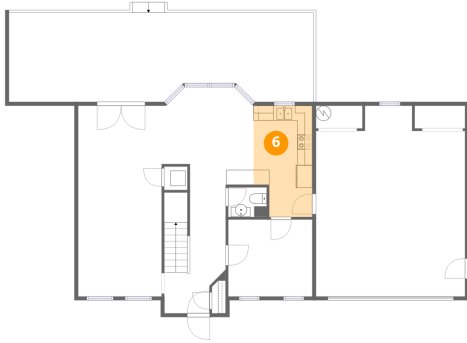


Dimensions: 11'1" x 11'6"
Area: 128 sq. ft
Counted as living area: Yes

Heated: Yes
Finished: Yes
Enclosed: Yes
Contiguous: Yes
Permitted: Yes
Wet space: No
Addition: No
Conversion: No

5916 Carolina Trail, Bryant Heights, Hollins, Roanoke, Roanoke County, Virginia, United States, 24019

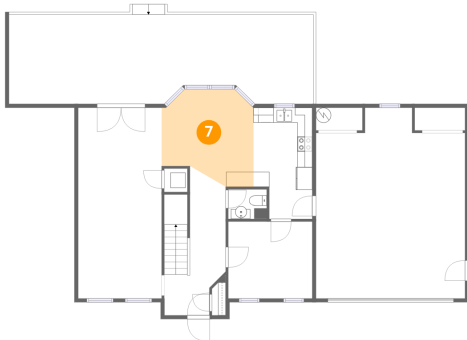
6 Floor 1 - Kitchen



Dimensions: 7'9" x 14'9"
Area: 106 sq. ft
Counted as living area: Yes

Heated: Yes
Finished: Yes
Enclosed: Yes
Contiguous: Yes
Permitted: Yes
Wet space: No
Addition: No
Conversion: No

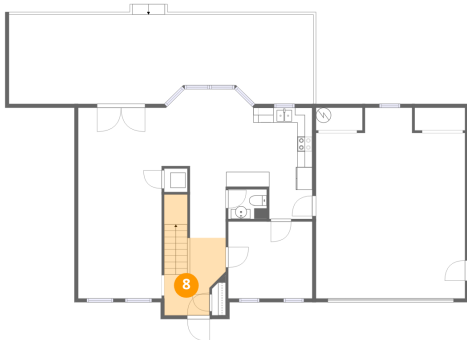
7 Floor 1 - Breakfast Area



Dimensions: 12'2" x 12'11"
Area: 133 sq. ft
Counted as living area: Yes

Heated: Yes
Finished: Yes
Enclosed: Yes
Contiguous: Yes
Permitted: Yes
Wet space: No
Addition: No
Conversion: No

8 Floor 1 - Foyer

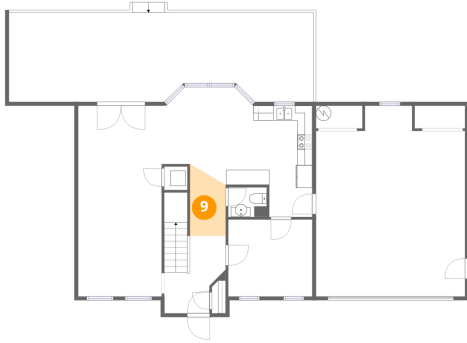


Dimensions: 4'9" x 10'3"
Area: 91 sq. ft
Counted as living area: Yes

Heated: Yes
Finished: Yes
Enclosed: Yes
Contiguous: Yes
Permitted: Yes
Wet space: No
Addition: No
Conversion: No

5916 Carolina Trail, Bryant Heights, Hollins, Roanoke, Roanoke County, Virginia, United States, 24019

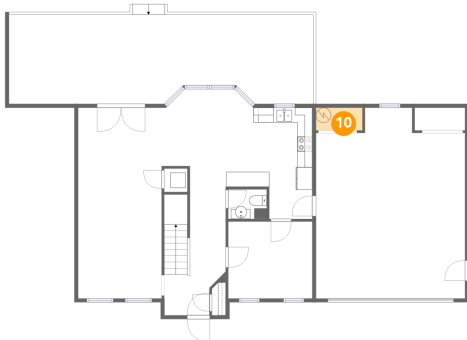
9 Floor 1 - Hall



Dimensions: 4'9" x 8'5"
Area: 39 sq. ft
Counted as living area: Yes

Heated: Yes
Finished: Yes
Enclosed: Yes
Contiguous: Yes
Permitted: Yes
Wet space: No
Addition: No
Conversion: No

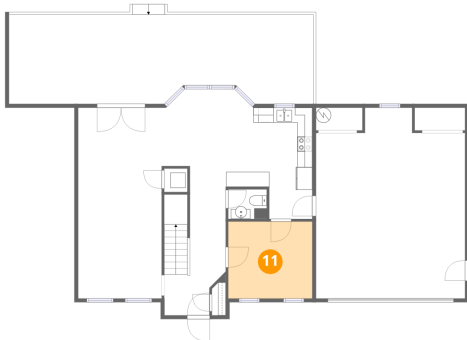
10 Floor 1 - Utility



Dimensions: 6'2" x 3'0"
Area: 19 sq. ft
Counted as living area: No

Heated: Yes
Finished: No
Enclosed: Yes
Contiguous: Yes
Permitted: Yes
Wet space: No
Addition: No
Conversion: No

11 Floor 1 - Living Room

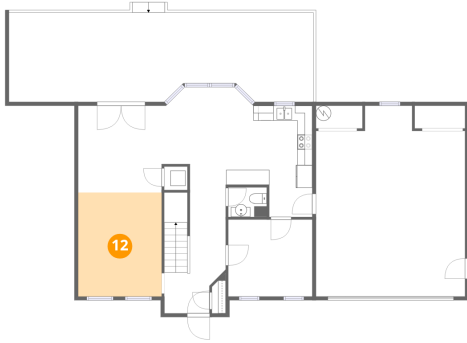


Dimensions: 11'2" x 10'2"
Area: 114 sq. ft
Counted as living area: Yes

Heated: Yes
Finished: Yes
Enclosed: Yes
Contiguous: Yes
Permitted: Yes
Wet space: No
Addition: No
Conversion: No

5916 Carolina Trail, Bryant Heights, Hollins, Roanoke, Roanoke County, Virginia, United States, 24019

12 Floor 1 - Family Room



Dimensions: 11'1" x 13'9"
Area: 153 sq. ft
Counted as living area: Yes

Heated: Yes
Finished: Yes
Enclosed: Yes
Contiguous: Yes
Permitted: Yes
Wet space: No
Addition: No
Conversion: No

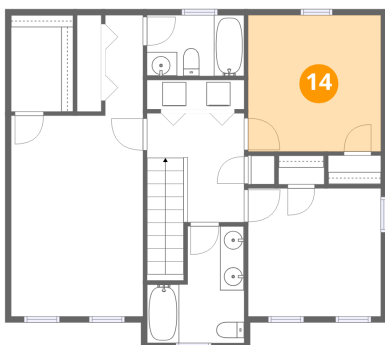
13 Floor 1 - Utility



Dimensions: 3'1" x 3'1"
Area: 10 sq. ft
Counted as living area: No

Heated: Yes
Finished: No
Enclosed: Yes
Contiguous: Yes
Permitted: Yes
Wet space: No
Addition: No
Conversion: No

14 Floor 2 - Bedroom

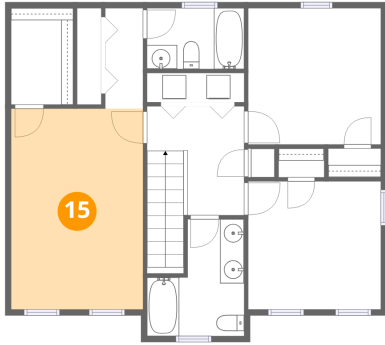


Dimensions: 11'2" x 11'5"
Area: 128 sq. ft
Counted as living area: Yes

Heated: Yes
Finished: Yes
Enclosed: Yes
Contiguous: Yes
Permitted: Yes
Wet space: No
Addition: No
Conversion: No

5916 Carolina Trail, Bryant Heights, Hollins, Roanoke, Roanoke County, Virginia, United States, 24019

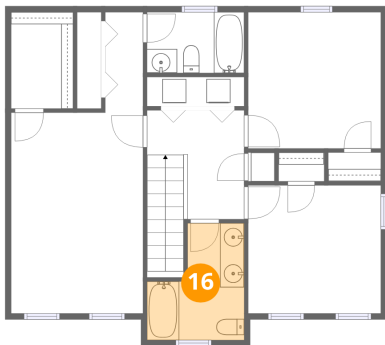
15 Floor 2 - Primary Bedroom



Dimensions: 11'1" x 16'10"
Area: 187 sq. ft
Counted as living area: Yes

Heated: Yes
Finished: Yes
Enclosed: Yes
Contiguous: Yes
Permitted: Yes
Wet space: No
Addition: No
Conversion: No

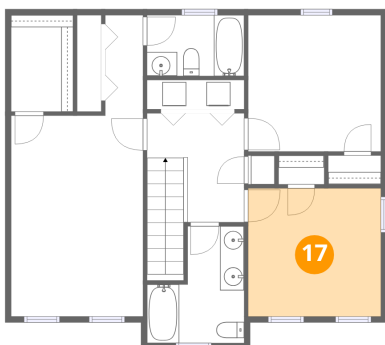
16 Floor 2 - Bath



Dimensions: 8'2" x 9'10"
Area: 63 sq. ft
Counted as living area: Yes

Heated: Yes
Finished: Yes
Enclosed: Yes
Contiguous: Yes
Permitted: Yes
Wet space: Yes
Addition: No
Conversion: No

17 Floor 2 - Bedroom

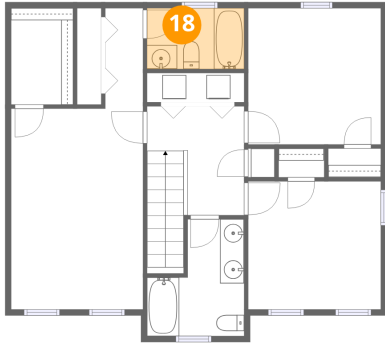


Dimensions: 11'2" x 10'9"
Area: 120 sq. ft
Counted as living area: Yes

Heated: Yes
Finished: Yes
Enclosed: Yes
Contiguous: Yes
Permitted: Yes
Wet space: No
Addition: No
Conversion: No

5916 Carolina Trail, Bryant Heights, Hollins, Roanoke, Roanoke County, Virginia, United States, 24019

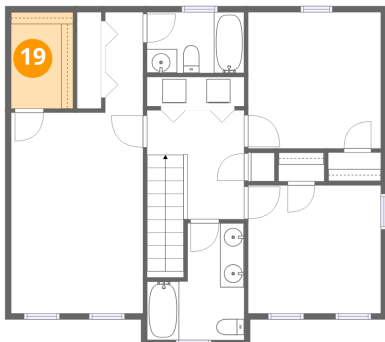
18 Floor 2 - Bath



Dimensions: 8'2" x 5'1"
Area: 42 sq. ft
Counted as living area: Yes

Heated: Yes
Finished: Yes
Enclosed: Yes
Contiguous: Yes
Permitted: Yes
Wet space: Yes
Addition: No
Conversion: No

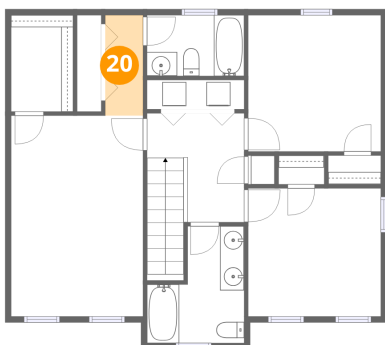
19 Floor 2 - W.I.C.



Dimensions: 5'3" x 8'1"
Area: 42 sq. ft
Counted as living area: Yes

Heated: Yes
Finished: Yes
Enclosed: Yes
Contiguous: Yes
Permitted: Yes
Wet space: No
Addition: No
Conversion: No

20 Floor 2 - Hall

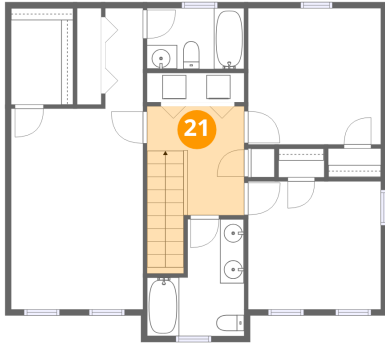


Dimensions: 3'2" x 8'5"
Area: 27 sq. ft
Counted as living area: Yes

Heated: Yes
Finished: Yes
Enclosed: Yes
Contiguous: Yes
Permitted: Yes
Wet space: No
Addition: No
Conversion: No

5916 Carolina Trail, Bryant Heights, Hollins, Roanoke, Roanoke County, Virginia, United States, 24019

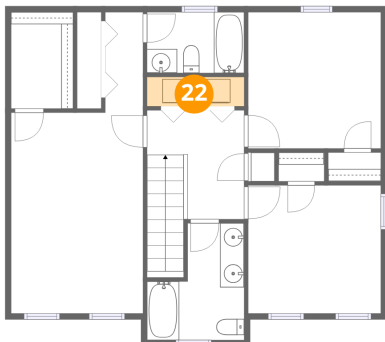
21 Floor 2 - Hall



Dimensions: 8'2" x 9'2"
Area: 90 sq. ft
Counted as living area: Yes

Heated: Yes
Finished: Yes
Enclosed: Yes
Contiguous: Yes
Permitted: Yes
Wet space: No
Addition: No
Conversion: No

22 Floor 2 - Laundry



Dimensions: 8'2" x 2'5"
Area: 20 sq. ft
Counted as living area: Yes

Heated: Yes
Finished: Yes
Enclosed: Yes
Contiguous: Yes
Permitted: Yes
Wet space: No
Addition: No
Conversion: No