

## Home data report

**4235 Berkeley Place Drive, Cave Spring, Roanoke, Roanoke County, Virginia, United States, 24018**



**Total Area: 3048 sq. ft**

Basement: 813 sq. ft, 1st Floor: 990 sq. ft, 2nd Floor: 1245 sq. ft

Excluded: Utility 129 sq. ft, Porch 69 sq. ft, Balcony 131 sq. ft, Garage 565 sq. ft, Walls: 267 sq. ft

## Property summary



Home data report

**4235 Berkeley Place Drive, Cave Spring, Roanoke, Roanoke  
County, Virginia, United States, 24018**



**1**  
Half baths



**1**  
Garages

Home data report

4235 Berkeley Place Drive, Cave Spring, Roanoke, Roanoke County, Virginia, United States, 24018



### Room dimensions

Floor 1 Below grade

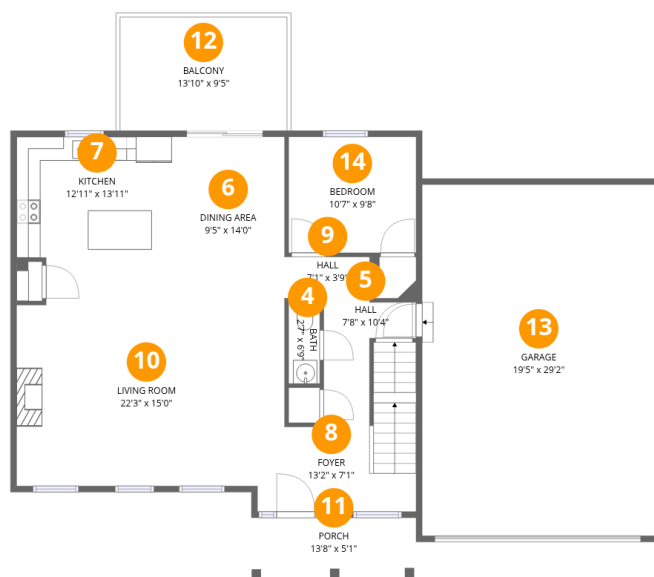
Total:813sqft

Excluded: 129sqft

#		Dimensions	sqft	Counted as living area
1	Bath	8'6" x 4'11"	42 sq. ft	Yes
2	Recreation Room	32'9" x 30'0"	981 sq. ft	Yes
3	Utility	8'6" x 15'7"	132 sq. ft	No

Home data report

4235 Berkeley Place Drive, Cave Spring, Roanoke, Roanoke County, Virginia, United States, 24018



## Room dimensions

Floor 2

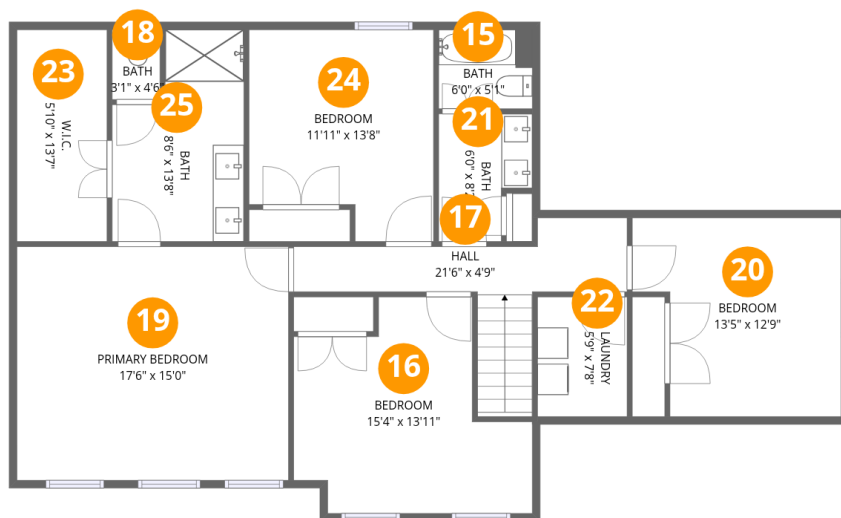
Total:990sqft

Excluded: 765sqft

#		Dimensions	sqft	Counted as living area
4	Bath	2'7" x 6'9"	17 sq. ft	Yes
5	Hall	7'8" x 10'4"	79 sq. ft	Yes
6	Dining Area	9'5" x 14'0"	131 sq. ft	Yes
7	Kitchen	12'11" x 13'11"	180 sq. ft	Yes
8	Foyer	13'2" x 7'1"	93 sq. ft	Yes
9	Hall	7'1" x 3'9"	27 sq. ft	Yes
10	Living Room	22'3" x 15'0"	335 sq. ft	Yes
11	Porch	13'8" x 5'1"	69 sq. ft	No
12	Balcony	13'10" x 9'5"	130 sq. ft	No
13	Garage	19'5" x 29'2"	565 sq. ft	No
14	Bedroom	10'7" x 9'8"	102 sq. ft	Yes

Home data report

4235 Berkeley Place Drive, Cave Spring, Roanoke, Roanoke County, Virginia, United States, 24018



## Room dimensions

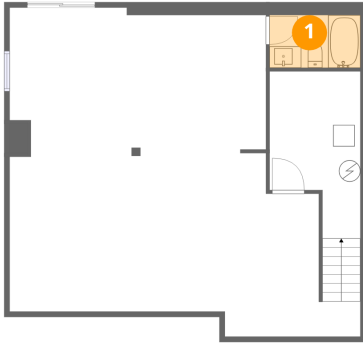
Floor 3

Total:1245sqft Excluded: 0sqft

#		Dimensions	sqft	Counted as living area
15	Bath	6'0" x 5'1"	31 sq. ft	Yes
16	Bedroom	15'4" x 13'11"	214 sq. ft	Yes
17	Hall	21'6" x 4'9"	102 sq. ft	Yes
18	Bath	3'1" x 4'6"	14 sq. ft	Yes
19	Primary Bedroom	17'6" x 15'0"	263 sq. ft	Yes
20	Bedroom	13'5" x 12'9"	172 sq. ft	Yes
21	Bath	6'0" x 8'2"	49 sq. ft	Yes
22	Laundry	5'9" x 7'8"	44 sq. ft	Yes
23	W.I.C.	5'10" x 13'7"	79 sq. ft	Yes
24	Bedroom	11'11" x 13'8"	162 sq. ft	Yes
25	Bath	8'6" x 13'8"	116 sq. ft	Yes

4235 Berkeley Place Drive, Cave Spring, Roanoke, Roanoke County, Virginia, United States, 24018

1 Floor 1 - Bath



Dimensions: 8'6" x 4'11"  
Area: 42 sq. ft  
Counted as living area: No

Heated: Yes  
Finished: Yes  
Enclosed: Yes  
Contiguous: No  
Permitted: Yes  
Wet space: Yes  
Addition: No  
Conversion: No

2 Floor 1 - Recreation Room

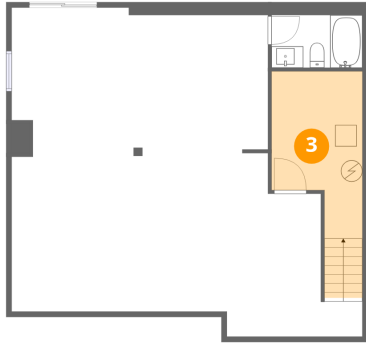


Dimensions: 32'9" x 30'0"  
Area: 981 sq. ft  
Counted as living area: No

Heated: Yes  
Finished: Yes  
Enclosed: Yes  
Contiguous: No  
Permitted: Yes  
Wet space: No  
Addition: No  
Conversion: No

4235 Berkeley Place Drive, Cave Spring, Roanoke, Roanoke County, Virginia, United States, 24018

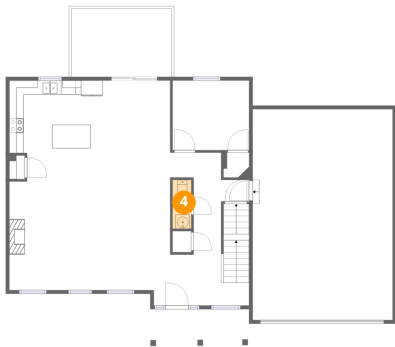
**3** Floor 1 - Utility



Dimensions: 8'6" x 15'7"  
Area: 132 sq. ft  
Counted as living area: No

Heated: Yes  
Finished: No  
Enclosed: Yes  
Contiguous: Yes  
Permitted: Yes  
Wet space: No  
Addition: No  
Conversion: No

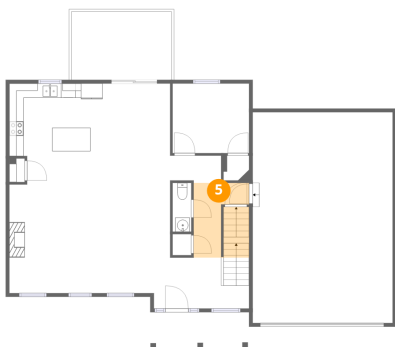
**4** Floor 2 - Bath



Dimensions: 2'7" x 6'9"  
Area: 17 sq. ft  
Counted as living area: Yes

Heated: Yes  
Finished: Yes  
Enclosed: Yes  
Contiguous: Yes  
Permitted: Yes  
Wet space: Yes  
Addition: No  
Conversion: No

**5** Floor 2 - Hall

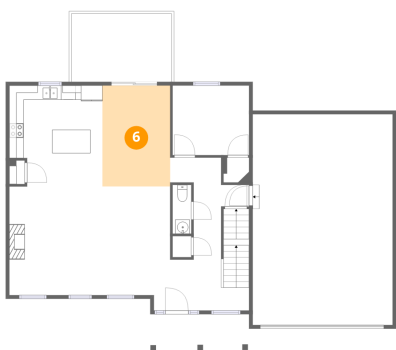


Dimensions: 7'8" x 10'4"  
Area: 79 sq. ft  
Counted as living area: Yes

Heated: Yes  
Finished: Yes  
Enclosed: Yes  
Contiguous: Yes  
Permitted: Yes  
Wet space: No  
Addition: No  
Conversion: No

4235 Berkeley Place Drive, Cave Spring, Roanoke, Roanoke County, Virginia, United States, 24018

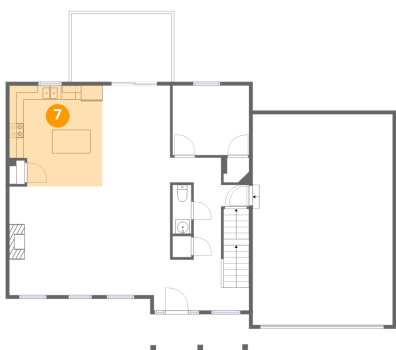
**6** Floor 2 - Dining Area



Dimensions: 9'5" x 14'0"  
Area: 131 sq. ft  
Counted as living area: Yes

Heated: Yes  
Finished: Yes  
Enclosed: Yes  
Contiguous: Yes  
Permitted: Yes  
Wet space: No  
Addition: No  
Conversion: No

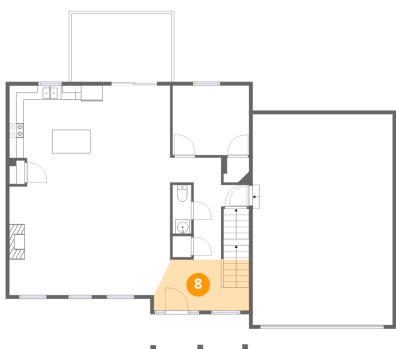
**7** Floor 2 - Kitchen



Dimensions: 12'11" x 13'11"  
Area: 180 sq. ft  
Counted as living area: Yes

Heated: Yes  
Finished: Yes  
Enclosed: Yes  
Contiguous: Yes  
Permitted: Yes  
Wet space: No  
Addition: No  
Conversion: No

**8** Floor 2 - Foyer

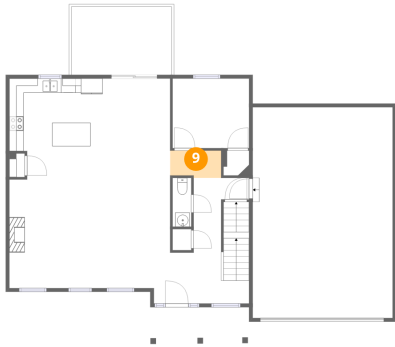


Dimensions: 13'2" x 7'1"  
Area: 93 sq. ft  
Counted as living area: Yes

Heated: Yes  
Finished: Yes  
Enclosed: Yes  
Contiguous: Yes  
Permitted: Yes  
Wet space: No  
Addition: No  
Conversion: No

4235 Berkeley Place Drive, Cave Spring, Roanoke, Roanoke County, Virginia, United States, 24018

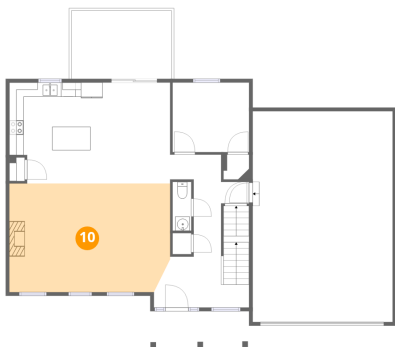
9 Floor 2 - Hall



Dimensions: 7'1" x 3'9"  
Area: 27 sq. ft  
Counted as living area: Yes

Heated: Yes  
Finished: Yes  
Enclosed: Yes  
Contiguous: Yes  
Permitted: Yes  
Wet space: No  
Addition: No  
Conversion: No

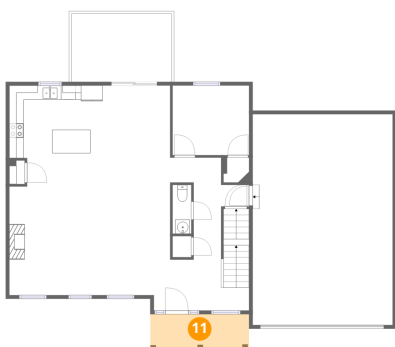
10 Floor 2 - Living Room



Dimensions: 22'3" x 15'0"  
Area: 335 sq. ft  
Counted as living area: Yes

Heated: Yes  
Finished: Yes  
Enclosed: Yes  
Contiguous: Yes  
Permitted: Yes  
Wet space: No  
Addition: No  
Conversion: No

11 Floor 2 - Porch

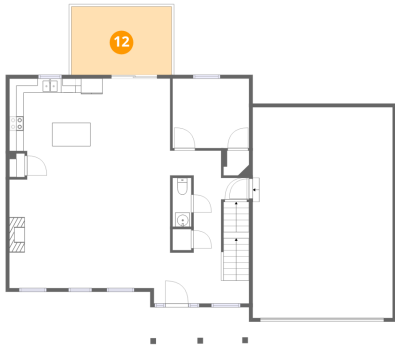


Dimensions: 13'8" x 5'1"  
Area: 69 sq. ft  
Counted as living area: No

Heated: No  
Finished: No  
Enclosed: No  
Contiguous: Yes  
Permitted: Yes  
Wet space: No  
Addition: No  
Conversion: No

4235 Berkeley Place Drive, Cave Spring, Roanoke, Roanoke County, Virginia, United States, 24018

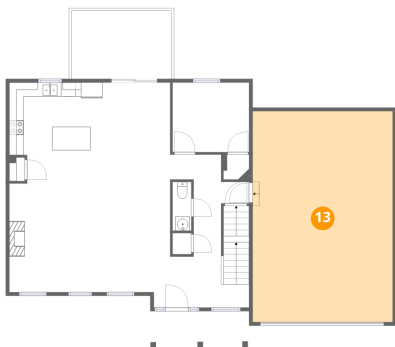
**12** Floor 2 - Balcony



Dimensions: 13'10" x 9'5"  
Area: 130 sq. ft  
Counted as living area: No

Heated: No  
Finished: No  
Enclosed: No  
Contiguous: Yes  
Permitted: Yes  
Wet space: No  
Addition: No  
Conversion: No

**13** Floor 2 - Garage



Dimensions: 19'5" x 29'2"  
Area: 565 sq. ft  
Counted as living area: No

Heated: No  
Finished: No  
Enclosed: Yes  
Contiguous: Yes  
Permitted: Yes  
Wet space: No  
Addition: No  
Conversion: No

**14** Floor 2 - Bedroom



Dimensions: 10'7" x 9'8"  
Area: 102 sq. ft  
Counted as living area: Yes

Heated: Yes  
Finished: Yes  
Enclosed: Yes  
Contiguous: Yes  
Permitted: Yes  
Wet space: No  
Addition: No  
Conversion: No

4235 Berkeley Place Drive, Cave Spring, Roanoke, Roanoke County, Virginia, United States, 24018

**15** Floor 3 - Bath



Dimensions: 6'0" x 5'1"  
Area: 31 sq. ft  
Counted as living area: Yes

Heated: Yes  
Finished: Yes  
Enclosed: Yes  
Contiguous: Yes  
Permitted: Yes  
Wet space: Yes  
Addition: No  
Conversion: No

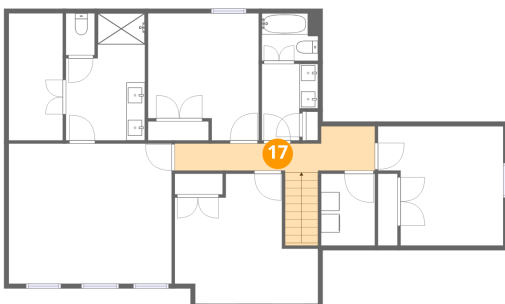
**16** Floor 3 - Bedroom



Dimensions: 15'4" x 13'11"  
Area: 214 sq. ft  
Counted as living area: Yes

Heated: Yes  
Finished: Yes  
Enclosed: Yes  
Contiguous: Yes  
Permitted: Yes  
Wet space: No  
Addition: No  
Conversion: No

**17** Floor 3 - Hall



Dimensions: 21'6" x 4'9"  
Area: 102 sq. ft  
Counted as living area: Yes

Heated: Yes  
Finished: Yes  
Enclosed: Yes  
Contiguous: Yes  
Permitted: Yes  
Wet space: No  
Addition: No  
Conversion: No

4235 Berkeley Place Drive, Cave Spring, Roanoke, Roanoke County, Virginia, United States, 24018

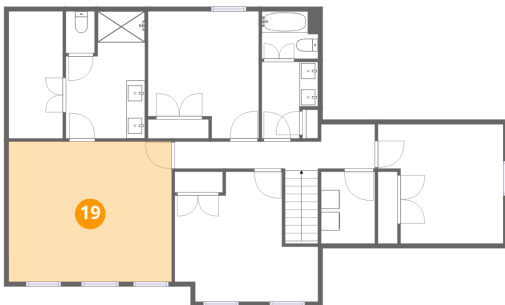
**18** Floor 3 - Bath



Dimensions: 3'1" x 4'6"  
Area: 14 sq. ft  
Counted as living area: Yes

Heated: Yes  
Finished: Yes  
Enclosed: Yes  
Contiguous: Yes  
Permitted: Yes  
Wet space: Yes  
Addition: No  
Conversion: No

**19** Floor 3 - Primary Bedroom



Dimensions: 17'6" x 15'0"  
Area: 263 sq. ft  
Counted as living area: Yes

Heated: Yes  
Finished: Yes  
Enclosed: Yes  
Contiguous: Yes  
Permitted: Yes  
Wet space: No  
Addition: No  
Conversion: No

**20** Floor 3 - Bedroom



Dimensions: 13'5" x 12'9"  
Area: 172 sq. ft  
Counted as living area: Yes

Heated: Yes  
Finished: Yes  
Enclosed: Yes  
Contiguous: Yes  
Permitted: Yes  
Wet space: No  
Addition: No  
Conversion: No

4235 Berkeley Place Drive, Cave Spring, Roanoke, Roanoke County, Virginia, United States, 24018

**21** Floor 3 - Bath



Dimensions: 6'0" x 8'2"  
Area: 49 sq. ft  
Counted as living area: Yes

Heated: Yes  
Finished: Yes  
Enclosed: Yes  
Contiguous: Yes  
Permitted: Yes  
Wet space: Yes  
Addition: No  
Conversion: No

**22** Floor 3 - Laundry



Dimensions: 5'9" x 7'8"  
Area: 44 sq. ft  
Counted as living area: Yes

Heated: Yes  
Finished: Yes  
Enclosed: Yes  
Contiguous: Yes  
Permitted: Yes  
Wet space: No  
Addition: No  
Conversion: No

**23** Floor 3 - W.I.C.



Dimensions: 5'10" x 13'7"  
Area: 79 sq. ft  
Counted as living area: Yes

Heated: Yes  
Finished: Yes  
Enclosed: Yes  
Contiguous: Yes  
Permitted: Yes  
Wet space: No  
Addition: No  
Conversion: No

4235 Berkeley Place Drive, Cave Spring, Roanoke, Roanoke County, Virginia, United States, 24018

**24** Floor 3 - Bedroom



Dimensions: 11'11" x 13'8"  
Area: 162 sq. ft  
Counted as living area: Yes

Heated: Yes  
Finished: Yes  
Enclosed: Yes  
Contiguous: Yes  
Permitted: Yes  
Wet space: No  
Addition: No  
Conversion: No

**25** Floor 3 - Bath



Dimensions: 8'6" x 13'8"  
Area: 116 sq. ft  
Counted as living area: Yes

Heated: Yes  
Finished: Yes  
Enclosed: Yes  
Contiguous: Yes  
Permitted: Yes  
Wet space: Yes  
Addition: No  
Conversion: No