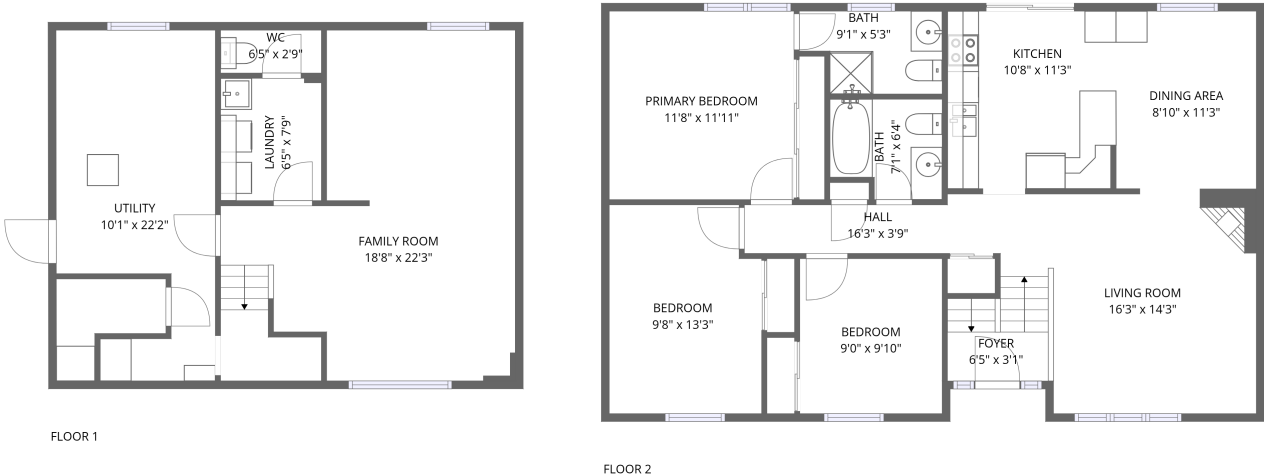


Home report

1610 Schouten Drive, Queenswood Heights, Orléans, Ontario, Canada, K1E 2J4




Total Area: 1453 sq. ft

Below Ground: 422 sq. ft, Floor 2: 1031 sq. ft

Excluded: Utility 193 sq. ft, Undefined 31 sq. ft, Walls: 122 sq. ft

Property summary

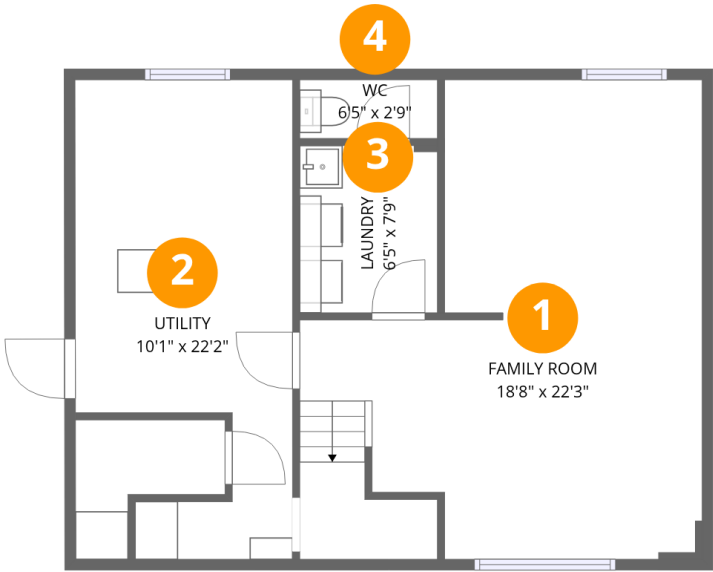
 2 Floors

 3 Bedrooms

 2 Bathrooms

Home report

1610 Schouten Drive, Queenswood Heights, Orléans, Ontario,  
Canada, K1E 2J4



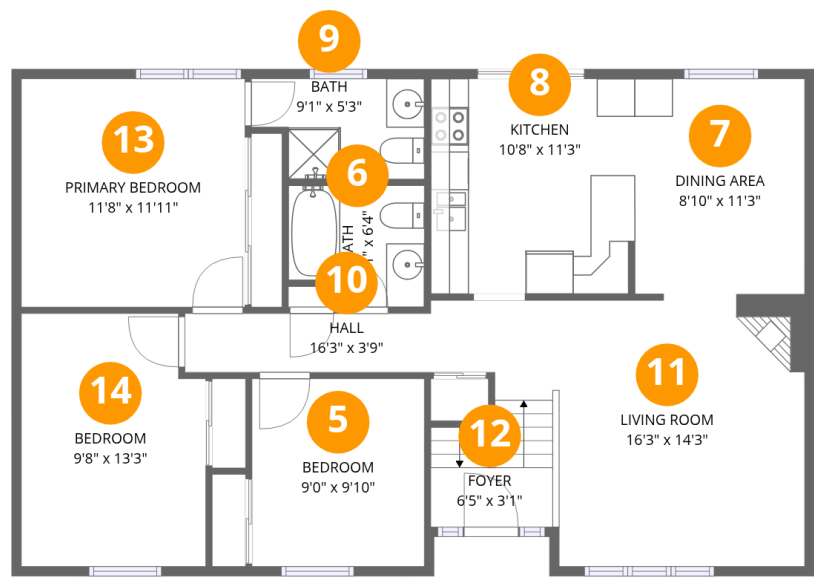
Room dimensions

Floor 1 Below ground Total:422sqft    Excluded: 224sqft

#		Max Dimensions	sqft	Included
1	Family Room	18'8" x 22'3"	336 sq. ft	Yes
2	Utility	10'1" x 22'2"	187 sq. ft	No
3	Laundry	6'5" x 7'9"	49 sq. ft	Yes
4	WC	6'5" x 2'9"	17 sq. ft	Yes

Home report

1610 Schouten Drive, Queenswood Heights, Orléans, Ontario,  
Canada, K1E 2J4



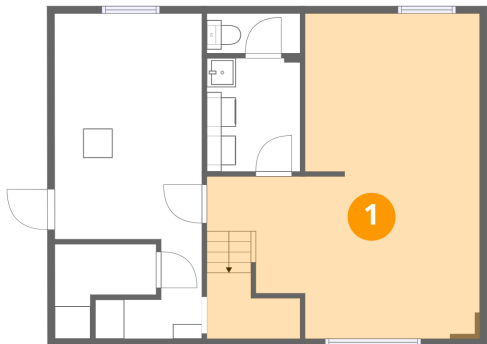
Room dimensions

Floor 2 Total:1031sqft   Excluded: 0sqft

#		Max Dimensions	sqft	Included
5	Bedroom	9'0" x 9'10"	89 sq. ft	Yes
6	Bath	7'1" x 6'4"	41 sq. ft	Yes
7	Dining Area	8'10" x 11'3"	100 sq. ft	Yes
8	Kitchen	10'8" x 11'3"	119 sq. ft	Yes
9	Bath	9'1" x 5'3"	42 sq. ft	Yes
10	Hall	16'3" x 3'9"	52 sq. ft	Yes
11	Living Room	16'3" x 14'3"	197 sq. ft	Yes
12	Foyer	6'5" x 3'1"	42 sq. ft	Yes
13	Primary Bedroom	11'8" x 11'11"	140 sq. ft	Yes
14	Bedroom	9'8" x 13'3"	123 sq. ft	Yes

1610 Schouten Drive, Queenswood Heights, Orléans, Ontario,  
Canada, K1E 2J4

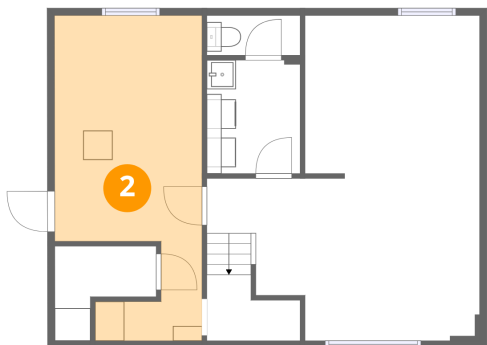
1 Floor 1 - Family Room



Max Dimensions: 18'8" x 22'3"  
Calculated Area: 336 sq. ft  
Included: Yes

Heated: Yes  
Finished: Yes  
Enclosed: Yes  
Contiguous: Yes  
Permitted: Yes  
Wet space: No  
Addition: No  
Conversion: No

2 Floor 1 - Utility



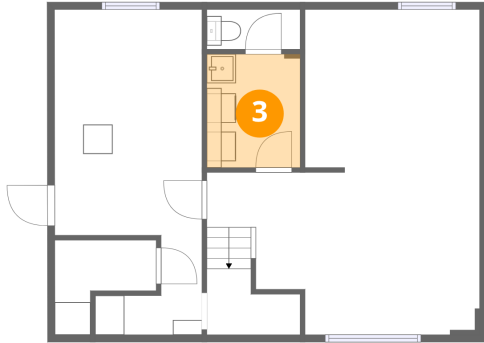
Max Dimensions: 10'1" x 22'2"  
Calculated Area: 187 sq. ft  
Included: No

Heated: Yes  
Finished: No  
Enclosed: Yes  
Contiguous: Yes  
Permitted: Yes  
Wet space: No  
Addition: No  
Conversion: No

## Home report

1610 Schouten Drive, Queenswood Heights, Orléans, Ontario,  
Canada, K1E 2J4

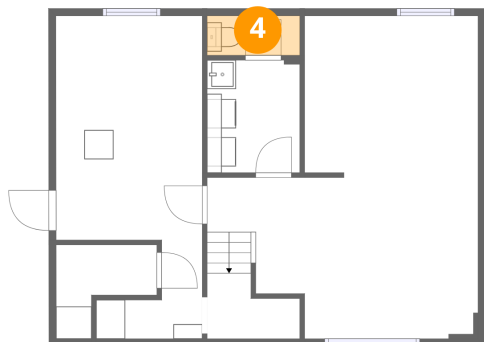
### 3 Floor 1 - Laundry



Max Dimensions: 6'5" x 7'9"  
Calculated Area: 49 sq. ft  
Included: Yes

Heated: Yes  
Finished: Yes  
Enclosed: Yes  
Contiguous: Yes  
Permitted: Yes  
Wet space: No  
Addition: No  
Conversion: No

### 4 Floor 1 - WC



Max Dimensions: 6'5" x 2'9"  
Calculated Area: 17 sq. ft  
Included: Yes

Heated: Yes  
Finished: Yes  
Enclosed: Yes  
Contiguous: Yes  
Permitted: Yes  
Wet space: Yes  
Addition: No  
Conversion: No

### 5 Floor 2 - Bedroom

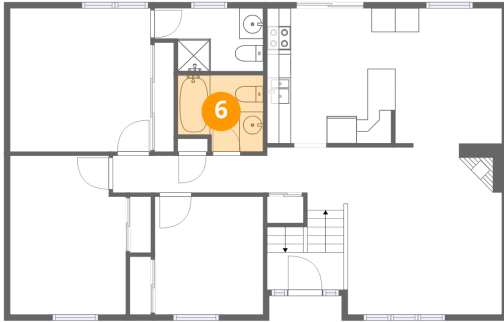


Max Dimensions: 9'0" x 9'10"  
Calculated Area: 89 sq. ft  
Included: Yes

Heated: Yes  
Finished: Yes  
Enclosed: Yes  
Contiguous: Yes  
Permitted: Yes  
Wet space: No  
Addition: No  
Conversion: No

1610 Schouten Drive, Queenswood Heights, Orléans, Ontario,  
Canada, K1E 2J4

## 6 Floor 2 - Bath



Max Dimensions: 7'1" x 6'4"  
Calculated Area: 41 sq. ft  
Included: Yes

Heated: Yes  
Finished: Yes  
Enclosed: Yes  
Contiguous: Yes  
Permitted: Yes  
Wet space: Yes  
Addition: No  
Conversion: No

## 7 Floor 2 - Dining Area



Max Dimensions: 8'10" x 11'3"  
Calculated Area: 100 sq. ft  
Included: Yes

Heated: Yes  
Finished: Yes  
Enclosed: Yes  
Contiguous: Yes  
Permitted: Yes  
Wet space: No  
Addition: No  
Conversion: No

## 8 Floor 2 - Kitchen



Max Dimensions: 10'8" x 11'3"  
Calculated Area: 119 sq. ft  
Included: Yes

Heated: Yes  
Finished: Yes  
Enclosed: Yes  
Contiguous: Yes  
Permitted: Yes  
Wet space: No  
Addition: No  
Conversion: No

1610 Schouten Drive, Queenswood Heights, Orléans, Ontario,  
Canada, K1E 2J4

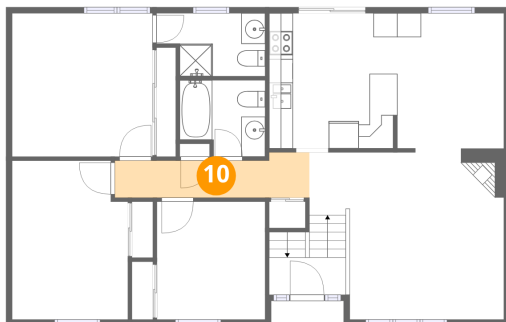
## 9 Floor 2 - Bath



Max Dimensions: 9'1" x 5'3"  
Calculated Area: 42 sq. ft  
Included: Yes

Heated: Yes  
Finished: Yes  
Enclosed: Yes  
Contiguous: Yes  
Permitted: Yes  
Wet space: Yes  
Addition: No  
Conversion: No

## 10 Floor 2 - Hall



Max Dimensions: 16'3" x 3'9"  
Calculated Area: 52 sq. ft  
Included: Yes

Heated: Yes  
Finished: Yes  
Enclosed: Yes  
Contiguous: Yes  
Permitted: Yes  
Wet space: No  
Addition: No  
Conversion: No

## 11 Floor 2 - Living Room

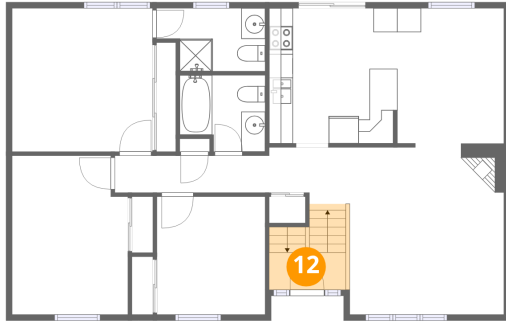


Max Dimensions: 16'3" x 14'3"  
Calculated Area: 197 sq. ft  
Included: Yes

Heated: Yes  
Finished: Yes  
Enclosed: Yes  
Contiguous: Yes  
Permitted: Yes  
Wet space: No  
Addition: No  
Conversion: No

1610 Schouten Drive, Queenswood Heights, Orléans, Ontario,  
Canada, K1E 2J4

## 12 Floor 2 - Foyer



Max Dimensions: 6'5" x 3'1"  
Calculated Area: 42 sq. ft  
Included: Yes

Heated: Yes  
Finished: Yes  
Enclosed: Yes  
Contiguous: Yes  
Permitted: Yes  
Wet space: No  
Addition: No  
Conversion: No

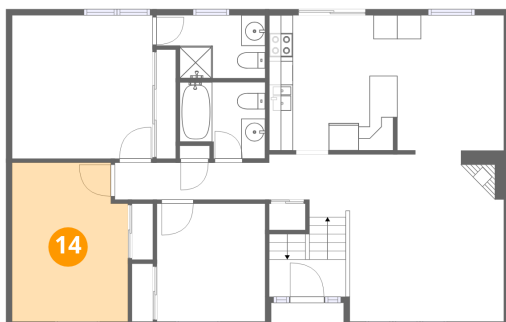
## 13 Floor 2 - Primary Bedroom



Max Dimensions: 11'8" x 11'11"  
Calculated Area: 140 sq. ft  
Included: Yes

Heated: Yes  
Finished: Yes  
Enclosed: Yes  
Contiguous: Yes  
Permitted: Yes  
Wet space: No  
Addition: No  
Conversion: No

## 14 Floor 2 - Bedroom



Max Dimensions: 9'8" x 13'3"  
Calculated Area: 123 sq. ft  
Included: Yes

Heated: Yes  
Finished: Yes  
Enclosed: Yes  
Contiguous: Yes  
Permitted: Yes  
Wet space: No  
Addition: No  
Conversion: No