



Total Area: 2427 sq. ft

Basement: 744 sq. ft, 1st Floor: 950 sq. ft, 2nd Floor: 733 sq. ft

Excluded: Storage 39 sq. ft, Utility 102 sq. ft, Garage 398 sq. ft, Fireplace 10 sq. ft, Open to below 21 sq. ft, Walls: 223 sq. ft

Property summary

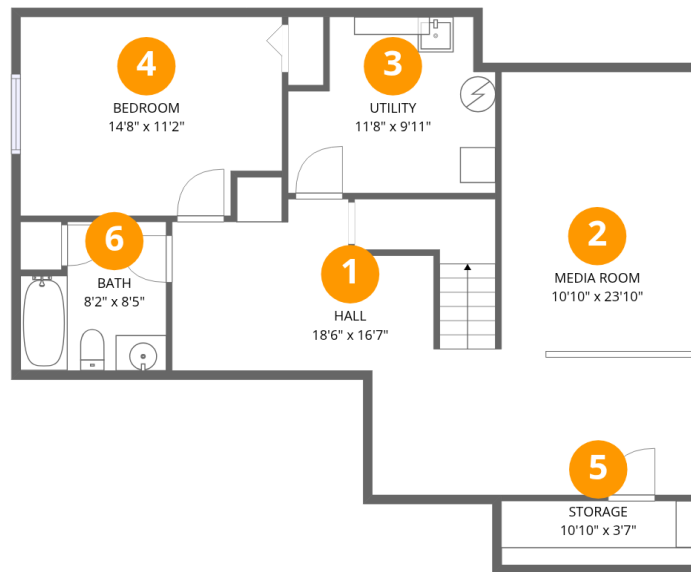


Home data report

63 Cinnabar Way, Stittsville, Ontario, Canada, K2S 1Y9

 **1**
Half baths

 **1**
Garages



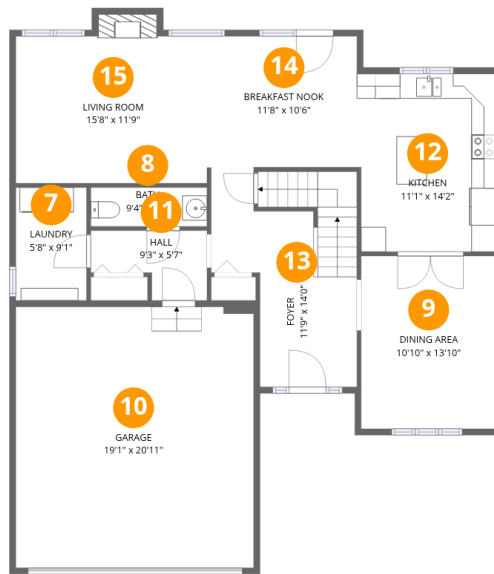
Room dimensions

Floor 1 Below grade

Total:744sqft

Excluded: 141sqft

#		Dimensions	sqft	Counted as living area
1	Hall	18'6" x 16'7"	221 sq. ft	Yes
2	Media Room	10'10" x 23'10"	257 sq. ft	Yes
3	Utility	11'8" x 9'11"	102 sq. ft	No
4	Bedroom	14'8" x 11'2"	158 sq. ft	Yes
5	Storage	10'10" x 3'7"	39 sq. ft	No
6	Bath	8'2" x 8'5"	61 sq. ft	Yes



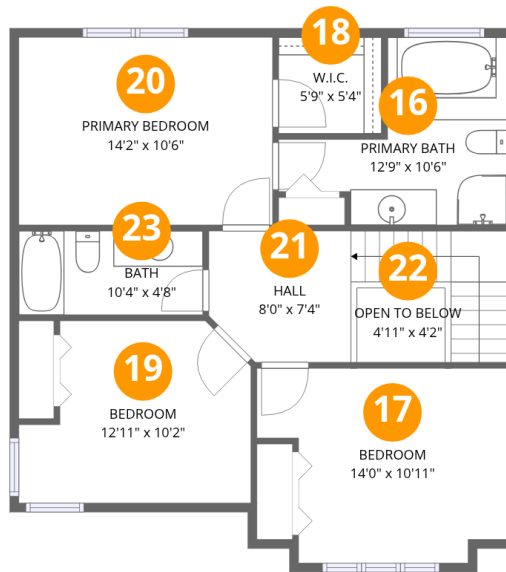
Room dimensions

Floor 2

Total:950sqft

Excluded: 408sqft

#		Dimensions	sqft	Counted as living area
7	Laundry	5'8" x 9'1"	51 sq. ft	Yes
8	Bath	9'4" x 3'1"	29 sq. ft	Yes
9	Dining Area	10'10" x 13'10"	150 sq. ft	Yes
10	Garage	19'1" x 20'11"	398 sq. ft	No
11	Hall	9'3" x 5'7"	41 sq. ft	Yes
12	Kitchen	11'1" x 14'2"	157 sq. ft	Yes
13	Foyer	11'9" x 14'0"	164 sq. ft	Yes
14	Breakfast Nook	11'8" x 10'6"	122 sq. ft	Yes
15	Living Room	15'8" x 11'9"	192 sq. ft	Yes



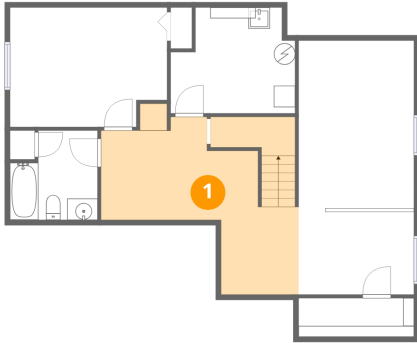
Room dimensions

Floor 3

Total:733sqft Excluded: 21sqft

#		Dimensions	sqft	Counted as living area
16	Primary Bath	12'9" x 10'6"	92 sq. ft	Yes
17	Bedroom	14'0" x 10'11"	133 sq. ft	Yes
18	W.I.C.	5'9" x 5'4"	31 sq. ft	Yes
19	Bedroom	12'11" x 10'2"	116 sq. ft	Yes
20	Primary Bedroom	14'2" x 10'6"	149 sq. ft	Yes
21	Hall	8'0" x 7'4"	99 sq. ft	Yes
22	Open To Below	4'11" x 4'2"	21 sq. ft	No
23	Bath	10'4" x 4'8"	48 sq. ft	Yes

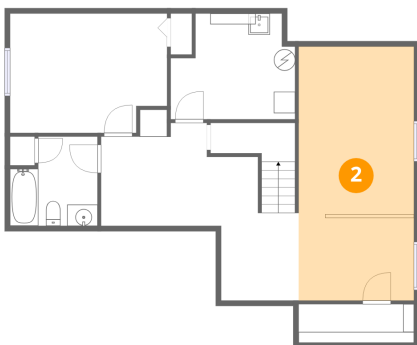
1 Floor 1 - Hall



Dimensions: 18'6" x 16'7"
Area: 221 sq. ft
Counted as living area: Yes

Heated: Yes
Finished: Yes
Enclosed: Yes
Contiguous: Yes
Permitted: Yes
Wet space: No
Addition: No
Conversion: No

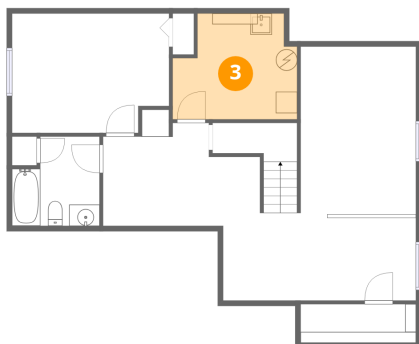
2 Floor 1 - Media Room



Dimensions: 10'10" x 23'10"
Area: 257 sq. ft
Counted as living area: Yes

Heated: Yes
Finished: Yes
Enclosed: Yes
Contiguous: Yes
Permitted: Yes
Wet space: No
Addition: No
Conversion: No

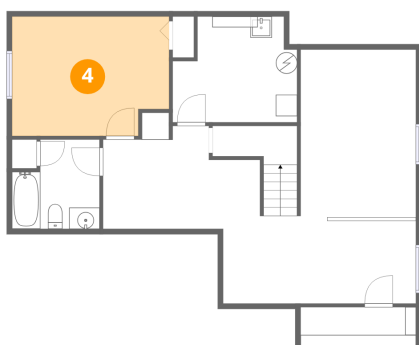
3 Floor 1 - Utility



Dimensions: 11'8" x 9'11"
Area: 102 sq. ft
Counted as living area: No

Heated: Yes
Finished: No
Enclosed: Yes
Contiguous: Yes
Permitted: Yes
Wet space: No
Addition: No
Conversion: No

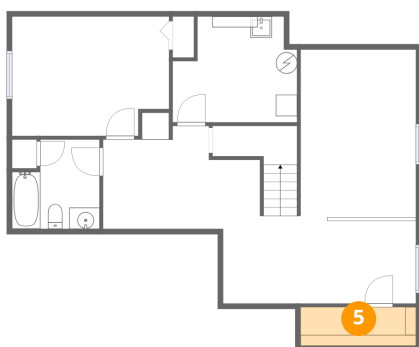
4 Floor 1 - Bedroom



Dimensions: 14'8" x 11'2"
Area: 158 sq. ft
Counted as living area: Yes

Heated: Yes
Finished: Yes
Enclosed: Yes
Contiguous: Yes
Permitted: Yes
Wet space: No
Addition: No
Conversion: No

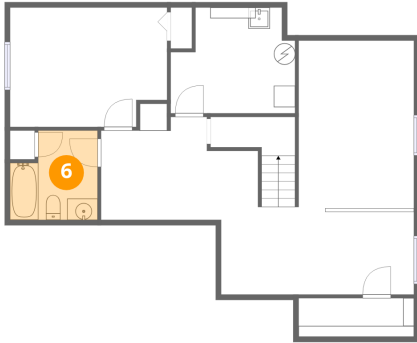
5 Floor 1 - Storage



Dimensions: 10'10" x 3'7"
Area: 39 sq. ft
Counted as living area: No

Heated: No
Finished: No
Enclosed: No
Contiguous: Yes
Permitted: Yes
Wet space: No
Addition: No
Conversion: No

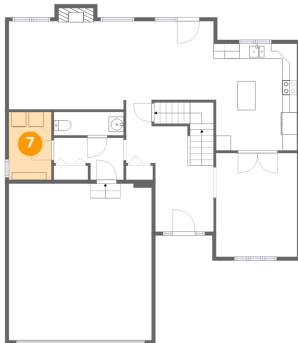
6 Floor 1 - Bath



Dimensions: 8'2" x 8'5"
Area: 61 sq. ft
Counted as living area: Yes

Heated: Yes
Finished: Yes
Enclosed: Yes
Contiguous: Yes
Permitted: Yes
Wet space: Yes
Addition: No
Conversion: No

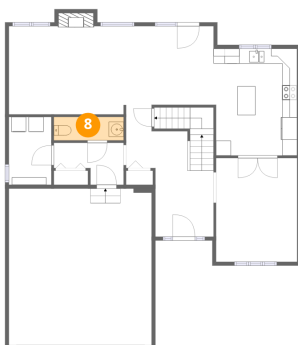
7 Floor 2 - Laundry



Dimensions: 5'8" x 9'1"
Area: 51 sq. ft
Counted as living area: Yes

Heated: Yes
Finished: Yes
Enclosed: Yes
Contiguous: Yes
Permitted: Yes
Wet space: No
Addition: No
Conversion: No

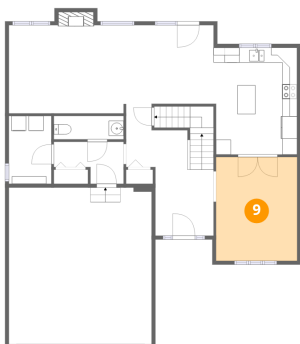
8 Floor 2 - Bath



Dimensions: 9'4" x 3'1"
Area: 29 sq. ft
Counted as living area: Yes

Heated: Yes
Finished: Yes
Enclosed: Yes
Contiguous: Yes
Permitted: Yes
Wet space: Yes
Addition: No
Conversion: No

9 Floor 2 - Dining Area



Dimensions: 10'10" x 13'10"

Area: 150 sq. ft

Counted as living area: Yes

Heated: Yes

Finished: Yes

Enclosed: Yes

Contiguous: Yes

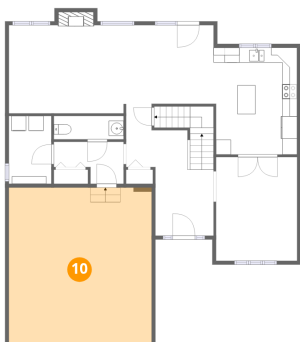
Permitted: Yes

Wet space: No

Addition: No

Conversion: No

10 Floor 2 - Garage



Dimensions: 19'1" x 20'11"

Area: 398 sq. ft

Counted as living area: No

Heated: No

Finished: No

Enclosed: Yes

Contiguous: Yes

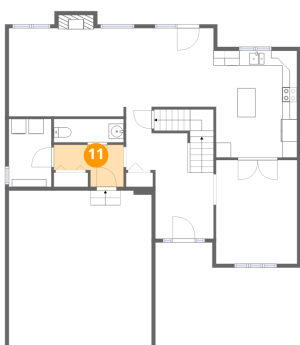
Permitted: Yes

Wet space: No

Addition: No

Conversion: No

11 Floor 2 - Hall



Dimensions: 9'3" x 5'7"

Area: 41 sq. ft

Counted as living area: Yes

Heated: Yes

Finished: Yes

Enclosed: Yes

Contiguous: Yes

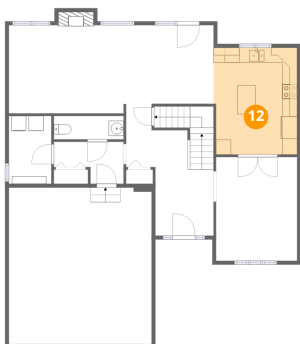
Permitted: Yes

Wet space: No

Addition: No

Conversion: No

12 Floor 2 - Kitchen



Dimensions: 11'1" x 14'2"
Area: 157 sq. ft
Counted as living area: Yes

Heated: Yes
Finished: Yes
Enclosed: Yes
Contiguous: Yes
Permitted: Yes
Wet space: No
Addition: No
Conversion: No

13 Floor 2 - Foyer



Dimensions: 11'9" x 14'0"
Area: 164 sq. ft
Counted as living area: Yes

Heated: Yes
Finished: Yes
Enclosed: Yes
Contiguous: Yes
Permitted: Yes
Wet space: No
Addition: No
Conversion: No

14 Floor 2 - Breakfast Nook



Dimensions: 11'8" x 10'6"
Area: 122 sq. ft
Counted as living area: Yes

Heated: Yes
Finished: Yes
Enclosed: Yes
Contiguous: Yes
Permitted: Yes
Wet space: No
Addition: No
Conversion: No

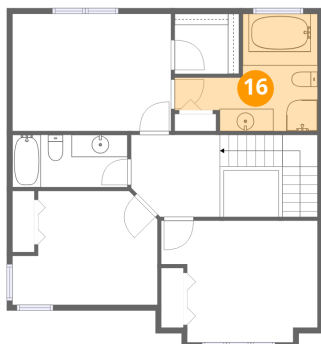
15 Floor 2 - Living Room



Dimensions: 15'8" x 11'9"
Area: 192 sq. ft
Counted as living area: Yes

Heated: Yes
Finished: Yes
Enclosed: Yes
Contiguous: Yes
Permitted: Yes
Wet space: No
Addition: No
Conversion: No

16 Floor 3 - Primary Bath



Dimensions: 12'9" x 10'6"
Area: 92 sq. ft
Counted as living area: Yes

Heated: Yes
Finished: Yes
Enclosed: Yes
Contiguous: Yes
Permitted: Yes
Wet space: Yes
Addition: No
Conversion: No

17 Floor 3 - Bedroom



Dimensions: 14'0" x 10'11"
Area: 133 sq. ft
Counted as living area: Yes

Heated: Yes
Finished: Yes
Enclosed: Yes
Contiguous: Yes
Permitted: Yes
Wet space: No
Addition: No
Conversion: No

18 Floor 3 - W.I.C.



Dimensions: 5'9" x 5'4"
Area: 31 sq. ft
Counted as living area: Yes

Heated: Yes
Finished: Yes
Enclosed: Yes
Contiguous: Yes
Permitted: Yes
Wet space: No
Addition: No
Conversion: No

19 Floor 3 - Bedroom



Dimensions: 12'11" x 10'2"
Area: 116 sq. ft
Counted as living area: Yes

Heated: Yes
Finished: Yes
Enclosed: Yes
Contiguous: Yes
Permitted: Yes
Wet space: No
Addition: No
Conversion: No

20 Floor 3 - Primary Bedroom



Dimensions: 14'2" x 10'6"
Area: 149 sq. ft
Counted as living area: Yes

Heated: Yes
Finished: Yes
Enclosed: Yes
Contiguous: Yes
Permitted: Yes
Wet space: No
Addition: No
Conversion: No

21 Floor 3 - Hall



Dimensions: 8'0" x 7'4"
Area: 99 sq. ft
Counted as living area: Yes

Heated: Yes
Finished: Yes
Enclosed: Yes
Contiguous: Yes
Permitted: Yes
Wet space: No
Addition: No
Conversion: No

22 Floor 3 - Open To Below



Dimensions: 4'11" x 4'2"
Area: 21 sq. ft
Counted as living area: No

Heated: No
Finished: No
Enclosed: No
Contiguous: Yes
Permitted: No
Wet space: No
Addition: No
Conversion: No

23 Floor 3 - Bath



Dimensions: 10'4" x 4'8"
Area: 48 sq. ft
Counted as living area: Yes

Heated: Yes
Finished: Yes
Enclosed: Yes
Contiguous: Yes
Permitted: Yes
Wet space: Yes
Addition: No
Conversion: No