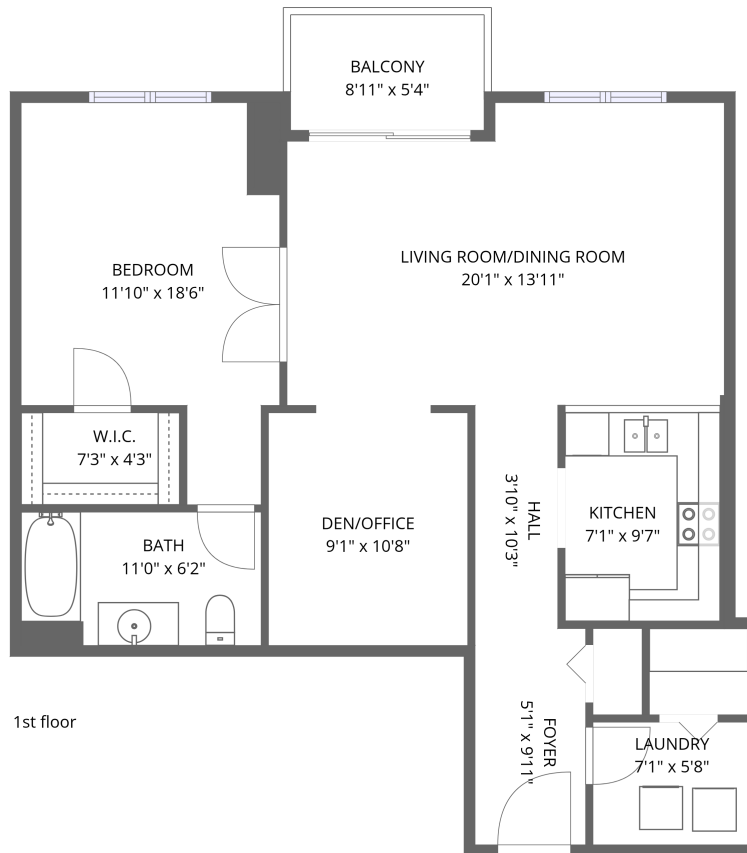


Home data report

1640 Maple Ave #808, Evanston, IL, US



Total Area: 903 sq. ft

1st Floor: 903 sq. ft

Excluded: Balcony 47 sq. ft, Walls: 0 sq. ft

Property summary

 **1** Floors

 **1** Bedrooms

 **1** Bathrooms

Home data report

1640 Maple Ave #808, Evanston, IL, US



Room dimensions

Floor 1

Total:903sqft

Excluded: 47sqft

#		Dimensions	sqft	Counted as living area
1	Kitchen	7'1" x 9'7"	68 sq. ft	Yes
2	Foyer	5'1" x 9'11"	50 sq. ft	Yes
3	W.I.C.	7'3" x 4'3"	31 sq. ft	Yes
4	Hall	3'10" x 10'3"	39 sq. ft	Yes
5	Bath	11'0" x 6'2"	68 sq. ft	Yes
6	Balcony	8'11" x 5'4"	47 sq. ft	No
7	Bedroom	11'10" x 18'6"	219 sq. ft	Yes
8	Living ROOM/DINING Room	20'1" x 13'11"	279 sq. ft	Yes
9	Den/Office	9'1" x 10'8"	97 sq. ft	Yes
10	Laundry	7'1" x 5'8"	40 sq. ft	Yes

1 Floor 1 - Kitchen



Dimensions: 7'1" x 9'7"
Area: 68 sq. ft
Counted as living area: Yes

Heated: Yes
Finished: Yes
Enclosed: Yes
Contiguous: Yes
Permitted: Yes
Wet space: No
Addition: No
Conversion: No

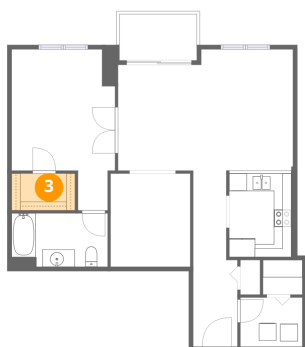
2 Floor 1 - Foyer



Dimensions: 5'1" x 9'11"
Area: 50 sq. ft
Counted as living area: Yes

Heated: Yes
Finished: Yes
Enclosed: Yes
Contiguous: Yes
Permitted: Yes
Wet space: No
Addition: No
Conversion: No

3 Floor 1 - W.I.C.



Dimensions: 7'3" x 4'3"
Area: 31 sq. ft
Counted as living area: Yes

Heated: Yes
Finished: Yes
Enclosed: Yes
Contiguous: Yes
Permitted: Yes
Wet space: No
Addition: No
Conversion: No

4 Floor 1 - Hall



Dimensions: 3'10" x 10'3"
Area: 39 sq. ft
Counted as living area: Yes

Heated: Yes
Finished: Yes
Enclosed: Yes
Contiguous: Yes
Permitted: Yes
Wet space: No
Addition: No
Conversion: No

5 Floor 1 - Bath



Dimensions: 11'0" x 6'2"
Area: 68 sq. ft
Counted as living area: Yes

Heated: Yes
Finished: Yes
Enclosed: Yes
Contiguous: Yes
Permitted: Yes
Wet space: Yes
Addition: No
Conversion: No

6 Floor 1 - Balcony



Dimensions: 8'11" x 5'4"
Area: 47 sq. ft
Counted as living area: No

Heated: No
Finished: No
Enclosed: No
Contiguous: Yes
Permitted: Yes
Wet space: No
Addition: No
Conversion: No

7 Floor 1 - Bedroom



Dimensions: 11'10" x 18'6"
Area: 219 sq. ft
Counted as living area: Yes

Heated: Yes
Finished: Yes
Enclosed: Yes
Contiguous: Yes
Permitted: Yes
Wet space: No
Addition: No
Conversion: No

8 Floor 1 - Living ROOM/DINING Room



Dimensions: 20'1" x 13'11"
Area: 279 sq. ft
Counted as living area: Yes

Heated: Yes
Finished: Yes
Enclosed: Yes
Contiguous: Yes
Permitted: Yes
Wet space: No
Addition: No
Conversion: No

9 Floor 1 - Den/Office



Dimensions: 9'1" x 10'8"
Area: 97 sq. ft
Counted as living area: Yes

Heated: Yes
Finished: Yes
Enclosed: Yes
Contiguous: Yes
Permitted: Yes
Wet space: No
Addition: No
Conversion: No

10 Floor 1 - Laundry



Dimensions: 7'1" x 5'8"
Area: 40 sq. ft
Counted as living area: Yes

Heated: Yes
Finished: Yes
Enclosed: Yes
Contiguous: Yes
Permitted: Yes
Wet space: No
Addition: No
Conversion: No