

Home data report

404 East Chelsea Street, Old Seminole Heights, Tampa,
Hillsborough County, Florida, United States, 33603



Total Area: 1241 sq. ft

Below Ground: 0 sq. ft, Floor 2: 1241 sq. ft

Excluded: Shed 97 sq. ft, Deck 91 sq. ft, Porch 276 sq. ft, Carport 212 sq. ft, Walls: 96 sq. ft

Property summary

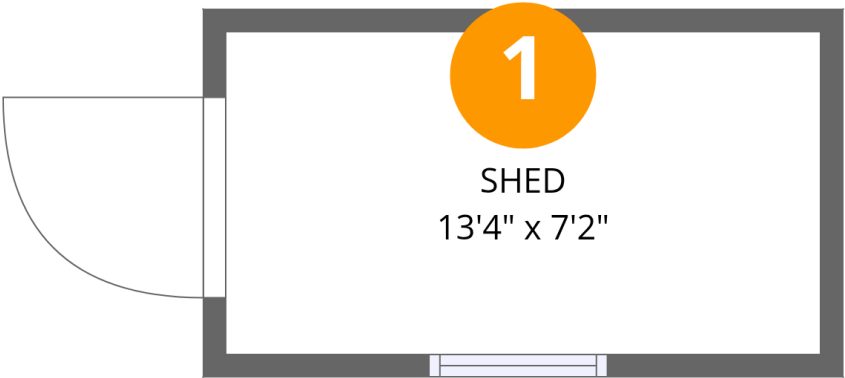
 **2** Floors

 **3** Bedrooms

 **2** Bathrooms

Home data report

404 East Chelsea Street, Old Seminole Heights, Tampa,
Hillsborough County, Florida, United States, 33603



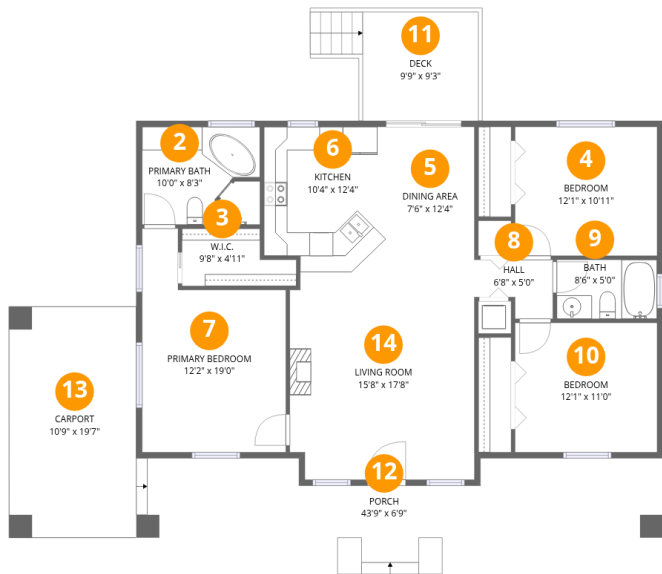
Room dimensions

Floor 1 Below grade Total:0sqft Excluded: 97sqft

#		Dimensions	sqft	Counted as living area
1	Shed	13'4" x 7'2"	97 sq. ft	No

Home data report

404 East Chelsea Street, Old Seminole Heights, Tampa,
Hillsborough County, Florida, United States, 33603



Room dimensions

Floor 2 Total:1241sqft Excluded: 579sqft

#		Dimensions	sqft	Counted as living area
2	Primary Bath	10'0" x 8'3"	81 sq. ft	Yes
3	W.I.C.	9'8" x 4'11"	39 sq. ft	Yes
4	Bedroom	12'1" x 10'11"	132 sq. ft	Yes
5	Dining Area	7'6" x 12'4"	93 sq. ft	Yes
6	Kitchen	10'4" x 12'4"	123 sq. ft	Yes
7	Primary Bedroom	12'2" x 19'0"	184 sq. ft	Yes
8	Hall	6'8" x 5'0"	27 sq. ft	Yes
9	Bath	8'6" x 5'0"	43 sq. ft	Yes
10	Bedroom	12'1" x 11'0"	133 sq. ft	Yes
11	Deck	9'9" x 9'3"	91 sq. ft	No
12	Porch	43'9" x 6'9"	276 sq. ft	No

Home data report

404 East Chelsea Street, Old Seminole Heights, Tampa,
Hillsborough County, Florida, United States, 33603

#		Dimensions	sqft	Counted as living area
13	Carport	10'9" x 19'7"	212 sq. ft	No
14	Living Room	15'8" x 17'8"	272 sq. ft	Yes

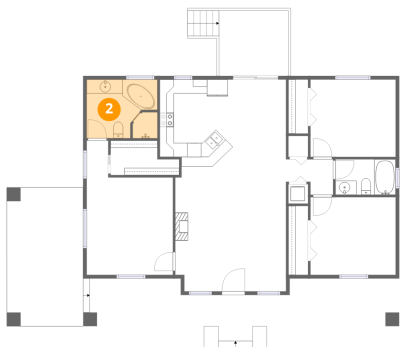
1 Floor 1 - Shed



Dimensions: 13'4" x 7'2"
Area: 97 sq. ft
Counted as living area: No

Heated: No
Finished: No
Enclosed: No
Contiguous: Yes
Permitted: Yes
Wet space: No
Addition: No
Conversion: No

2 Floor 2 - Primary Bath



Dimensions: 10'0" x 8'3"
Area: 81 sq. ft
Counted as living area: Yes

Heated: Yes
Finished: Yes
Enclosed: Yes
Contiguous: Yes
Permitted: Yes
Wet space: Yes
Addition: No
Conversion: No

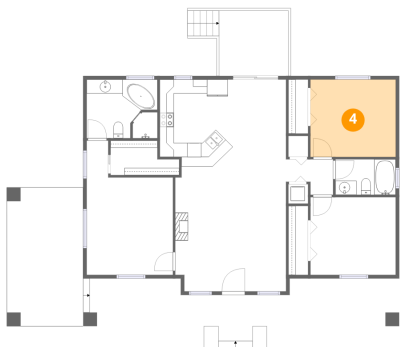
3 Floor 2 - W.I.C.



Dimensions: 9'8" x 4'11"
Area: 39 sq. ft
Counted as living area: Yes

Heated: Yes
Finished: Yes
Enclosed: Yes
Contiguous: Yes
Permitted: Yes
Wet space: No
Addition: No
Conversion: No

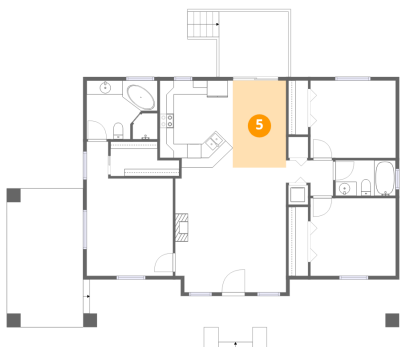
4 Floor 2 - Bedroom



Dimensions: 12'1" x 10'11"
Area: 132 sq. ft
Counted as living area: Yes

Heated: Yes
Finished: Yes
Enclosed: Yes
Contiguous: Yes
Permitted: Yes
Wet space: No
Addition: No
Conversion: No

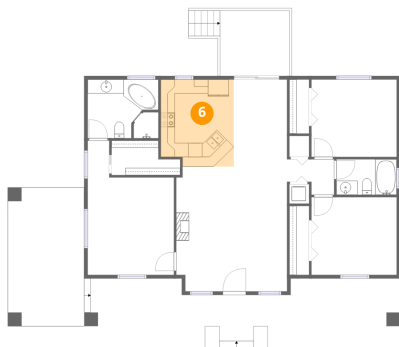
5 Floor 2 - Dining Area



Dimensions: 7'6" x 12'4"
Area: 93 sq. ft
Counted as living area: Yes

Heated: Yes
Finished: Yes
Enclosed: Yes
Contiguous: Yes
Permitted: Yes
Wet space: No
Addition: No
Conversion: No

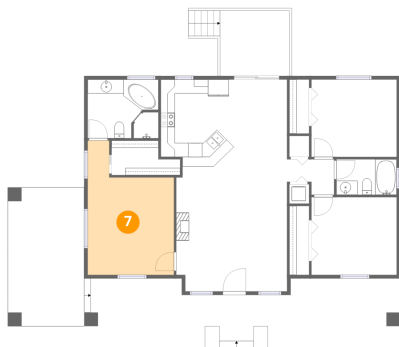
6 Floor 2 - Kitchen



Dimensions: 10'4" x 12'4"
Area: 123 sq. ft
Counted as living area: Yes

Heated: Yes
Finished: Yes
Enclosed: Yes
Contiguous: Yes
Permitted: Yes
Wet space: No
Addition: No
Conversion: No

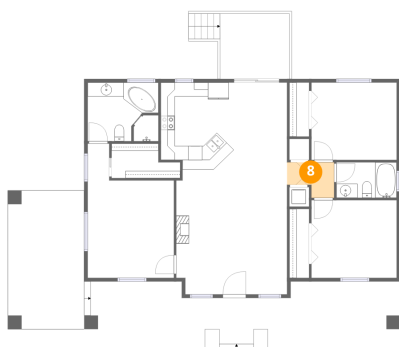
7 Floor 2 - Primary Bedroom



Dimensions: 12'2" x 19'0"
Area: 184 sq. ft
Counted as living area: Yes

Heated: Yes
Finished: Yes
Enclosed: Yes
Contiguous: Yes
Permitted: Yes
Wet space: No
Addition: No
Conversion: No

8 Floor 2 - Hall

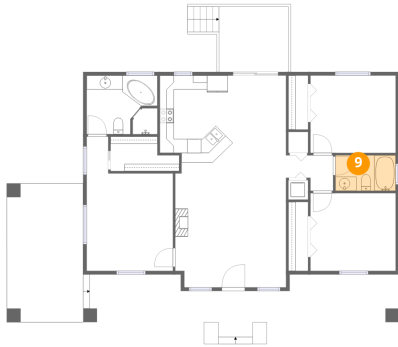


Dimensions: 6'8" x 5'0"
Area: 27 sq. ft
Counted as living area: Yes

Heated: Yes
Finished: Yes
Enclosed: Yes
Contiguous: Yes
Permitted: Yes
Wet space: No
Addition: No
Conversion: No

404 East Chelsea Street, Old Seminole Heights, Tampa,
Hillsborough County, Florida, United States, 33603

9 Floor 2 - Bath



Dimensions: 8'6" x 5'0"
Area: 43 sq. ft
Counted as living area: Yes

Heated: Yes
Finished: Yes
Enclosed: Yes
Contiguous: Yes
Permitted: Yes
Wet space: Yes
Addition: No
Conversion: No

10 Floor 2 - Bedroom



Dimensions: 12'1" x 11'0"
Area: 133 sq. ft
Counted as living area: Yes

Heated: Yes
Finished: Yes
Enclosed: Yes
Contiguous: Yes
Permitted: Yes
Wet space: No
Addition: No
Conversion: No

11 Floor 2 - Deck

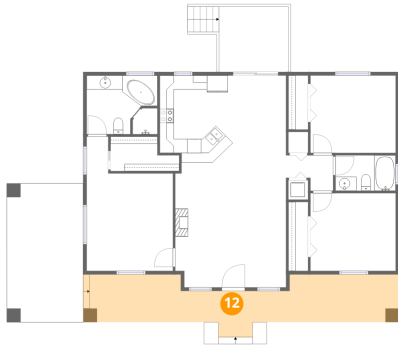


Dimensions: 9'9" x 9'3"
Area: 91 sq. ft
Counted as living area: No

Heated: No
Finished: No
Enclosed: No
Contiguous: Yes
Permitted: Yes
Wet space: No
Addition: No
Conversion: No

404 East Chelsea Street, Old Seminole Heights, Tampa,
Hillsborough County, Florida, United States, 33603

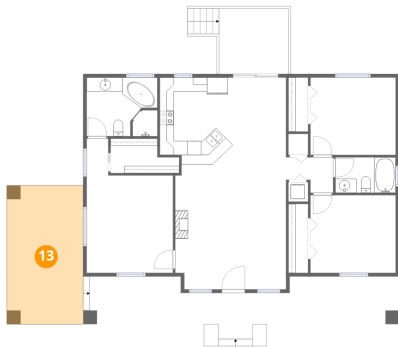
12 Floor 2 - Porch



Dimensions: 43'9" x 6'9"
Area: 276 sq. ft
Counted as living area: No

Heated: No
Finished: No
Enclosed: No
Contiguous: Yes
Permitted: Yes
Wet space: No
Addition: No
Conversion: No

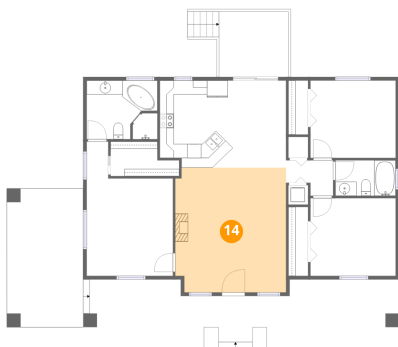
13 Floor 2 - Carport



Dimensions: 10'9" x 19'7"
Area: 212 sq. ft
Counted as living area: No

Heated: No
Finished: Yes
Enclosed: No
Contiguous: Yes
Permitted: Yes
Wet space: No
Addition: No
Conversion: No

14 Floor 2 - Living Room



Dimensions: 15'8" x 17'8"
Area: 272 sq. ft
Counted as living area: Yes

Heated: Yes
Finished: Yes
Enclosed: Yes
Contiguous: Yes
Permitted: Yes
Wet space: No
Addition: No
Conversion: No