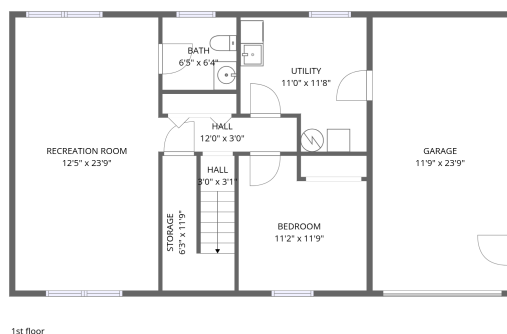
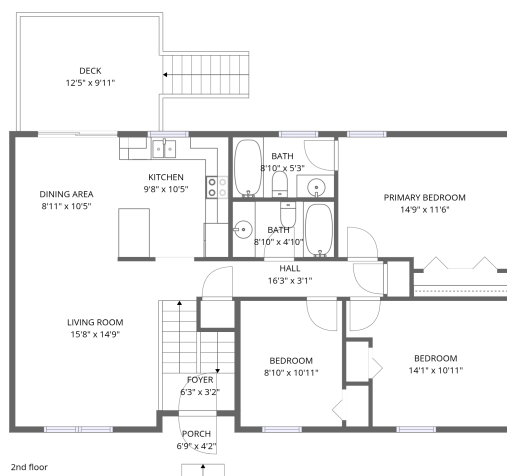


Home data report

300 Brittany Lane, Braxton Heights, Salem, Salem city, Virginia,
United States, 24153



Total Area: 1744 sq. ft

1st Floor: 681 sq. ft, 2nd Floor: 1063 sq. ft

Excluded: Garage 280 sq. ft, Storage 46 sq. ft, Deck 147 sq. ft, Porch 32 sq. ft, Undefined 6 sq. ft, Walls: 149 sq. ft

Property summary



Home data report

**300 Brittany Lane, Braxton Heights, Salem, Salem city, Virginia,
United States, 24153**



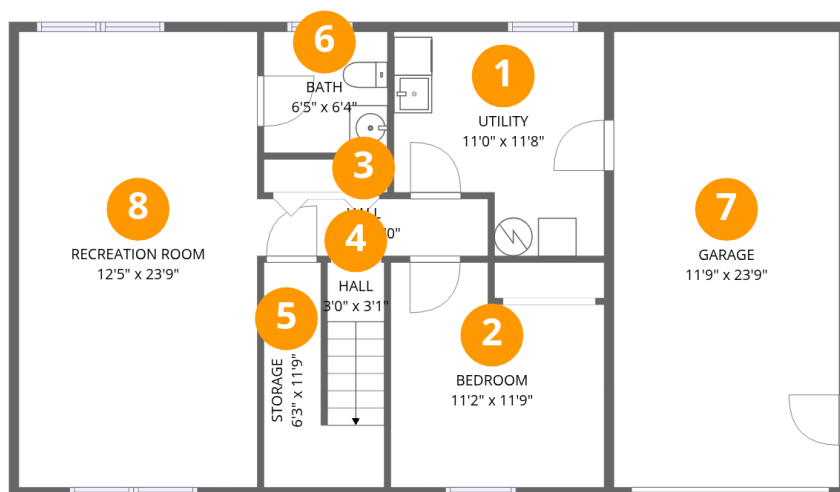
1
Half baths



1
Garages

Home data report

300 Brittany Lane, Braxton Heights, Salem, Salem city, Virginia, United States, 24153



Room dimensions

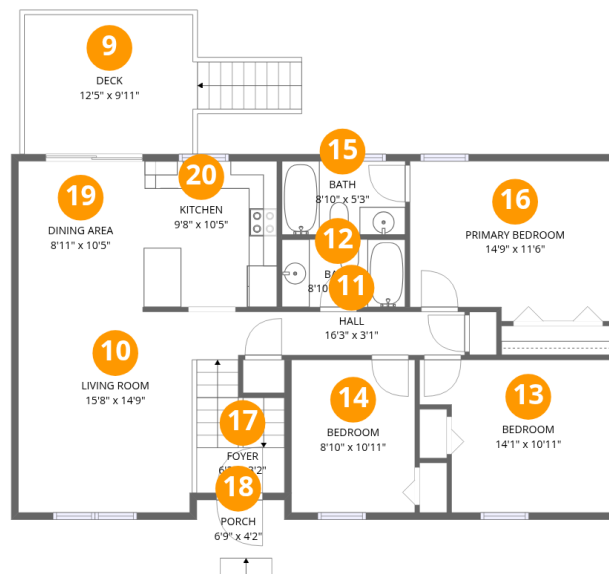
Floor 1

Total:681sqft Excluded: 326sqft

#		Dimensions	sqft	Counted as living area
1	Utility	11'0" x 11'8"	129 sq. ft	Yes
2	Bedroom	11'2" x 11'9"	131 sq. ft	Yes
3	Hall	12'0" x 3'0"	36 sq. ft	Yes
4	Hall	3'0" x 3'1"	9 sq. ft	Yes
5	Storage	6'3" x 11'9"	74 sq. ft	No
6	Bath	6'5" x 6'4"	41 sq. ft	Yes
7	Garage	11'9" x 23'9"	280 sq. ft	No
8	Recreation Room	12'5" x 23'9"	295 sq. ft	Yes

Home data report

300 Brittany Lane, Braxton Heights, Salem, Salem city, Virginia,
United States, 24153



Room dimensions

Floor 2

Total:1063sqft Excluded: 185sqft

#		Dimensions	sqft	Counted as living area
9	Deck	12'5" x 9'11"	123 sq. ft	No
10	Living Room	15'8" x 14'9"	231 sq. ft	Yes
11	Hall	16'3" x 3'1"	51 sq. ft	Yes
12	Bath	8'10" x 4'10"	43 sq. ft	Yes
13	Bedroom	14'1" x 10'11"	154 sq. ft	Yes
14	Bedroom	8'10" x 10'11"	97 sq. ft	Yes
15	Bath	8'10" x 5'3"	47 sq. ft	Yes
16	Primary Bedroom	14'9" x 11'6"	169 sq. ft	Yes
17	Foyer	6'3" x 3'2"	20 sq. ft	Yes
18	Porch	6'9" x 4'2"	28 sq. ft	No
19	Dining Area	8'11" x 10'5"	93 sq. ft	Yes

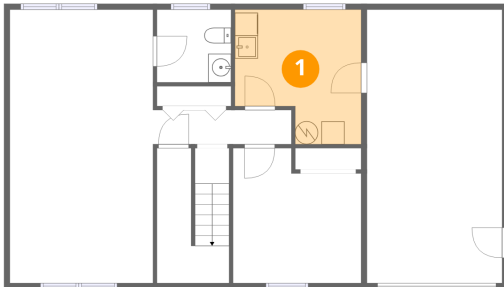
Home data report

**300 Brittany Lane, Braxton Heights, Salem, Salem city, Virginia,
United States, 24153**

#		Dimensions	sqft	Counted as living area
20	Kitchen	9'8" x 10'5"	100 sq. ft	Yes

300 Brittany Lane, Braxton Heights, Salem, Salem city, Virginia,
United States, 24153

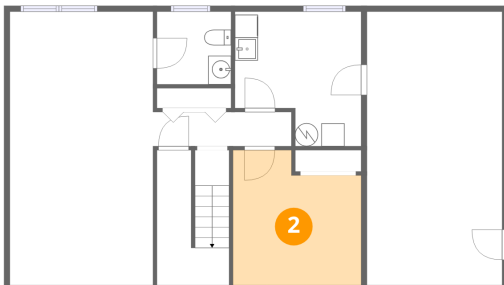
1 Floor 1 - Utility



Dimensions: 11'0" x 11'8"
Area: 129 sq. ft
Counted as living area: Yes

Heated: Yes
Finished: Yes
Enclosed: Yes
Contiguous: Yes
Permitted: Yes
Wet space: No
Addition: No
Conversion: No

2 Floor 1 - Bedroom

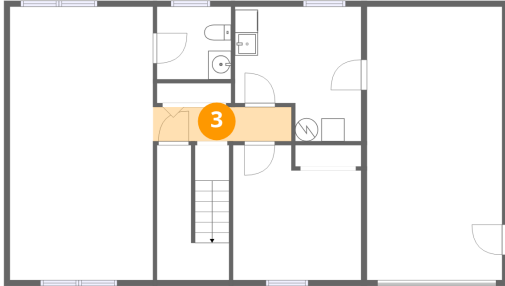


Dimensions: 11'2" x 11'9"
Area: 131 sq. ft
Counted as living area: Yes

Heated: Yes
Finished: Yes
Enclosed: Yes
Contiguous: Yes
Permitted: Yes
Wet space: No
Addition: No
Conversion: No

300 Brittany Lane, Braxton Heights, Salem, Salem city, Virginia,
United States, 24153

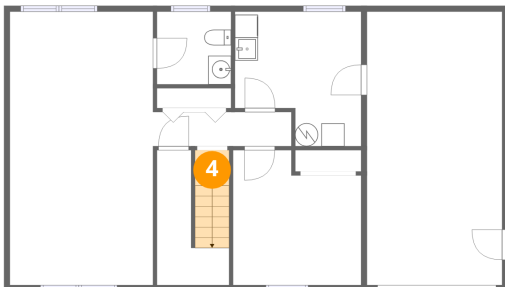
3 Floor 1 - Hall



Dimensions: 12'0" x 3'0"
Area: 36 sq. ft
Counted as living area: Yes

Heated: Yes
Finished: Yes
Enclosed: Yes
Contiguous: Yes
Permitted: Yes
Wet space: No
Addition: No
Conversion: No

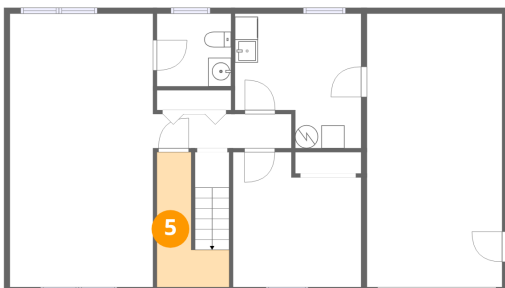
4 Floor 1 - Hall



Dimensions: 3'0" x 3'1"
Area: 9 sq. ft
Counted as living area: Yes

Heated: Yes
Finished: Yes
Enclosed: Yes
Contiguous: Yes
Permitted: Yes
Wet space: No
Addition: No
Conversion: No

5 Floor 1 - Storage

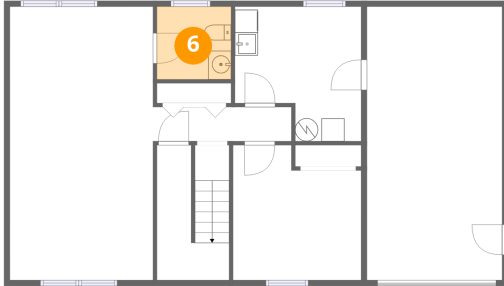


Dimensions: 6'3" x 11'9"
Area: 74 sq. ft
Counted as living area: No

Heated: No
Finished: No
Enclosed: No
Contiguous: Yes
Permitted: Yes
Wet space: No
Addition: No
Conversion: No

300 Brittany Lane, Braxton Heights, Salem, Salem city, Virginia,
United States, 24153

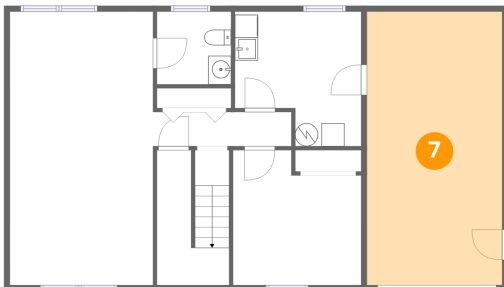
6 Floor 1 - Bath



Dimensions: 6'5" x 6'4"
Area: 41 sq. ft
Counted as living area: Yes

Heated: Yes
Finished: Yes
Enclosed: Yes
Contiguous: Yes
Permitted: Yes
Wet space: Yes
Addition: No
Conversion: No

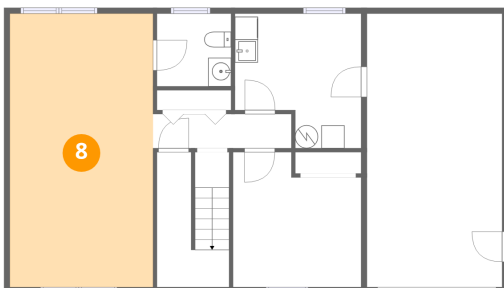
7 Floor 1 - Garage



Dimensions: 11'9" x 23'9"
Area: 280 sq. ft
Counted as living area: No

Heated: No
Finished: No
Enclosed: Yes
Contiguous: Yes
Permitted: Yes
Wet space: No
Addition: No
Conversion: No

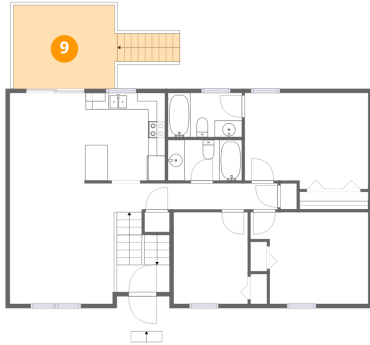
8 Floor 1 - Recreation Room



Dimensions: 12'5" x 23'9"
Area: 295 sq. ft
Counted as living area: Yes

Heated: Yes
Finished: Yes
Enclosed: Yes
Contiguous: Yes
Permitted: Yes
Wet space: No
Addition: No
Conversion: No

9 Floor 2 - Deck



Dimensions: 12'5" x 9'11"
Area: 123 sq. ft
Counted as living area: No

Heated: No
Finished: No
Enclosed: No
Contiguous: Yes
Permitted: Yes
Wet space: No
Addition: No
Conversion: No

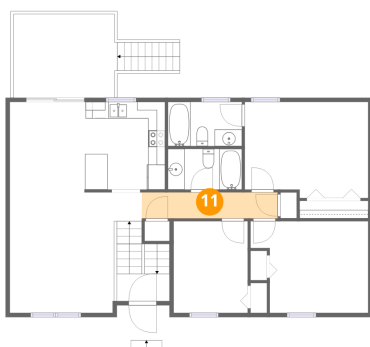
10 Floor 2 - Living Room



Dimensions: 15'8" x 14'9"
Area: 231 sq. ft
Counted as living area: Yes

Heated: Yes
Finished: Yes
Enclosed: Yes
Contiguous: Yes
Permitted: Yes
Wet space: No
Addition: No
Conversion: No

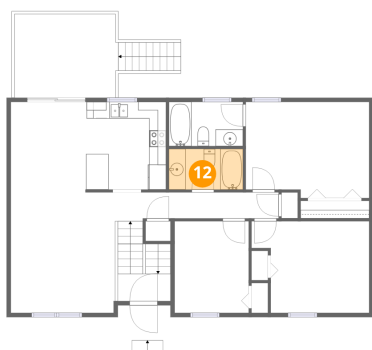
11 Floor 2 - Hall



Dimensions: 16'3" x 3'1"
Area: 51 sq. ft
Counted as living area: Yes

Heated: Yes
Finished: Yes
Enclosed: Yes
Contiguous: Yes
Permitted: Yes
Wet space: No
Addition: No
Conversion: No

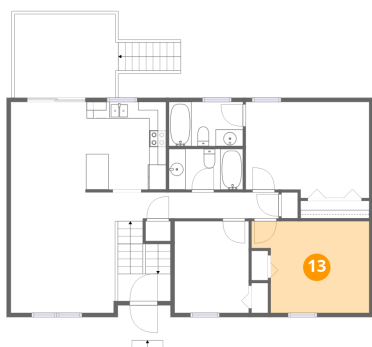
12 Floor 2 - Bath



Dimensions: 8'10" x 4'10"
Area: 43 sq. ft
Counted as living area: Yes

Heated: Yes
Finished: Yes
Enclosed: Yes
Contiguous: Yes
Permitted: Yes
Wet space: Yes
Addition: No
Conversion: No

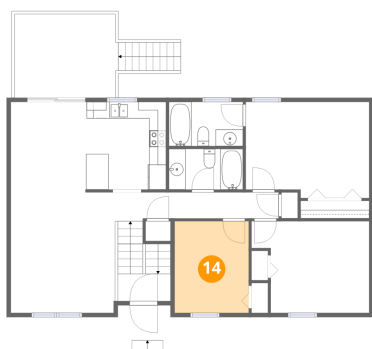
13 Floor 2 - Bedroom



Dimensions: 14'1" x 10'11"
Area: 154 sq. ft
Counted as living area: Yes

Heated: Yes
Finished: Yes
Enclosed: Yes
Contiguous: Yes
Permitted: Yes
Wet space: No
Addition: No
Conversion: No

14 Floor 2 - Bedroom

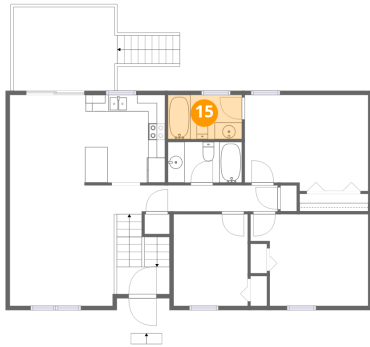


Dimensions: 8'10" x 10'11"
Area: 97 sq. ft
Counted as living area: Yes

Heated: Yes
Finished: Yes
Enclosed: Yes
Contiguous: Yes
Permitted: Yes
Wet space: No
Addition: No
Conversion: No

300 Brittany Lane, Braxton Heights, Salem, Salem city, Virginia,
United States, 24153

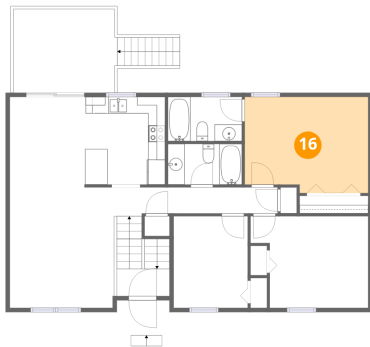
15 Floor 2 - Bath



Dimensions: 8'10" x 5'3"
Area: 47 sq. ft
Counted as living area: Yes

Heated: Yes
Finished: Yes
Enclosed: Yes
Contiguous: Yes
Permitted: Yes
Wet space: Yes
Addition: No
Conversion: No

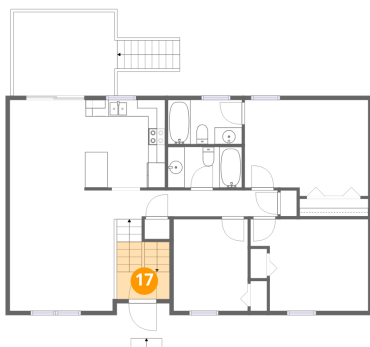
16 Floor 2 - Primary Bedroom



Dimensions: 14'9" x 11'6"
Area: 169 sq. ft
Counted as living area: Yes

Heated: Yes
Finished: Yes
Enclosed: Yes
Contiguous: Yes
Permitted: Yes
Wet space: No
Addition: No
Conversion: No

17 Floor 2 - Foyer

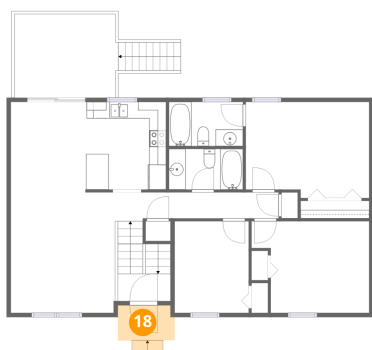


Dimensions: 6'3" x 3'2"
Area: 20 sq. ft
Counted as living area: Yes

Heated: Yes
Finished: Yes
Enclosed: Yes
Contiguous: Yes
Permitted: Yes
Wet space: No
Addition: No
Conversion: No

300 Brittany Lane, Braxton Heights, Salem, Salem city, Virginia,
United States, 24153

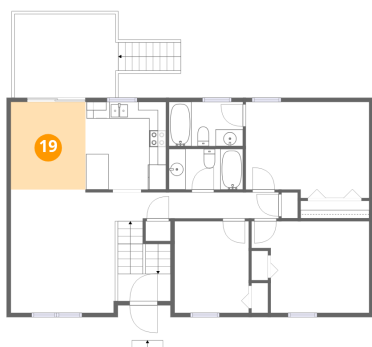
18 Floor 2 - Porch



Dimensions: 6'9" x 4'2"
Area: 28 sq. ft
Counted as living area: No

Heated: No
Finished: No
Enclosed: No
Contiguous: Yes
Permitted: Yes
Wet space: No
Addition: No
Conversion: No

19 Floor 2 - Dining Area



Dimensions: 8'11" x 10'5"
Area: 93 sq. ft
Counted as living area: Yes

Heated: Yes
Finished: Yes
Enclosed: Yes
Contiguous: Yes
Permitted: Yes
Wet space: No
Addition: No
Conversion: No

20 Floor 2 - Kitchen



Dimensions: 9'8" x 10'5"
Area: 100 sq. ft
Counted as living area: Yes

Heated: Yes
Finished: Yes
Enclosed: Yes
Contiguous: Yes
Permitted: Yes
Wet space: No
Addition: No
Conversion: No