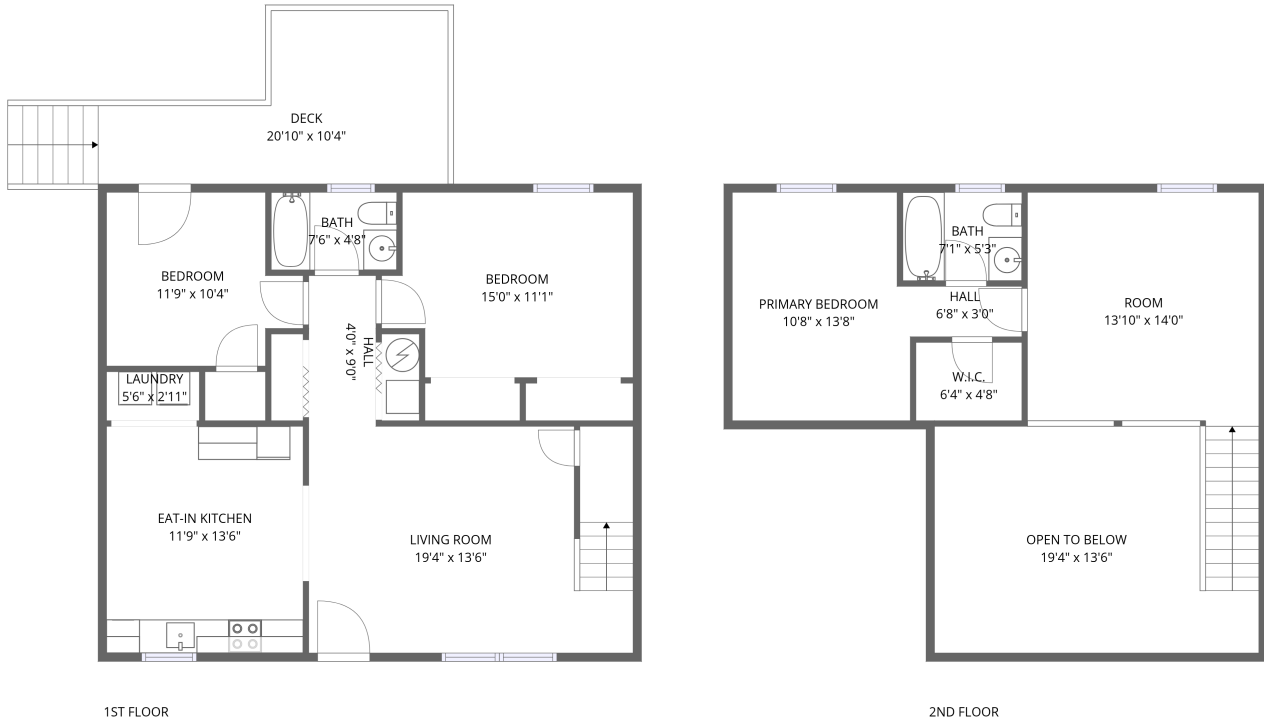


Home data report

**2321 Dunkirk Avenue Northeast, Roanoke, Virginia 24012,
United States**




Total Area: 1333 sq. ft

1st Floor: 864 sq. ft, 2nd Floor: 469 sq. ft

Excluded: Deck 158 sq. ft, Open to below 228 sq. ft, Walls: 119 sq. ft

Property summary

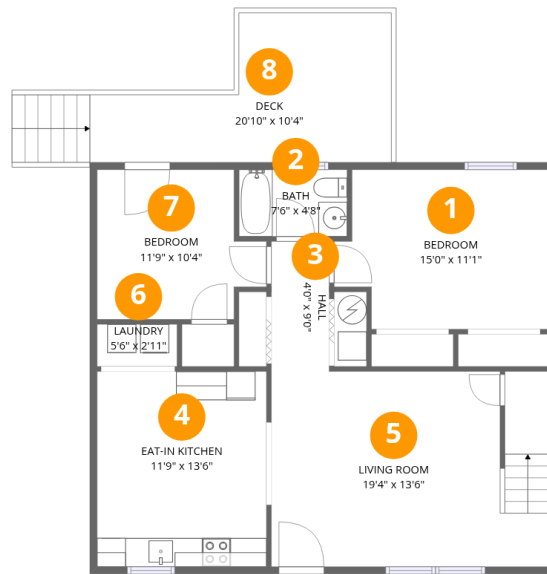
 **2** Floors

 **3** Bedrooms

 **2** Bathrooms

Home data report

2321 Dunkirk Avenue Northeast, Roanoke, Virginia 24012, United States



Room dimensions

Floor 1

Total:864sqft

Excluded: 158sqft

#		Dimensions	sqft	Counted as living area
1	Bedroom	15'0" x 11'1"	166 sq. ft	Yes
2	Bath	7'6" x 4'8"	35 sq. ft	Yes
3	Hall	4'0" x 9'0"	36 sq. ft	Yes
4	Eat-in Kitchen	11'9" x 13'6"	159 sq. ft	Yes
5	Living Room	19'4" x 13'6"	262 sq. ft	Yes
6	Laundry	5'6" x 2'11"	16 sq. ft	Yes
7	Bedroom	11'9" x 10'4"	122 sq. ft	Yes
8	Deck	20'10" x 10'4"	215 sq. ft	No

Home data report

2321 Dunkirk Avenue Northeast, Roanoke, Virginia 24012, United States



Room dimensions

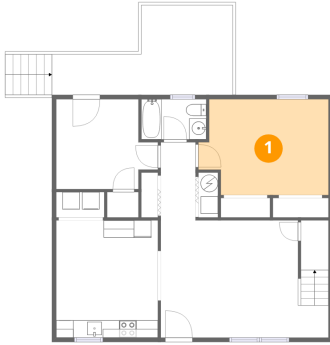
Floor 2

Total:469sqft

Excluded: 228sqft

#		Dimensions	sqft	Counted as living area
9	Bath	7'1" x 5'3"	38 sq. ft	Yes
10	Hall	6'8" x 3'0"	20 sq. ft	Yes
11	Open To Below	19'4" x 13'6"	262 sq. ft	No
12	Room	13'10" x 14'0"	193 sq. ft	Yes
13	W.I.C.	6'4" x 4'8"	30 sq. ft	Yes
14	Primary Bedroom	10'8" x 13'8"	145 sq. ft	Yes

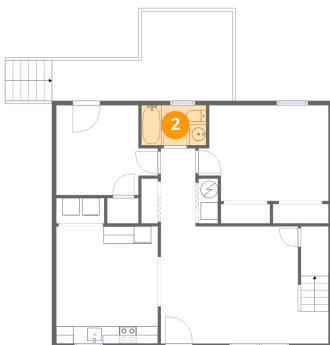
1 Floor 1 - Bedroom



Dimensions: 15'0" x 11'1"
Area: 166 sq. ft
Counted as living area: Yes

Heated: Yes
Finished: Yes
Enclosed: Yes
Contiguous: Yes
Permitted: Yes
Wet space: No
Addition: No
Conversion: No

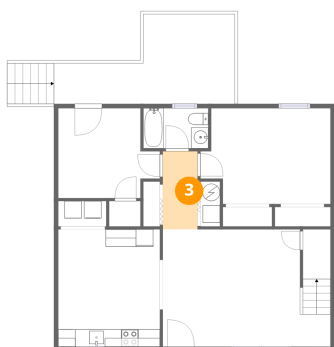
2 Floor 1 - Bath



Dimensions: 7'6" x 4'8"
Area: 35 sq. ft
Counted as living area: Yes

Heated: Yes
Finished: Yes
Enclosed: Yes
Contiguous: Yes
Permitted: Yes
Wet space: Yes
Addition: No
Conversion: No

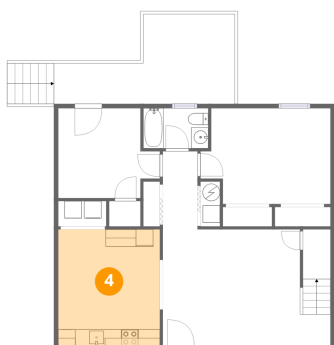
3 Floor 1 - Hall



Dimensions: 4'0" x 9'0"
Area: 36 sq. ft
Counted as living area: Yes

Heated: Yes
Finished: Yes
Enclosed: Yes
Contiguous: Yes
Permitted: Yes
Wet space: No
Addition: No
Conversion: No

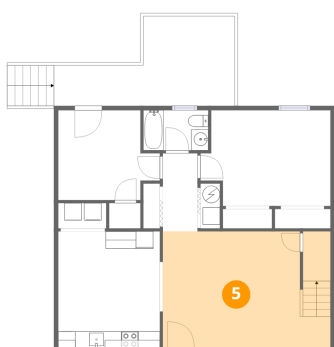
4 Floor 1 - Eat-in Kitchen



Dimensions: 11'9" x 13'6"
Area: 159 sq. ft
Counted as living area: Yes

Heated: Yes
Finished: Yes
Enclosed: Yes
Contiguous: Yes
Permitted: Yes
Wet space: No
Addition: No
Conversion: No

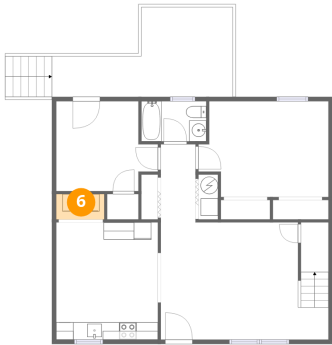
5 Floor 1 - Living Room



Dimensions: 19'4" x 13'6"
Area: 262 sq. ft
Counted as living area: Yes

Heated: Yes
Finished: Yes
Enclosed: Yes
Contiguous: Yes
Permitted: Yes
Wet space: No
Addition: No
Conversion: No

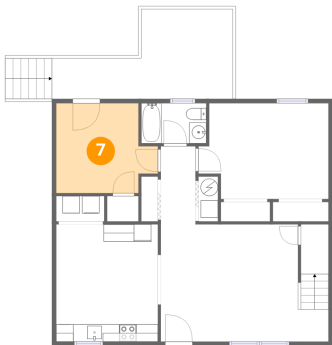
6 Floor 1 - Laundry



Dimensions: 5'6" x 2'11"
Area: 16 sq. ft
Counted as living area: Yes

Heated: Yes
Finished: Yes
Enclosed: Yes
Contiguous: Yes
Permitted: Yes
Wet space: No
Addition: No
Conversion: No

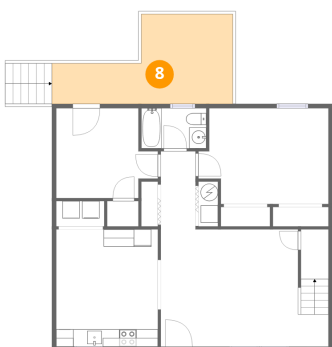
7 Floor 1 - Bedroom



Dimensions: 11'9" x 10'4"
Area: 122 sq. ft
Counted as living area: Yes

Heated: Yes
Finished: Yes
Enclosed: Yes
Contiguous: Yes
Permitted: Yes
Wet space: No
Addition: No
Conversion: No

8 Floor 1 - Deck



Dimensions: 20'10" x 10'4"
Area: 215 sq. ft
Counted as living area: No

Heated: No
Finished: No
Enclosed: No
Contiguous: Yes
Permitted: Yes
Wet space: No
Addition: No
Conversion: No

9 Floor 2 - Bath



Dimensions: 7'1" x 5'3"
Area: 38 sq. ft
Counted as living area: Yes

Heated: Yes
Finished: Yes
Enclosed: Yes
Contiguous: Yes
Permitted: Yes
Wet space: Yes
Addition: No
Conversion: No

10 Floor 2 - Hall



Dimensions: 6'8" x 3'0"
Area: 20 sq. ft
Counted as living area: Yes

Heated: Yes
Finished: Yes
Enclosed: Yes
Contiguous: Yes
Permitted: Yes
Wet space: No
Addition: No
Conversion: No

11 Floor 2 - Open To Below



Dimensions: 19'4" x 13'6"
Area: 262 sq. ft
Counted as living area: No

Heated: No
Finished: No
Enclosed: No
Contiguous: Yes
Permitted: No
Wet space: No
Addition: No
Conversion: No

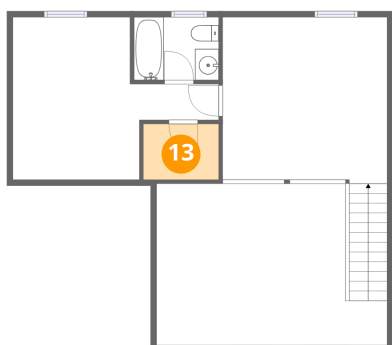
12 Floor 2 - Room



Dimensions: 13'10" x 14'0"
Area: 193 sq. ft
Counted as living area: Yes

Heated: Yes
Finished: Yes
Enclosed: Yes
Contiguous: Yes
Permitted: Yes
Wet space: No
Addition: No
Conversion: No

13 Floor 2 - W.I.C.



Dimensions: 6'4" x 4'8"
Area: 30 sq. ft
Counted as living area: Yes

Heated: Yes
Finished: Yes
Enclosed: Yes
Contiguous: Yes
Permitted: Yes
Wet space: No
Addition: No
Conversion: No

14 Floor 2 - Primary Bedroom



Dimensions: 10'8" x 13'8"
Area: 145 sq. ft
Counted as living area: Yes

Heated: Yes
Finished: Yes
Enclosed: Yes
Contiguous: Yes
Permitted: Yes
Wet space: No
Addition: No
Conversion: No