

Total Area: 1520 sq. ft

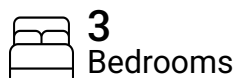
1st Floor: 1520 sq. ft

Excluded: Garage 365 sq. ft, Walls: 118 sq. ft

Property summary



1 Floors



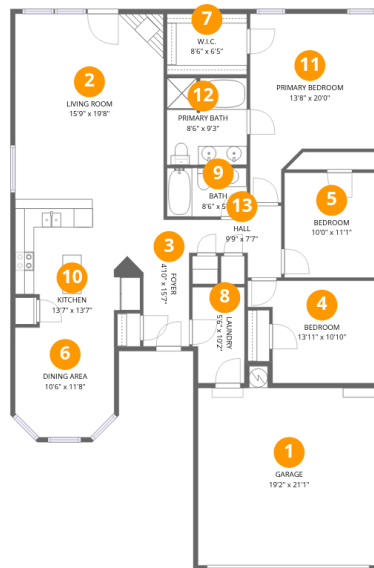
3 Bedrooms



2 Bathrooms



1 Garages



Room dimensions

Floor 1

Total: 1520sqft Excluded: 365sqft

#		Dimensions	sqft	Counted as living area
1	Garage	19'2" x 21'1"	405 sq. ft	No
2	Living Room	15'9" x 19'8"	309 sq. ft	Yes
3	Foyer	4'10" x 15'7"	76 sq. ft	Yes
4	Bedroom	13'11" x 10'10"	151 sq. ft	Yes
5	Bedroom	10'0" x 11'1"	111 sq. ft	Yes
6	Dining Area	10'6" x 11'8"	122 sq. ft	Yes
7	W.I.C.	8'6" x 6'5"	55 sq. ft	Yes
8	Laundry	5'6" x 10'2"	56 sq. ft	Yes
9	Bath	8'6" x 5'2"	44 sq. ft	Yes
10	Kitchen	13'7" x 13'7"	184 sq. ft	Yes
11	Primary Bedroom	13'8" x 20'0"	273 sq. ft	Yes

Home data report

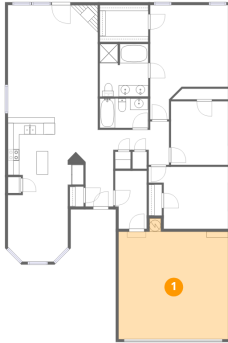
2031 Wildwood Dr,Forney,TX,US



#		Dimensions	sqft	Counted as living area
12	Primary Bath	8'6" x 9'3"	78 sq. ft	Yes
13	Hall	9'9" x 7'7"	74 sq. ft	Yes



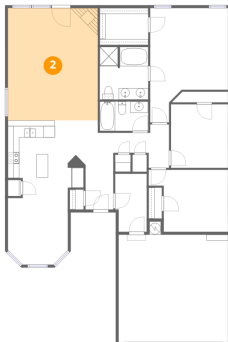
1 Floor 1 - Garage



Dimensions: 19'2" x 21'1"
Area: 405 sq. ft
Counted as living area: No

Heated: No
Finished: No
Enclosed: Yes
Contiguous: Yes
Permitted: Yes
Wet space: No
Addition: No
Conversion: No

2 Floor 1 - Living Room

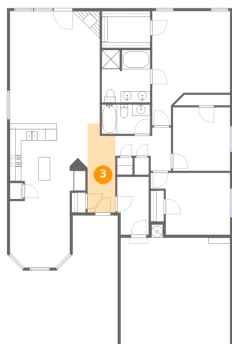


Dimensions: 15'9" x 19'8"
Area: 309 sq. ft
Counted as living area: Yes

Heated: Yes
Finished: Yes
Enclosed: Yes
Contiguous: Yes
Permitted: Yes
Wet space: No
Addition: No
Conversion: No



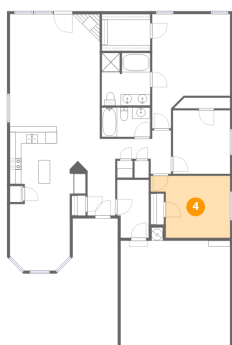
3 Floor 1 - Foyer



Dimensions: 4'10" x 15'7"
Area: 76 sq. ft
Counted as living area: Yes

Heated: Yes
Finished: Yes
Enclosed: Yes
Contiguous: Yes
Permitted: Yes
Wet space: No
Addition: No
Conversion: No

4 Floor 1 - Bedroom



Dimensions: 13'11" x 10'10"
Area: 151 sq. ft
Counted as living area: Yes

Heated: Yes
Finished: Yes
Enclosed: Yes
Contiguous: Yes
Permitted: Yes
Wet space: No
Addition: No
Conversion: No

5 Floor 1 - Bedroom

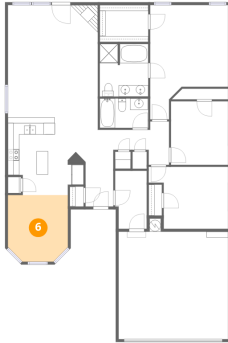


Dimensions: 10'0" x 11'1"
Area: 111 sq. ft
Counted as living area: Yes

Heated: Yes
Finished: Yes
Enclosed: Yes
Contiguous: Yes
Permitted: Yes
Wet space: No
Addition: No
Conversion: No



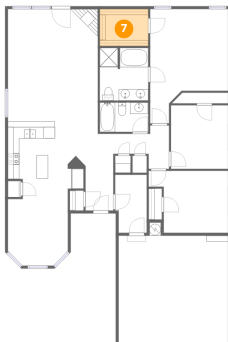
6 Floor 1 - Dining Area



Dimensions: 10'6" x 11'8"
Area: 122 sq. ft
Counted as living area: Yes

Heated: Yes
Finished: Yes
Enclosed: Yes
Contiguous: Yes
Permitted: Yes
Wet space: No
Addition: No
Conversion: No

7 Floor 1 - W.I.C.



Dimensions: 8'6" x 6'5"
Area: 55 sq. ft
Counted as living area: Yes

Heated: Yes
Finished: Yes
Enclosed: Yes
Contiguous: Yes
Permitted: Yes
Wet space: No
Addition: No
Conversion: No

8 Floor 1 - Laundry

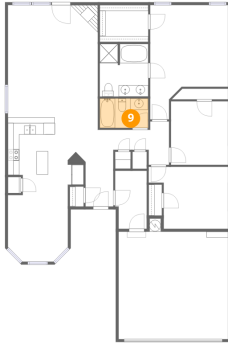


Dimensions: 5'6" x 10'2"
Area: 56 sq. ft
Counted as living area: Yes

Heated: Yes
Finished: Yes
Enclosed: Yes
Contiguous: Yes
Permitted: Yes
Wet space: No
Addition: No
Conversion: No



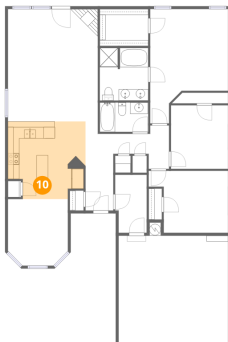
9 Floor 1 - Bath



Dimensions: 8'6" x 5'2"
Area: 44 sq. ft
Counted as living area: Yes

Heated: Yes
Finished: Yes
Enclosed: Yes
Contiguous: Yes
Permitted: Yes
Wet space: Yes
Addition: No
Conversion: No

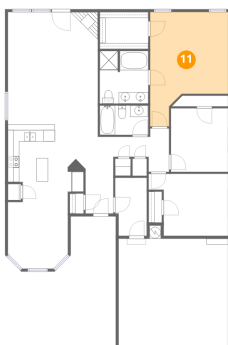
10 Floor 1 - Kitchen



Dimensions: 13'7" x 13'7"
Area: 184 sq. ft
Counted as living area: Yes

Heated: Yes
Finished: Yes
Enclosed: Yes
Contiguous: Yes
Permitted: Yes
Wet space: No
Addition: No
Conversion: No

11 Floor 1 - Primary Bedroom

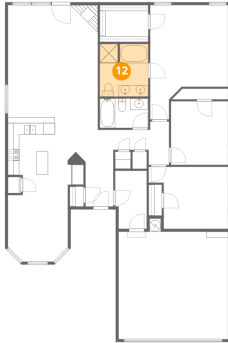


Dimensions: 13'8" x 20'0"
Area: 273 sq. ft
Counted as living area: Yes

Heated: Yes
Finished: Yes
Enclosed: Yes
Contiguous: Yes
Permitted: Yes
Wet space: No
Addition: No
Conversion: No



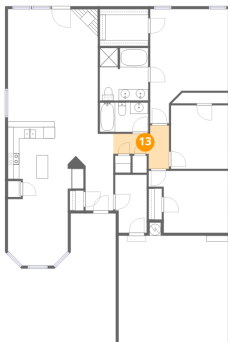
12 Floor 1 - Primary Bath



Dimensions: 8'6" x 9'3"
Area: 78 sq. ft
Counted as living area: Yes

Heated: Yes
Finished: Yes
Enclosed: Yes
Contiguous: Yes
Permitted: Yes
Wet space: Yes
Addition: No
Conversion: No

13 Floor 1 - Hall



Dimensions: 9'9" x 7'7"
Area: 74 sq. ft
Counted as living area: Yes

Heated: Yes
Finished: Yes
Enclosed: Yes
Contiguous: Yes
Permitted: Yes
Wet space: No
Addition: No
Conversion: No