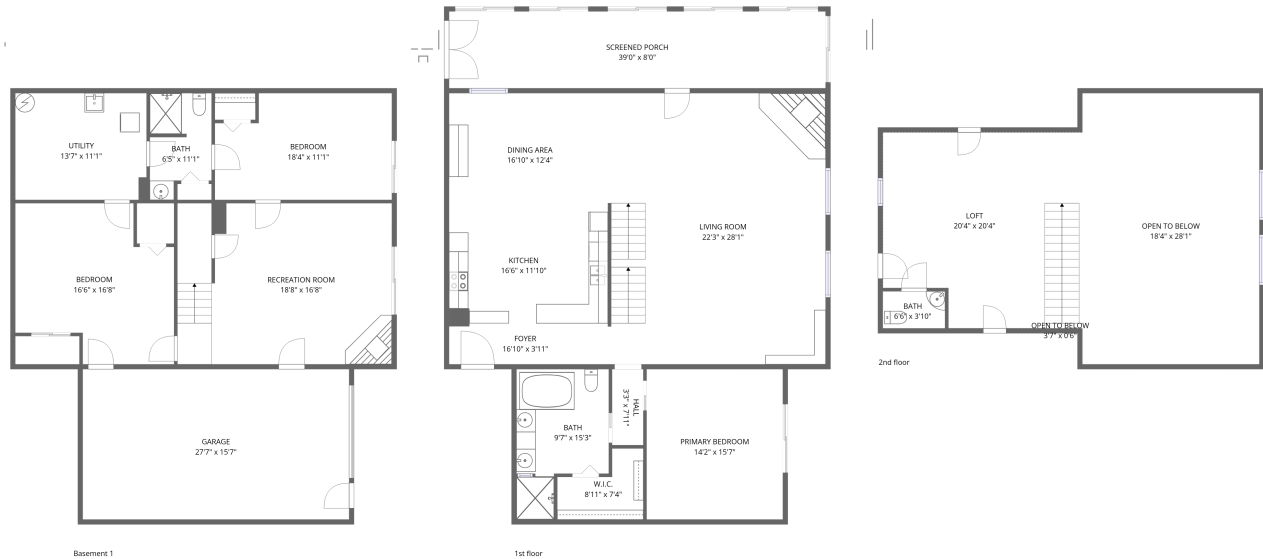


Home data report

**4167 Spring Creek Way, Sevierville, Sevier County, Tennessee,
United States, 37876**



Total Area: 3057 sq. ft

Basement 1: 1097 sq. ft, 1st Floor: 1542 sq. ft, 2nd Floor: 418 sq. ft

Excluded: Garage 431 sq. ft, Screened porch 311 sq. ft, Open to below 518 sq. ft, Walls: 278 sq. ft

Property summary



Scan captured on Thu, 22 Jan 2026 20:08:53 GMT

FLOOR PLAN CREATED BY CUBICASA APP. MEASUREMENTS DEEMED HIGHLY RELIABLE BUT NOT GUARANTEED.

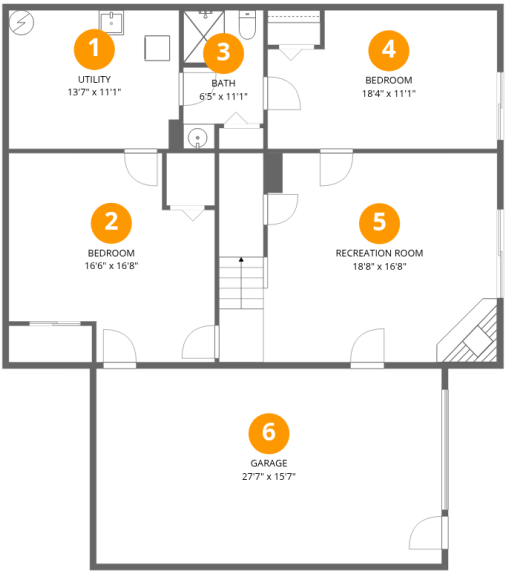
Home data report

4167 Spring Creek Way, Sevierville, Sevier County, Tennessee,
United States, 37876

 **1**
Half baths

 **1**
Garages

4167 Spring Creek Way, Sevierville, Sevier County, Tennessee,
United States, 37876



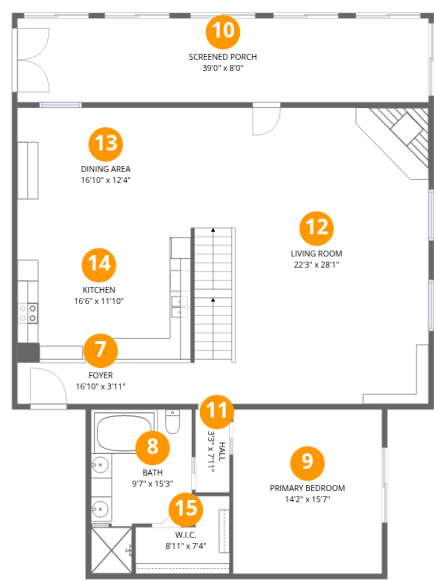
Room dimensions

Floor 1 Below grade Total:1097sqft Excluded: 431sqft

#		Dimensions	sqft	Counted as living area
1	Utility	13'7" x 11'1"	151 sq. ft	Yes
2	Bedroom	16'6" x 16'8"	275 sq. ft	Yes
3	Bath	6'5" x 11'1"	71 sq. ft	Yes
4	Bedroom	18'4" x 11'1"	203 sq. ft	Yes
5	Recreation Room	18'8" x 16'8"	311 sq. ft	Yes
6	Garage	27'7" x 15'7"	431 sq. ft	No

Home data report

4167 Spring Creek Way, Sevierville, Sevier County, Tennessee,
United States, 37876



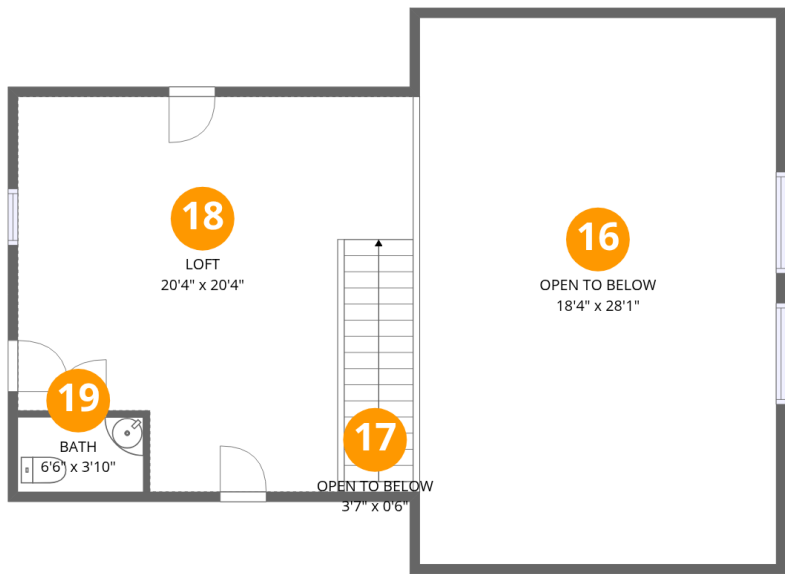
Room dimensions

Floor 2 Total:1542sqft Excluded: 311sqft

#		Dimensions	sqft	Counted as living area
7	Foyer	16'10" x 3'11"	65 sq. ft	Yes
8	Bath	9'7" x 15'3"	146 sq. ft	Yes
9	Primary Bedroom	14'2" x 15'7"	220 sq. ft	Yes
10	Screened Porch	39'0" x 8'0"	311 sq. ft	No
11	Hall	3'3" x 7'11"	26 sq. ft	Yes
12	Living Room	22'3" x 28'1"	625 sq. ft	Yes
13	Dining Area	16'10" x 12'4"	207 sq. ft	Yes
14	Kitchen	16'6" x 11'10"	195 sq. ft	Yes
15	W.I.C.	8'11" x 7'4"	66 sq. ft	Yes

Home data report

4167 Spring Creek Way, Sevierville, Sevier County, Tennessee,
United States, 37876



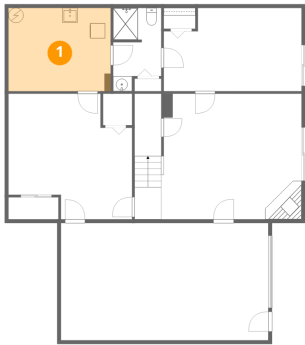
Room dimensions

Floor 3 Total:418sqft Excluded: 518sqft

#		Dimensions	sqft	Counted as living area
16	Open To Below	18'4" x 28'1"	516 sq. ft	No
17	Open To Below	3'7" x 0'6"	2 sq. ft	Yes
18	Loft	20'4" x 20'4"	413 sq. ft	Yes
19	Bath	6'6" x 3'10"	25 sq. ft	Yes

4167 Spring Creek Way, Sevierville, Sevier County, Tennessee,
United States, 37876

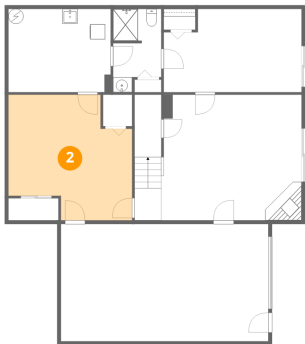
1 Floor 1 - Utility



Dimensions: 13'7" x 11'1"
Area: 151 sq. ft
Counted as living area: Yes

Heated: Yes
Finished: Yes
Enclosed: Yes
Contiguous: Yes
Permitted: Yes
Wet space: No
Addition: No
Conversion: No

2 Floor 1 - Bedroom

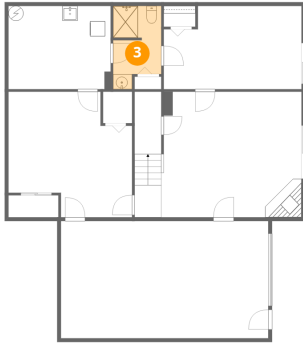


Dimensions: 16'6" x 16'8"
Area: 275 sq. ft
Counted as living area: Yes

Heated: Yes
Finished: Yes
Enclosed: Yes
Contiguous: Yes
Permitted: Yes
Wet space: No
Addition: No
Conversion: No

4167 Spring Creek Way, Sevierville, Sevier County, Tennessee,
United States, 37876

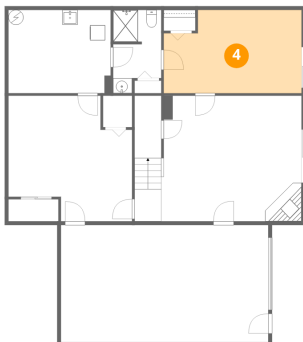
3 Floor 1 - Bath



Dimensions: 6'5" x 11'1"
Area: 71 sq. ft
Counted as living area: Yes

Heated: Yes
Finished: Yes
Enclosed: Yes
Contiguous: Yes
Permitted: Yes
Wet space: Yes
Addition: No
Conversion: No

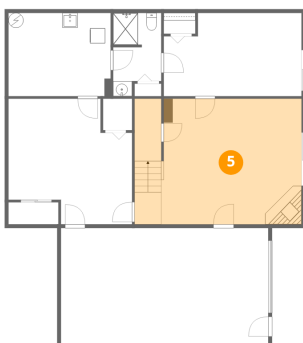
4 Floor 1 - Bedroom



Dimensions: 18'4" x 11'1"
Area: 203 sq. ft
Counted as living area: Yes

Heated: Yes
Finished: Yes
Enclosed: Yes
Contiguous: Yes
Permitted: Yes
Wet space: No
Addition: No
Conversion: No

5 Floor 1 - Recreation Room

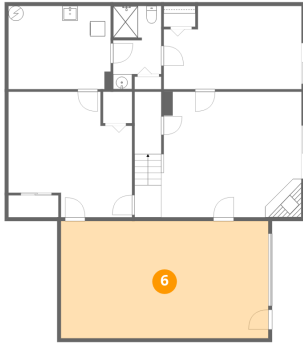


Dimensions: 18'8" x 16'8"
Area: 311 sq. ft
Counted as living area: Yes

Heated: Yes
Finished: Yes
Enclosed: Yes
Contiguous: Yes
Permitted: Yes
Wet space: No
Addition: No
Conversion: No

4167 Spring Creek Way, Sevierville, Sevier County, Tennessee,
United States, 37876

6 Floor 1 - Garage



Dimensions: 27'7" x 15'7"
Area: 431 sq. ft
Counted as living area: No

Heated: No
Finished: No
Enclosed: Yes
Contiguous: Yes
Permitted: Yes
Wet space: No
Addition: No
Conversion: No

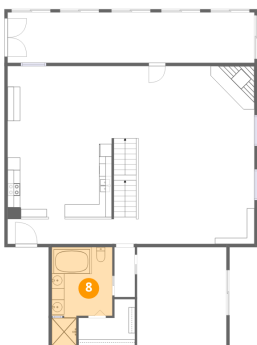
7 Floor 2 - Foyer



Dimensions: 16'10" x 3'11"
Area: 65 sq. ft
Counted as living area: Yes

Heated: Yes
Finished: Yes
Enclosed: Yes
Contiguous: Yes
Permitted: Yes
Wet space: No
Addition: No
Conversion: No

8 Floor 2 - Bath



Dimensions: 9'7" x 15'3"
Area: 146 sq. ft
Counted as living area: Yes

Heated: Yes
Finished: Yes
Enclosed: Yes
Contiguous: Yes
Permitted: Yes
Wet space: Yes
Addition: No
Conversion: No

4167 Spring Creek Way, Sevierville, Sevier County, Tennessee,
United States, 37876

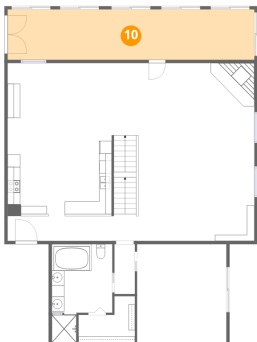
9 Floor 2 - Primary Bedroom



Dimensions: 14'2" x 15'7"
Area: 220 sq. ft
Counted as living area: Yes

Heated: Yes
Finished: Yes
Enclosed: Yes
Contiguous: Yes
Permitted: Yes
Wet space: No
Addition: No
Conversion: No

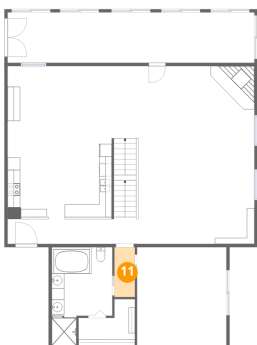
10 Floor 2 - Screened Porch



Dimensions: 39'0" x 8'0"
Area: 311 sq. ft
Counted as living area: No

Heated: No
Finished: No
Enclosed: No
Contiguous: Yes
Permitted: Yes
Wet space: No
Addition: No
Conversion: No

11 Floor 2 - Hall

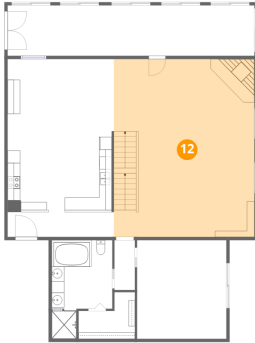


Dimensions: 3'3" x 7'11"
Area: 26 sq. ft
Counted as living area: Yes

Heated: Yes
Finished: Yes
Enclosed: Yes
Contiguous: Yes
Permitted: Yes
Wet space: No
Addition: No
Conversion: No

4167 Spring Creek Way, Sevierville, Sevier County, Tennessee,
United States, 37876

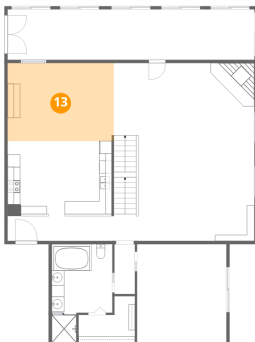
12 Floor 2 - Living Room



Dimensions: 22'3" x 28'1"
Area: 625 sq. ft
Counted as living area: Yes

Heated: Yes
Finished: Yes
Enclosed: Yes
Contiguous: Yes
Permitted: Yes
Wet space: No
Addition: No
Conversion: No

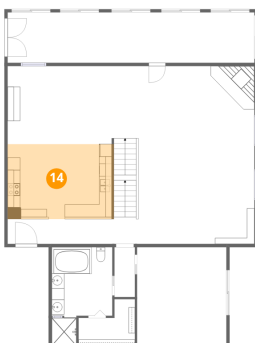
13 Floor 2 - Dining Area



Dimensions: 16'10" x 12'4"
Area: 207 sq. ft
Counted as living area: Yes

Heated: Yes
Finished: Yes
Enclosed: Yes
Contiguous: Yes
Permitted: Yes
Wet space: No
Addition: No
Conversion: No

14 Floor 2 - Kitchen



Dimensions: 16'6" x 11'10"
Area: 195 sq. ft
Counted as living area: Yes

Heated: Yes
Finished: Yes
Enclosed: Yes
Contiguous: Yes
Permitted: Yes
Wet space: No
Addition: No
Conversion: No

4167 Spring Creek Way, Sevierville, Sevier County, Tennessee,
United States, 37876

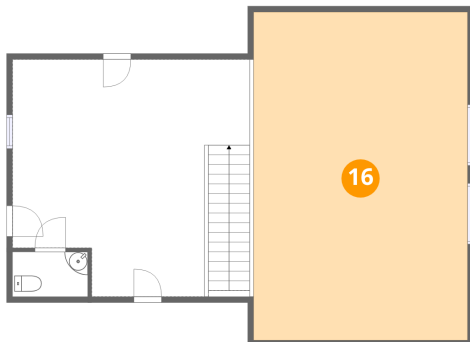
15 Floor 2 - W.I.C.



Dimensions: 8'11" x 7'4"
Area: 66 sq. ft
Counted as living area: Yes

Heated: Yes
Finished: Yes
Enclosed: Yes
Contiguous: Yes
Permitted: Yes
Wet space: No
Addition: No
Conversion: No

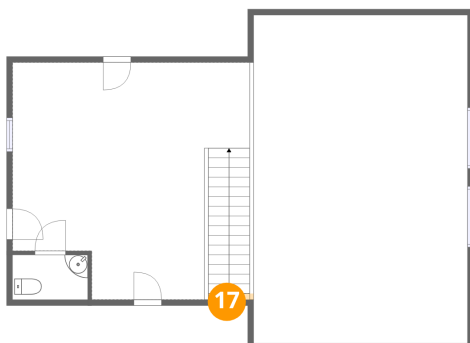
16 Floor 3 - Open To Below



Dimensions: 18'4" x 28'1"
Area: 516 sq. ft
Counted as living area: No

Heated: No
Finished: No
Enclosed: No
Contiguous: Yes
Permitted: No
Wet space: No
Addition: No
Conversion: No

17 Floor 3 - Open To Below

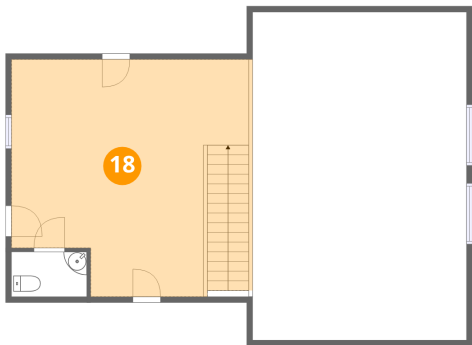


Dimensions: 3'7" x 0'6"
Area: 2 sq. ft
Counted as living area: Yes

Heated: No
Finished: No
Enclosed: No
Contiguous: Yes
Permitted: No
Wet space: No
Addition: No
Conversion: No

4167 Spring Creek Way, Sevierville, Sevier County, Tennessee,
United States, 37876

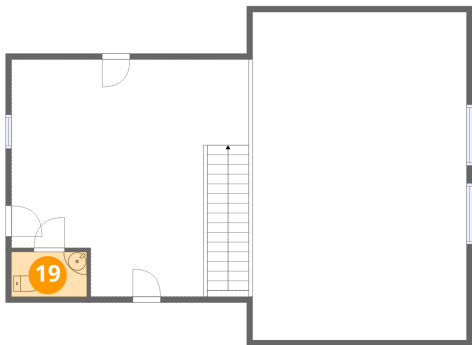
18 Floor 3 - Loft



Dimensions: 20'4" x 20'4"
Area: 413 sq. ft
Counted as living area: Yes

Heated: Yes
Finished: Yes
Enclosed: Yes
Contiguous: Yes
Permitted: Yes
Wet space: No
Addition: No
Conversion: No

19 Floor 3 - Bath



Dimensions: 6'6" x 3'10"
Area: 25 sq. ft
Counted as living area: Yes

Heated: Yes
Finished: Yes
Enclosed: Yes
Contiguous: Yes
Permitted: Yes
Wet space: Yes
Addition: No
Conversion: No