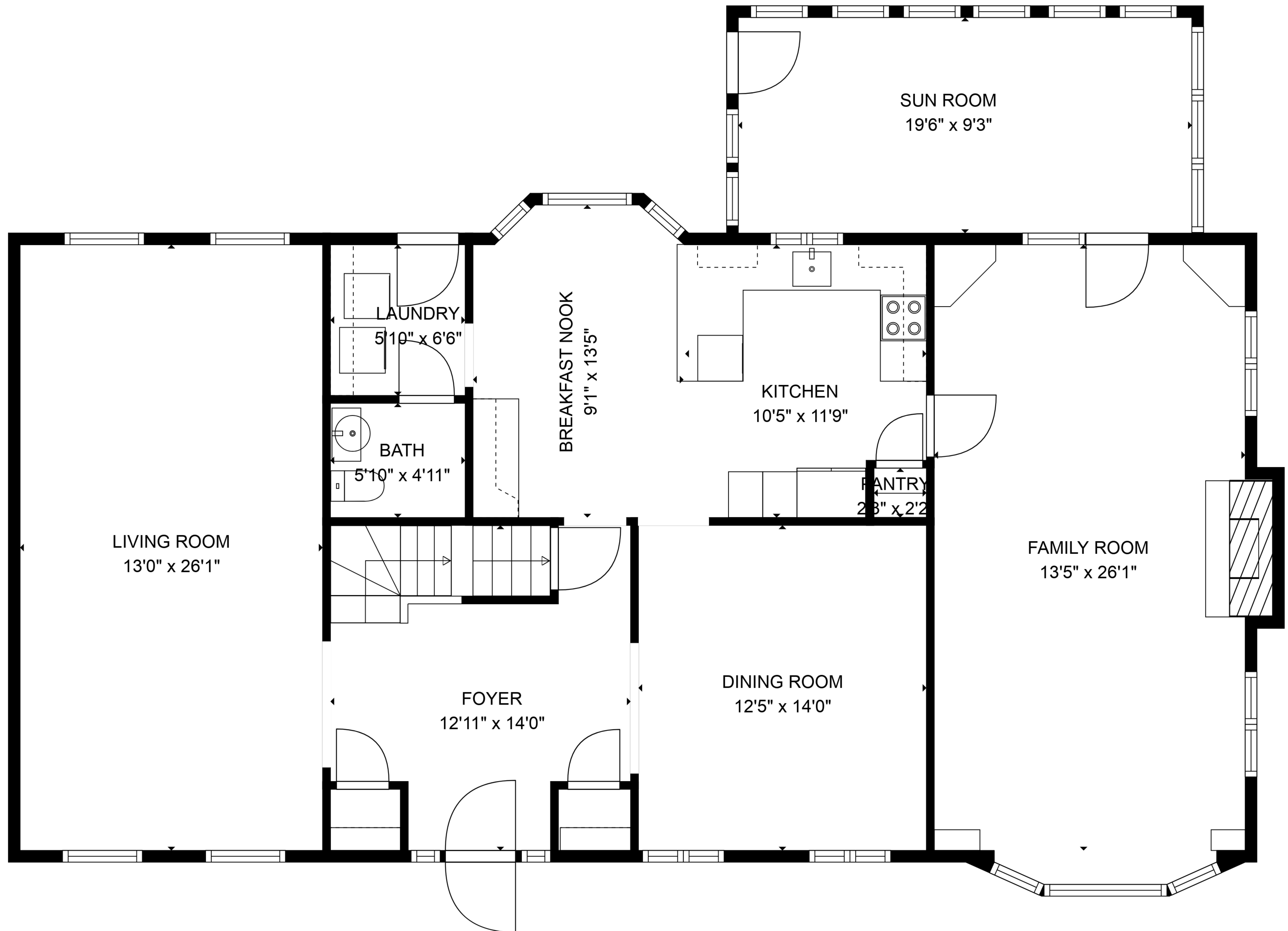


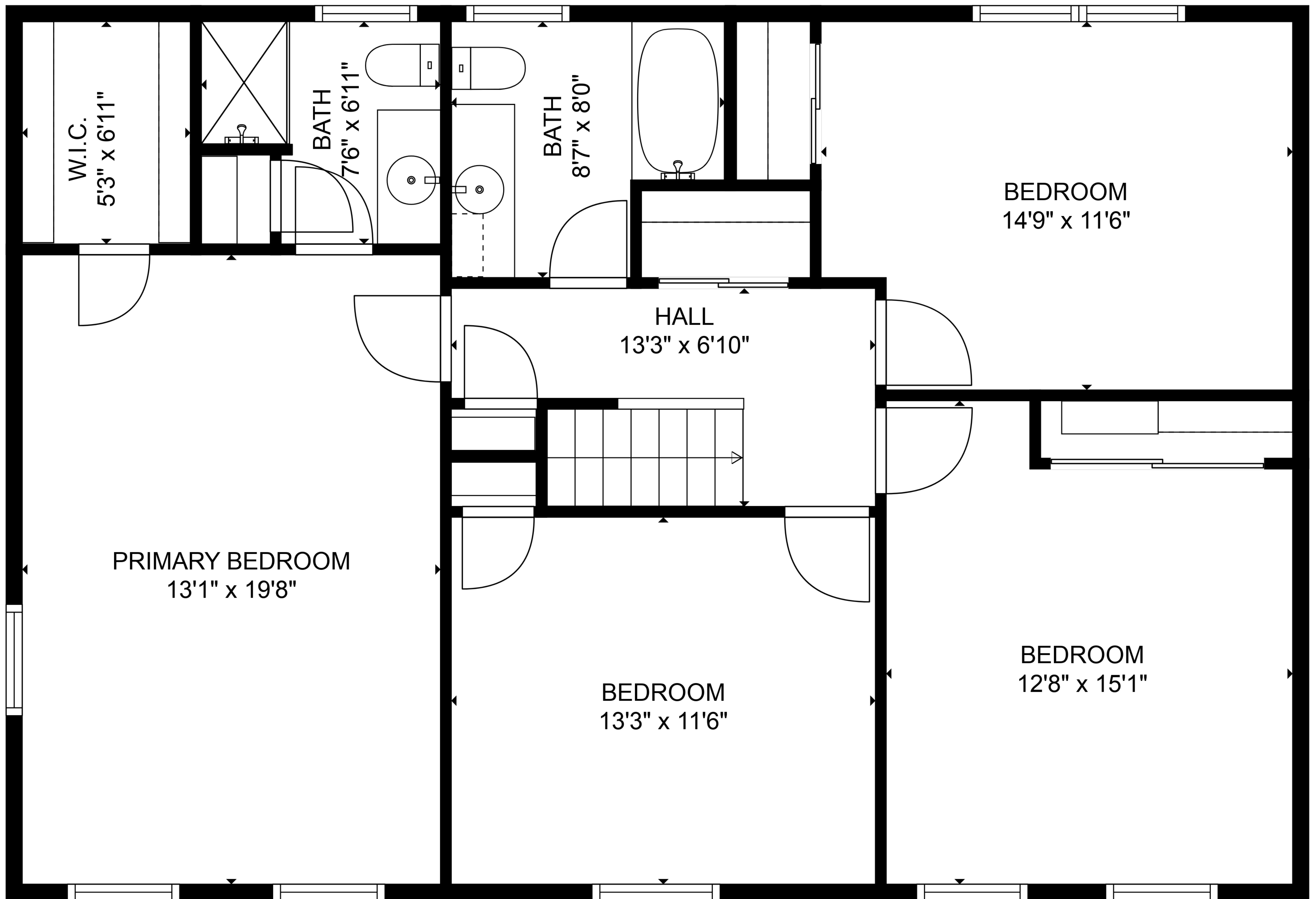
TOTAL: 3172 sq. ft

BELOW GROUND: 529 sq. ft, FLOOR 2: 1574 sq. ft, FLOOR 3: 1069 sq. ft
EXCLUDED AREAS: GARAGE: 657 sq. ft, ELECTRICAL ROOM: 174 sq. ft, BAY WINDOW: 13 sq. ft,
WALLS: 261 sq. ft



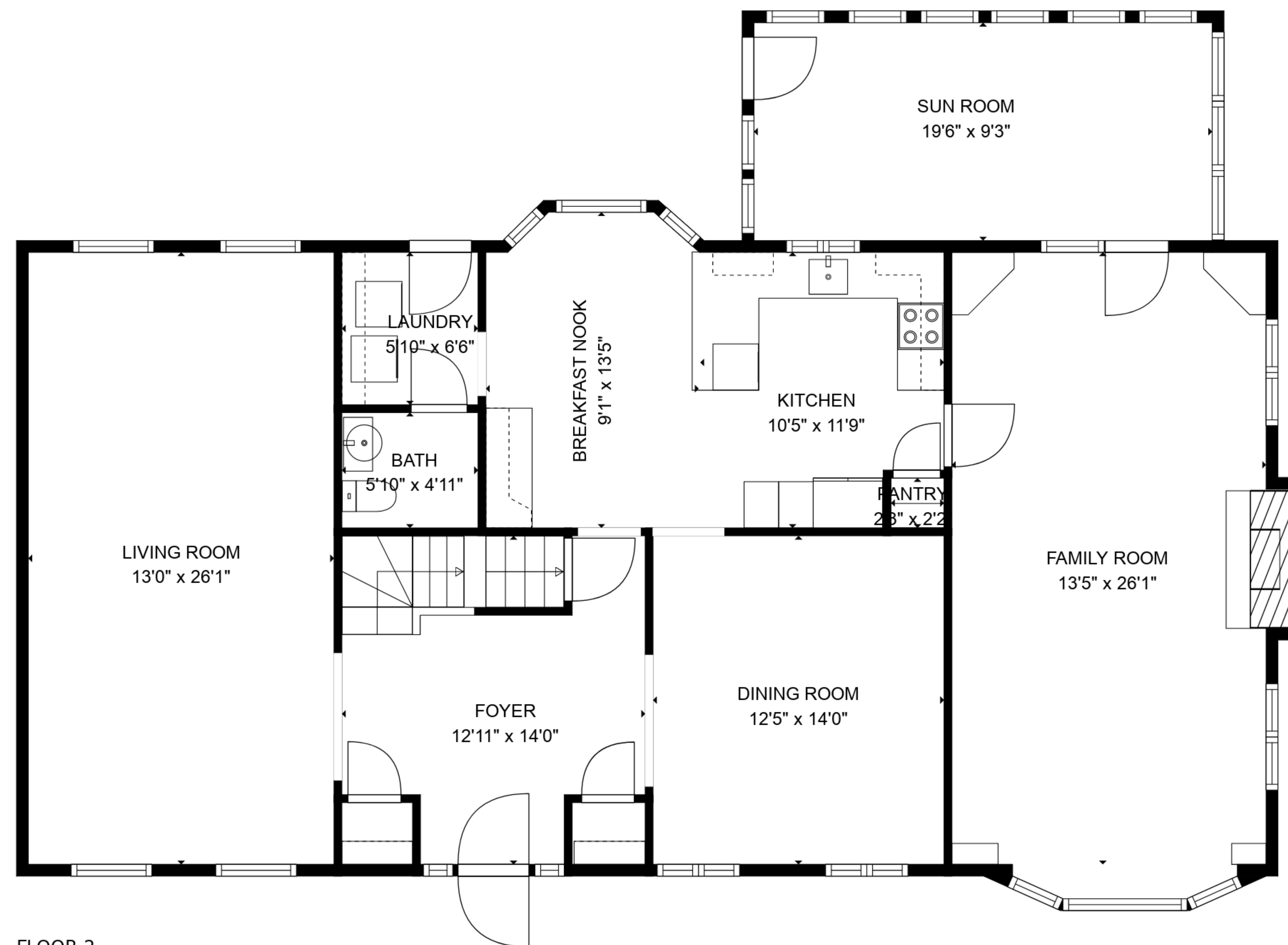
TOTAL: 3172 sq. ft

BELOW GROUND: 529 sq. ft, FLOOR 2: 1574 sq. ft, FLOOR 3: 1069 sq. ft
EXCLUDED AREAS: GARAGE: 657 sq. ft, ELECTRICAL ROOM: 174 sq. ft, BAY WINDOW: 13 sq. ft,
WALLS: 261 sq. ft

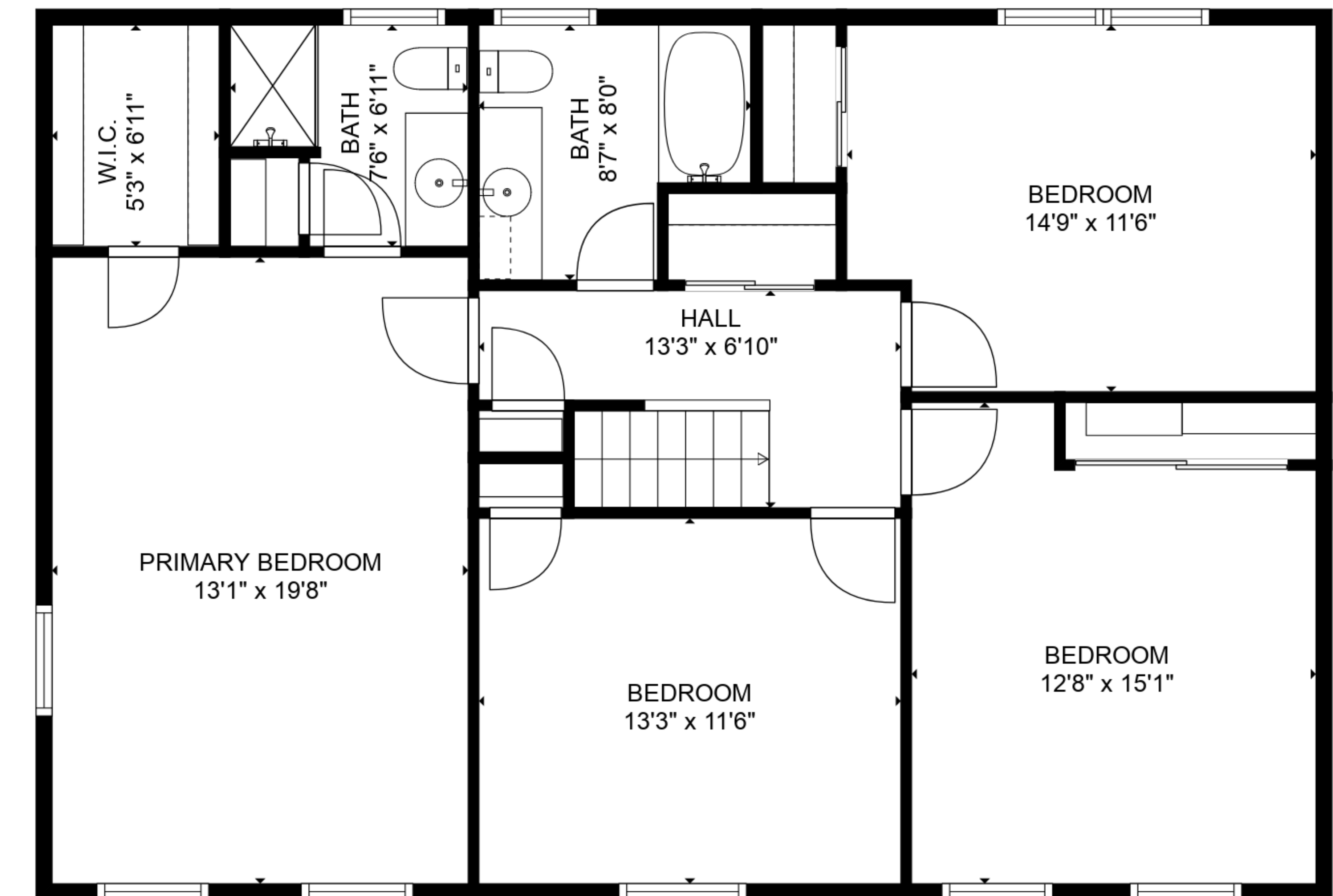


TOTAL: 3172 sq. ft

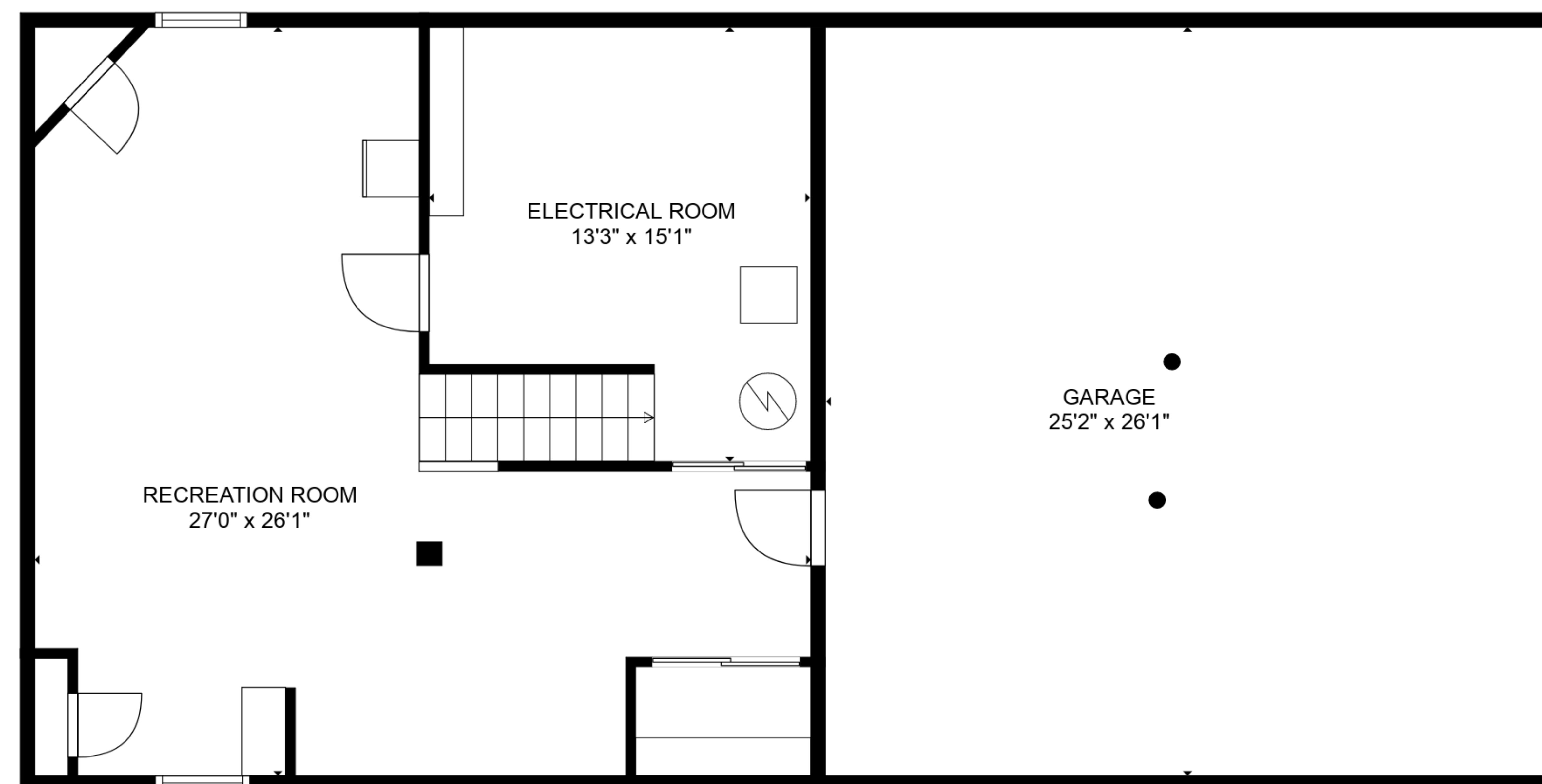
BELOW GROUND: 529 sq. ft, FLOOR 2: 1574 sq. ft, FLOOR 3: 1069 sq. ft
EXCLUDED AREAS: GARAGE: 657 sq. ft, ELECTRICAL ROOM: 174 sq. ft, BAY WINDOW: 13 sq. ft,
WALLS: 261 sq. ft



FLOOR 2



FLOOR 3



FLOOR 1

TOTAL: 3172 sq. ft

BELOW GROUND: 529 sq. ft, FLOOR 2: 1574 sq. ft, FLOOR 3: 1069 sq. ft

EXCLUDED AREAS: GARAGE: 657 sq. ft, ELECTRICAL ROOM: 174 sq. ft, BAY WINDOW: 13 sq. ft,
WALLS: 261 sq. ft