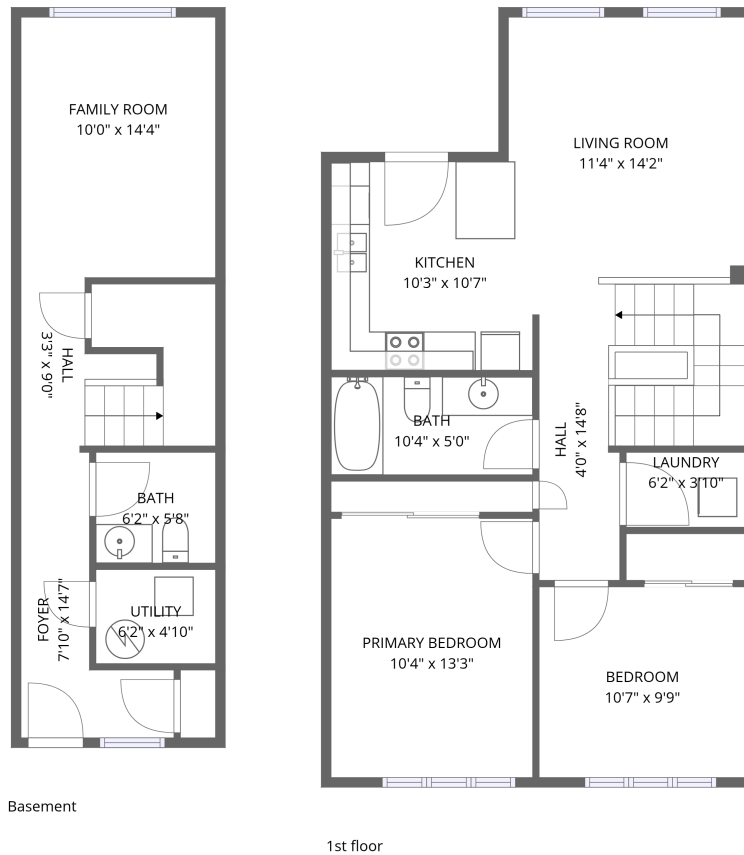


Home data report

24 Morrison Road, Kitchener, Ontario N2A 0L1, Canada, a13




Total Area: 1100 sq. ft

Basement: 339 sq. ft, 1st Floor: 761 sq. ft

Excluded: Utility 30 sq. ft, Walls: 79 sq. ft

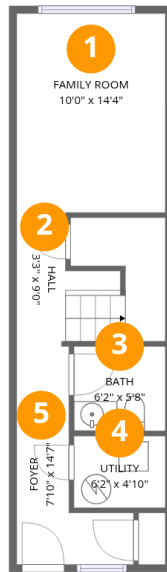
Property summary

 **2**
Floors

 **2**
Bedrooms

 **1**
Bathrooms

 **1**
Half baths



Room dimensions

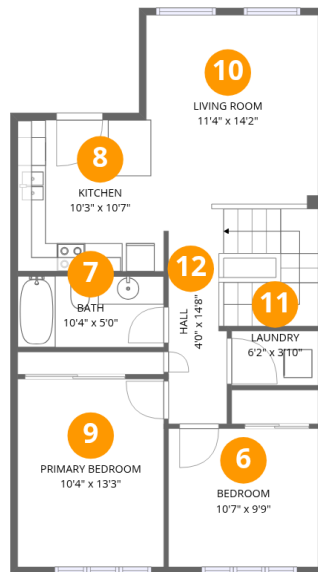
Floor 1 Below grade

Total:339sqft Excluded: 30sqft

#		Dimensions	sqft	Counted as living area
1	Family Room	10'0" x 14'4"	133 sq. ft	Yes
2	Hall	3'3" x 9'0"	82 sq. ft	Yes
3	Bath	6'2" x 5'8"	35 sq. ft	Yes
4	Utility	6'2" x 4'10"	30 sq. ft	No
5	Foyer	7'10" x 14'7"	66 sq. ft	Yes

Home data report

24 Morrison Road, Kitchener, Ontario N2A 0L1, Canada, a13



Room dimensions

Floor 2

Total:761sqft Excluded: 0sqft

#		Dimensions	sqft	Counted as living area
6	Bedroom	10'7" x 9'9"	103 sq. ft	Yes
7	Bath	10'4" x 5'0"	52 sq. ft	Yes
8	Kitchen	10'3" x 10'7"	106 sq. ft	Yes
9	Primary Bedroom	10'4" x 13'3"	137 sq. ft	Yes
10	Living Room	11'4" x 14'2"	155 sq. ft	Yes
11	Laundry	6'2" x 3'10"	23 sq. ft	Yes
12	Hall	4'0" x 14'8"	124 sq. ft	Yes

1 Floor 1 - Family Room



Dimensions: 10'0" x 14'4"
Area: 133 sq. ft
Counted as living area: Yes

Heated: Yes
Finished: Yes
Enclosed: Yes
Contiguous: Yes
Permitted: Yes
Wet space: No
Addition: No
Conversion: No

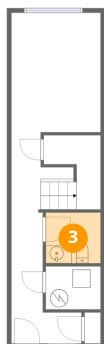
2 Floor 1 - Hall



Dimensions: 3'3" x 9'0"
Area: 82 sq. ft
Counted as living area: Yes

Heated: Yes
Finished: Yes
Enclosed: Yes
Contiguous: Yes
Permitted: Yes
Wet space: No
Addition: No
Conversion: No

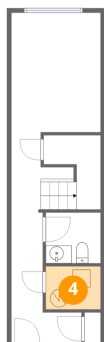
3 Floor 1 - Bath



Dimensions: 6'2" x 5'8"
Area: 35 sq. ft
Counted as living area: Yes

Heated: Yes
Finished: Yes
Enclosed: Yes
Contiguous: Yes
Permitted: Yes
Wet space: No
Addition: No
Conversion: No

4 Floor 1 - Utility



Dimensions: 6'2" x 4'10"
Area: 30 sq. ft
Counted as living area: No

Heated: Yes
Finished: No
Enclosed: Yes
Contiguous: Yes
Permitted: Yes
Wet space: No
Addition: No
Conversion: No

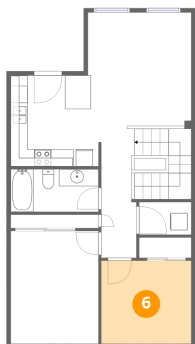
5 Floor 1 - Foyer



Dimensions: 7'10" x 14'7"
Area: 66 sq. ft
Counted as living area: Yes

Heated: Yes
Finished: Yes
Enclosed: Yes
Contiguous: Yes
Permitted: Yes
Wet space: No
Addition: No
Conversion: No

6 Floor 2 - Bedroom



Dimensions: 10'7" x 9'9"
Area: 103 sq. ft
Counted as living area: Yes

Heated: Yes
Finished: Yes
Enclosed: Yes
Contiguous: Yes
Permitted: Yes
Wet space: No
Addition: No
Conversion: No

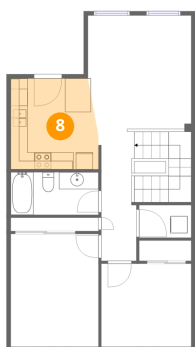
7 Floor 2 - Bath



Dimensions: 10'4" x 5'0"
Area: 52 sq. ft
Counted as living area: Yes

Heated: Yes
Finished: Yes
Enclosed: Yes
Contiguous: Yes
Permitted: Yes
Wet space: Yes
Addition: No
Conversion: No

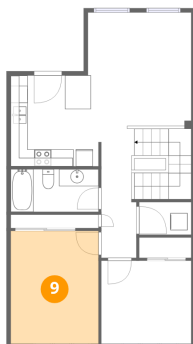
8 Floor 2 - Kitchen



Dimensions: 10'3" x 10'7"
Area: 106 sq. ft
Counted as living area: Yes

Heated: Yes
Finished: Yes
Enclosed: Yes
Contiguous: Yes
Permitted: Yes
Wet space: No
Addition: No
Conversion: No

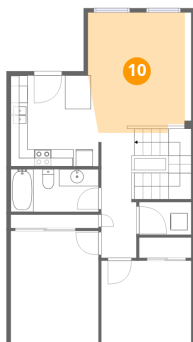
9 Floor 2 - Primary Bedroom



Dimensions: 10'4" x 13'3"
Area: 137 sq. ft
Counted as living area: Yes

Heated: Yes
Finished: Yes
Enclosed: Yes
Contiguous: Yes
Permitted: Yes
Wet space: No
Addition: No
Conversion: No

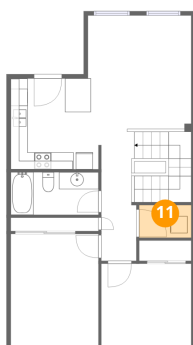
10 Floor 2 - Living Room



Dimensions: 11'4" x 14'2"
Area: 155 sq. ft
Counted as living area: Yes

Heated: Yes
Finished: Yes
Enclosed: Yes
Contiguous: Yes
Permitted: Yes
Wet space: No
Addition: No
Conversion: No

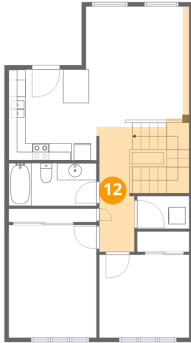
11 Floor 2 - Laundry



Dimensions: 6'2" x 3'10"
Area: 23 sq. ft
Counted as living area: Yes

Heated: Yes
Finished: Yes
Enclosed: Yes
Contiguous: Yes
Permitted: Yes
Wet space: No
Addition: No
Conversion: No

12 Floor 2 - Hall



Dimensions: 4'0" x 14'8"
Area: 124 sq. ft
Counted as living area: Yes

Heated: Yes
Finished: Yes
Enclosed: Yes
Contiguous: Yes
Permitted: Yes
Wet space: No
Addition: No
Conversion: No