

Home report

5217 Lipps Road, Farmington Lake, Cave Spring, Roanoke,
Roanoke County, Virginia, United States, 24018



Total Area: 1869 sq. ft

Floor 1: 527 sq. ft, Floor 2: 1342 sq. ft

Excluded: Garage 525 sq. ft, Covered patio 262 sq. ft, Deck 280 sq. ft, Fireplace 32 sq. ft,
Walls: 180 sq. ft

Property summary

 **2** Floors

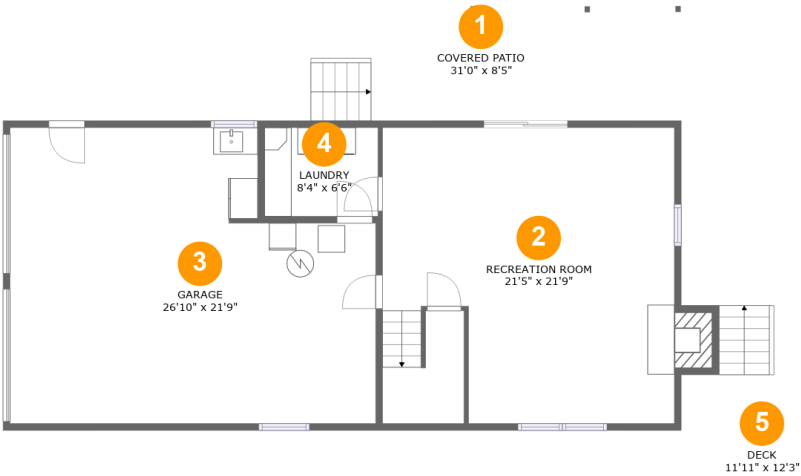
 **3** Bedrooms

 **2** Bathrooms

 **1** Garages

Home report

5217 Lipps Road, Farmington Lake, Cave Spring, Roanoke,
Roanoke County, Virginia, United States, 24018



Room dimensions

Floor 1 Total:527sqft Excluded: 947sqft

#		Max Dimensions	sqft	Included
1	Covered Patio	31'0" x 8'5"	262 sq. ft	No
2	Recreation Room	21'5" x 21'9"	474 sq. ft	Yes
3	Garage	26'10" x 21'9"	524 sq. ft	No
4	Laundry	8'4" x 6'6"	55 sq. ft	Yes
5	Deck	11'11" x 12'3"	146 sq. ft	No

Home report

5217 Lipps Road, Farmington Lake, Cave Spring, Roanoke,
Roanoke County, Virginia, United States, 24018



Room dimensions

Floor 2 Total:1342sqft Excluded: 152sqft

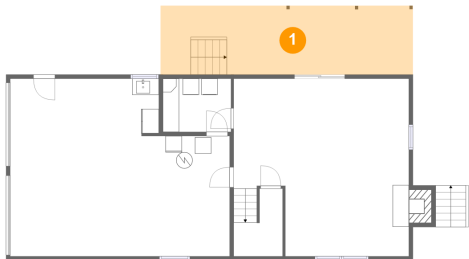
#		Max Dimensions	sqft	Included
6	Hall	10'4" x 3'2"	33 sq. ft	Yes
7	Dining Area	10'11" x 11'9"	128 sq. ft	Yes
8	Hall	2'10" x 3'6"	11 sq. ft	Yes
9	Kitchen	13'7" x 11'5"	155 sq. ft	Yes
10	Bedroom	9'9" x 11'4"	111 sq. ft	Yes
11	Family Room	11'2" x 19'3"	214 sq. ft	Yes
12	Foyer	6'0" x 4'1"	40 sq. ft	Yes
13	Deck	15'9" x 7'4"	117 sq. ft	No
14	Bath	4'10" x 6'6"	26 sq. ft	Yes
15	Bath	5'3" x 7'11"	41 sq. ft	Yes
16	Bedroom	17'10" x 11'4"	181 sq. ft	Yes

Home report

5217 Lipps Road, Farmington Lake, Cave Spring, Roanoke,
Roanoke County, Virginia, United States, 24018

#		Max Dimensions	sqft	Included
17	Primary Bedroom	14'0" x 11'5"	160 sq. ft	Yes
18	Living Room	15'2" x 10'0"	167 sq. ft	Yes
19	Deck	9'4" x 2'5"	17 sq. ft	No

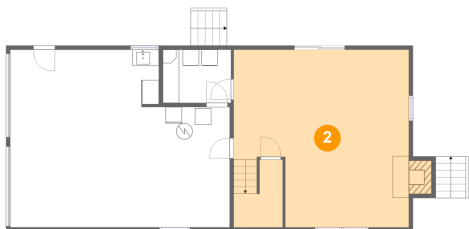
1 Floor 1 - Covered Patio



Max Dimensions: 31'0" x 8'5"
Calculated Area: 262 sq. ft
Included: No

Heated: No
Finished: Yes
Enclosed: No
Contiguous: Yes
Permitted: Yes
Wet space: No
Addition: No
Conversion: No

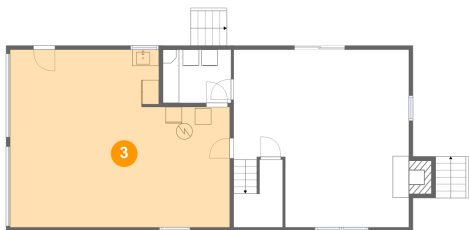
2 Floor 1 - Recreation Room



Max Dimensions: 21'5" x 21'9"
Calculated Area: 474 sq. ft
Included: Yes

Heated: Yes
Finished: Yes
Enclosed: Yes
Contiguous: Yes
Permitted: Yes
Wet space: No
Addition: No
Conversion: No

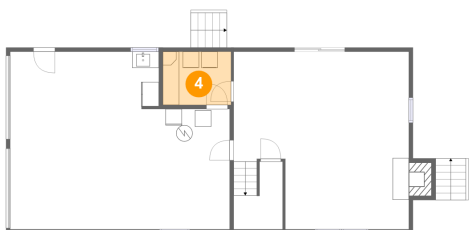
3 Floor 1 - Garage



Max Dimensions: 26'10" x 21'9"
Calculated Area: 524 sq. ft
Included: No

Heated: No
Finished: No
Enclosed: Yes
Contiguous: Yes
Permitted: Yes
Wet space: No
Addition: No
Conversion: No

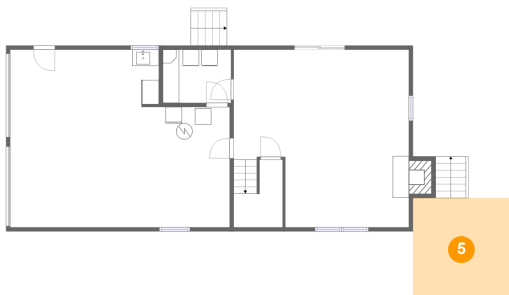
4 Floor 1 - Laundry



Max Dimensions: 8'4" x 6'6"
Calculated Area: 55 sq. ft
Included: Yes

Heated: Yes
Finished: Yes
Enclosed: Yes
Contiguous: Yes
Permitted: Yes
Wet space: No
Addition: No
Conversion: No

5 Floor 1 - Deck

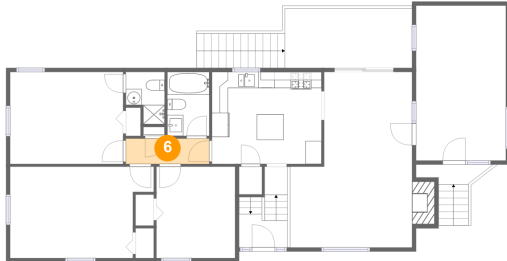


Max Dimensions: 11'11" x 12'3"
Calculated Area: 146 sq. ft
Included: No

Heated: No
Finished: Yes
Enclosed: No
Contiguous: Yes
Permitted: Yes
Wet space: No
Addition: No
Conversion: No

5217 Lipps Road, Farmington Lake, Cave Spring, Roanoke,
Roanoke County, Virginia, United States, 24018

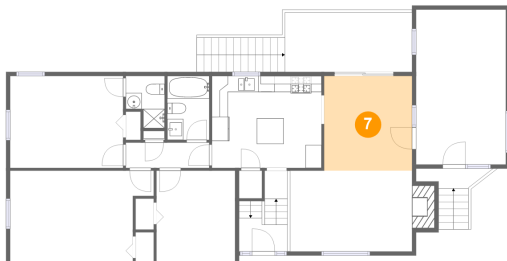
6 Floor 2 - Hall



Max Dimensions: 10'4" x 3'2"
Calculated Area: 33 sq. ft
Included: Yes

Heated: Yes
Finished: Yes
Enclosed: Yes
Contiguous: Yes
Permitted: Yes
Wet space: No
Addition: No
Conversion: No

7 Floor 2 - Dining Area



Max Dimensions: 10'11" x 11'9"
Calculated Area: 128 sq. ft
Included: Yes

Heated: Yes
Finished: Yes
Enclosed: Yes
Contiguous: Yes
Permitted: Yes
Wet space: No
Addition: No
Conversion: No

8 Floor 2 - Hall



Max Dimensions: 2'10" x 3'6"
Calculated Area: 11 sq. ft
Included: Yes

Heated: Yes
Finished: Yes
Enclosed: Yes
Contiguous: Yes
Permitted: Yes
Wet space: No
Addition: No
Conversion: No

5217 Lipps Road, Farmington Lake, Cave Spring, Roanoke,
Roanoke County, Virginia, United States, 24018

9 Floor 2 - Kitchen



Max Dimensions: 13'7" x 11'5"
Calculated Area: 155 sq. ft
Included: Yes

Heated: Yes
Finished: Yes
Enclosed: Yes
Contiguous: Yes
Permitted: Yes
Wet space: No
Addition: No
Conversion: No

10 Floor 2 - Bedroom



Max Dimensions: 9'9" x 11'4"
Calculated Area: 111 sq. ft
Included: Yes

Heated: Yes
Finished: Yes
Enclosed: Yes
Contiguous: Yes
Permitted: Yes
Wet space: No
Addition: No
Conversion: No

11 Floor 2 - Family Room



Max Dimensions: 11'2" x 19'3"
Calculated Area: 214 sq. ft
Included: No

Heated: Yes
Finished: Yes
Enclosed: Yes
Contiguous: No
Permitted: Yes
Wet space: No
Addition: No
Conversion: No

5217 Lipps Road, Farmington Lake, Cave Spring, Roanoke,
Roanoke County, Virginia, United States, 24018

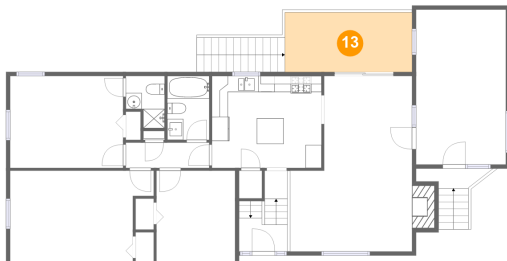
12 Floor 2 - Foyer



Max Dimensions: 6'0" x 4'1"
Calculated Area: 40 sq. ft
Included: Yes

Heated: Yes
Finished: Yes
Enclosed: Yes
Contiguous: Yes
Permitted: Yes
Wet space: No
Addition: No
Conversion: No

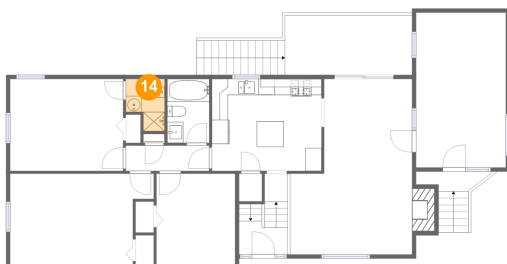
13 Floor 2 - Deck



Max Dimensions: 15'9" x 7'4"
Calculated Area: 117 sq. ft
Included: No

Heated: No
Finished: Yes
Enclosed: No
Contiguous: Yes
Permitted: Yes
Wet space: No
Addition: No
Conversion: No

14 Floor 2 - Bath



Max Dimensions: 4'10" x 6'6"
Calculated Area: 26 sq. ft
Included: Yes

Heated: Yes
Finished: Yes
Enclosed: Yes
Contiguous: Yes
Permitted: Yes
Wet space: Yes
Addition: No
Conversion: No

5217 Lipps Road, Farmington Lake, Cave Spring, Roanoke,
Roanoke County, Virginia, United States, 24018

15 Floor 2 - Bath



Max Dimensions: 5'3" x 7'11"
Calculated Area: 41 sq. ft
Included: Yes

Heated: Yes
Finished: Yes
Enclosed: Yes
Contiguous: Yes
Permitted: Yes
Wet space: Yes
Addition: No
Conversion: No

16 Floor 2 - Bedroom



Max Dimensions: 17'10" x 11'4"
Calculated Area: 181 sq. ft
Included: Yes

Heated: Yes
Finished: Yes
Enclosed: Yes
Contiguous: Yes
Permitted: Yes
Wet space: No
Addition: No
Conversion: No

17 Floor 2 - Primary Bedroom

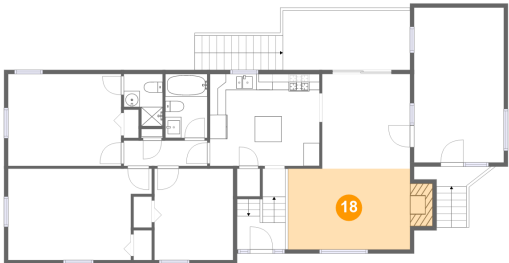


Max Dimensions: 14'0" x 11'5"
Calculated Area: 160 sq. ft
Included: Yes

Heated: Yes
Finished: Yes
Enclosed: Yes
Contiguous: Yes
Permitted: Yes
Wet space: No
Addition: No
Conversion: No

5217 Lipps Road, Farmington Lake, Cave Spring, Roanoke,
Roanoke County, Virginia, United States, 24018

18 Floor 2 - Living Room



Max Dimensions: 15'2" x 10'0"
Calculated Area: 167 sq. ft
Included: Yes

Heated: Yes
Finished: Yes
Enclosed: Yes
Contiguous: Yes
Permitted: Yes
Wet space: No
Addition: No
Conversion: No

19 Floor 2 - Deck



Max Dimensions: 9'4" x 2'5"
Calculated Area: 17 sq. ft
Included: No

Heated: No
Finished: Yes
Enclosed: No
Contiguous: Yes
Permitted: Yes
Wet space: No
Addition: No
Conversion: No