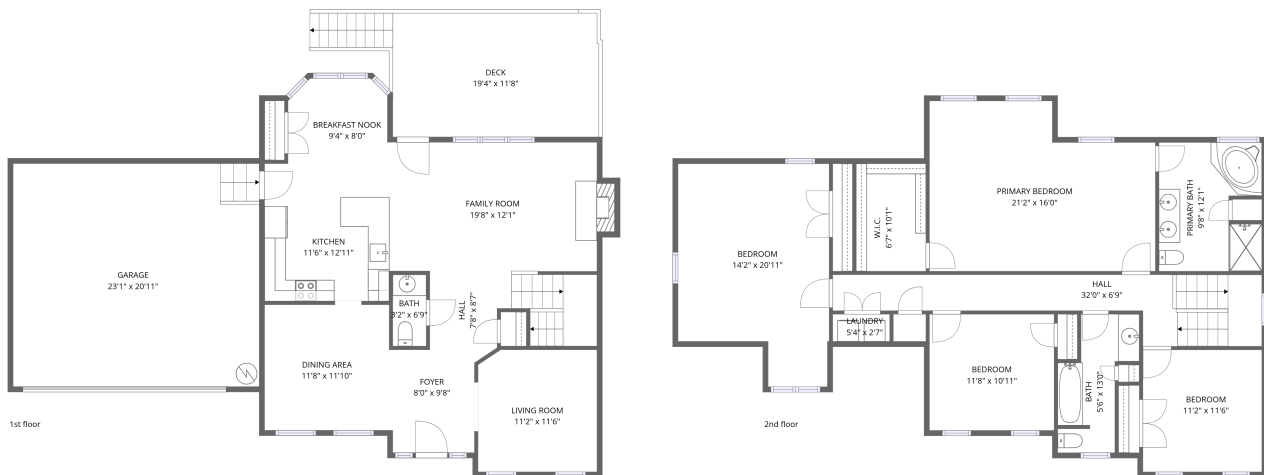


Home data report

**6300 Arbor Ridge Drive, Chester, Chesterfield County, Virginia,
United States, 23831**



Total Area: 2337 sq. ft

1st Floor: 969 sq. ft, 2nd Floor: 1368 sq. ft

Excluded: Garage 485 sq. ft, Deck 225 sq. ft, Fireplace 9 sq. ft, Walls: 195 sq. ft

Property summary


 **2**
Floors

 **4**
Bedrooms

 **2**
Bathrooms

Home data report

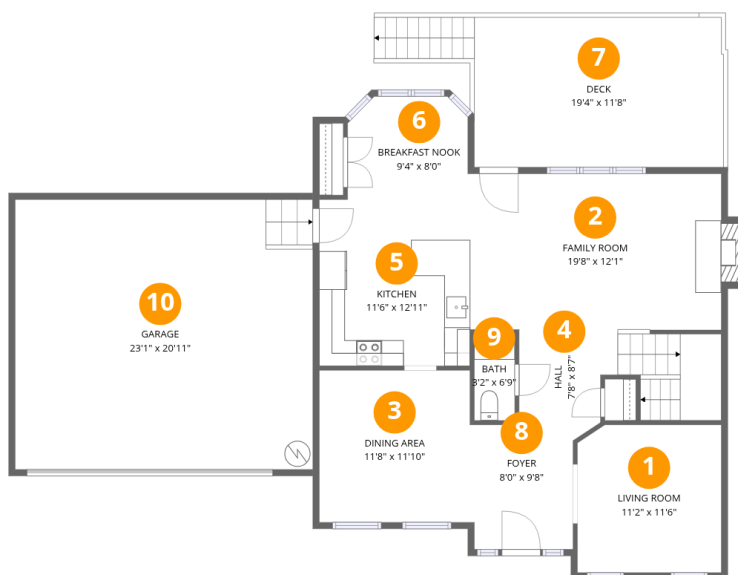
**6300 Arbor Ridge Drive, Chester, Chesterfield County, Virginia,
United States, 23831**

 **1**
Half baths

 **1**
Garages

Home data report

6300 Arbor Ridge Drive, Chester, Chesterfield County, Virginia, United States, 23831



Room dimensions

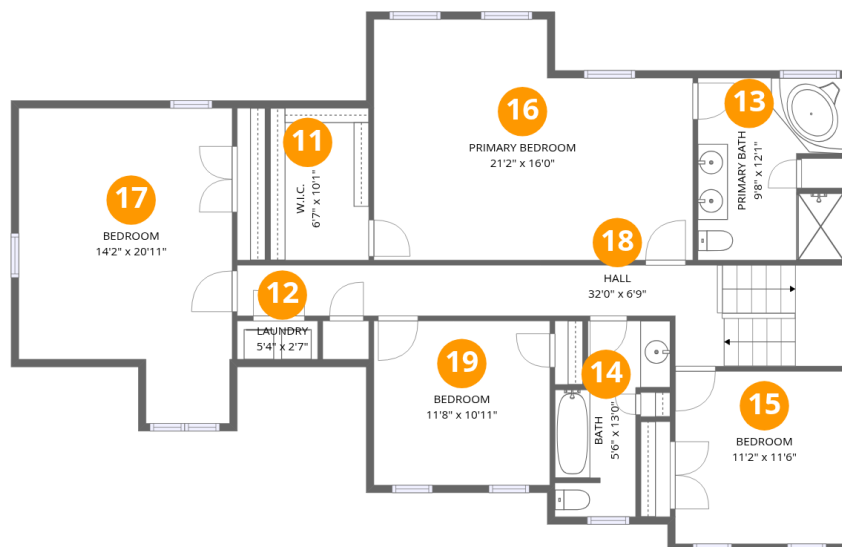
Floor 1

Total:969sqft

Excluded: 719sqft

#		Dimensions	sqft	Counted as living area
1	Living Room	11'2" x 11'6"	127 sq. ft	Yes
2	Family Room	19'8" x 12'1"	247 sq. ft	Yes
3	Dining Area	11'8" x 11'10"	138 sq. ft	Yes
4	Hall	7'8" x 8'7"	104 sq. ft	Yes
5	Kitchen	11'6" x 12'11"	149 sq. ft	Yes
6	Breakfast Nook	9'4" x 8'0"	71 sq. ft	Yes
7	Deck	19'4" x 11'8"	225 sq. ft	No
8	Foyer	8'0" x 9'8"	74 sq. ft	Yes
9	Bath	3'2" x 6'9"	21 sq. ft	Yes
10	Garage	23'1" x 20'11"	485 sq. ft	No

6300 Arbor Ridge Drive, Chester, Chesterfield County, Virginia, United States, 23831



Room dimensions

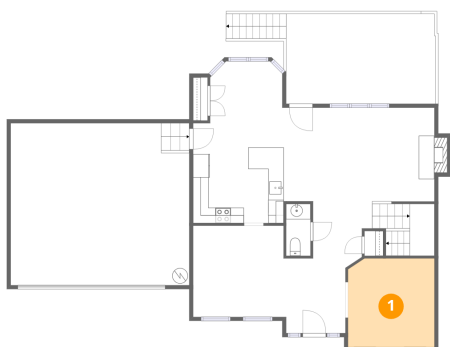
Floor 2

Total:1368sqft Excluded: 0sqft

#		Dimensions	sqft	Counted as living area
11	W.I.C.	6'7" x 10'1"	66 sq. ft	Yes
12	Laundry	5'4" x 2'7"	14 sq. ft	Yes
13	Primary Bath	9'8" x 12'1"	109 sq. ft	Yes
14	Bath	5'6" x 13'0"	69 sq. ft	Yes
15	Bedroom	11'2" x 11'6"	128 sq. ft	Yes
16	Primary Bedroom	21'2" x 16'0"	302 sq. ft	Yes
17	Bedroom	14'2" x 20'11"	261 sq. ft	Yes
18	Hall	32'0" x 6'9"	173 sq. ft	Yes
19	Bedroom	11'8" x 10'11"	128 sq. ft	Yes

6300 Arbor Ridge Drive, Chester, Chesterfield County, Virginia,
United States, 23831

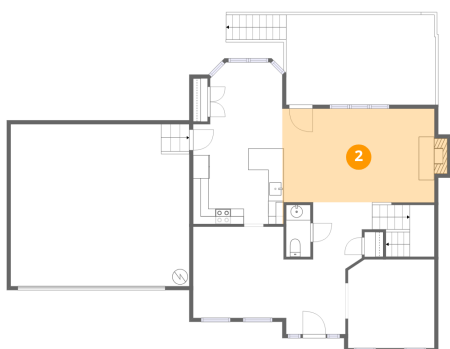
1 Floor 1 - Living Room



Dimensions: 11'2" x 11'6"
Area: 127 sq. ft
Counted as living area: Yes

Heated: Yes
Finished: Yes
Enclosed: Yes
Contiguous: Yes
Permitted: Yes
Wet space: No
Addition: No
Conversion: No

2 Floor 1 - Family Room

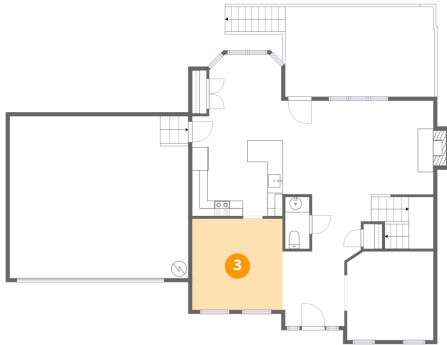


Dimensions: 19'8" x 12'1"
Area: 247 sq. ft
Counted as living area: Yes

Heated: Yes
Finished: Yes
Enclosed: Yes
Contiguous: Yes
Permitted: Yes
Wet space: No
Addition: No
Conversion: No

6300 Arbor Ridge Drive, Chester, Chesterfield County, Virginia,
United States, 23831

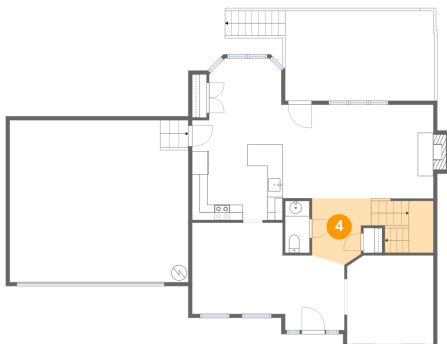
3 Floor 1 - Dining Area



Dimensions: 11'8" x 11'10"
Area: 138 sq. ft
Counted as living area: Yes

Heated: Yes
Finished: Yes
Enclosed: Yes
Contiguous: Yes
Permitted: Yes
Wet space: No
Addition: No
Conversion: No

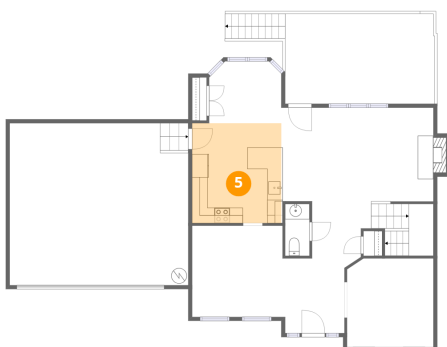
4 Floor 1 - Hall



Dimensions: 7'8" x 8'7"
Area: 104 sq. ft
Counted as living area: Yes

Heated: Yes
Finished: Yes
Enclosed: Yes
Contiguous: Yes
Permitted: Yes
Wet space: No
Addition: No
Conversion: No

5 Floor 1 - Kitchen



Dimensions: 11'6" x 12'11"
Area: 149 sq. ft
Counted as living area: Yes

Heated: Yes
Finished: Yes
Enclosed: Yes
Contiguous: Yes
Permitted: Yes
Wet space: No
Addition: No
Conversion: No

6300 Arbor Ridge Drive, Chester, Chesterfield County, Virginia,
United States, 23831

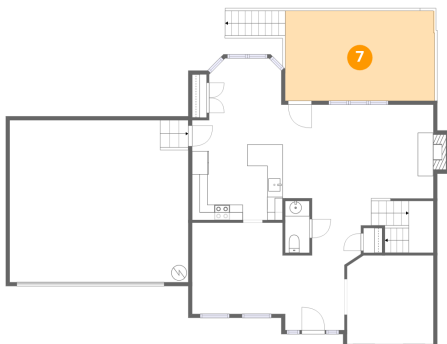
6 Floor 1 - Breakfast Nook



Dimensions: 9'4" x 8'0"
Area: 71 sq. ft
Counted as living area: Yes

Heated: Yes
Finished: Yes
Enclosed: Yes
Contiguous: Yes
Permitted: Yes
Wet space: No
Addition: No
Conversion: No

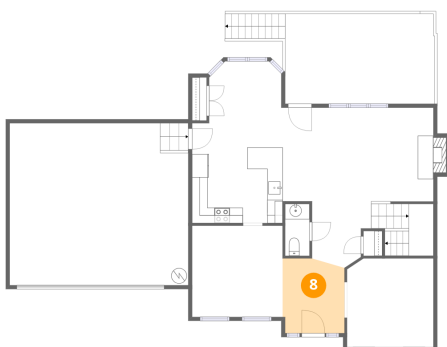
7 Floor 1 - Deck



Dimensions: 19'4" x 11'8"
Area: 225 sq. ft
Counted as living area: No

Heated: No
Finished: No
Enclosed: No
Contiguous: Yes
Permitted: Yes
Wet space: No
Addition: No
Conversion: No

8 Floor 1 - Foyer

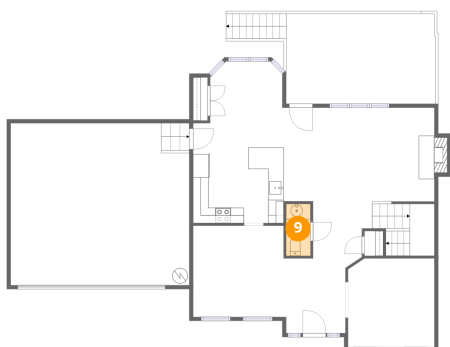


Dimensions: 8'0" x 9'8"
Area: 74 sq. ft
Counted as living area: Yes

Heated: Yes
Finished: Yes
Enclosed: Yes
Contiguous: Yes
Permitted: Yes
Wet space: No
Addition: No
Conversion: No

6300 Arbor Ridge Drive, Chester, Chesterfield County, Virginia,
United States, 23831

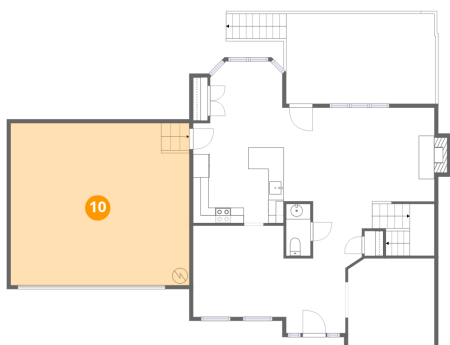
9 Floor 1 - Bath



Dimensions: 3'2" x 6'9"
Area: 21 sq. ft
Counted as living area: Yes

Heated: Yes
Finished: Yes
Enclosed: Yes
Contiguous: Yes
Permitted: Yes
Wet space: Yes
Addition: No
Conversion: No

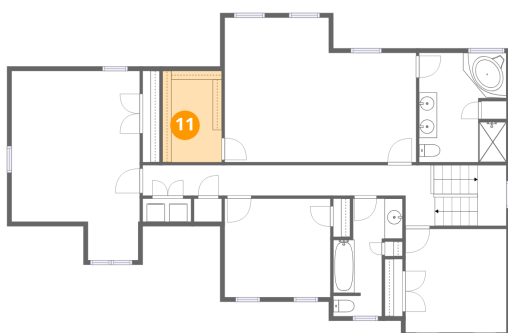
10 Floor 1 - Garage



Dimensions: 23'1" x 20'11"
Area: 485 sq. ft
Counted as living area: No

Heated: No
Finished: No
Enclosed: Yes
Contiguous: Yes
Permitted: Yes
Wet space: No
Addition: No
Conversion: No

11 Floor 2 - W.I.C.

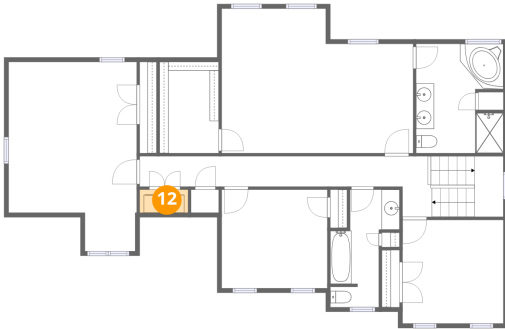


Dimensions: 6'7" x 10'1"
Area: 66 sq. ft
Counted as living area: Yes

Heated: Yes
Finished: Yes
Enclosed: Yes
Contiguous: Yes
Permitted: Yes
Wet space: No
Addition: No
Conversion: No

6300 Arbor Ridge Drive, Chester, Chesterfield County, Virginia,
United States, 23831

12 Floor 2 - Laundry



Dimensions: 5'4" x 2'7"
Area: 14 sq. ft
Counted as living area: Yes

Heated: Yes
Finished: Yes
Enclosed: Yes
Contiguous: Yes
Permitted: Yes
Wet space: No
Addition: No
Conversion: No

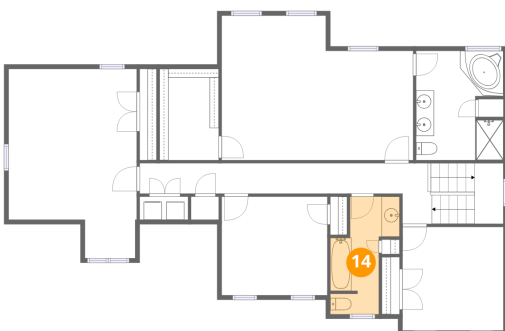
13 Floor 2 - Primary Bath



Dimensions: 9'8" x 12'1"
Area: 109 sq. ft
Counted as living area: Yes

Heated: Yes
Finished: Yes
Enclosed: Yes
Contiguous: Yes
Permitted: Yes
Wet space: Yes
Addition: No
Conversion: No

14 Floor 2 - Bath

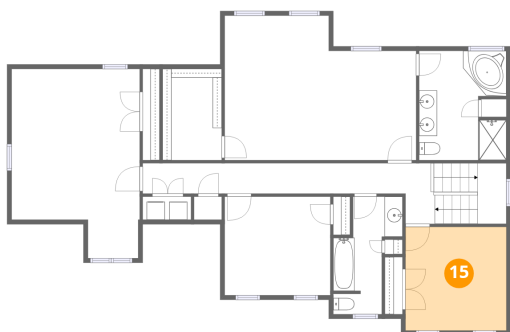


Dimensions: 5'6" x 13'0"
Area: 69 sq. ft
Counted as living area: Yes

Heated: Yes
Finished: Yes
Enclosed: Yes
Contiguous: Yes
Permitted: Yes
Wet space: Yes
Addition: No
Conversion: No

6300 Arbor Ridge Drive, Chester, Chesterfield County, Virginia,
United States, 23831

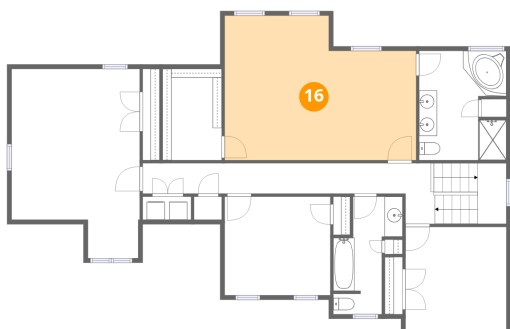
15 Floor 2 - Bedroom



Dimensions: 11'2" x 11'6"
Area: 128 sq. ft
Counted as living area: Yes

Heated: Yes
Finished: Yes
Enclosed: Yes
Contiguous: Yes
Permitted: Yes
Wet space: No
Addition: No
Conversion: No

16 Floor 2 - Primary Bedroom



Dimensions: 21'2" x 16'0"
Area: 302 sq. ft
Counted as living area: Yes

Heated: Yes
Finished: Yes
Enclosed: Yes
Contiguous: Yes
Permitted: Yes
Wet space: No
Addition: No
Conversion: No

17 Floor 2 - Bedroom

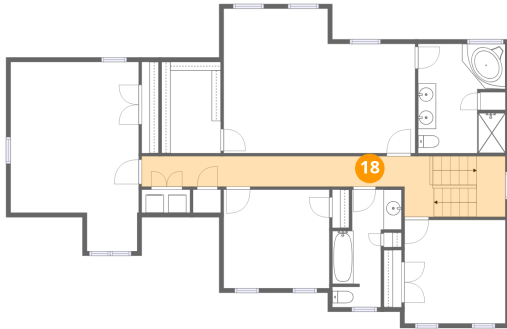


Dimensions: 14'2" x 20'11"
Area: 261 sq. ft
Counted as living area: Yes

Heated: Yes
Finished: Yes
Enclosed: Yes
Contiguous: Yes
Permitted: Yes
Wet space: No
Addition: No
Conversion: No

6300 Arbor Ridge Drive, Chester, Chesterfield County, Virginia,
United States, 23831

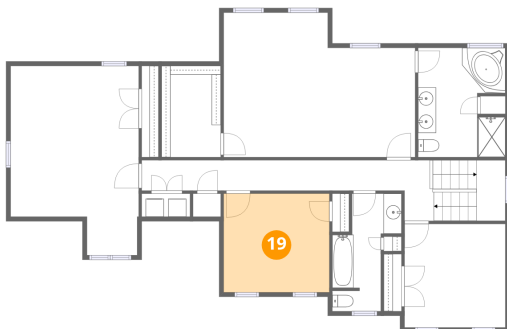
18 Floor 2 - Hall



Dimensions: 32'0" x 6'9"
Area: 173 sq. ft
Counted as living area: Yes

Heated: Yes
Finished: Yes
Enclosed: Yes
Contiguous: Yes
Permitted: Yes
Wet space: No
Addition: No
Conversion: No

19 Floor 2 - Bedroom



Dimensions: 11'8" x 10'11"
Area: 128 sq. ft
Counted as living area: Yes

Heated: Yes
Finished: Yes
Enclosed: Yes
Contiguous: Yes
Permitted: Yes
Wet space: No
Addition: No
Conversion: No