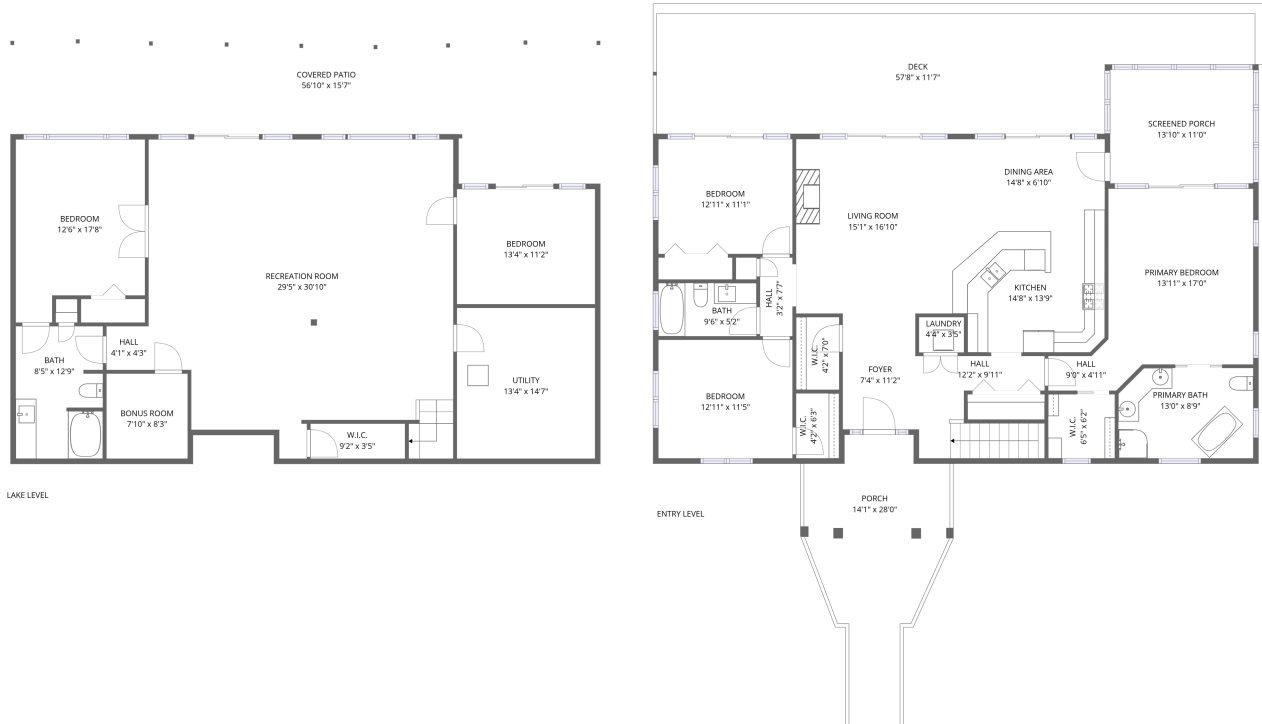


Home report

1040 Jefferson Dock Road, Penhook, Franklin County, Virginia,
United States, 24137



Total Area: 3114 sq. ft

Floor 1: 1437 sq. ft, Floor 2: 1677 sq. ft

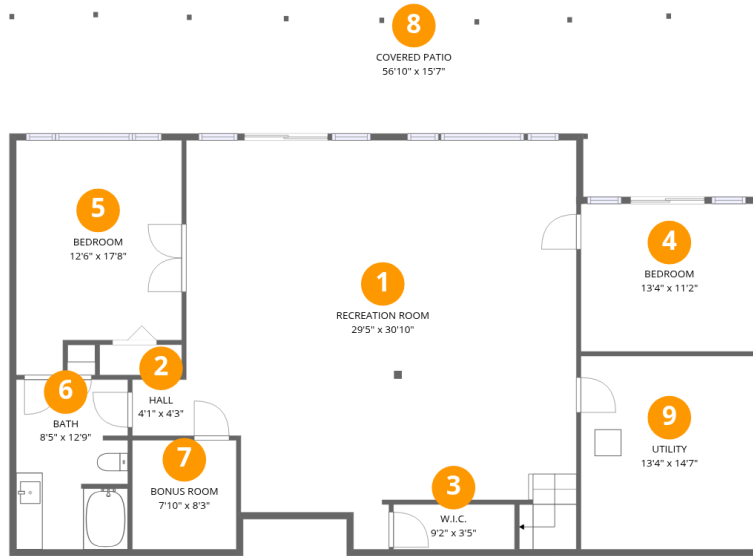
Excluded: Utility 194 sq. ft, Covered patio 680 sq. ft, Screened porch 152 sq. ft, Porch 254 sq. ft, Deck 573 sq. ft, Walls: 198 sq. ft

Property summary



Home report

1040 Jefferson Dock Road, Penhook, Franklin County, Virginia,
United States, 24137



Room dimensions

Floor 1

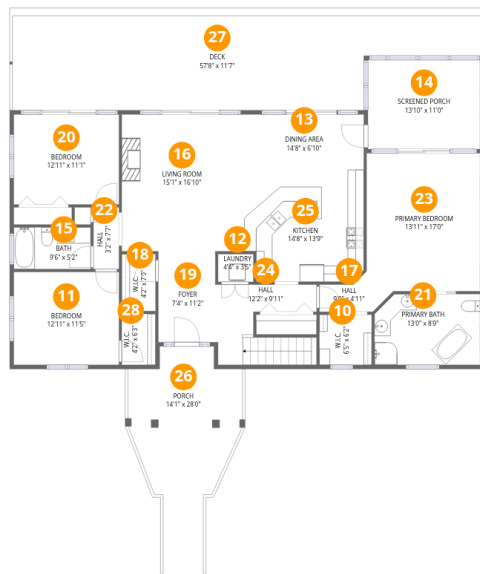
Total:1437sqft

Excluded: 874sqft

#		Max Dimensions	sqft	Included
1	Recreation Room	29'5" x 30'10"	809 sq. ft	Yes
2	Hall	4'1" x 4'3"	17 sq. ft	Yes
3	W.I.C.	9'2" x 3'5"	31 sq. ft	Yes
4	Bedroom	13'4" x 11'2"	148 sq. ft	Yes
5	Bedroom	12'6" x 17'8"	197 sq. ft	Yes
6	Bath	8'5" x 12'9"	106 sq. ft	Yes
7	Bonus Room	7'10" x 8'3"	64 sq. ft	Yes
8	Covered Patio	56'10" x 15'7"	680 sq. ft	No
9	Utility	13'4" x 14'7"	194 sq. ft	No

Home report

1040 Jefferson Dock Road, Penhook, Franklin County, Virginia, United States, 24137



Room dimensions

Floor 2

Total:1677sqft

Excluded: 979sqft

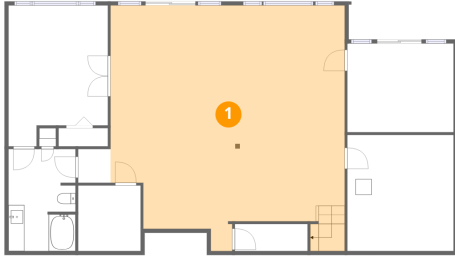
#		Max Dimensions	sqft	Included
10	W.I.C.	6'5" x 6'2"	40 sq. ft	Yes
11	Bedroom	12'11" x 11'5"	148 sq. ft	Yes
12	Laundry	4'4" x 3'5"	15 sq. ft	Yes
13	Dining Area	14'8" x 6'10"	100 sq. ft	Yes
14	Screened Porch	13'10" x 11'0"	152 sq. ft	No
15	Bath	9'6" x 5'2"	49 sq. ft	Yes
16	Living Room	15'1" x 16'10"	254 sq. ft	Yes
17	Hall	9'0" x 4'11"	30 sq. ft	Yes
18	W.I.C.	4'2" x 7'0"	29 sq. ft	Yes
19	Foyer	7'4" x 11'2"	81 sq. ft	Yes
20	Bedroom	12'11" x 11'1"	143 sq. ft	Yes

Home report

**1040 Jefferson Dock Road, Penhook, Franklin County, Virginia,
United States, 24137**

#		Max Dimensions	sqft	Included
21	Primary Bath	13'0" x 8'9"	110 sq. ft	Yes
22	Hall	3'2" x 7'7"	24 sq. ft	Yes
23	Primary Bedroom	13'11" x 17'0"	233 sq. ft	Yes
24	Hall	12'2" x 9'11"	95 sq. ft	Yes
25	Kitchen	14'8" x 13'9"	196 sq. ft	Yes
26	Porch	14'1" x 28'0"	254 sq. ft	No
27	Deck	57'8" x 11'7"	573 sq. ft	No
28	W.I.C.	4'2" x 6'3"	26 sq. ft	Yes

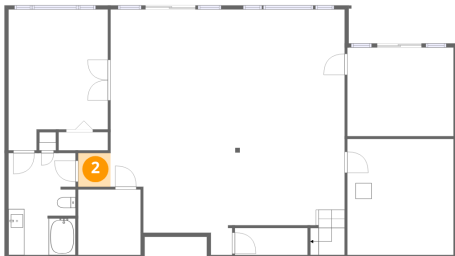
1 Floor 1 - Recreation Room



Max Dimensions: 29'5" x
30'10"
Calculated Area: 809 sq. ft
Included: Yes

Heated: Yes
Finished: Yes
Enclosed: Yes
Contiguous:
Yes
Permitted: Yes
Wet space: No
Addition: No
Conversion: No

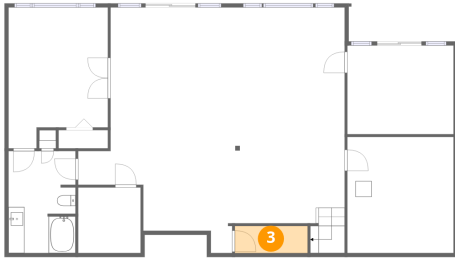
2 Floor 1 - Hall



Max Dimensions: 4'1" x 4'3"
Calculated Area: 17 sq. ft
Included: Yes

Heated: Yes
Finished: Yes
Enclosed: Yes
Contiguous: Yes
Permitted: Yes
Wet space: No
Addition: No
Conversion: No

3 Floor 1 - W.I.C.



Max Dimensions: 9'2" x 3'5"
Calculated Area: 31 sq. ft
Included: Yes

Heated: Yes
Finished: Yes
Enclosed: Yes
Contiguous: Yes
Permitted: Yes
Wet space: No
Addition: No
Conversion: No

4 Floor 1 - Bedroom



Max Dimensions: 13'4" x 11'2"
Calculated Area: 148 sq. ft
Included: Yes

Heated: Yes
Finished: Yes
Enclosed: Yes
Contiguous: Yes
Permitted: Yes
Wet space: No
Addition: No
Conversion: No

5 Floor 1 - Bedroom

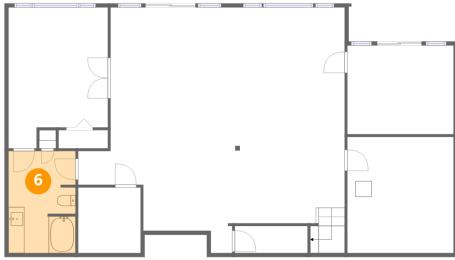


Max Dimensions: 12'6" x 17'8"
Calculated Area: 197 sq. ft
Included: Yes

Heated: Yes
Finished: Yes
Enclosed: Yes
Contiguous: Yes
Permitted: Yes
Wet space: No
Addition: No
Conversion: No

1040 Jefferson Dock Road, Penhook, Franklin County, Virginia,
United States, 24137

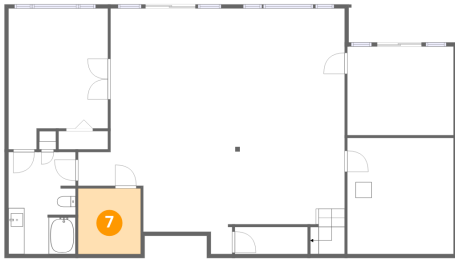
6 Floor 1 - Bath



Max Dimensions: 8'5" x 12'9"
Calculated Area: 106 sq. ft
Included: Yes

Heated: Yes
Finished: Yes
Enclosed: Yes
Contiguous: Yes
Permitted: Yes
Wet space: Yes
Addition: No
Conversion: No

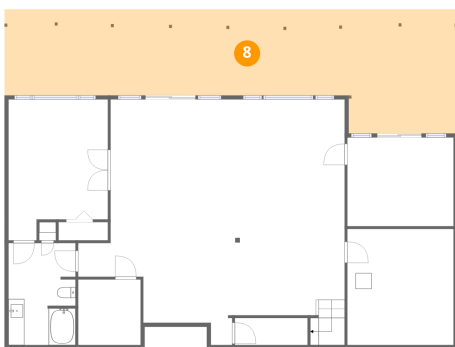
7 Floor 1 - Bonus Room



Max Dimensions: 7'10" x 8'3"
Calculated Area: 64 sq. ft
Included: Yes

Heated: Yes
Finished: Yes
Enclosed: Yes
Contiguous: Yes
Permitted: Yes
Wet space: No
Addition: No
Conversion: No

8 Floor 1 - Covered Patio

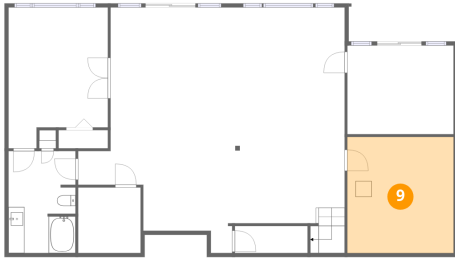


Max Dimensions: 56'10" x 15'7"
Calculated Area: 680 sq. ft
Included: No

Heated: No
Finished: No
Enclosed: No
Contiguous: Yes
Permitted: Yes
Wet space: No
Addition: No
Conversion: No

1040 Jefferson Dock Road, Penhook, Franklin County, Virginia,
United States, 24137

9 Floor 1 - Utility



Max Dimensions: 13'4" x 14'7"
Calculated Area: 194 sq. ft
Included: No

Heated: Yes
Finished: No
Enclosed: Yes
Contiguous: Yes
Permitted: Yes
Wet space: No
Addition: No
Conversion: No

10 Floor 2 - W.I.C.



Max Dimensions: 6'5" x 6'2"
Calculated Area: 40 sq. ft
Included: Yes

Heated: Yes
Finished: Yes
Enclosed: Yes
Contiguous: Yes
Permitted: Yes
Wet space: No
Addition: No
Conversion: No

11 Floor 2 - Bedroom



Max Dimensions: 12'11" x 11'5"
Calculated Area: 148 sq. ft
Included: Yes

Heated: Yes
Finished: Yes
Enclosed: Yes
Contiguous: Yes
Permitted: Yes
Wet space: No
Addition: No
Conversion: No

1040 Jefferson Dock Road, Penhook, Franklin County, Virginia,
United States, 24137

12 Floor 2 - Laundry



Max Dimensions: 4'4" x 3'5"
Calculated Area: 15 sq. ft
Included: Yes

Heated: Yes
Finished: Yes
Enclosed: Yes
Contiguous: Yes
Permitted: Yes
Wet space: No
Addition: No
Conversion: No

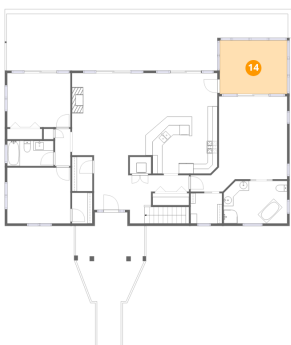
13 Floor 2 - Dining Area



Max Dimensions: 14'8" x
6'10"
Calculated Area: 100 sq. ft
Included: Yes

Heated: Yes
Finished: Yes
Enclosed: Yes
Contiguous:
Yes
Permitted: Yes
Wet space: No
Addition: No
Conversion: No

14 Floor 2 - Screened Porch



Max Dimensions: 13'10" x
11'0"
Calculated Area: 152 sq. ft
Included: No

Heated: No
Finished: No
Enclosed: No
Contiguous:
Yes
Permitted: Yes
Wet space: No
Addition: No
Conversion: No

15 Floor 2 - Bath



Max Dimensions: 9'6" x 5'2"
Calculated Area: 49 sq. ft
Included: Yes

Heated: Yes
Finished: Yes
Enclosed: Yes
Contiguous: Yes
Permitted: Yes
Wet space: Yes
Addition: No
Conversion: No

16 Floor 2 - Living Room



Max Dimensions: 15'1" x
16'10"
Calculated Area: 254 sq. ft
Included: Yes

Heated: Yes
Finished: Yes
Enclosed: Yes
Contiguous:
Yes
Permitted: Yes
Wet space: No
Addition: No
Conversion: No

17 Floor 2 - Hall



Max Dimensions: 9'0" x
4'11"
Calculated Area: 30 sq. ft
Included: Yes

Heated: Yes
Finished: Yes
Enclosed: Yes
Contiguous:
Yes
Permitted: Yes
Wet space: No
Addition: No
Conversion: No

18 Floor 2 - W.I.C.



Max Dimensions: 4'2" x 7'0"
Calculated Area: 29 sq. ft
Included: Yes

Heated: Yes
Finished: Yes
Enclosed: Yes
Contiguous: Yes
Permitted: Yes
Wet space: No
Addition: No
Conversion: No

19 Floor 2 - Foyer



Max Dimensions: 7'4" x
11'2"
Calculated Area: 81 sq. ft
Included: Yes

Heated: Yes
Finished: Yes
Enclosed: Yes
Contiguous:
Yes
Permitted: Yes
Wet space: No
Addition: No
Conversion: No

20 Floor 2 - Bedroom



Max Dimensions: 12'11" x
11'1"
Calculated Area: 143 sq. ft
Included: Yes

Heated: Yes
Finished: Yes
Enclosed: Yes
Contiguous:
Yes
Permitted: Yes
Wet space: No
Addition: No
Conversion: No

21 Floor 2 - Primary Bath



Max Dimensions: 13'0" x 8'9"
Calculated Area: 110 sq. ft
Included: Yes

Heated: Yes
Finished: Yes
Enclosed: Yes
Contiguous: Yes
Permitted: Yes
Wet space: Yes
Addition: No
Conversion: No

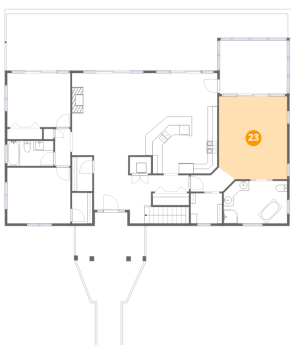
22 Floor 2 - Hall



Max Dimensions: 3'2" x 7'7"
Calculated Area: 24 sq. ft
Included: Yes

Heated: Yes
Finished: Yes
Enclosed: Yes
Contiguous: Yes
Permitted: Yes
Wet space: No
Addition: No
Conversion: No

23 Floor 2 - Primary Bedroom



Max Dimensions: 13'11" x 17'0"
Calculated Area: 233 sq. ft
Included: Yes

Heated: Yes
Finished: Yes
Enclosed: Yes
Contiguous: Yes
Permitted: Yes
Wet space: No
Addition: No
Conversion: No

24 Floor 2 - Hall



Max Dimensions: 12'2" x 9'11"
Calculated Area: 95 sq. ft
Included: Yes

Heated: Yes
Finished: Yes
Enclosed: Yes
Contiguous: Yes
Permitted: Yes
Wet space: No
Addition: No
Conversion: No

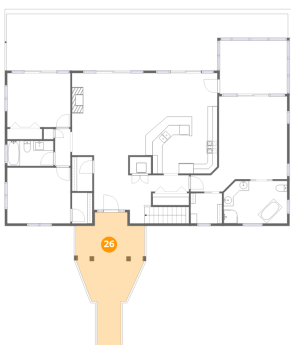
25 Floor 2 - Kitchen



Max Dimensions: 14'8" x 13'9"
Calculated Area: 196 sq. ft
Included: Yes

Heated: Yes
Finished: Yes
Enclosed: Yes
Contiguous: Yes
Permitted: Yes
Wet space: No
Addition: No
Conversion: No

26 Floor 2 - Porch



Max Dimensions: 14'1" x 28'0"
Calculated Area: 254 sq. ft
Included: No

Heated: No
Finished: No
Enclosed: No
Contiguous: Yes
Permitted: Yes
Wet space: No
Addition: No
Conversion: No

1040 Jefferson Dock Road, Penhook, Franklin County, Virginia,
United States, 24137

27 Floor 2 - Deck



Max Dimensions: 57'8" x 11'7"
Calculated Area: 573 sq. ft
Included: No

Heated: No
Finished: No
Enclosed: No
Contiguous: No
Permitted: Yes
Wet space: No
Addition: No
Conversion: No

28 Floor 2 - W.I.C.



Max Dimensions: 4'2" x 6'3"
Calculated Area: 26 sq. ft
Included: Yes

Heated: Yes
Finished: Yes
Enclosed: Yes
Contiguous: Yes
Permitted: Yes
Wet space: No
Addition: No
Conversion: No