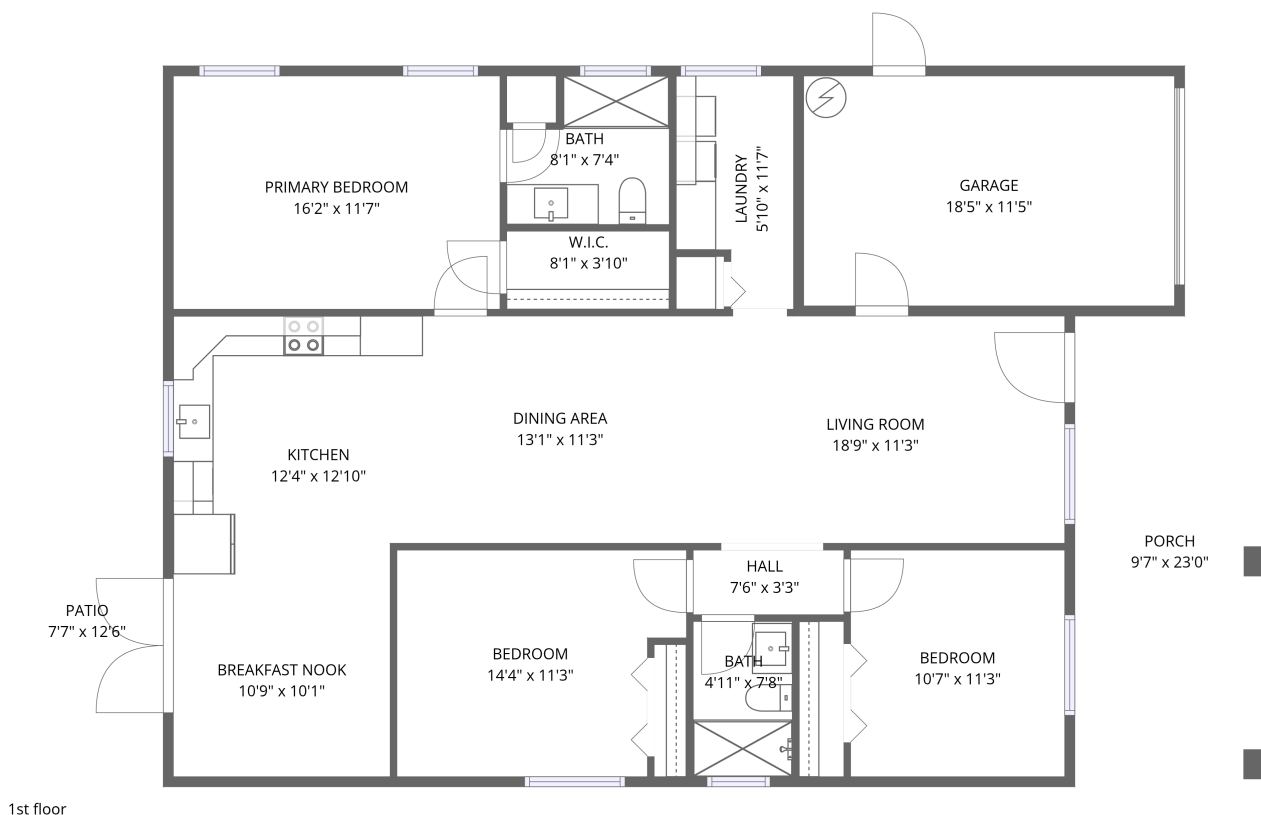


Home data report

4016 Baden Drive, Holiday, Pasco County, Florida, United States, 34691



Total Area: 1377 sq. ft

1st Floor: 1377 sq. ft

Excluded: Garage 210 sq. ft, Porch 220 sq. ft, Patio 94 sq. ft, Walls: 98 sq. ft

Property summary

 **1** Floors

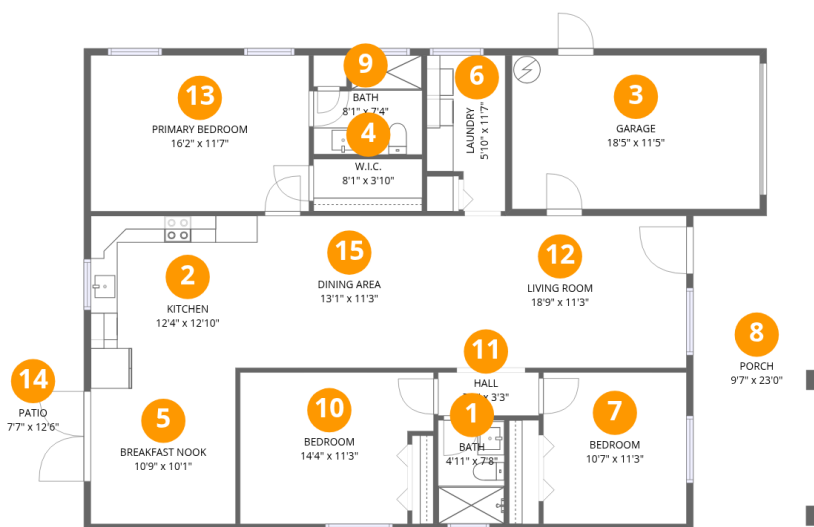
 **3** Bedrooms

 **2** Bathrooms

 **1** Garages

Home data report

4016 Baden Drive, Holiday, Pasco County, Florida, United States, 34691



Room dimensions

Floor 1

Total:1377sqft Excluded: 524sqft

#		Dimensions	sqft	Counted as living area
1	Bath	4'11" x 7'8"	38 sq. ft	Yes
2	Kitchen	12'4" x 12'10"	158 sq. ft	Yes
3	Garage	18'5" x 11'5"	209 sq. ft	No
4	W.I.C.	8'1" x 3'10"	31 sq. ft	Yes
5	Breakfast Nook	10'9" x 10'1"	108 sq. ft	Yes
6	Laundry	5'10" x 11'7"	68 sq. ft	Yes
7	Bedroom	10'7" x 11'3"	119 sq. ft	Yes
8	Porch	9'7" x 23'0"	220 sq. ft	No
9	Bath	8'1" x 7'4"	59 sq. ft	Yes
10	Bedroom	14'4" x 11'3"	162 sq. ft	Yes
11	Hall	7'6" x 3'3"	24 sq. ft	Yes

Home data report

4016 Baden Drive, Holiday, Pasco County, Florida, United States, 34691

#		Dimensions	sqft	Counted as living area
12	Living Room	18'9" x 11'3"	212 sq. ft	Yes
13	Primary Bedroom	16'2" x 11'7"	188 sq. ft	Yes
14	Patio	7'7" x 12'6"	94 sq. ft	No
15	Dining Area	13'1" x 11'3"	148 sq. ft	Yes

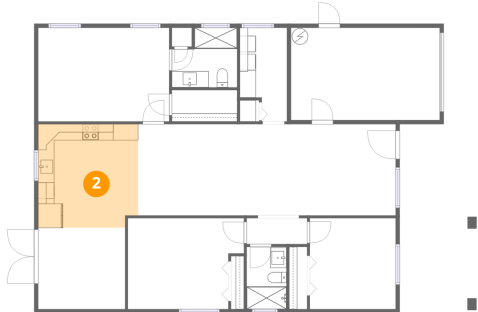
1 Floor 1 - Bath



Dimensions: 4'11" x 7'8"
Area: 38 sq. ft
Counted as living area: Yes

Heated: Yes
Finished: Yes
Enclosed: Yes
Contiguous: Yes
Permitted: Yes
Wet space: Yes
Addition: No
Conversion: No

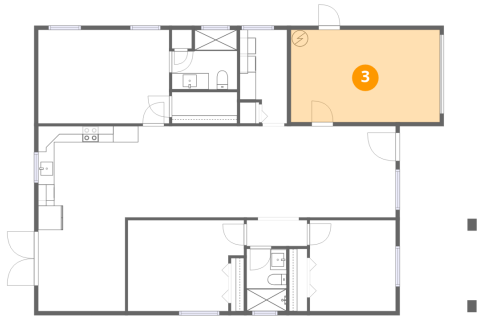
2 Floor 1 - Kitchen



Dimensions: 12'4" x 12'10"
Area: 158 sq. ft
Counted as living area: Yes

Heated: Yes
Finished: Yes
Enclosed: Yes
Contiguous: Yes
Permitted: Yes
Wet space: No
Addition: No
Conversion: No

3 Floor 1 - Garage



Dimensions: 18'5" x 11'5"
Area: 209 sq. ft
Counted as living area: No

Heated: No
Finished: No
Enclosed: Yes
Contiguous: Yes
Permitted: Yes
Wet space: No
Addition: No
Conversion: No

4 Floor 1 - W.I.C.



Dimensions: 8'1" x 3'10"
Area: 31 sq. ft
Counted as living area: Yes

Heated: Yes
Finished: Yes
Enclosed: Yes
Contiguous: Yes
Permitted: Yes
Wet space: No
Addition: No
Conversion: No

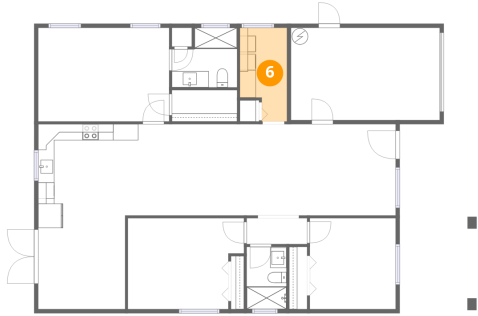
5 Floor 1 - Breakfast Nook



Dimensions: 10'9" x 10'1"
Area: 108 sq. ft
Counted as living area: Yes

Heated: Yes
Finished: Yes
Enclosed: Yes
Contiguous: Yes
Permitted: Yes
Wet space: No
Addition: No
Conversion: No

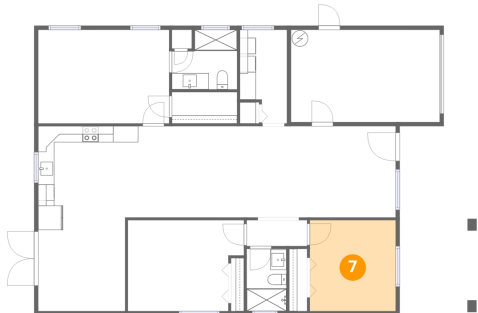
6 Floor 1 - Laundry



Dimensions: 5'10" x 11'7"
Area: 68 sq. ft
Counted as living area: Yes

Heated: Yes
Finished: Yes
Enclosed: Yes
Contiguous: Yes
Permitted: Yes
Wet space: No
Addition: No
Conversion: No

7 Floor 1 - Bedroom



Dimensions: 10'7" x 11'3"
Area: 119 sq. ft
Counted as living area: Yes

Heated: Yes
Finished: Yes
Enclosed: Yes
Contiguous: Yes
Permitted: Yes
Wet space: No
Addition: No
Conversion: No

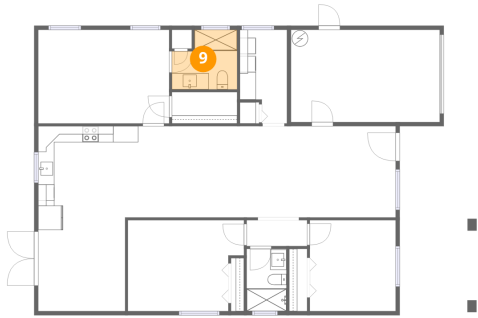
8 Floor 1 - Porch



Dimensions: 9'7" x 23'0"
Area: 220 sq. ft
Counted as living area: No

Heated: No
Finished: No
Enclosed: No
Contiguous: Yes
Permitted: Yes
Wet space: No
Addition: No
Conversion: No

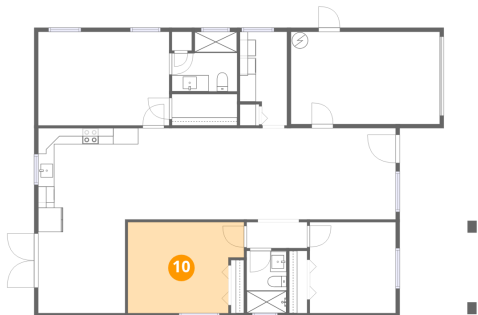
9 Floor 1 - Bath



Dimensions: 8'1" x 7'4"
Area: 59 sq. ft
Counted as living area: Yes

Heated: Yes
Finished: Yes
Enclosed: Yes
Contiguous: Yes
Permitted: Yes
Wet space: Yes
Addition: No
Conversion: No

10 Floor 1 - Bedroom



Dimensions: 14'4" x 11'3"
Area: 162 sq. ft
Counted as living area: Yes

Heated: Yes
Finished: Yes
Enclosed: Yes
Contiguous: Yes
Permitted: Yes
Wet space: No
Addition: No
Conversion: No

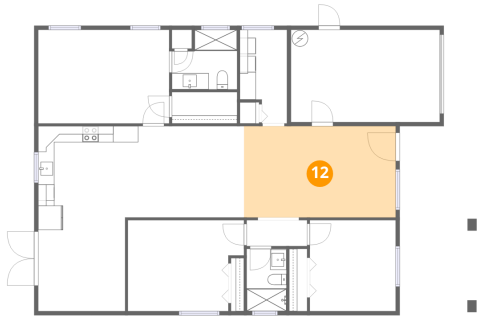
11 Floor 1 - Hall



Dimensions: 7'6" x 3'3"
Area: 24 sq. ft
Counted as living area: Yes

Heated: Yes
Finished: Yes
Enclosed: Yes
Contiguous: Yes
Permitted: Yes
Wet space: No
Addition: No
Conversion: No

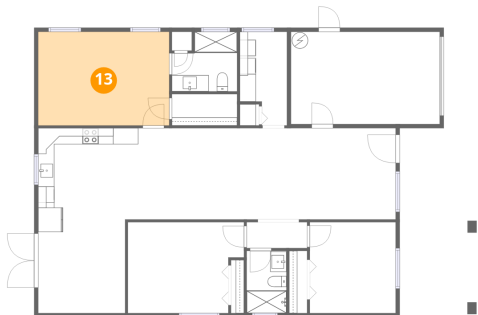
12 Floor 1 - Living Room



Dimensions: 18'9" x 11'3"
Area: 212 sq. ft
Counted as living area: Yes

Heated: Yes
Finished: Yes
Enclosed: Yes
Contiguous: Yes
Permitted: Yes
Wet space: No
Addition: No
Conversion: No

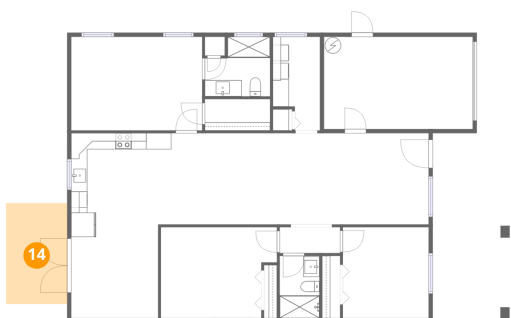
13 Floor 1 - Primary Bedroom



Dimensions: 16'2" x 11'7"
Area: 188 sq. ft
Counted as living area: Yes

Heated: Yes
Finished: Yes
Enclosed: Yes
Contiguous: Yes
Permitted: Yes
Wet space: No
Addition: No
Conversion: No

14 Floor 1 - Patio

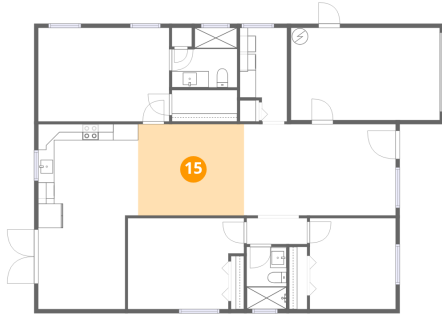


Dimensions: 7'7" x 12'6"
Area: 94 sq. ft
Counted as living area: No

Heated: No
Finished: No
Enclosed: No
Contiguous: Yes
Permitted: Yes
Wet space: No
Addition: No
Conversion: No

4016 Baden Drive, Holiday, Pasco County, Florida, United States, 34691

15 Floor 1 - Dining Area



Dimensions: 13'1" x 11'3"
Area: 148 sq. ft
Counted as living area: Yes

Heated: Yes
Finished: Yes
Enclosed: Yes
Contiguous: Yes
Permitted: Yes
Wet space: No
Addition: No
Conversion: No