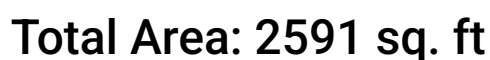


**272 Tonoloway Point Circle, Great Cacapon, Morgan County,  
West Virginia, United States, 25422**



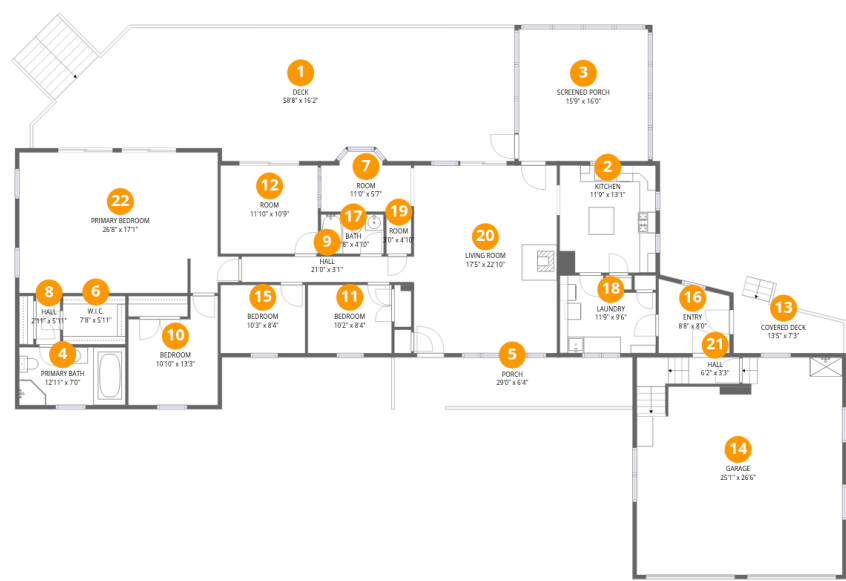
Excluded: Garage 603 sq. ft, Screened porch 254 sq. ft, Porch 176 sq. ft, Covered deck 81 sq. ft, Deck 893 sq. ft, Embedded window 9 sq. ft, Balcony 145 sq. ft, Low ceiling 166 sq. ft, Walls: 248 sq. ft

## Property summary



Home data report

272 Tonoloway Point Circle, Great Cacapon, Morgan County,  
West Virginia, United States, 25422



Room dimensions

Floor 1 Total:2094sqft   Excluded: 2016sqft

#		Dimensions	sqft	Counted as living area
1	Deck	58'8" x 16'2"	901 sq. ft	No
2	Kitchen	11'9" x 13'1"	153 sq. ft	Yes
3	Screened Porch	15'9" x 16'0"	254 sq. ft	No
4	Primary Bath	12'11" x 7'0"	91 sq. ft	Yes
5	Porch	29'0" x 6'4"	176 sq. ft	No
6	W.I.C.	7'8" x 5'11"	45 sq. ft	Yes
7	Room	11'0" x 5'7"	62 sq. ft	Yes
8	Hall	2'11" x 5'11"	17 sq. ft	Yes
9	Hall	21'0" x 3'1"	65 sq. ft	Yes
10	Bedroom	10'10" x 13'3"	123 sq. ft	Yes
11	Bedroom	10'2" x 8'4"	85 sq. ft	Yes

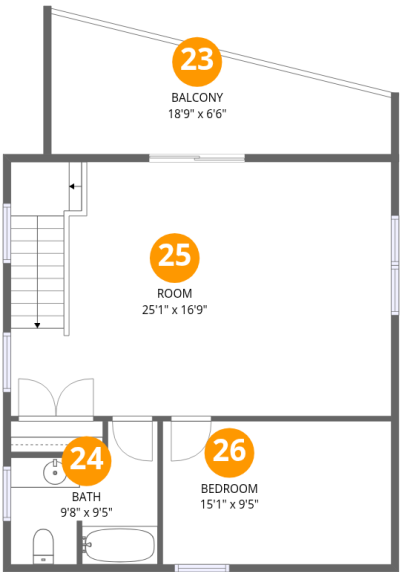
## Home data report

**272 Tonoloway Point Circle, Great Cacapon, Morgan County,  
West Virginia, United States, 25422**

#		Dimensions	sqft	Counted as living area
12	Room	11'10" x 10'9"	128 sq. ft	Yes
13	Covered Deck	13'5" x 7'3"	81 sq. ft	No
14	Garage	25'1" x 26'6"	603 sq. ft	No
15	Bedroom	10'3" x 8'4"	86 sq. ft	Yes
16	Entry	8'8" x 8'0"	69 sq. ft	Yes
17	Bath	7'8" x 4'10"	37 sq. ft	Yes
18	Laundry	11'9" x 9'6"	97 sq. ft	Yes
19	Room	3'0" x 4'10"	15 sq. ft	Yes
20	Living Room	17'5" x 22'10"	398 sq. ft	Yes
21	Hall	6'2" x 3'3"	53 sq. ft	Yes
22	Primary Bedroom	26'8" x 17'1"	421 sq. ft	Yes

Home data report

272 Tonoloway Point Circle, Great Cacapon, Morgan County,  
West Virginia, United States, 25422



Room dimensions

Floor 2 Total:497sqft Excluded: 311sqft

#		Dimensions	sqft	Counted as living area
23	Balcony	18'9" x 6'6"	145 sq. ft	No
24	Bath	9'8" x 9'5"	75 sq. ft	Yes
25	Room	25'1" x 16'9"	314 sq. ft	Yes
26	Bedroom	15'1" x 9'5"	83 sq. ft	Yes

272 Tonoloway Point Circle, Great Cacapon, Morgan County,  
West Virginia, United States, 25422

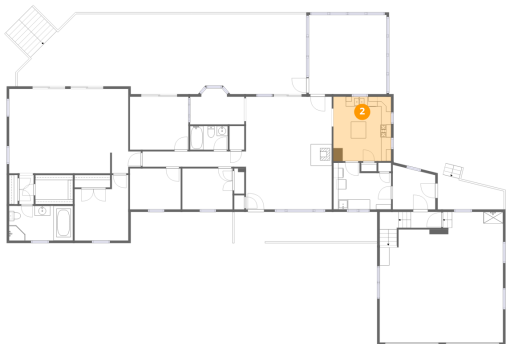
1 Floor 1 - Deck



Dimensions: 58'8" x 16'2"  
Area: 901 sq. ft  
Counted as living area: No

Heated: No  
Finished: No  
Enclosed: No  
Contiguous: Yes  
Permitted: Yes  
Wet space: No  
Addition: No  
Conversion: No

2 Floor 1 - Kitchen

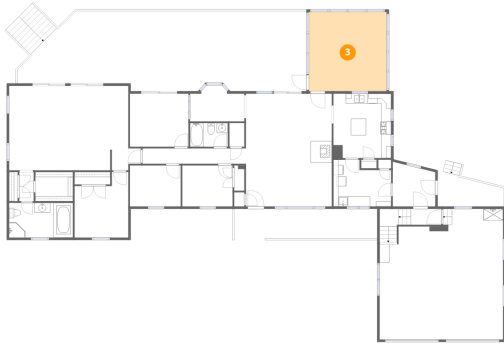


Dimensions: 11'9" x 13'1"  
Area: 153 sq. ft  
Counted as living area: Yes

Heated: Yes  
Finished: Yes  
Enclosed: Yes  
Contiguous: Yes  
Permitted: Yes  
Wet space: No  
Addition: No  
Conversion: No

272 Tonoloway Point Circle, Great Cacapon, Morgan County,  
West Virginia, United States, 25422

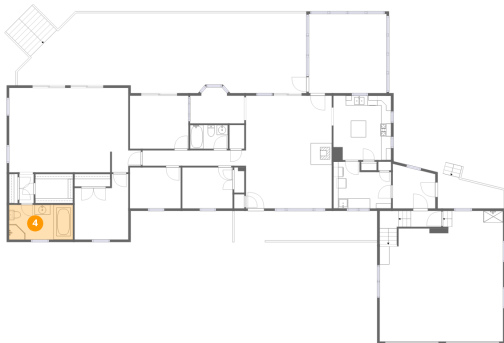
### 3 Floor 1 - Screened Porch



Dimensions: 15'9" x 16'0"  
Area: 254 sq. ft  
Counted as living area: No

Heated: No  
Finished: No  
Enclosed: No  
Contiguous: Yes  
Permitted: Yes  
Wet space: No  
Addition: No  
Conversion: No

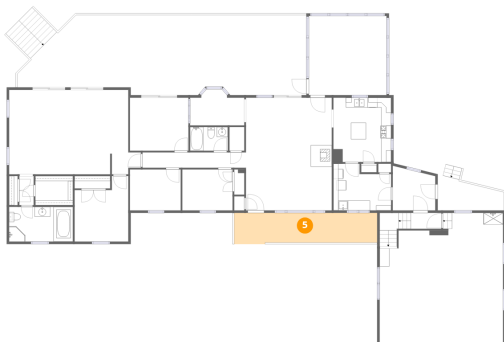
### 4 Floor 1 - Primary Bath



Dimensions: 12'11" x 7'0"  
Area: 91 sq. ft  
Counted as living area: Yes

Heated: Yes  
Finished: Yes  
Enclosed: Yes  
Contiguous: Yes  
Permitted: Yes  
Wet space: Yes  
Addition: No  
Conversion: No

### 5 Floor 1 - Porch

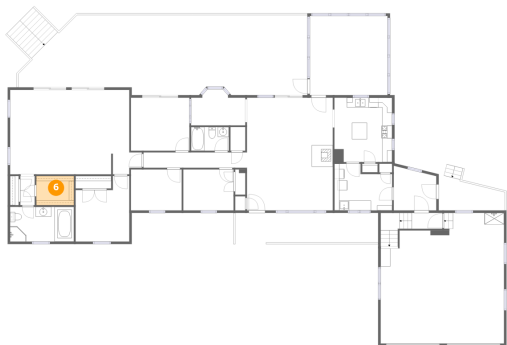


Dimensions: 29'0" x 6'4"  
Area: 176 sq. ft  
Counted as living area: No

Heated: No  
Finished: No  
Enclosed: No  
Contiguous: Yes  
Permitted: Yes  
Wet space: No  
Addition: No  
Conversion: No

272 Tonoloway Point Circle, Great Cacapon, Morgan County,  
West Virginia, United States, 25422

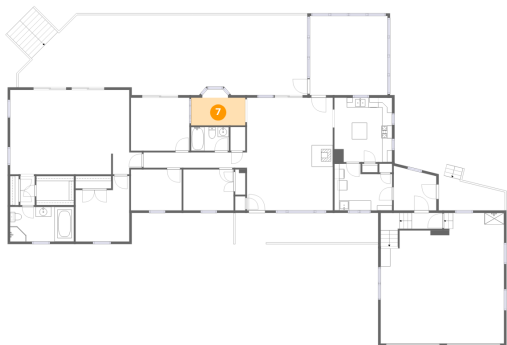
6 Floor 1 - W.I.C.



Dimensions: 7'8" x 5'11"  
Area: 45 sq. ft  
Counted as living area: Yes

Heated: Yes  
Finished: Yes  
Enclosed: Yes  
Contiguous: Yes  
Permitted: Yes  
Wet space: No  
Addition: No  
Conversion: No

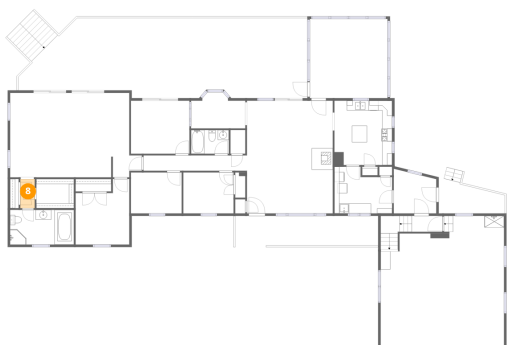
7 Floor 1 - Room



Dimensions: 11'0" x 5'7"  
Area: 62 sq. ft  
Counted as living area: Yes

Heated: Yes  
Finished: Yes  
Enclosed: Yes  
Contiguous: Yes  
Permitted: Yes  
Wet space: No  
Addition: No  
Conversion: No

8 Floor 1 - Hall

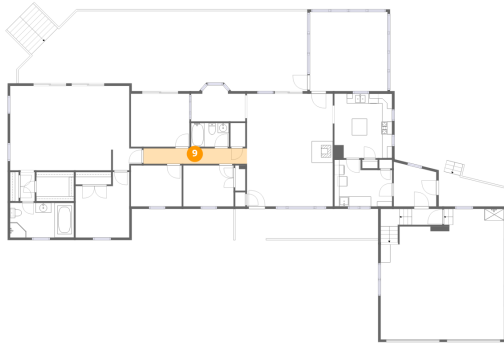


Dimensions: 2'11" x 5'11"  
Area: 17 sq. ft  
Counted as living area: Yes

Heated: Yes  
Finished: Yes  
Enclosed: Yes  
Contiguous: Yes  
Permitted: Yes  
Wet space: No  
Addition: No  
Conversion: No

272 Tonoloway Point Circle, Great Cacapon, Morgan County,  
West Virginia, United States, 25422

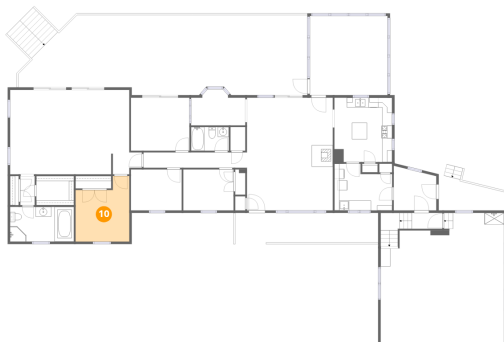
## 9 Floor 1 - Hall



Dimensions: 21'0" x 3'1"  
Area: 65 sq. ft  
Counted as living area: Yes

Heated: Yes  
Finished: Yes  
Enclosed: Yes  
Contiguous: Yes  
Permitted: Yes  
Wet space: No  
Addition: No  
Conversion: No

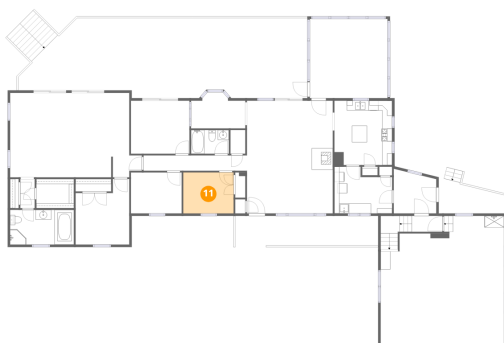
## 10 Floor 1 - Bedroom



Dimensions: 10'10" x 13'3"  
Area: 123 sq. ft  
Counted as living area: Yes

Heated: Yes  
Finished: Yes  
Enclosed: Yes  
Contiguous: Yes  
Permitted: Yes  
Wet space: No  
Addition: No  
Conversion: No

## 11 Floor 1 - Bedroom



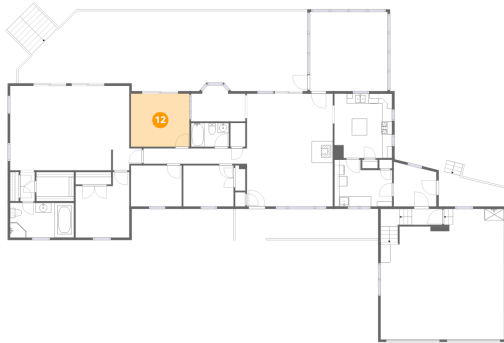
Dimensions: 10'2" x 8'4"  
Area: 85 sq. ft  
Counted as living area: Yes

Heated: Yes  
Finished: Yes  
Enclosed: Yes  
Contiguous: Yes  
Permitted: Yes  
Wet space: No  
Addition: No  
Conversion: No



272 Tonoloway Point Circle, Great Cacapon, Morgan County,  
West Virginia, United States, 25422

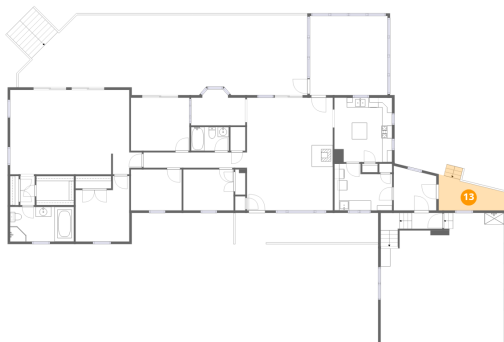
## 12 Floor 1 - Room



Dimensions: 11'10" x 10'9"  
Area: 128 sq. ft  
Counted as living area: Yes

Heated: Yes  
Finished: Yes  
Enclosed: Yes  
Contiguous: Yes  
Permitted: Yes  
Wet space: No  
Addition: No  
Conversion: No

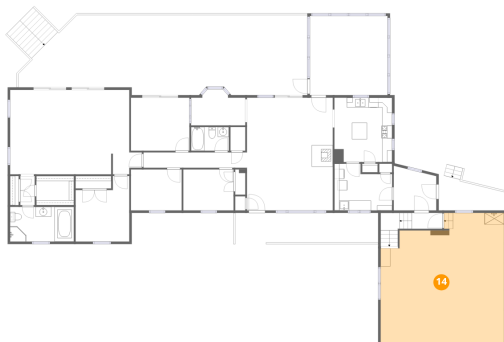
## 13 Floor 1 - Covered Deck



Dimensions: 13'5" x 7'3"  
Area: 81 sq. ft  
Counted as living area: No

Heated: No  
Finished: No  
Enclosed: No  
Contiguous: Yes  
Permitted: Yes  
Wet space: No  
Addition: No  
Conversion: No

## 14 Floor 1 - Garage

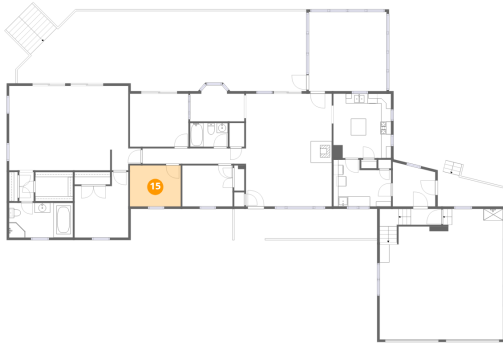


Dimensions: 25'1" x 26'6"  
Area: 603 sq. ft  
Counted as living area: No

Heated: No  
Finished: No  
Enclosed: Yes  
Contiguous: Yes  
Permitted: Yes  
Wet space: No  
Addition: No  
Conversion: No

272 Tonoloway Point Circle, Great Cacapon, Morgan County,  
West Virginia, United States, 25422

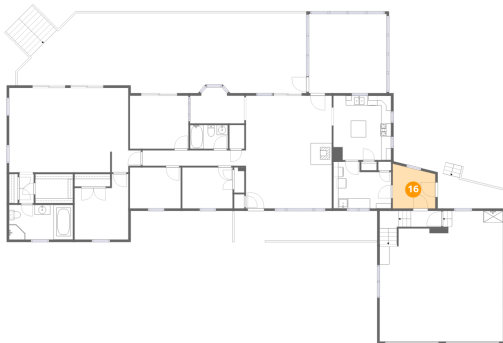
### 15 Floor 1 - Bedroom



Dimensions: 10'3" x 8'4"  
Area: 86 sq. ft  
Counted as living area: Yes

Heated: Yes  
Finished: Yes  
Enclosed: Yes  
Contiguous: Yes  
Permitted: Yes  
Wet space: No  
Addition: No  
Conversion: No

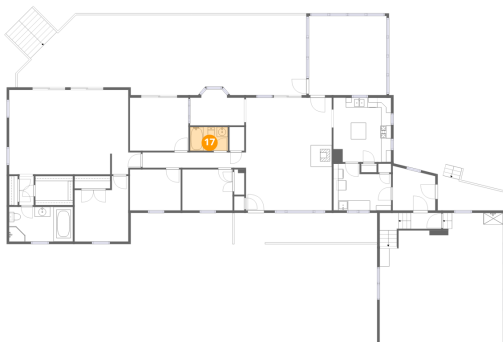
### 16 Floor 1 - Entry



Dimensions: 8'8" x 8'0"  
Area: 69 sq. ft  
Counted as living area: Yes

Heated: Yes  
Finished: Yes  
Enclosed: Yes  
Contiguous: Yes  
Permitted: Yes  
Wet space: No  
Addition: No  
Conversion: No

### 17 Floor 1 - Bath

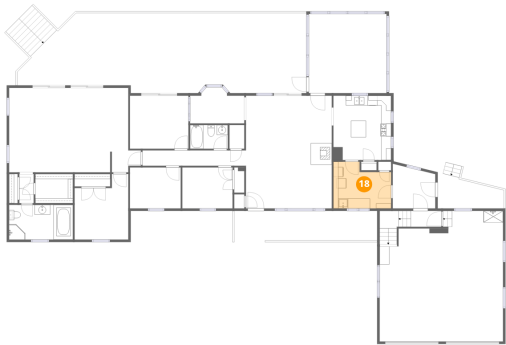


Dimensions: 7'8" x 4'10"  
Area: 37 sq. ft  
Counted as living area: Yes

Heated: Yes  
Finished: Yes  
Enclosed: Yes  
Contiguous: Yes  
Permitted: Yes  
Wet space: Yes  
Addition: No  
Conversion: No

272 Tonoloway Point Circle, Great Cacapon, Morgan County,  
West Virginia, United States, 25422

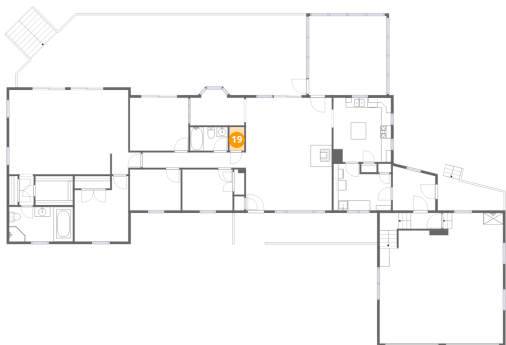
18 Floor 1 - Laundry



Dimensions: 11'9" x 9'6"  
Area: 97 sq. ft  
Counted as living area: Yes

Heated: Yes  
Finished: Yes  
Enclosed: Yes  
Contiguous: Yes  
Permitted: Yes  
Wet space: No  
Addition: No  
Conversion: No

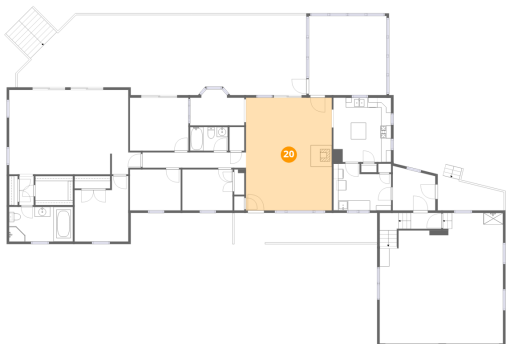
19 Floor 1 - Room



Dimensions: 3'0" x 4'10"  
Area: 15 sq. ft  
Counted as living area: Yes

Heated: Yes  
Finished: Yes  
Enclosed: Yes  
Contiguous: Yes  
Permitted: Yes  
Wet space: No  
Addition: No  
Conversion: No

20 Floor 1 - Living Room

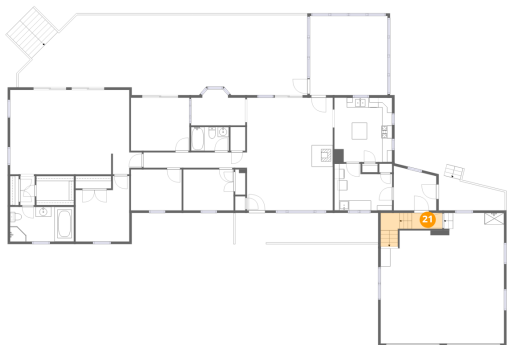


Dimensions: 17'5" x 22'10"  
Area: 398 sq. ft  
Counted as living area: Yes

Heated: Yes  
Finished: Yes  
Enclosed: Yes  
Contiguous: Yes  
Permitted: Yes  
Wet space: No  
Addition: No  
Conversion: No

272 Tonoloway Point Circle, Great Cacapon, Morgan County,  
West Virginia, United States, 25422

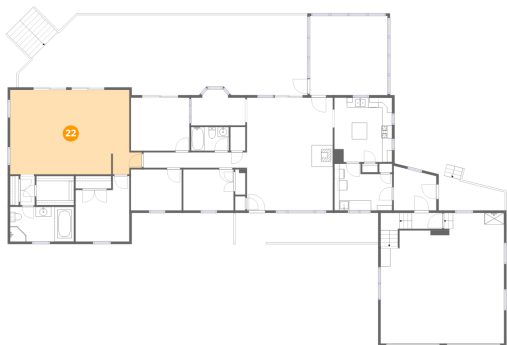
21 Floor 1 - Hall



Dimensions: 6'2" x 3'3"  
Area: 53 sq. ft  
Counted as living area: Yes

Heated: Yes  
Finished: Yes  
Enclosed: Yes  
Contiguous: Yes  
Permitted: Yes  
Wet space: No  
Addition: No  
Conversion: No

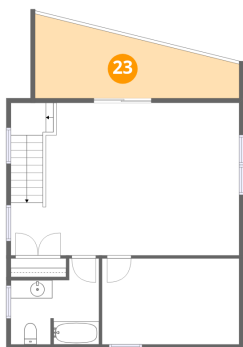
22 Floor 1 - Primary Bedroom



Dimensions: 26'8" x 17'1"  
Area: 421 sq. ft  
Counted as living area: Yes

Heated: Yes  
Finished: Yes  
Enclosed: Yes  
Contiguous: Yes  
Permitted: Yes  
Wet space: No  
Addition: No  
Conversion: No

23 Floor 2 - Balcony

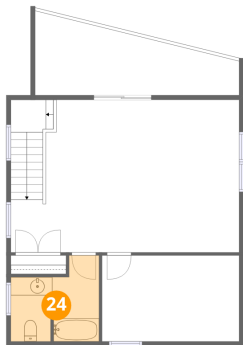


Dimensions: 18'9" x 6'6"  
Area: 145 sq. ft  
Counted as living area: No

Heated: No  
Finished: No  
Enclosed: No  
Contiguous: Yes  
Permitted: Yes  
Wet space: No  
Addition: No  
Conversion: No

272 Tonoloway Point Circle, Great Cacapon, Morgan County,  
West Virginia, United States, 25422

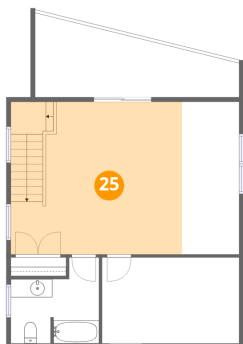
24 Floor 2 - Bath



Dimensions: 9'8" x 9'5"  
Area: 75 sq. ft  
Counted as living area: Yes

Heated: Yes  
Finished: Yes  
Enclosed: Yes  
Contiguous: Yes  
Permitted: Yes  
Wet space: Yes  
Addition: No  
Conversion: No

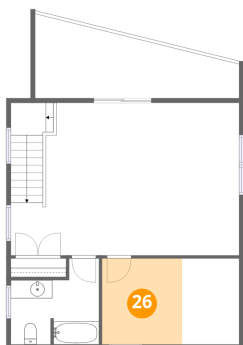
25 Floor 2 - Room



Dimensions: 25'1" x 16'9"  
Area: 314 sq. ft  
Counted as living area: Yes

Heated: Yes  
Finished: Yes  
Enclosed: Yes  
Contiguous: Yes  
Permitted: Yes  
Wet space: No  
Addition: No  
Conversion: No

26 Floor 2 - Bedroom



Dimensions: 15'1" x 9'5"  
Area: 83 sq. ft  
Counted as living area: Yes

Heated: Yes  
Finished: Yes  
Enclosed: Yes  
Contiguous: Yes  
Permitted: Yes  
Wet space: No  
Addition: No  
Conversion: No