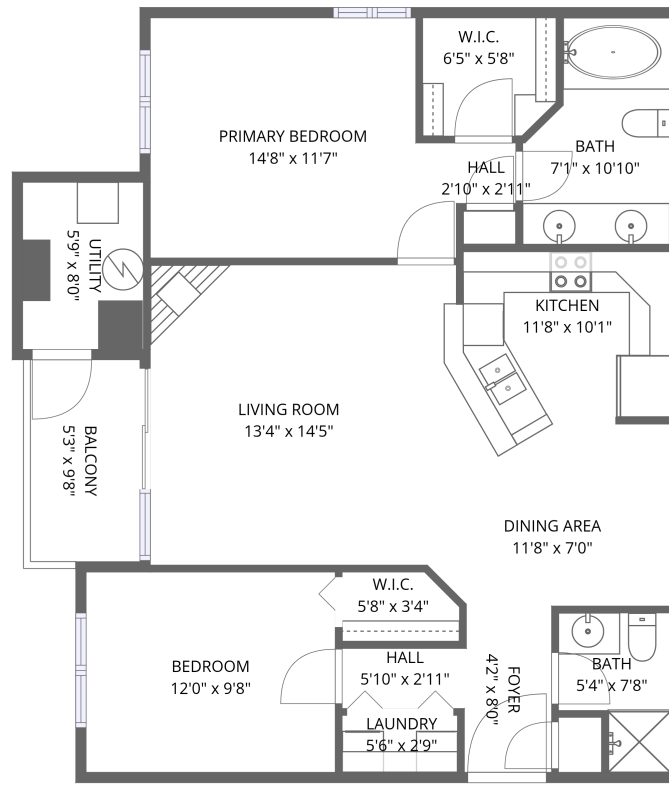


# Home data report

## 7394 S Alkire St, #301, Littleton, CO, US, #301



1st floor


**Total Area: 939 sq. ft**

1st Floor: 939 sq. ft

Excluded: Utility 47 sq. ft, Balcony 51 sq. ft, Walls: 0 sq. ft

### Property summary

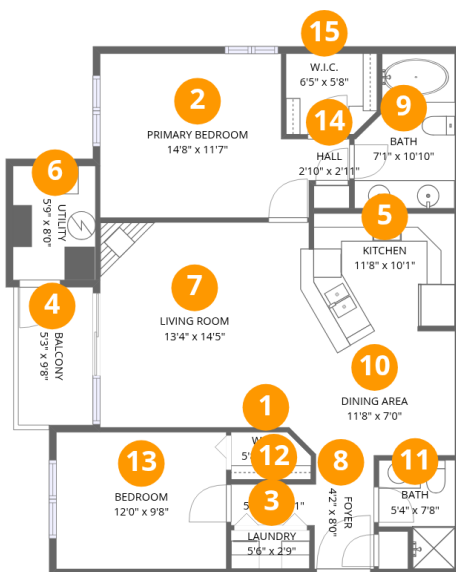
 **1** Floors

 **2** Bedrooms

 **2** Bathrooms

# Home data report

7394 S Alkire St, #301, Littleton, CO, US, #301



## Room dimensions

Floor 1

Total:939sqft Excluded: 98sqft

#		Dimensions	sqft	Counted as living area
1	W.I.C.	5'8" x 3'4"	19 sq. ft	Yes
2	Primary Bedroom	14'8" x 11'7"	170 sq. ft	Yes
3	Laundry	5'6" x 2'9"	15 sq. ft	Yes
4	Balcony	5'3" x 9'8"	51 sq. ft	No
5	Kitchen	11'8" x 10'1"	118 sq. ft	Yes
6	Utility	5'9" x 8'0"	46 sq. ft	No
7	Living Room	13'4" x 14'5"	192 sq. ft	Yes
8	Foyer	4'2" x 8'0"	33 sq. ft	Yes
9	Bath	7'1" x 10'10"	77 sq. ft	Yes
10	Dining Area	11'8" x 7'0"	82 sq. ft	Yes
11	Bath	5'4" x 7'8"	41 sq. ft	Yes

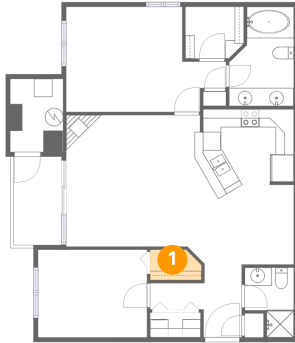
Home data report

**7394 S Alkire St,#301,Littleton,CO,US, #301**

#		Dimensions	sqft	Counted as living area
12	Hall	5'10" x 2'11"	17 sq. ft	Yes
13	Bedroom	12'0" x 9'8"	115 sq. ft	Yes
14	Hall	2'10" x 2'11"	8 sq. ft	Yes
15	W.I.C.	6'5" x 5'8"	37 sq. ft	Yes

**1** Floor 1 - W.I.C.

---

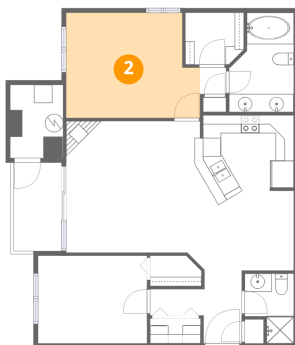


Dimensions: 5'8" x 3'4"  
Area: 19 sq. ft  
Counted as living area: Yes

Heated: Yes  
Finished: Yes  
Enclosed: Yes  
Contiguous: Yes  
Permitted: Yes  
Wet space: No  
Addition: No  
Conversion: No

**2** Floor 1 - Primary Bedroom

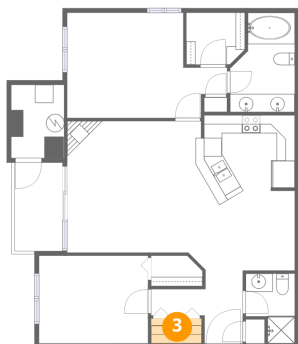
---



Dimensions: 14'8" x 11'7"  
Area: 170 sq. ft  
Counted as living area: Yes

Heated: Yes  
Finished: Yes  
Enclosed: Yes  
Contiguous: Yes  
Permitted: Yes  
Wet space: No  
Addition: No  
Conversion: No

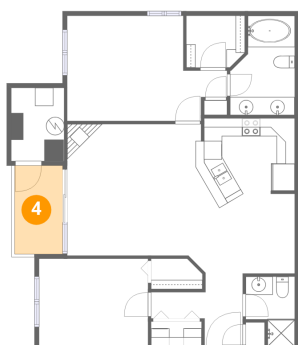
### 3 Floor 1 - Laundry



Dimensions: 5'6" x 2'9"  
Area: 15 sq. ft  
Counted as living area: Yes

Heated: Yes  
Finished: Yes  
Enclosed: Yes  
Contiguous: Yes  
Permitted: Yes  
Wet space: No  
Addition: No  
Conversion: No

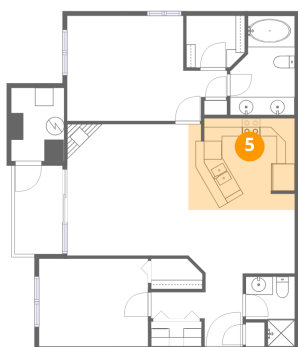
### 4 Floor 1 - Balcony



Dimensions: 5'3" x 9'8"  
Area: 51 sq. ft  
Counted as living area: No

Heated: No  
Finished: No  
Enclosed: No  
Contiguous: Yes  
Permitted: Yes  
Wet space: No  
Addition: No  
Conversion: No

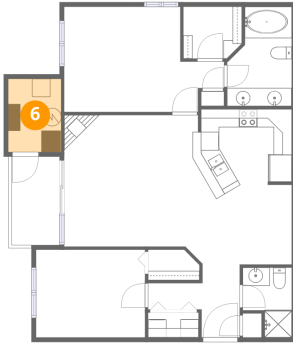
### 5 Floor 1 - Kitchen



Dimensions: 11'8" x 10'1"  
Area: 118 sq. ft  
Counted as living area: Yes

Heated: Yes  
Finished: Yes  
Enclosed: Yes  
Contiguous: Yes  
Permitted: Yes  
Wet space: No  
Addition: No  
Conversion: No

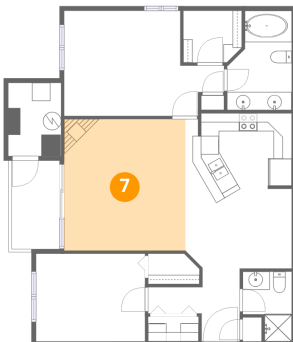
## 6 Floor 1 - Utility



Dimensions: 5'9" x 8'0"  
Area: 46 sq. ft  
Counted as living area: No

Heated: Yes  
Finished: No  
Enclosed: Yes  
Contiguous: Yes  
Permitted: Yes  
Wet space: No  
Addition: No  
Conversion: No

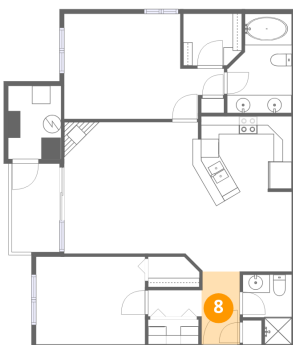
## 7 Floor 1 - Living Room



Dimensions: 13'4" x 14'5"  
Area: 192 sq. ft  
Counted as living area: Yes

Heated: Yes  
Finished: Yes  
Enclosed: Yes  
Contiguous: Yes  
Permitted: Yes  
Wet space: No  
Addition: No  
Conversion: No

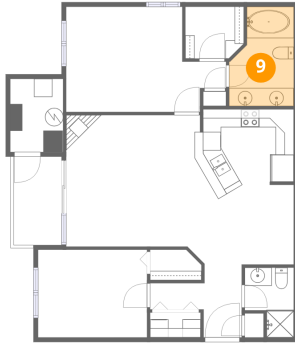
## 8 Floor 1 - Foyer



Dimensions: 4'2" x 8'0"  
Area: 33 sq. ft  
Counted as living area: Yes

Heated: Yes  
Finished: Yes  
Enclosed: Yes  
Contiguous: Yes  
Permitted: Yes  
Wet space: No  
Addition: No  
Conversion: No

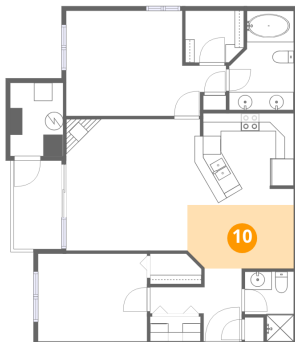
### 9 Floor 1 - Bath



Dimensions: 7'1" x 10'10"  
Area: 77 sq. ft  
Counted as living area: Yes

Heated: Yes  
Finished: Yes  
Enclosed: Yes  
Contiguous: Yes  
Permitted: Yes  
Wet space: Yes  
Addition: No  
Conversion: No

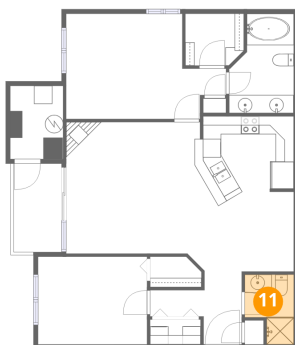
### 10 Floor 1 - Dining Area



Dimensions: 11'8" x 7'0"  
Area: 82 sq. ft  
Counted as living area: Yes

Heated: Yes  
Finished: Yes  
Enclosed: Yes  
Contiguous: Yes  
Permitted: Yes  
Wet space: No  
Addition: No  
Conversion: No

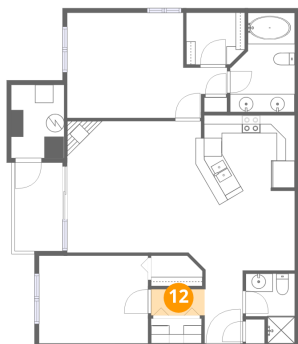
### 11 Floor 1 - Bath



Dimensions: 5'4" x 7'8"  
Area: 41 sq. ft  
Counted as living area: Yes

Heated: Yes  
Finished: Yes  
Enclosed: Yes  
Contiguous: Yes  
Permitted: Yes  
Wet space: Yes  
Addition: No  
Conversion: No

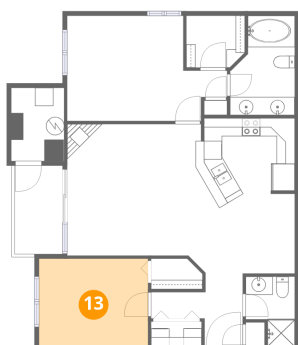
### 12 Floor 1 - Hall



Dimensions: 5'10" x 2'11"  
Area: 17 sq. ft  
Counted as living area: Yes

Heated: Yes  
Finished: Yes  
Enclosed: Yes  
Contiguous: Yes  
Permitted: Yes  
Wet space: No  
Addition: No  
Conversion: No

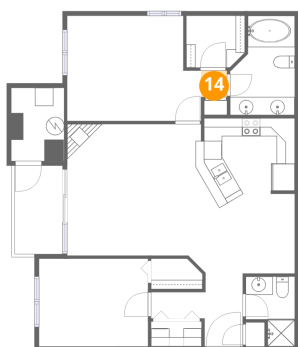
### 13 Floor 1 - Bedroom



Dimensions: 12'0" x 9'8"  
Area: 115 sq. ft  
Counted as living area: Yes

Heated: Yes  
Finished: Yes  
Enclosed: Yes  
Contiguous: Yes  
Permitted: Yes  
Wet space: No  
Addition: No  
Conversion: No

### 14 Floor 1 - Hall

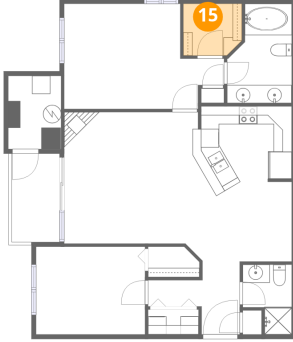


Dimensions: 2'10" x 2'11"  
Area: 8 sq. ft  
Counted as living area: Yes

Heated: Yes  
Finished: Yes  
Enclosed: Yes  
Contiguous: Yes  
Permitted: Yes  
Wet space: No  
Addition: No  
Conversion: No

**15** Floor 1 - W.I.C.

---



**Dimensions:** 6'5" x 5'8"  
**Area:** 37 sq. ft  
**Counted as living area:** Yes

**Heated:** Yes  
**Finished:** Yes  
**Enclosed:** Yes  
**Contiguous:** Yes  
**Permitted:** Yes  
**Wet space:** No  
**Addition:** No  
**Conversion:** No