

## Home data report

223 Old Chester Road, Essex Fells, Essex County, New Jersey,  
United States, 07021



**Total Area: 5930 sq. ft**

Basement: 702 sq. ft, 1st Floor: 2826 sq. ft, 2nd Floor: 2402 sq. ft

Excluded: Storage 184 sq. ft, Utility 334 sq. ft, Basement crawl space 997 sq. ft, Garage 685 sq. ft, Porch 221 sq. ft, Deck 825 sq. ft, Fireplace 30 sq. ft, Walls: 432 sq. ft

## Property summary



**3**  
Floors



**8**  
Bedrooms



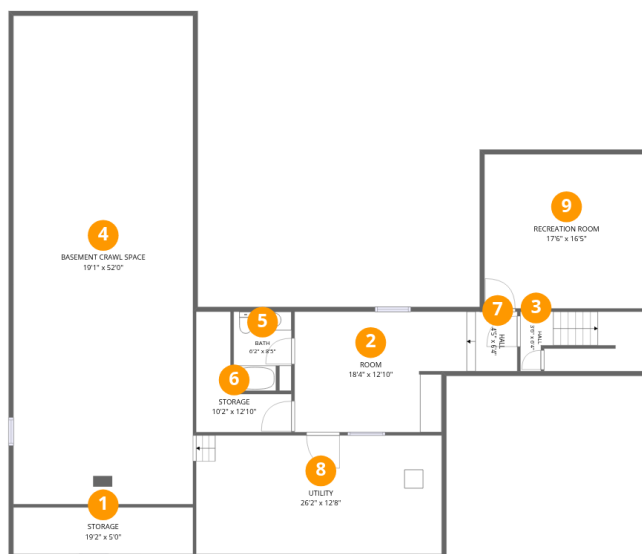
**6**  
Bathrooms



**1**  
Garages

Home data report

223 Old Chester Road, Essex Fells, Essex County, New Jersey, United States, 07021



## Room dimensions

Floor 1 Below grade

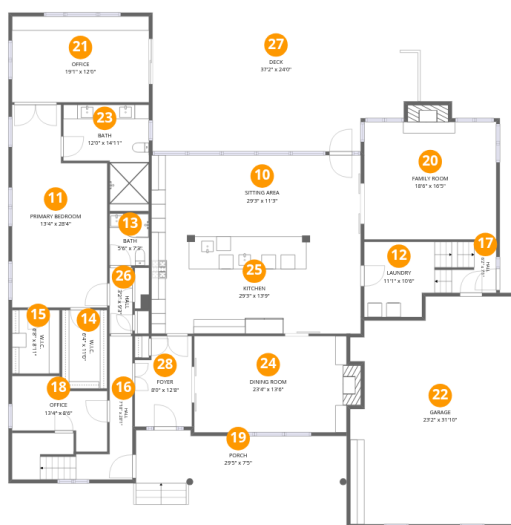
Total:702sqft

Excluded: 1515sqft

#		Dimensions	sqft	Counted as living area
1	Storage	19'2" x 5'0"	95 sq. ft	No
2	Room	18'4" x 12'10"	221 sq. ft	Yes
3	Hall	3'6" x 6'4"	83 sq. ft	Yes
4	Basement Crawl Space	19'1" x 52'0"	997 sq. ft	No
5	Bath	6'2" x 8'5"	51 sq. ft	Yes
6	Storage	10'2" x 12'10"	74 sq. ft	No
7	Hall	4'5" x 6'4"	30 sq. ft	Yes
8	Utility	26'2" x 12'8"	332 sq. ft	No
9	Recreation Room	17'6" x 16'5"	288 sq. ft	Yes

Home data report

223 Old Chester Road, Essex Fells, Essex County, New Jersey, United States, 07021



## Room dimensions

Floor 2

Total:2826sqft

Excluded: 1761sqft

#		Dimensions	sqft	Counted as living area
10	Sitting Area	29'3" x 11'3"	329 sq. ft	Yes
11	Primary Bedroom	13'4" x 28'4"	325 sq. ft	Yes
12	Laundry	11'1" x 10'6"	106 sq. ft	Yes
13	Bath	5'6" x 7'3"	40 sq. ft	Yes
14	W.I.C.	6'4" x 11'0"	69 sq. ft	Yes
15	W.I.C.	6'8" x 8'11"	59 sq. ft	Yes
16	Hall	7'10" x 20'1"	137 sq. ft	Yes
17	Hall	6'2" x 7'1"	53 sq. ft	Yes
18	Office	13'4" x 8'6"	101 sq. ft	Yes
19	Porch	29'5" x 7'5"	221 sq. ft	No
20	Family Room	18'6" x 16'5"	317 sq. ft	Yes

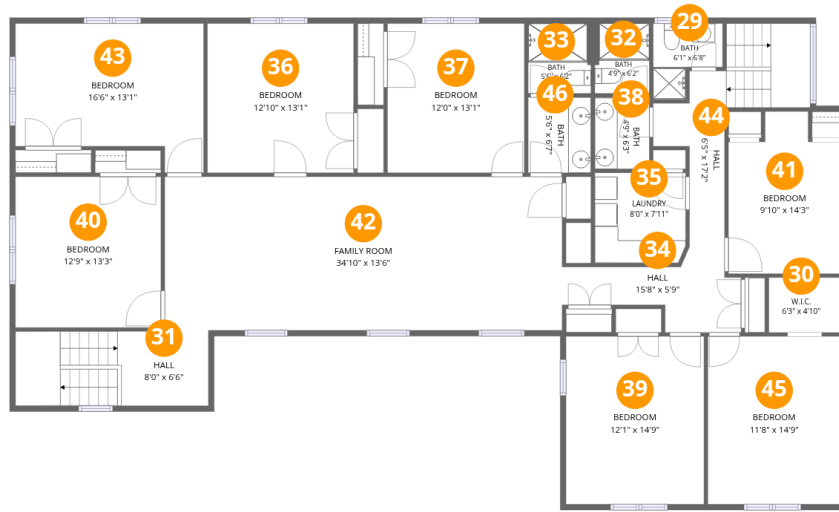
Home data report

**223 Old Chester Road, Essex Fells, Essex County, New Jersey,  
United States, 07021**

#		Dimensions	sqft	Counted as living area
21	Office	19'1" x 12'0"	230 sq. ft	Yes
22	Garage	23'2" x 31'10"	685 sq. ft	No
23	Bath	12'0" x 14'11"	133 sq. ft	Yes
24	Dining Room	23'4" x 13'6"	298 sq. ft	Yes
25	Kitchen	29'3" x 13'9"	402 sq. ft	Yes
26	Hall	3'2" x 9'3"	29 sq. ft	Yes
27	Deck	37'2" x 24'0"	825 sq. ft	No
28	Foyer	8'0" x 12'8"	93 sq. ft	Yes

Home data report

223 Old Chester Road, Essex Fells, Essex County, New Jersey, United States, 07021



## Room dimensions

Floor 3

Total:2402sqft

Excluded: 0sqft

#		Dimensions	sqft	Counted as living area
29	Bath	6'1" x 6'8"	31 sq. ft	Yes
30	W.I.C.	6'3" x 4'10"	30 sq. ft	Yes
31	Hall	8'0" x 6'6"	110 sq. ft	Yes
32	Bath	4'9" x 6'2"	29 sq. ft	Yes
33	Bath	5'6" x 6'2"	34 sq. ft	Yes
34	Hall	15'8" x 5'9"	67 sq. ft	Yes
35	Laundry	8'0" x 7'11"	63 sq. ft	Yes
36	Bedroom	12'10" x 13'1"	168 sq. ft	Yes
37	Bedroom	12'0" x 13'1"	157 sq. ft	Yes
38	Bath	4'9" x 6'3"	30 sq. ft	Yes
39	Bedroom	12'1" x 14'9"	178 sq. ft	Yes

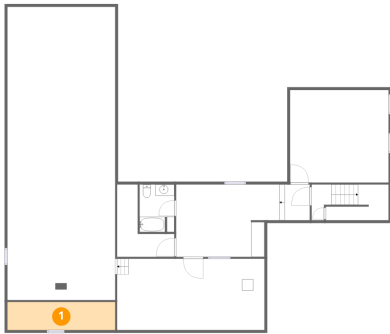
Home data report

**223 Old Chester Road, Essex Fells, Essex County, New Jersey,  
United States, 07021**

#		Dimensions	sqft	Counted as living area
40	Bedroom	12'9" x 13'3"	169 sq. ft	Yes
41	Bedroom	9'10" x 14'3"	124 sq. ft	Yes
42	Family Room	34'10" x 13'6"	469 sq. ft	Yes
43	Bedroom	16'6" x 13'1"	185 sq. ft	Yes
44	Hall	6'5" x 17'2"	120 sq. ft	Yes
45	Bedroom	11'8" x 14'9"	171 sq. ft	Yes
46	Bath	5'6" x 6'7"	36 sq. ft	Yes

223 Old Chester Road, Essex Fells, Essex County, New Jersey,  
United States, 07021

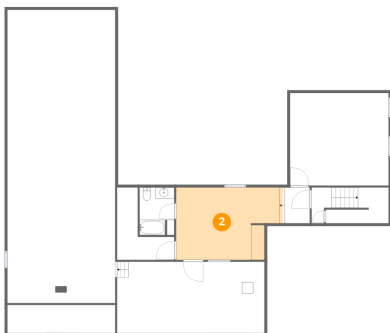
## 1 Floor 1 - Storage



Dimensions: 19'2" x 5'0"  
Area: 95 sq. ft  
Counted as living area: No

Heated: No  
Finished: No  
Enclosed: No  
Contiguous: No  
Permitted: Yes  
Wet space: No  
Addition: No  
Conversion: No

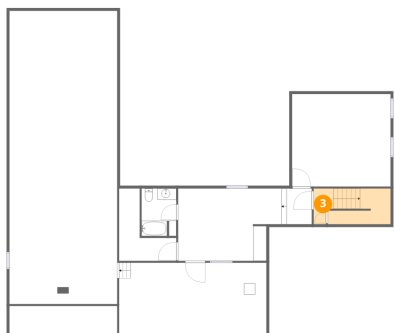
## 2 Floor 1 - Room



Dimensions: 18'4" x 12'10"  
Area: 221 sq. ft  
Counted as living area: Yes

Heated: Yes  
Finished: Yes  
Enclosed: Yes  
Contiguous: Yes  
Permitted: Yes  
Wet space: No  
Addition: No  
Conversion: No

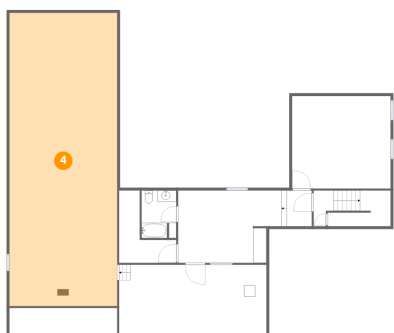
### 3 Floor 1 - Hall



Dimensions: 3'6" x 6'4"  
Area: 83 sq. ft  
Counted as living area: Yes

Heated: Yes  
Finished: Yes  
Enclosed: Yes  
Contiguous: Yes  
Permitted: Yes  
Wet space: No  
Addition: No  
Conversion: No

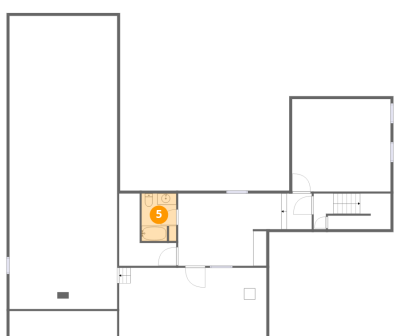
### 4 Floor 1 - Basement Crawl Space



Dimensions: 19'1" x 52'0"  
Area: 997 sq. ft  
Counted as living area: No

Heated: Yes  
Finished: No  
Enclosed: Yes  
Contiguous: Yes  
Permitted: Yes  
Wet space: No  
Addition: No  
Conversion: No

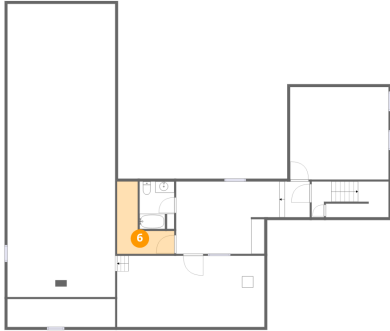
### 5 Floor 1 - Bath



Dimensions: 6'2" x 8'5"  
Area: 51 sq. ft  
Counted as living area: Yes

Heated: Yes  
Finished: Yes  
Enclosed: Yes  
Contiguous: Yes  
Permitted: Yes  
Wet space: Yes  
Addition: No  
Conversion: No

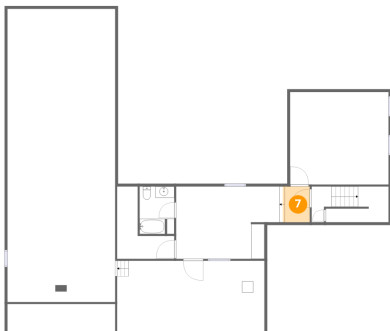
## 6 Floor 1 - Storage



Dimensions: 10'2" x 12'10"  
Area: 74 sq. ft  
Counted as living area: No

Heated: No  
Finished: No  
Enclosed: No  
Contiguous: No  
Permitted: Yes  
Wet space: No  
Addition: No  
Conversion: No

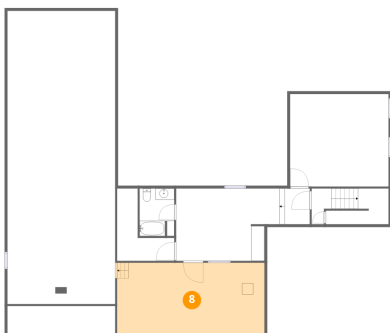
## 7 Floor 1 - Hall



Dimensions: 4'5" x 6'4"  
Area: 30 sq. ft  
Counted as living area: Yes

Heated: Yes  
Finished: Yes  
Enclosed: Yes  
Contiguous: Yes  
Permitted: Yes  
Wet space: No  
Addition: No  
Conversion: No

## 8 Floor 1 - Utility



Dimensions: 26'2" x 12'8"  
Area: 332 sq. ft  
Counted as living area: No

Heated: Yes  
Finished: No  
Enclosed: Yes  
Contiguous: Yes  
Permitted: Yes  
Wet space: No  
Addition: No  
Conversion: No

223 Old Chester Road, Essex Fells, Essex County, New Jersey,  
United States, 07021

## 9 Floor 1 - Recreation Room



Dimensions: 17'6" x 16'5"  
Area: 288 sq. ft  
Counted as living area: Yes

Heated: Yes  
Finished: Yes  
Enclosed: Yes  
Contiguous: Yes  
Permitted: Yes  
Wet space: No  
Addition: No  
Conversion: No

## 10 Floor 2 - Sitting Area



Dimensions: 29'3" x 11'3"  
Area: 329 sq. ft  
Counted as living area: Yes

Heated: Yes  
Finished: Yes  
Enclosed: Yes  
Contiguous: Yes  
Permitted: Yes  
Wet space: No  
Addition: No  
Conversion: No

## 11 Floor 2 - Primary Bedroom



Dimensions: 13'4" x 28'4"  
Area: 325 sq. ft  
Counted as living area: Yes

Heated: Yes  
Finished: Yes  
Enclosed: Yes  
Contiguous: Yes  
Permitted: Yes  
Wet space: No  
Addition: No  
Conversion: No

**12** Floor 2 - Laundry



Dimensions: 11'1" x 10'6"  
Area: 106 sq. ft  
Counted as living area: Yes

Heated: Yes  
Finished: Yes  
Enclosed: Yes  
Contiguous: Yes  
Permitted: Yes  
Wet space: No  
Addition: No  
Conversion: No

**13** Floor 2 - Bath



Dimensions: 5'6" x 7'3"  
Area: 40 sq. ft  
Counted as living area: Yes

Heated: Yes  
Finished: Yes  
Enclosed: Yes  
Contiguous: Yes  
Permitted: Yes  
Wet space: Yes  
Addition: No  
Conversion: No

**14** Floor 2 - W.I.C.



Dimensions: 6'4" x 11'0"  
Area: 69 sq. ft  
Counted as living area: Yes

Heated: Yes  
Finished: Yes  
Enclosed: Yes  
Contiguous: Yes  
Permitted: Yes  
Wet space: No  
Addition: No  
Conversion: No

**15** Floor 2 - W.I.C.



Dimensions: 6'8" x 8'11"  
Area: 59 sq. ft  
Counted as living area: Yes

Heated: Yes  
Finished: Yes  
Enclosed: Yes  
Contiguous: Yes  
Permitted: Yes  
Wet space: No  
Addition: No  
Conversion: No

**16** Floor 2 - Hall



Dimensions: 7'10" x 20'1"  
Area: 137 sq. ft  
Counted as living area: Yes

Heated: Yes  
Finished: Yes  
Enclosed: Yes  
Contiguous: Yes  
Permitted: Yes  
Wet space: No  
Addition: No  
Conversion: No

**17** Floor 2 - Hall



Dimensions: 6'2" x 7'1"  
Area: 53 sq. ft  
Counted as living area: Yes

Heated: Yes  
Finished: Yes  
Enclosed: Yes  
Contiguous: Yes  
Permitted: Yes  
Wet space: No  
Addition: No  
Conversion: No

**18** Floor 2 - Office



Dimensions: 13'4" x 8'6"  
Area: 101 sq. ft  
Counted as living area: Yes

Heated: Yes  
Finished: Yes  
Enclosed: Yes  
Contiguous: Yes  
Permitted: Yes  
Wet space: No  
Addition: No  
Conversion: No

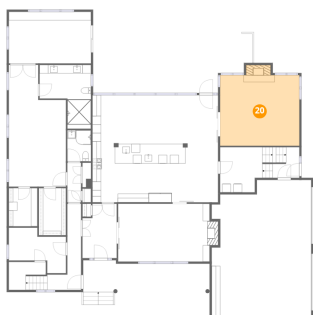
**19** Floor 2 - Porch



Dimensions: 29'5" x 7'5"  
Area: 221 sq. ft  
Counted as living area: No

Heated: No  
Finished: No  
Enclosed: No  
Contiguous: Yes  
Permitted: Yes  
Wet space: No  
Addition: No  
Conversion: No

**20** Floor 2 - Family Room



Dimensions: 18'6" x 16'5"  
Area: 317 sq. ft  
Counted as living area: Yes

Heated: Yes  
Finished: Yes  
Enclosed: Yes  
Contiguous: Yes  
Permitted: Yes  
Wet space: No  
Addition: No  
Conversion: No

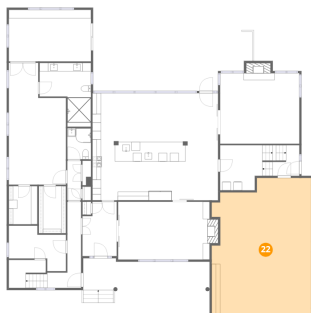
**21** Floor 2 - Office



Dimensions: 19'1" x 12'0"  
Area: 230 sq. ft  
Counted as living area: Yes

Heated: Yes  
Finished: Yes  
Enclosed: Yes  
Contiguous: Yes  
Permitted: Yes  
Wet space: No  
Addition: No  
Conversion: No

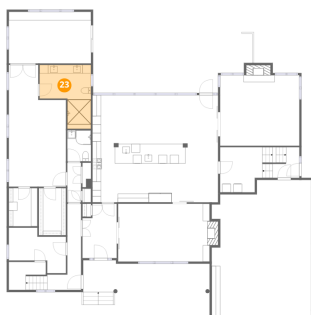
**22** Floor 2 - Garage



Dimensions: 23'2" x 31'10"  
Area: 685 sq. ft  
Counted as living area: No

Heated: No  
Finished: No  
Enclosed: Yes  
Contiguous: Yes  
Permitted: Yes  
Wet space: No  
Addition: No  
Conversion: No

**23** Floor 2 - Bath



Dimensions: 12'0" x 14'11"  
Area: 133 sq. ft  
Counted as living area: Yes

Heated: Yes  
Finished: Yes  
Enclosed: Yes  
Contiguous: Yes  
Permitted: Yes  
Wet space: Yes  
Addition: No  
Conversion: No

223 Old Chester Road, Essex Fells, Essex County, New Jersey,  
United States, 07021

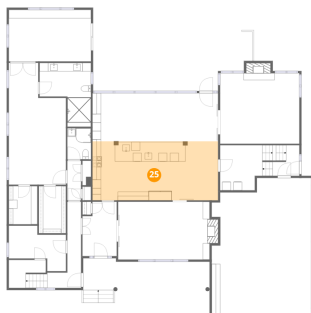
## 24 Floor 2 - Dining Room



Dimensions: 23'4" x 13'6"  
Area: 298 sq. ft  
Counted as living area: Yes

Heated: Yes  
Finished: Yes  
Enclosed: Yes  
Contiguous: Yes  
Permitted: Yes  
Wet space: No  
Addition: No  
Conversion: No

## 25 Floor 2 - Kitchen



Dimensions: 29'3" x 13'9"  
Area: 402 sq. ft  
Counted as living area: Yes

Heated: Yes  
Finished: Yes  
Enclosed: Yes  
Contiguous: Yes  
Permitted: Yes  
Wet space: No  
Addition: No  
Conversion: No

## 26 Floor 2 - Hall



Dimensions: 3'2" x 9'3"  
Area: 29 sq. ft  
Counted as living area: Yes

Heated: Yes  
Finished: Yes  
Enclosed: Yes  
Contiguous: Yes  
Permitted: Yes  
Wet space: No  
Addition: No  
Conversion: No

## 27 Floor 2 - Deck



Dimensions: 37'2" x 24'0"  
Area: 825 sq. ft  
Counted as living area: No

Heated: No  
Finished: No  
Enclosed: No  
Contiguous: Yes  
Permitted: Yes  
Wet space: No  
Addition: No  
Conversion: No

## 28 Floor 2 - Foyer



Dimensions: 8'0" x 12'8"  
Area: 93 sq. ft  
Counted as living area: Yes

Heated: Yes  
Finished: Yes  
Enclosed: Yes  
Contiguous: Yes  
Permitted: Yes  
Wet space: No  
Addition: No  
Conversion: No

## 29 Floor 3 - Bath



Dimensions: 6'1" x 6'8"  
Area: 31 sq. ft  
Counted as living area: Yes

Heated: Yes  
Finished: Yes  
Enclosed: Yes  
Contiguous: Yes  
Permitted: Yes  
Wet space: Yes  
Addition: No  
Conversion: No

**30** Floor 3 - W.I.C.



Dimensions: 6'3" x 4'10"  
Area: 30 sq. ft  
Counted as living area: Yes

Heated: Yes  
Finished: Yes  
Enclosed: Yes  
Contiguous: Yes  
Permitted: Yes  
Wet space: No  
Addition: No  
Conversion: No

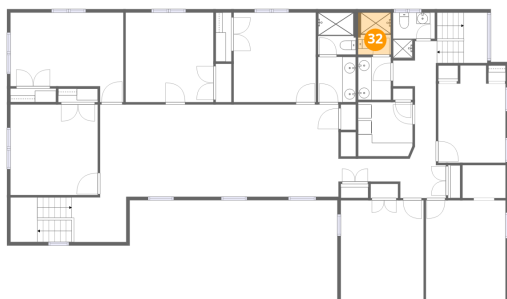
**31** Floor 3 - Hall



Dimensions: 8'0" x 6'6"  
Area: 110 sq. ft  
Counted as living area: Yes

Heated: Yes  
Finished: Yes  
Enclosed: Yes  
Contiguous: Yes  
Permitted: Yes  
Wet space: No  
Addition: No  
Conversion: No

**32** Floor 3 - Bath



Dimensions: 4'9" x 6'2"  
Area: 29 sq. ft  
Counted as living area: Yes

Heated: Yes  
Finished: Yes  
Enclosed: Yes  
Contiguous: Yes  
Permitted: Yes  
Wet space: Yes  
Addition: No  
Conversion: No

**33** Floor 3 - Bath



Dimensions: 5'6" x 6'2"  
Area: 34 sq. ft  
Counted as living area: Yes

Heated: Yes  
Finished: Yes  
Enclosed: Yes  
Contiguous: Yes  
Permitted: Yes  
Wet space: Yes  
Addition: No  
Conversion: No

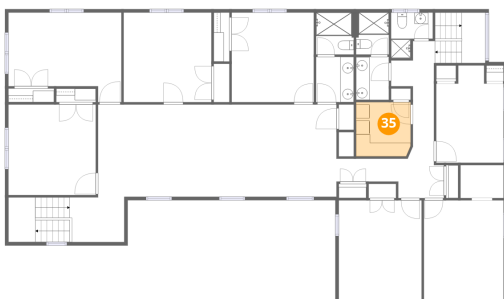
**34** Floor 3 - Hall



Dimensions: 15'8" x 5'9"  
Area: 67 sq. ft  
Counted as living area: Yes

Heated: Yes  
Finished: Yes  
Enclosed: Yes  
Contiguous: Yes  
Permitted: Yes  
Wet space: No  
Addition: No  
Conversion: No

**35** Floor 3 - Laundry



Dimensions: 8'0" x 7'11"  
Area: 63 sq. ft  
Counted as living area: Yes

Heated: Yes  
Finished: Yes  
Enclosed: Yes  
Contiguous: Yes  
Permitted: Yes  
Wet space: No  
Addition: No  
Conversion: No

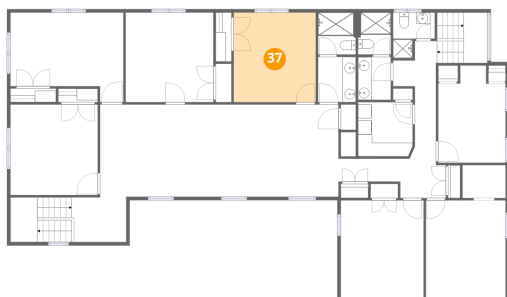
**36** Floor 3 - Bedroom



Dimensions: 12'10" x 13'1"  
Area: 168 sq. ft  
Counted as living area: Yes

Heated: Yes  
Finished: Yes  
Enclosed: Yes  
Contiguous: Yes  
Permitted: Yes  
Wet space: No  
Addition: No  
Conversion: No

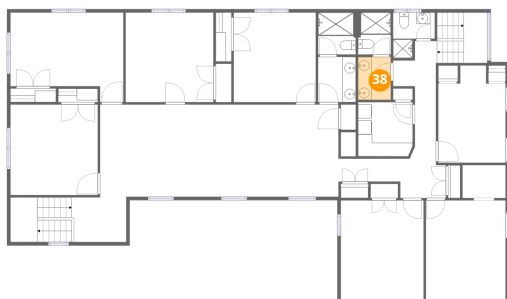
**37** Floor 3 - Bedroom



Dimensions: 12'0" x 13'1"  
Area: 157 sq. ft  
Counted as living area: Yes

Heated: Yes  
Finished: Yes  
Enclosed: Yes  
Contiguous: Yes  
Permitted: Yes  
Wet space: No  
Addition: No  
Conversion: No

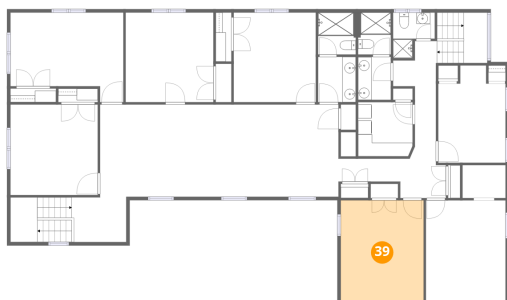
**38** Floor 3 - Bath



Dimensions: 4'9" x 6'3"  
Area: 30 sq. ft  
Counted as living area: Yes

Heated: Yes  
Finished: Yes  
Enclosed: Yes  
Contiguous: Yes  
Permitted: Yes  
Wet space: Yes  
Addition: No  
Conversion: No

**39** Floor 3 - Bedroom



Dimensions: 12'1" x 14'9"  
Area: 178 sq. ft  
Counted as living area: Yes

Heated: Yes  
Finished: Yes  
Enclosed: Yes  
Contiguous: Yes  
Permitted: Yes  
Wet space: No  
Addition: No  
Conversion: No

**40** Floor 3 - Bedroom



Dimensions: 12'9" x 13'3"  
Area: 169 sq. ft  
Counted as living area: Yes

Heated: Yes  
Finished: Yes  
Enclosed: Yes  
Contiguous: Yes  
Permitted: Yes  
Wet space: No  
Addition: No  
Conversion: No

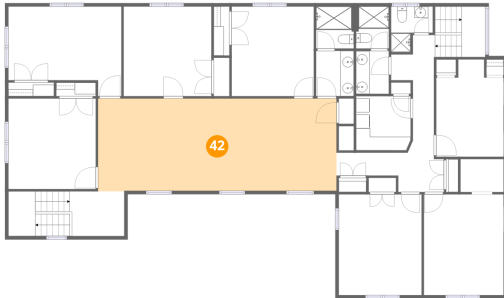
**41** Floor 3 - Bedroom



Dimensions: 9'10" x 14'3"  
Area: 124 sq. ft  
Counted as living area: Yes

Heated: Yes  
Finished: Yes  
Enclosed: Yes  
Contiguous: Yes  
Permitted: Yes  
Wet space: No  
Addition: No  
Conversion: No

**42** Floor 3 - Family Room



Dimensions: 34'10" x 13'6"  
Area: 469 sq. ft  
Counted as living area: Yes

Heated: Yes  
Finished: Yes  
Enclosed: Yes  
Contiguous: Yes  
Permitted: Yes  
Wet space: No  
Addition: No  
Conversion: No

**43** Floor 3 - Bedroom



Dimensions: 16'6" x 13'1"  
Area: 185 sq. ft  
Counted as living area: Yes

Heated: Yes  
Finished: Yes  
Enclosed: Yes  
Contiguous: Yes  
Permitted: Yes  
Wet space: No  
Addition: No  
Conversion: No

**44** Floor 3 - Hall



Dimensions: 6'5" x 17'2"  
Area: 120 sq. ft  
Counted as living area: Yes

Heated: Yes  
Finished: Yes  
Enclosed: Yes  
Contiguous: Yes  
Permitted: Yes  
Wet space: No  
Addition: No  
Conversion: No

223 Old Chester Road, Essex Fells, Essex County, New Jersey,  
United States, 07021

**45** Floor 3 - Bedroom

---



Dimensions: 11'8" x 14'9"  
Area: 171 sq. ft  
Counted as living area: Yes

Heated: Yes  
Finished: Yes  
Enclosed: Yes  
Contiguous: Yes  
Permitted: Yes  
Wet space: No  
Addition: No  
Conversion: No

**46** Floor 3 - Bath

---



Dimensions: 5'6" x 6'7"  
Area: 36 sq. ft  
Counted as living area: Yes

Heated: Yes  
Finished: Yes  
Enclosed: Yes  
Contiguous: Yes  
Permitted: Yes  
Wet space: Yes  
Addition: No  
Conversion: No