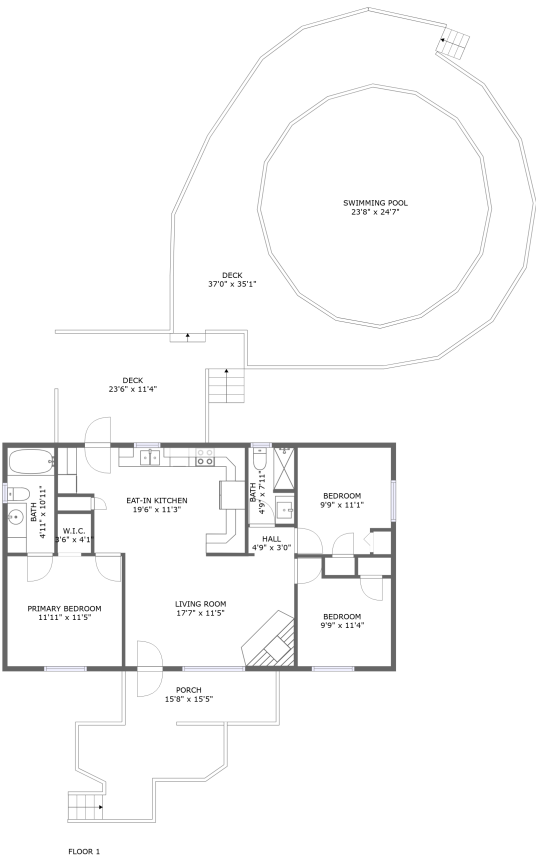


Home report

1030 Healing Springs Road, Blue Ridge, Botetourt County,
Virginia, United States, 24064




Total Area: 906 sq. ft

Floor 1: 906 sq. ft

Excluded: Porch 196 sq. ft, Deck 843 sq. ft, Walls: 64 sq. ft

Property summary

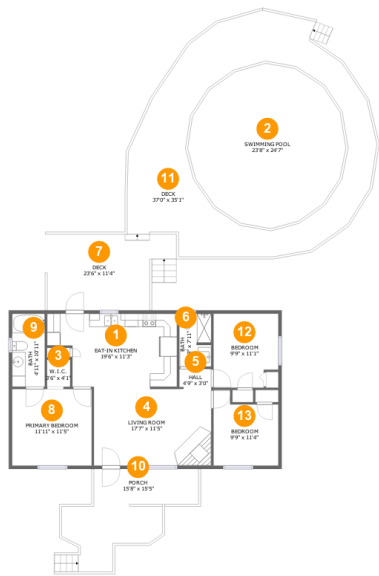
 1 Floors

 3 Bedrooms

 2 Bathrooms

Home report

1030 Healing Springs Road, Blue Ridge, Botetourt County,
Virginia, United States, 24064



Room dimensions

Floor 1 Total:906sqft Excluded: 1039sqft

#		Max Dimensions	sqft	Included
1	Eat-in Kitchen	19'6" x 11'3"	193 sq. ft	Yes
2	Swimming Pool	23'8" x 24'7"	446 sq. ft	No
3	W.I.C.	3'6" x 4'1"	14 sq. ft	Yes
4	Living Room	17'7" x 11'5"	201 sq. ft	Yes
5	Hall	4'9" x 3'0"	14 sq. ft	Yes
6	Bath	4'9" x 7'11"	37 sq. ft	Yes
7	Deck	23'6" x 11'4"	227 sq. ft	No
8	Primary Bedroom	11'11" x 11'5"	136 sq. ft	Yes
9	Bath	4'11" x 10'11"	54 sq. ft	Yes
10	Porch	15'8" x 15'5"	196 sq. ft	No
11	Deck	37'0" x 35'1"	1062 sq. ft	No

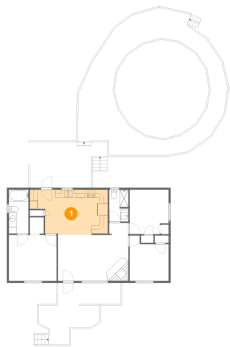
Home report

1030 Healing Springs Road, Blue Ridge, Botetourt County,
Virginia, United States, 24064

#		Max Dimensions	sqft	Included
12	Bedroom	9'9" x 11'1"	102 sq. ft	Yes
13	Bedroom	9'9" x 11'4"	94 sq. ft	Yes

1030 Healing Springs Road, Blue Ridge, Botetourt County,
Virginia, United States, 24064

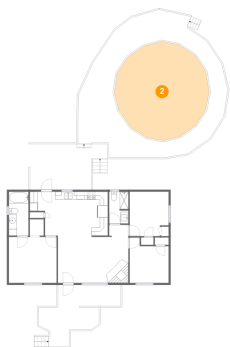
1 Floor 1 - Eat-in Kitchen



Max Dimensions: 19'6" x 11'3"
Calculated Area: 193 sq. ft
Included: Yes

Heated: Yes
Finished: Yes
Enclosed: Yes
Contiguous: Yes
Permitted: Yes
Wet space: No
Addition: No
Conversion: No

2 Floor 1 - Swimming Pool

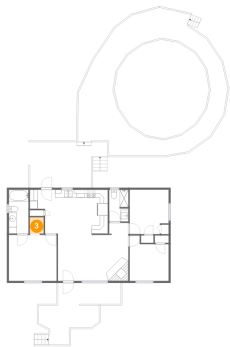


Max Dimensions: 23'8" x 24'7"
Calculated Area: 446 sq. ft
Included: No

Heated: No
Finished: No
Enclosed: No
Contiguous: Yes
Permitted: No
Wet space: No
Addition: No
Conversion: No

1030 Healing Springs Road, Blue Ridge, Botetourt County,
Virginia, United States, 24064

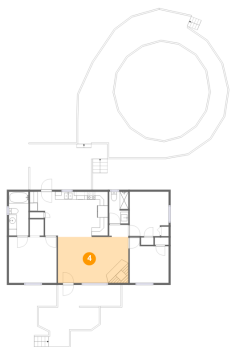
3 Floor 1 - W.I.C.



Max Dimensions: 3'6" x 4'1"
Calculated Area: 14 sq. ft
Included: Yes

Heated: Yes
Finished: Yes
Enclosed: Yes
Contiguous: Yes
Permitted: Yes
Wet space: No
Addition: No
Conversion: No

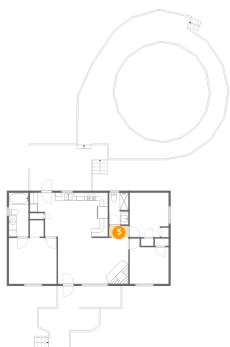
4 Floor 1 - Living Room



Max Dimensions: 17'7" x 11'5"
Calculated Area: 201 sq. ft
Included: Yes

Heated: Yes
Finished: Yes
Enclosed: Yes
Contiguous: Yes
Permitted: Yes
Wet space: No
Addition: No
Conversion: No

5 Floor 1 - Hall

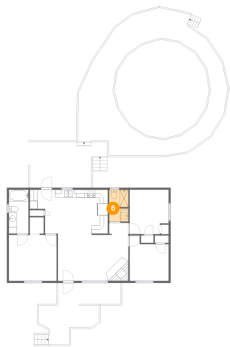


Max Dimensions: 4'9" x 3'0"
Calculated Area: 14 sq. ft
Included: Yes

Heated: Yes
Finished: Yes
Enclosed: Yes
Contiguous: Yes
Permitted: Yes
Wet space: No
Addition: No
Conversion: No

1030 Healing Springs Road, Blue Ridge, Botetourt County,
Virginia, United States, 24064

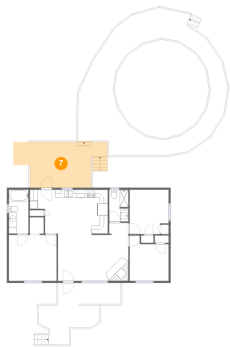
6 Floor 1 - Bath



Max Dimensions: 4'9" x 7'11"
Calculated Area: 37 sq. ft
Included: Yes

Heated: Yes
Finished: Yes
Enclosed: Yes
Contiguous: Yes
Permitted: Yes
Wet space: Yes
Addition: No
Conversion: No

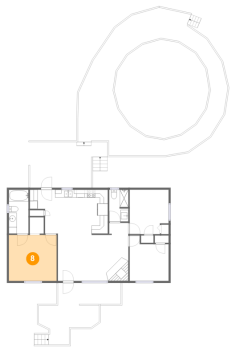
7 Floor 1 - Deck



Max Dimensions: 23'6" x 11'4"
Calculated Area: 227 sq. ft
Included: No

Heated: No
Finished: Yes
Enclosed: No
Contiguous: Yes
Permitted: Yes
Wet space: No
Addition: No
Conversion: No

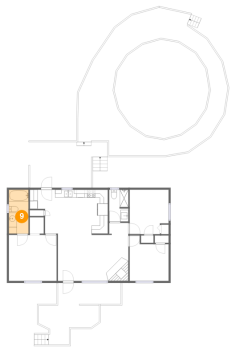
8 Floor 1 - Primary Bedroom



Max Dimensions: 11'11" x 11'5"
Calculated Area: 136 sq. ft
Included: Yes

Heated: Yes
Finished: Yes
Enclosed: Yes
Contiguous: Yes
Permitted: Yes
Wet space: No
Addition: No
Conversion: No

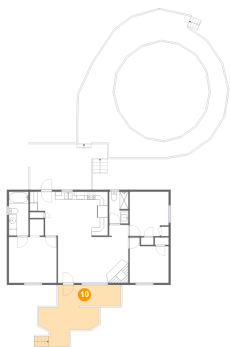
9 Floor 1 - Bath



Max Dimensions: 4'11" x 10'11"
Calculated Area: 54 sq. ft
Included: Yes

Heated: Yes
Finished: Yes
Enclosed: Yes
Contiguous: Yes
Permitted: Yes
Wet space: Yes
Addition: No
Conversion: No

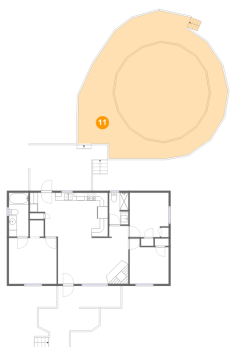
10 Floor 1 - Porch



Max Dimensions: 15'8" x 15'5"
Calculated Area: 196 sq. ft
Included: No

Heated: No
Finished: Yes
Enclosed: No
Contiguous: Yes
Permitted: Yes
Wet space: No
Addition: No
Conversion: No

11 Floor 1 - Deck

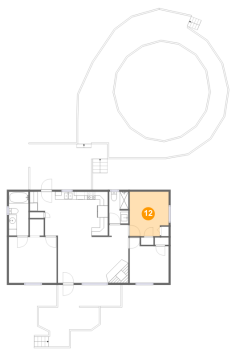


Max Dimensions: 37'0" x 35'1"
Calculated Area: 1062 sq. ft
Included: No

Heated: No
Finished: Yes
Enclosed: No
Contiguous: Yes
Permitted: Yes
Wet space: No
Addition: No
Conversion: No

1030 Healing Springs Road, Blue Ridge, Botetourt County,
Virginia, United States, 24064

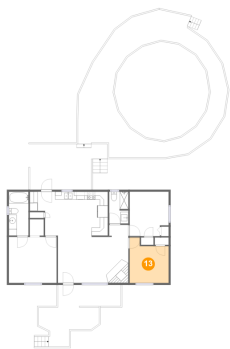
12 Floor 1 - Bedroom



Max Dimensions: 9'9" x
11'1"
Calculated Area: 102 sq. ft
Included: Yes

Heated: Yes
Finished: Yes
Enclosed: Yes
Contiguous:
Yes
Permitted: Yes
Wet space: No
Addition: No
Conversion: No

13 Floor 1 - Bedroom



Max Dimensions: 9'9" x
11'4"
Calculated Area: 94 sq. ft
Included: Yes

Heated: Yes
Finished: Yes
Enclosed: Yes
Contiguous:
Yes
Permitted: Yes
Wet space: No
Addition: No
Conversion: No