

Home data report

11746 Tenth Line,Whitchurch-Stouffville,ON,CA



Total Area: 1417 sq. ft

Basement: 80 sq. ft, 1st Floor: 668 sq. ft, 2nd Floor: 669 sq. ft

Excluded: Basement 246 sq. ft, Garage 334 sq. ft, Walls: 147 sq. ft

Property summary

 **3** Floors

 **3** Bedrooms

 **2** Bathrooms

Home data report

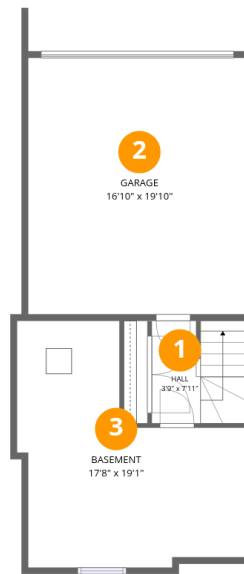
11746 Tenth Line,Whitchurch-Stouffville,ON,CA

 **1**
Half baths

 **1**
Garages

Home data report

11746 Tenth Line,Whitchurch-Stouffville,ON,CA



Room dimensions

Floor 1 Below grade

Total:80sqft

Excluded: 580sqft

#		Dimensions	sqft	Counted as living area
1	Hall	3'9" x 7'11"	56 sq. ft	Yes
2	Garage	16'10" x 19'10"	334 sq. ft	No
3	Basement	17'8" x 19'1"	245 sq. ft	No



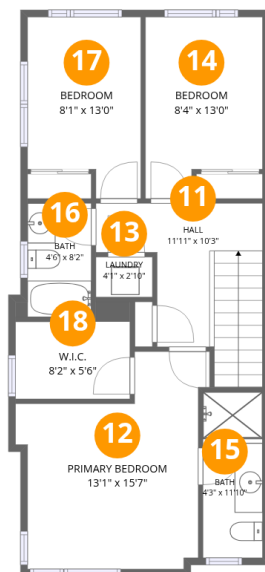
Room dimensions

Floor 2

Total:668sqft

Excluded: 0sqft

#		Dimensions	sqft	Counted as living area
4	Living Room	17'8" x 15'11"	243 sq. ft	Yes
5	Hall	11'11" x 3'9"	45 sq. ft	Yes
6	Family Room	8'4" x 12'11"	108 sq. ft	Yes
7	Kitchen	8'5" x 12'11"	110 sq. ft	Yes
8	Foyer	5'4" x 4'10"	34 sq. ft	Yes
9	Bath	4'7" x 6'9"	30 sq. ft	Yes
10	Dining Area	11'2" x 6'9"	76 sq. ft	Yes



Room dimensions

Floor 3

Total:669sqft Excluded: 0sqft

#		Dimensions	sqft	Counted as living area
11	Hall	11'11" x 10'3"	103 sq. ft	Yes
12	Primary Bedroom	13'1" x 15'7"	165 sq. ft	Yes
13	Laundry	4'1" x 2'10"	12 sq. ft	Yes
14	Bedroom	8'4" x 13'0"	98 sq. ft	Yes
15	Bath	4'3" x 11'10"	51 sq. ft	Yes
16	Bath	4'6" x 8'2"	38 sq. ft	Yes
17	Bedroom	8'1" x 13'0"	95 sq. ft	Yes
18	W.I.C.	8'2" x 5'6"	49 sq. ft	Yes

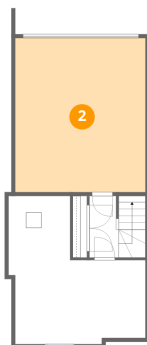
1 Floor 1 - Hall



Dimensions: 3'9" x 7'11"
Area: 56 sq. ft
Counted as living area: Yes

Heated: Yes
Finished: Yes
Enclosed: Yes
Contiguous: Yes
Permitted: Yes
Wet space: No
Addition: No
Conversion: No

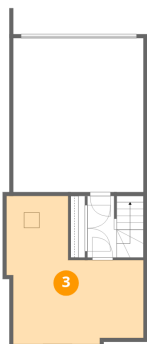
2 Floor 1 - Garage



Dimensions: 16'10" x 19'10"
Area: 334 sq. ft
Counted as living area: No

Heated: No
Finished: No
Enclosed: Yes
Contiguous: Yes
Permitted: Yes
Wet space: No
Addition: No
Conversion: No

3 Floor 1 - Basement



Dimensions: 17'8" x 19'1"
Area: 245 sq. ft
Counted as living area: No

Heated: Yes
Finished: No
Enclosed: Yes
Contiguous: Yes
Permitted: Yes
Wet space: No
Addition: No
Conversion: No

4 Floor 2 - Living Room



Dimensions: 17'8" x 15'11"
Area: 243 sq. ft
Counted as living area: Yes

Heated: Yes
Finished: Yes
Enclosed: Yes
Contiguous: Yes
Permitted: Yes
Wet space: No
Addition: No
Conversion: No

5 Floor 2 - Hall



Dimensions: 11'11" x 3'9"
Area: 45 sq. ft
Counted as living area: Yes

Heated: Yes
Finished: Yes
Enclosed: Yes
Contiguous: Yes
Permitted: Yes
Wet space: No
Addition: No
Conversion: No

6 Floor 2 - Family Room



Dimensions: 8'4" x 12'11"
Area: 108 sq. ft
Counted as living area: Yes

Heated: Yes
Finished: Yes
Enclosed: Yes
Contiguous: Yes
Permitted: Yes
Wet space: No
Addition: No
Conversion: No

7 Floor 2 - Kitchen



Dimensions: 8'5" x 12'11"
Area: 110 sq. ft
Counted as living area: Yes

Heated: Yes
Finished: Yes
Enclosed: Yes
Contiguous: Yes
Permitted: Yes
Wet space: No
Addition: No
Conversion: No

8 Floor 2 - Foyer



Dimensions: 5'4" x 4'10"
Area: 34 sq. ft
Counted as living area: Yes

Heated: Yes
Finished: Yes
Enclosed: Yes
Contiguous: Yes
Permitted: Yes
Wet space: No
Addition: No
Conversion: No

9 Floor 2 - Bath



Dimensions: 4'7" x 6'9"
Area: 30 sq. ft
Counted as living area: Yes

Heated: Yes
Finished: Yes
Enclosed: Yes
Contiguous: Yes
Permitted: Yes
Wet space: Yes
Addition: No
Conversion: No

10 Floor 2 - Dining Area



Dimensions: 11'2" x 6'9"
Area: 76 sq. ft
Counted as living area: Yes

Heated: Yes
Finished: Yes
Enclosed: Yes
Contiguous: Yes
Permitted: Yes
Wet space: No
Addition: No
Conversion: No

11 Floor 3 - Hall



Dimensions: 11'11" x 10'3"
Area: 103 sq. ft
Counted as living area: Yes

Heated: Yes
Finished: Yes
Enclosed: Yes
Contiguous: Yes
Permitted: Yes
Wet space: No
Addition: No
Conversion: No

12 Floor 3 - Primary Bedroom



Dimensions: 13'1" x 15'7"
Area: 165 sq. ft
Counted as living area: Yes

Heated: Yes
Finished: Yes
Enclosed: Yes
Contiguous: Yes
Permitted: Yes
Wet space: No
Addition: No
Conversion: No

13 Floor 3 - Laundry



Dimensions: 4'1" x 2'10"
Area: 12 sq. ft
Counted as living area: Yes

Heated: Yes
Finished: Yes
Enclosed: Yes
Contiguous: Yes
Permitted: Yes
Wet space: No
Addition: No
Conversion: No

14 Floor 3 - Bedroom



Dimensions: 8'4" x 13'0"
Area: 98 sq. ft
Counted as living area: Yes

Heated: Yes
Finished: Yes
Enclosed: Yes
Contiguous: Yes
Permitted: Yes
Wet space: No
Addition: No
Conversion: No

15 Floor 3 - Bath



Dimensions: 4'3" x 11'10"
Area: 51 sq. ft
Counted as living area: Yes

Heated: Yes
Finished: Yes
Enclosed: Yes
Contiguous: Yes
Permitted: Yes
Wet space: Yes
Addition: No
Conversion: No

16 Floor 3 - Bath



Dimensions: 4'6" x 8'2"
Area: 38 sq. ft
Counted as living area: Yes

Heated: Yes
Finished: Yes
Enclosed: Yes
Contiguous: Yes
Permitted: Yes
Wet space: Yes
Addition: No
Conversion: No

17 Floor 3 - Bedroom



Dimensions: 8'1" x 13'0"
Area: 95 sq. ft
Counted as living area: Yes

Heated: Yes
Finished: Yes
Enclosed: Yes
Contiguous: Yes
Permitted: Yes
Wet space: No
Addition: No
Conversion: No

18 Floor 3 - W.I.C.



Dimensions: 8'2" x 5'6"
Area: 49 sq. ft
Counted as living area: Yes

Heated: Yes
Finished: Yes
Enclosed: Yes
Contiguous: Yes
Permitted: Yes
Wet space: No
Addition: No
Conversion: No