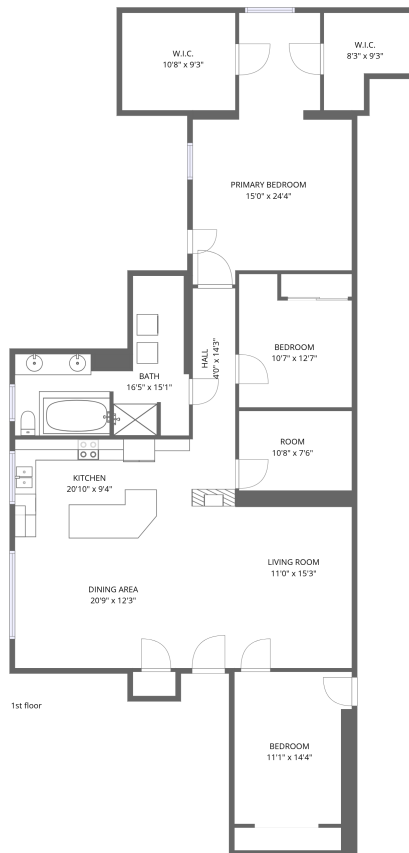


Home data report

10257 State Route 31, Galen, Clyde, Wayne County, New York, United States, 14433, Upstairs Apartment



Total Area: 1670 sq. ft

1st Floor: 1670 sq. ft

Excluded: Low ceiling 83 sq. ft, Walls: 0 sq. ft

Property summary



1 Floors



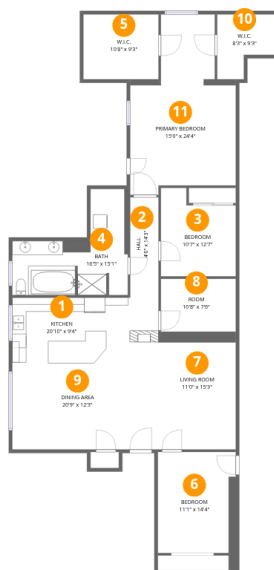
3 Bedrooms



1 Bathrooms

Home data report

10257 State Route 31, Galen, Clyde, Wayne County, New York, United States, 14433, Upstairs Apartment



Room dimensions

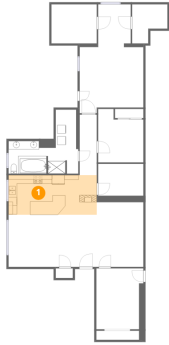
Floor 1

Total:1670sqft Excluded: 83sqft

#		Dimensions	sqft	Counted as living area
1	Kitchen	20'10" x 9'4"	194 sq. ft	Yes
2	Hall	4'0" x 14'3"	57 sq. ft	Yes
3	Bedroom	10'7" x 12'7"	133 sq. ft	Yes
4	Bath	16'5" x 15'1"	247 sq. ft	Yes
5	W.I.C.	10'8" x 9'3"	98 sq. ft	Yes
6	Bedroom	11'1" x 14'4"	159 sq. ft	Yes
7	Living Room	11'0" x 15'3"	167 sq. ft	Yes
8	Room	10'8" x 7'6"	80 sq. ft	Yes
9	Dining Area	20'9" x 12'3"	254 sq. ft	Yes
10	W.I.C.	8'3" x 9'3"	76 sq. ft	Yes
11	Primary Bedroom	15'0" x 24'4"	365 sq. ft	Yes

10257 State Route 31, Galen, Clyde, Wayne County, New York,
United States, 14433, Upstairs Apartment

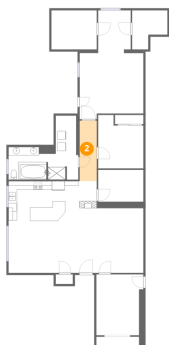
1 Floor 1 - Kitchen



Dimensions: 20'10" x 9'4"
Area: 194 sq. ft
Counted as living area: Yes

Heated: Yes
Finished: Yes
Enclosed: Yes
Contiguous: Yes
Permitted: Yes
Wet space: No
Addition: No
Conversion: No

2 Floor 1 - Hall

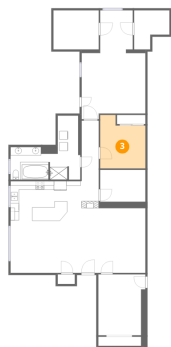


Dimensions: 4'0" x 14'3"
Area: 57 sq. ft
Counted as living area: Yes

Heated: Yes
Finished: Yes
Enclosed: Yes
Contiguous: Yes
Permitted: Yes
Wet space: No
Addition: No
Conversion: No

10257 State Route 31, Galen, Clyde, Wayne County, New York, United States, 14433, Upstairs Apartment

3 Floor 1 - Bedroom



Dimensions: 10'7" x 12'7"
Area: 133 sq. ft
Counted as living area: Yes

Heated: Yes
Finished: Yes
Enclosed: Yes
Contiguous: Yes
Permitted: Yes
Wet space: No
Addition: No
Conversion: No

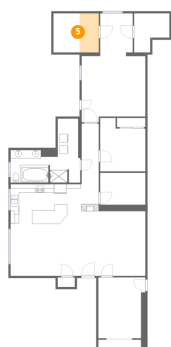
4 Floor 1 - Bath



Dimensions: 16'5" x 15'1"
Area: 247 sq. ft
Counted as living area: Yes

Heated: Yes
Finished: Yes
Enclosed: Yes
Contiguous: Yes
Permitted: Yes
Wet space: Yes
Addition: No
Conversion: No

5 Floor 1 - W.I.C.

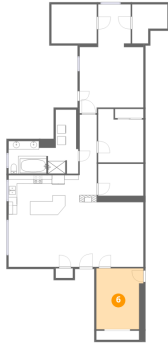


Dimensions: 10'8" x 9'3"
Area: 98 sq. ft
Counted as living area: Yes

Heated: Yes
Finished: Yes
Enclosed: Yes
Contiguous: Yes
Permitted: Yes
Wet space: No
Addition: No
Conversion: No

10257 State Route 31, Galen, Clyde, Wayne County, New York,
United States, 14433, Upstairs Apartment

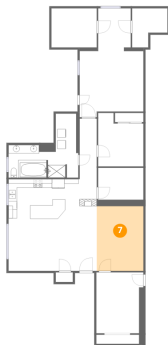
6 Floor 1 - Bedroom



Dimensions: 11'1" x 14'4"
Area: 159 sq. ft
Counted as living area: Yes

Heated: Yes
Finished: Yes
Enclosed: Yes
Contiguous: Yes
Permitted: Yes
Wet space: No
Addition: No
Conversion: No

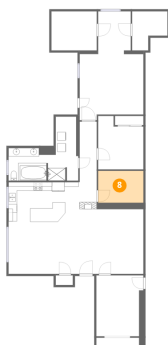
7 Floor 1 - Living Room



Dimensions: 11'0" x 15'3"
Area: 167 sq. ft
Counted as living area: Yes

Heated: Yes
Finished: Yes
Enclosed: Yes
Contiguous: Yes
Permitted: Yes
Wet space: No
Addition: No
Conversion: No

8 Floor 1 - Room

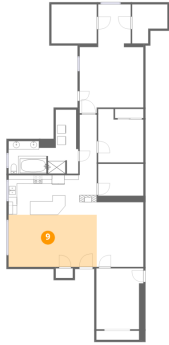


Dimensions: 10'8" x 7'6"
Area: 80 sq. ft
Counted as living area: Yes

Heated: Yes
Finished: Yes
Enclosed: Yes
Contiguous: Yes
Permitted: Yes
Wet space: No
Addition: No
Conversion: No

10257 State Route 31, Galen, Clyde, Wayne County, New York,
United States, 14433, Upstairs Apartment

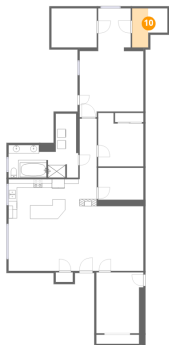
9 Floor 1 - Dining Area



Dimensions: 20'9" x 12'3"
Area: 254 sq. ft
Counted as living area: Yes

Heated: Yes
Finished: Yes
Enclosed: Yes
Contiguous: Yes
Permitted: Yes
Wet space: No
Addition: No
Conversion: No

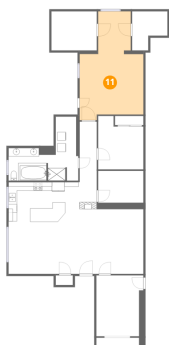
10 Floor 1 - W.I.C.



Dimensions: 8'3" x 9'3"
Area: 76 sq. ft
Counted as living area: Yes

Heated: Yes
Finished: Yes
Enclosed: Yes
Contiguous: Yes
Permitted: Yes
Wet space: No
Addition: No
Conversion: No

11 Floor 1 - Primary Bedroom



Dimensions: 15'0" x 24'4"
Area: 365 sq. ft
Counted as living area: Yes

Heated: Yes
Finished: Yes
Enclosed: Yes
Contiguous: Yes
Permitted: Yes
Wet space: No
Addition: No
Conversion: No