

Home data report

30814 Inkberry Way, Selbyville, DE, US



**Total Area: 2536 sq. ft**

1st Floor: 1445 sq. ft, 2nd Floor: 1091 sq. ft

Excluded: Garage 189 sq. ft, Walls: 148 sq. ft

## Property summary

 **2** Floors

 **5** Bedrooms

 **3** Bathrooms

Home data report

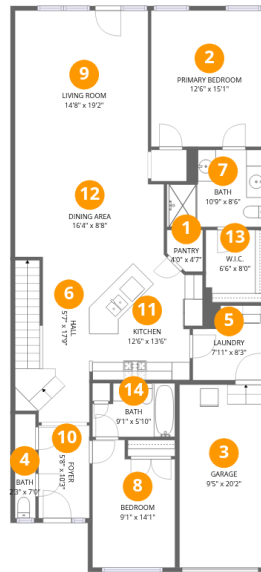
**30814 Inkberry Way, Selbyville, DE, US**

 **1**  
Half baths

 **1**  
Garages

# Home data report

## 30814 Inkberry Way, Selbyville, DE, US



### Room dimensions

Floor 1

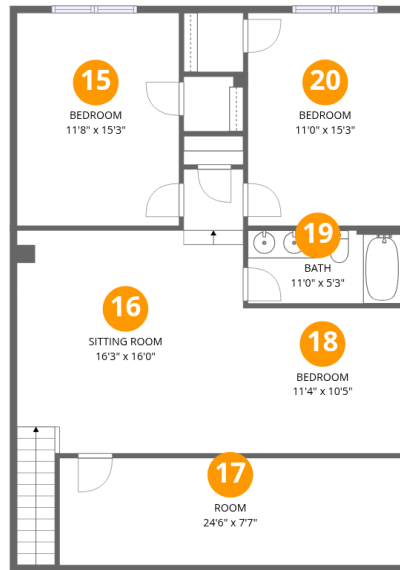
Total: 1445sqft Excluded: 189sqft

#		Dimensions	sqft	Counted as living area
1	Pantry	4'0" x 4'7"	18 sq. ft	Yes
2	Primary Bedroom	12'6" x 15'1"	188 sq. ft	Yes
3	Garage	9'5" x 20'2"	189 sq. ft	No
4	Bath	2'3" x 7'0"	16 sq. ft	Yes
5	Laundry	7'11" x 8'3"	65 sq. ft	Yes
6	Hall	5'7" x 17'9"	100 sq. ft	Yes
7	Bath	10'9" x 8'6"	92 sq. ft	Yes
8	Bedroom	9'1" x 14'1"	128 sq. ft	Yes
9	Living Room	14'8" x 19'2"	281 sq. ft	Yes
10	Foyer	5'8" x 10'3"	58 sq. ft	Yes
11	Kitchen	12'6" x 13'6"	168 sq. ft	Yes

Home data report

**30814 Inkberry Way, Selbyville, DE, US**

#		Dimensions	sqft	Counted as living area
12	Dining Area	16'4" x 8'8"	141 sq. ft	Yes
13	W.I.C.	6'6" x 8'0"	52 sq. ft	Yes
14	Bath	9'1" x 5'10"	54 sq. ft	Yes



## Room dimensions

Floor 2

Total: 1091 sqft

Excluded: 0 sqft

#		Dimensions	sqft	Counted as living area
15	Bedroom	11'8" x 15'3"	177 sq. ft	Yes
16	Sitting Room	16'3" x 16'0"	259 sq. ft	Yes
17	Room	24'6" x 7'7"	186 sq. ft	Yes
18	Bedroom	11'4" x 10'5"	117 sq. ft	Yes
19	Bath	11'0" x 5'3"	58 sq. ft	Yes
20	Bedroom	11'0" x 15'3"	167 sq. ft	Yes

## 1 Floor 1 - Pantry



Dimensions: 4'0" x 4'7"  
Area: 18 sq. ft  
Counted as living area: Yes

Heated: Yes  
Finished: Yes  
Enclosed: Yes  
Contiguous: Yes  
Permitted: Yes  
Wet space: No  
Addition: No  
Conversion: No

## 2 Floor 1 - Primary Bedroom



Dimensions: 12'6" x 15'1"  
Area: 188 sq. ft  
Counted as living area: Yes

Heated: Yes  
Finished: Yes  
Enclosed: Yes  
Contiguous: Yes  
Permitted: Yes  
Wet space: No  
Addition: No  
Conversion: No

### 3 Floor 1 - Garage



Dimensions: 9'5" x 20'2"  
Area: 189 sq. ft  
Counted as living area: No

Heated: No  
Finished: No  
Enclosed: Yes  
Contiguous: Yes  
Permitted: Yes  
Wet space: No  
Addition: No  
Conversion: No

### 4 Floor 1 - Bath



Dimensions: 2'3" x 7'0"  
Area: 16 sq. ft  
Counted as living area: Yes

Heated: Yes  
Finished: Yes  
Enclosed: Yes  
Contiguous: Yes  
Permitted: Yes  
Wet space: Yes  
Addition: No  
Conversion: No

### 5 Floor 1 - Laundry



Dimensions: 7'11" x 8'3"  
Area: 65 sq. ft  
Counted as living area: Yes

Heated: Yes  
Finished: Yes  
Enclosed: Yes  
Contiguous: Yes  
Permitted: Yes  
Wet space: No  
Addition: No  
Conversion: No

## 6 Floor 1 - Hall



Dimensions: 5'7" x 17'9"  
Area: 100 sq. ft  
Counted as living area: Yes

Heated: Yes  
Finished: Yes  
Enclosed: Yes  
Contiguous: Yes  
Permitted: Yes  
Wet space: No  
Addition: No  
Conversion: No

## 7 Floor 1 - Bath



Dimensions: 10'9" x 8'6"  
Area: 92 sq. ft  
Counted as living area: Yes

Heated: Yes  
Finished: Yes  
Enclosed: Yes  
Contiguous: Yes  
Permitted: Yes  
Wet space: Yes  
Addition: No  
Conversion: No

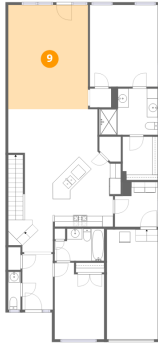
## 8 Floor 1 - Bedroom



Dimensions: 9'1" x 14'1"  
Area: 128 sq. ft  
Counted as living area: Yes

Heated: Yes  
Finished: Yes  
Enclosed: Yes  
Contiguous: Yes  
Permitted: Yes  
Wet space: No  
Addition: No  
Conversion: No

## 9 Floor 1 - Living Room



Dimensions: 14'8" x 19'2"  
Area: 281 sq. ft  
Counted as living area: Yes

Heated: Yes  
Finished: Yes  
Enclosed: Yes  
Contiguous: Yes  
Permitted: Yes  
Wet space: No  
Addition: No  
Conversion: No

## 10 Floor 1 - Foyer



Dimensions: 5'8" x 10'3"  
Area: 58 sq. ft  
Counted as living area: Yes

Heated: Yes  
Finished: Yes  
Enclosed: Yes  
Contiguous: Yes  
Permitted: Yes  
Wet space: No  
Addition: No  
Conversion: No

## 11 Floor 1 - Kitchen



Dimensions: 12'6" x 13'6"  
Area: 168 sq. ft  
Counted as living area: Yes

Heated: Yes  
Finished: Yes  
Enclosed: Yes  
Contiguous: Yes  
Permitted: Yes  
Wet space: No  
Addition: No  
Conversion: No

## 12 Floor 1 - Dining Area



Dimensions: 16'4" x 8'8"  
Area: 141 sq. ft  
Counted as living area: Yes

Heated: Yes  
Finished: Yes  
Enclosed: Yes  
Contiguous: Yes  
Permitted: Yes  
Wet space: No  
Addition: No  
Conversion: No

## 13 Floor 1 - W.I.C.



Dimensions: 6'6" x 8'0"  
Area: 52 sq. ft  
Counted as living area: Yes

Heated: Yes  
Finished: Yes  
Enclosed: Yes  
Contiguous: Yes  
Permitted: Yes  
Wet space: No  
Addition: No  
Conversion: No

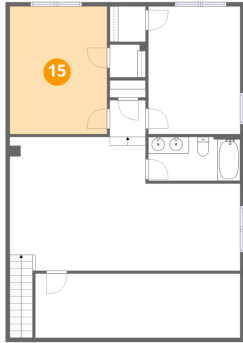
## 14 Floor 1 - Bath



Dimensions: 9'1" x 5'10"  
Area: 54 sq. ft  
Counted as living area: Yes

Heated: Yes  
Finished: Yes  
Enclosed: Yes  
Contiguous: Yes  
Permitted: Yes  
Wet space: Yes  
Addition: No  
Conversion: No

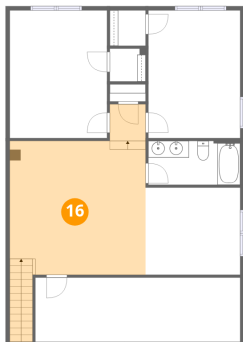
### 15 Floor 2 - Bedroom



Dimensions: 11'8" x 15'3"  
Area: 177 sq. ft  
Counted as living area: Yes

Heated: Yes  
Finished: Yes  
Enclosed: Yes  
Contiguous: Yes  
Permitted: Yes  
Wet space: No  
Addition: No  
Conversion: No

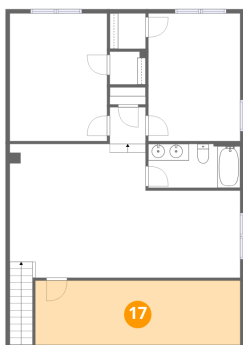
### 16 Floor 2 - Sitting Room



Dimensions: 16'3" x 16'0"  
Area: 259 sq. ft  
Counted as living area: Yes

Heated: Yes  
Finished: Yes  
Enclosed: Yes  
Contiguous: Yes  
Permitted: Yes  
Wet space: No  
Addition: No  
Conversion: No

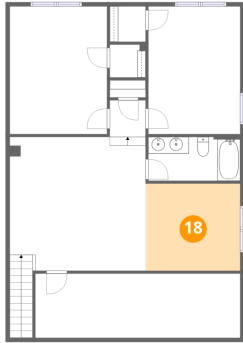
### 17 Floor 2 - Room



Dimensions: 24'6" x 7'7"  
Area: 186 sq. ft  
Counted as living area: Yes

Heated: Yes  
Finished: Yes  
Enclosed: Yes  
Contiguous: Yes  
Permitted: Yes  
Wet space: No  
Addition: No  
Conversion: No

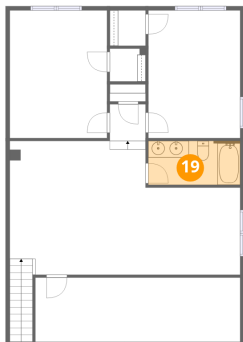
**18** Floor 2 - Bedroom



Dimensions: 11'4" x 10'5"  
Area: 117 sq. ft  
Counted as living area: Yes

Heated: Yes  
Finished: Yes  
Enclosed: Yes  
Contiguous: Yes  
Permitted: Yes  
Wet space: No  
Addition: No  
Conversion: No

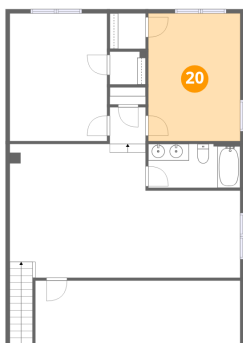
**19** Floor 2 - Bath



Dimensions: 11'0" x 5'3"  
Area: 58 sq. ft  
Counted as living area: Yes

Heated: Yes  
Finished: Yes  
Enclosed: Yes  
Contiguous: Yes  
Permitted: Yes  
Wet space: Yes  
Addition: No  
Conversion: No

**20** Floor 2 - Bedroom



Dimensions: 11'0" x 15'3"  
Area: 167 sq. ft  
Counted as living area: Yes

Heated: Yes  
Finished: Yes  
Enclosed: Yes  
Contiguous: Yes  
Permitted: Yes  
Wet space: No  
Addition: No  
Conversion: No