

Home data report

218 South 1st Street, Geneva, Kane County, Illinois, United States, 60134



Total Area: 1490 sq. ft

Basement: 0 sq. ft, 1st Floor: 958 sq. ft, 2nd Floor: 532 sq. ft

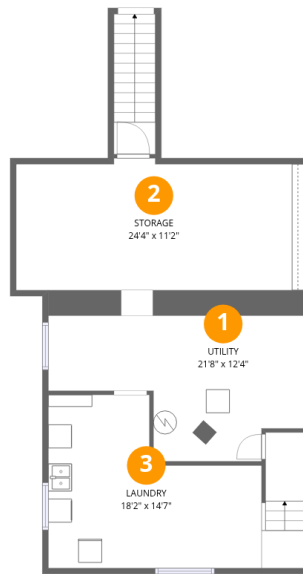
Excluded: Laundry 259 sq. ft, Utility 251 sq. ft, Storage 264 sq. ft, Undefined 42 sq. ft, Back porch 72 sq. ft, Screened porch 177 sq. ft, Fireplace 11 sq. ft, Walls: 216 sq. ft

Property summary



Home data report

218 South 1st Street, Geneva, Kane County, Illinois, United States, 60134



Room dimensions

Floor 1 Below grade

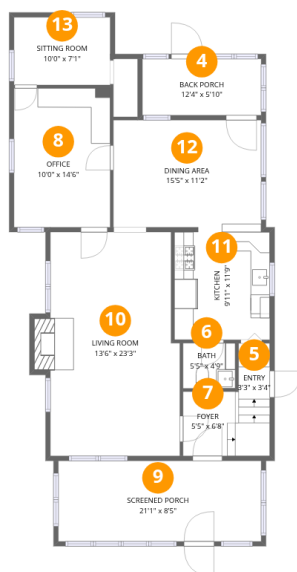
Total:0sqft

Excluded: 816sqft

#		Dimensions	sqft	Counted as living area
1	Utility	21'8" x 12'4"	267 sq. ft	No
2	Storage	24'4" x 11'2"	272 sq. ft	No
3	Laundry	18'2" x 14'7"	264 sq. ft	No

Home data report

218 South 1st Street, Geneva, Kane County, Illinois, United States, 60134



Room dimensions

Floor 2

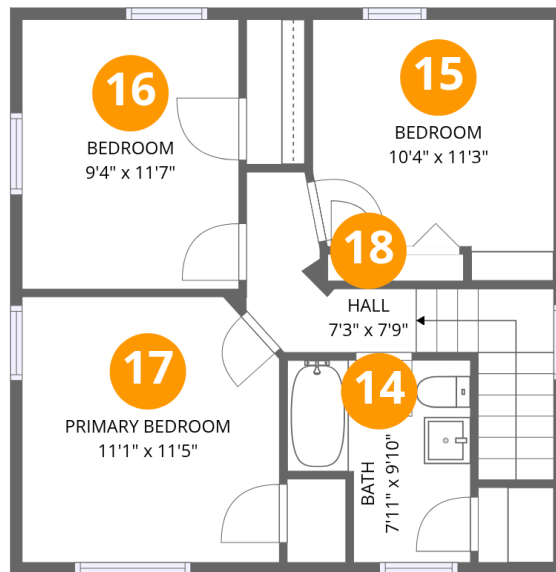
Total:958sqft

Excluded: 260sqft

#		Dimensions	sqft	Counted as living area
4	Back Porch	12'4" x 5'10"	72 sq. ft	No
5	Entry	3'3" x 3'4"	11 sq. ft	Yes
6	Bath	5'5" x 4'9"	26 sq. ft	Yes
7	Foyer	5'5" x 6'8"	36 sq. ft	Yes
8	Office	10'0" x 14'6"	145 sq. ft	Yes
9	Screened Porch	21'1" x 8'5"	177 sq. ft	No
10	Living Room	13'6" x 23'3"	313 sq. ft	Yes
11	Kitchen	9'11" x 11'9"	116 sq. ft	Yes
12	Dining Area	15'5" x 11'2"	171 sq. ft	Yes
13	Sitting Room	10'0" x 7'1"	70 sq. ft	Yes

Home data report

218 South 1st Street, Geneva, Kane County, Illinois, United States, 60134



Room dimensions

Floor 3

Total:532sqft

Excluded: 0sqft

#		Dimensions	sqft	Counted as living area
14	Bath	7'11" x 9'10"	77 sq. ft	Yes
15	Bedroom	10'4" x 11'3"	116 sq. ft	Yes
16	Bedroom	9'4" x 11'7"	108 sq. ft	Yes
17	Primary Bedroom	11'1" x 11'5"	126 sq. ft	Yes
18	Hall	7'3" x 7'9"	56 sq. ft	Yes

218 South 1st Street, Geneva, Kane County, Illinois, United States, 60134

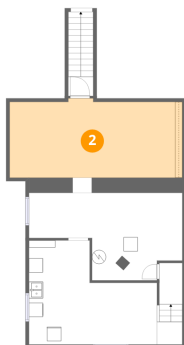
1 Floor 1 - Utility



Dimensions: 21'8" x 12'4"
Area: 267 sq. ft
Counted as living area: No

Heated: Yes
Finished: No
Enclosed: Yes
Contiguous: Yes
Permitted: Yes
Wet space: No
Addition: No
Conversion: No

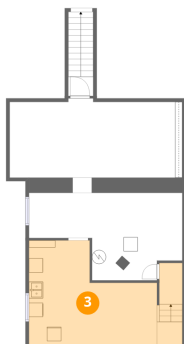
2 Floor 1 - Storage



Dimensions: 24'4" x 11'2"
Area: 272 sq. ft
Counted as living area: No

Heated: No
Finished: No
Enclosed: No
Contiguous: Yes
Permitted: Yes
Wet space: No
Addition: No
Conversion: No

3 Floor 1 - Laundry



Dimensions: 18'2" x 14'7"
Area: 264 sq. ft
Counted as living area: No

Heated: Yes
Finished: No
Enclosed: Yes
Contiguous: Yes
Permitted: Yes
Wet space: No
Addition: No
Conversion: No

4 Floor 2 - Back Porch



Dimensions: 12'4" x 5'10"
Area: 72 sq. ft
Counted as living area: No

Heated: No
Finished: No
Enclosed: No
Contiguous: Yes
Permitted: Yes
Wet space: No
Addition: No
Conversion: No

5 Floor 2 - Entry



Dimensions: 3'3" x 3'4"
Area: 11 sq. ft
Counted as living area: Yes

Heated: Yes
Finished: Yes
Enclosed: Yes
Contiguous: Yes
Permitted: Yes
Wet space: No
Addition: No
Conversion: No

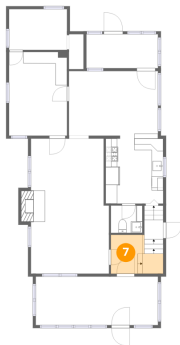
6 Floor 2 - Bath



Dimensions: 5'5" x 4'9"
Area: 26 sq. ft
Counted as living area: Yes

Heated: Yes
Finished: Yes
Enclosed: Yes
Contiguous: Yes
Permitted: Yes
Wet space: Yes
Addition: No
Conversion: No

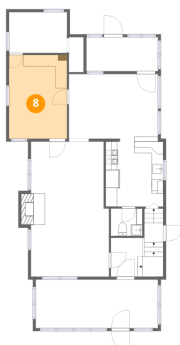
7 Floor 2 - Foyer



Dimensions: 5'5" x 6'8"
Area: 36 sq. ft
Counted as living area: Yes

Heated: Yes
Finished: Yes
Enclosed: Yes
Contiguous: Yes
Permitted: Yes
Wet space: No
Addition: No
Conversion: No

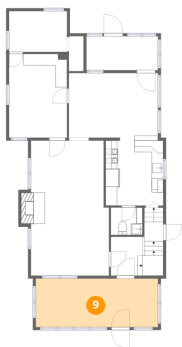
8 Floor 2 - Office



Dimensions: 10'0" x 14'6"
Area: 145 sq. ft
Counted as living area: Yes

Heated: Yes
Finished: Yes
Enclosed: Yes
Contiguous: Yes
Permitted: Yes
Wet space: No
Addition: No
Conversion: No

9 Floor 2 - Screened Porch



Dimensions: 21'1" x 8'5"
Area: 177 sq. ft
Counted as living area: No

Heated: No
Finished: No
Enclosed: No
Contiguous: Yes
Permitted: Yes
Wet space: No
Addition: No
Conversion: No

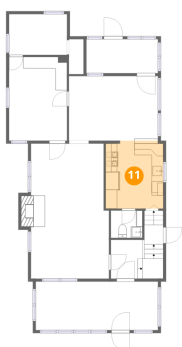
10 Floor 2 - Living Room



Dimensions: 13'6" x 23'3"
Area: 313 sq. ft
Counted as living area: Yes

Heated: Yes
Finished: Yes
Enclosed: Yes
Contiguous: Yes
Permitted: Yes
Wet space: No
Addition: No
Conversion: No

11 Floor 2 - Kitchen



Dimensions: 9'11" x 11'9"
Area: 116 sq. ft
Counted as living area: Yes

Heated: Yes
Finished: Yes
Enclosed: Yes
Contiguous: Yes
Permitted: Yes
Wet space: No
Addition: No
Conversion: No

12 Floor 2 - Dining Area



Dimensions: 15'5" x 11'2"
Area: 171 sq. ft
Counted as living area: Yes

Heated: Yes
Finished: Yes
Enclosed: Yes
Contiguous: Yes
Permitted: Yes
Wet space: No
Addition: No
Conversion: No

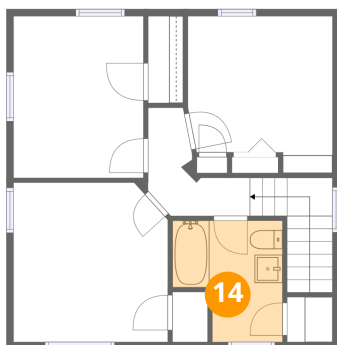
13 Floor 2 - Sitting Room



Dimensions: 10'0" x 7'1"
Area: 70 sq. ft
Counted as living area: Yes

Heated: Yes
Finished: Yes
Enclosed: Yes
Contiguous: Yes
Permitted: Yes
Wet space: No
Addition: No
Conversion: No

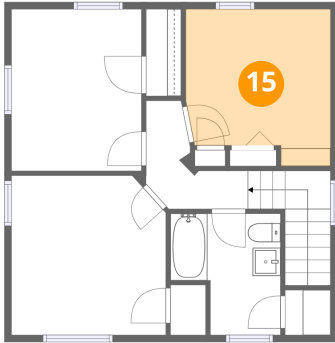
14 Floor 3 - Bath



Dimensions: 7'11" x 9'10"
Area: 77 sq. ft
Counted as living area: Yes

Heated: Yes
Finished: Yes
Enclosed: Yes
Contiguous: Yes
Permitted: Yes
Wet space: Yes
Addition: No
Conversion: No

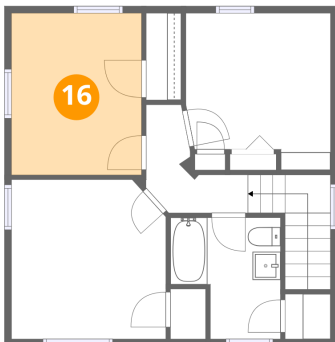
15 Floor 3 - Bedroom



Dimensions: 10'4" x 11'3"
Area: 116 sq. ft
Counted as living area: Yes

Heated: Yes
Finished: Yes
Enclosed: Yes
Contiguous: Yes
Permitted: Yes
Wet space: No
Addition: No
Conversion: No

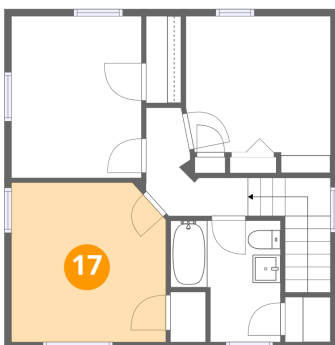
16 Floor 3 - Bedroom



Dimensions: 9'4" x 11'7"
Area: 108 sq. ft
Counted as living area: Yes

Heated: Yes
Finished: Yes
Enclosed: Yes
Contiguous: Yes
Permitted: Yes
Wet space: No
Addition: No
Conversion: No

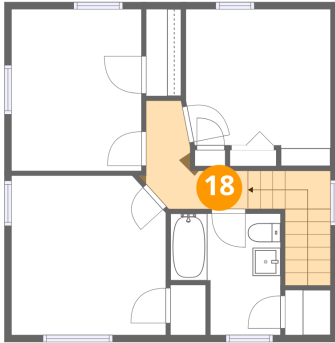
17 Floor 3 - Primary Bedroom



Dimensions: 11'1" x 11'5"
Area: 126 sq. ft
Counted as living area: Yes

Heated: Yes
Finished: Yes
Enclosed: Yes
Contiguous: Yes
Permitted: Yes
Wet space: No
Addition: No
Conversion: No

18 Floor 3 - Hall



Dimensions: 7'3" x 7'9"
Area: 56 sq. ft
Counted as living area: Yes

Heated: Yes
Finished: Yes
Enclosed: Yes
Contiguous: Yes
Permitted: Yes
Wet space: No
Addition: No
Conversion: No