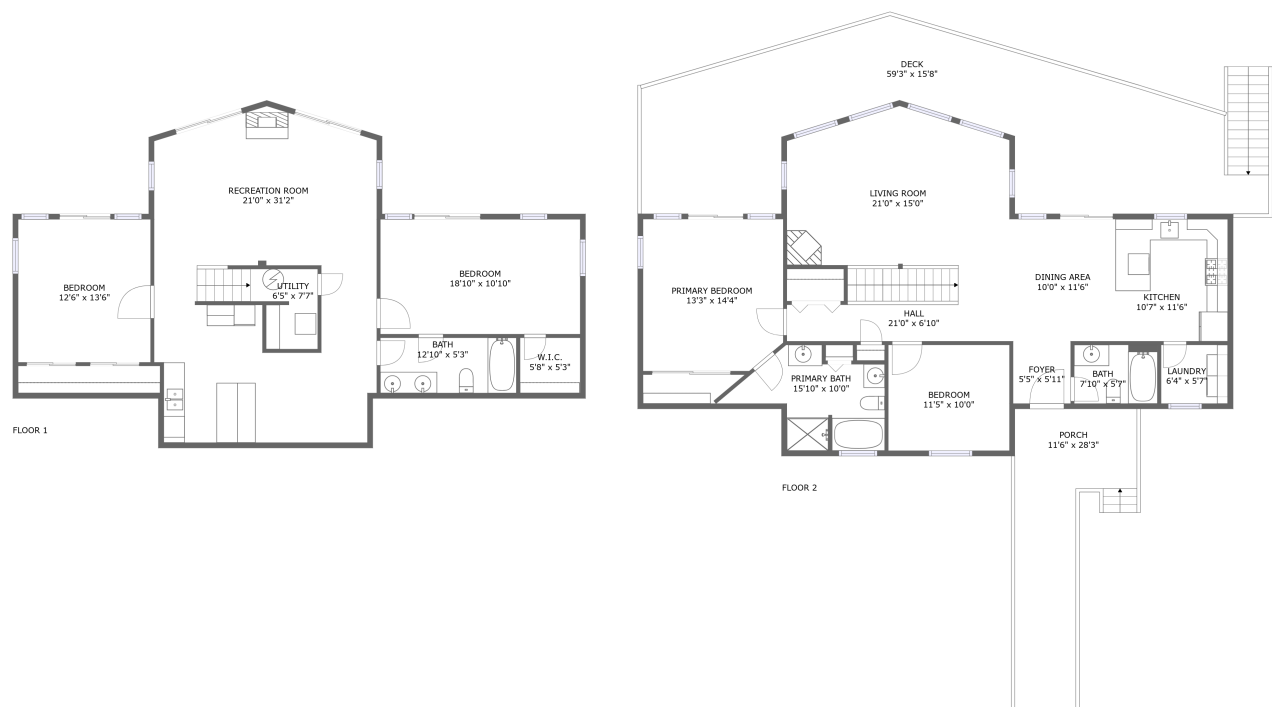


Home report

2303 Moss Meadows Drive, Pittsville, Bedford County, Virginia,  
United States, 24139



**Total Area: 2356 sq. ft**  
Below Ground: 1110 sq. ft, Floor 2: 1246 sq. ft  
Excluded: Utility 41 sq. ft, Porch 213 sq. ft, Deck 658 sq. ft, Walls: 169 sq. ft

Property summary

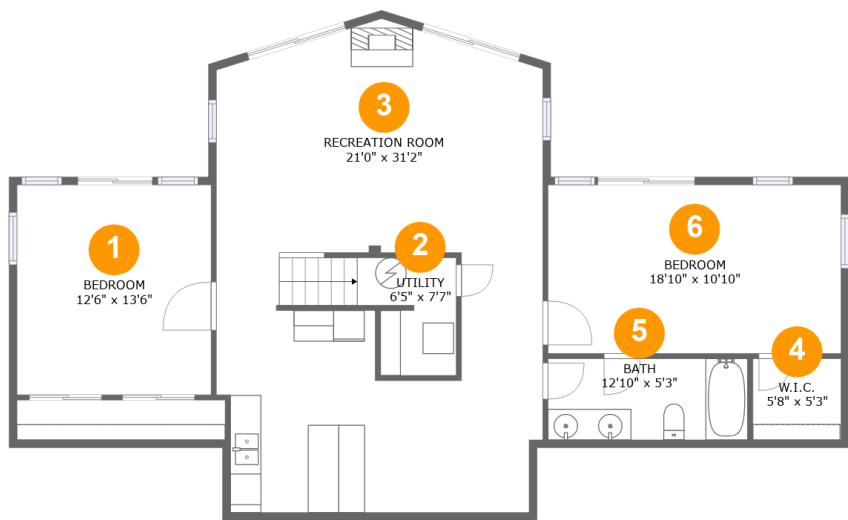
 **2** Floors

 **4** Bedrooms

 **3** Bathrooms

Home report

2303 Moss Meadows Drive, Pittsville, Bedford County, Virginia,  
United States, 24139



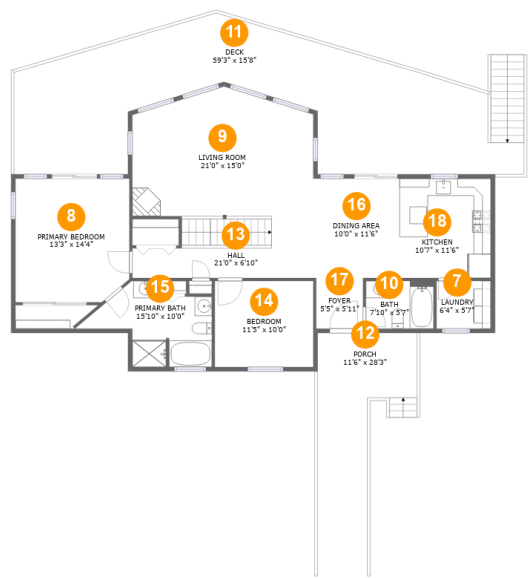
Room dimensions

Floor 1 Below ground Total:1110sqft    Excluded: 41sqft

#		Max Dimensions	sqft	Included
1	Bedroom	12'6" x 13'6"	169 sq. ft	Yes
2	Utility	6'5" x 7'7"	41 sq. ft	No
3	Recreation Room	21'0" x 31'2"	623 sq. ft	No
4	W.I.C.	5'8" x 5'3"	30 sq. ft	Yes
5	Bath	12'10" x 5'3"	67 sq. ft	Yes
6	Bedroom	18'10" x 10'10"	205 sq. ft	Yes

Home report

2303 Moss Meadows Drive, Pittsville, Bedford County, Virginia,  
United States, 24139



Room dimensions

Floor 2

Total:1246sqft   Excluded: 871sqft

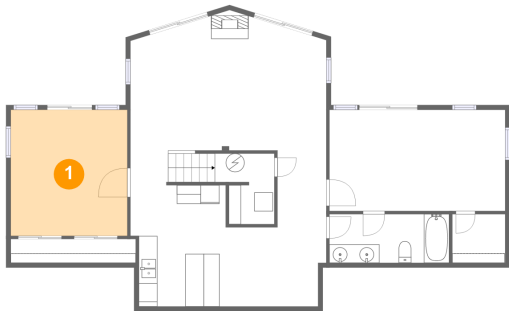
#		Max Dimensions	sqft	Included
7	Laundry	6'4" x 5'7"	35 sq. ft	Yes
8	Primary Bedroom	13'3" x 14'4"	186 sq. ft	Yes
9	Living Room	21'0" x 15'0"	287 sq. ft	Yes
10	Bath	7'10" x 5'7"	44 sq. ft	Yes
11	Deck	59'3" x 15'8"	658 sq. ft	No
12	Porch	11'6" x 28'3"	213 sq. ft	No
13	Hall	21'0" x 6'10"	124 sq. ft	Yes
14	Bedroom	11'5" x 10'0"	114 sq. ft	Yes
15	Primary Bath	15'10" x 10'0"	99 sq. ft	Yes
16	Dining Area	10'0" x 11'6"	116 sq. ft	Yes
17	Foyer	5'5" x 5'11"	32 sq. ft	Yes

Home report

2303 Moss Meadows Drive, Pittsville, Bedford County, Virginia,  
United States, 24139

#		Max Dimensions	sqft	Included
18	Kitchen	10'7" x 11'6"	122 sq. ft	Yes

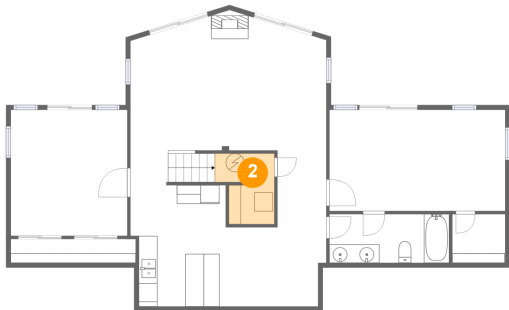
1 Floor 1 - Bedroom



Max Dimensions: 12'6" x 13'6"  
Calculated Area: 169 sq. ft  
Included: Yes

Heated: Yes  
Finished: Yes  
Enclosed: Yes  
Contiguous: Yes  
Permitted: Yes  
Wet space: No  
Addition: No  
Conversion: No

2 Floor 1 - Utility



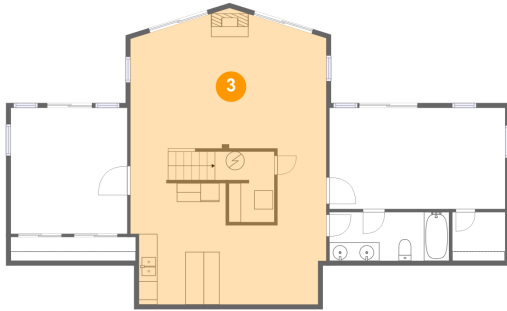
Max Dimensions: 6'5" x 7'7"  
Calculated Area: 41 sq. ft  
Included: No

Heated: Yes  
Finished: No  
Enclosed: Yes  
Contiguous: Yes  
Permitted: Yes  
Wet space: No  
Addition: No  
Conversion: No

## Home report

2303 Moss Meadows Drive, Pittsville, Bedford County, Virginia,  
United States, 24139

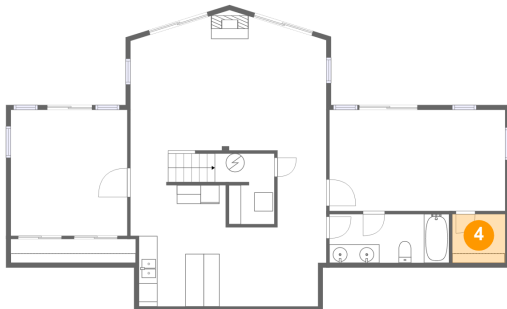
### 3 Floor 1 - Recreation Room



Max Dimensions: 21'0" x 31'2"  
Calculated Area: 623 sq. ft  
Included: No

Heated: Yes  
Finished: Yes  
Enclosed: Yes  
Contiguous: Yes  
Permitted: Yes  
Wet space: No  
Addition: No  
Conversion: No

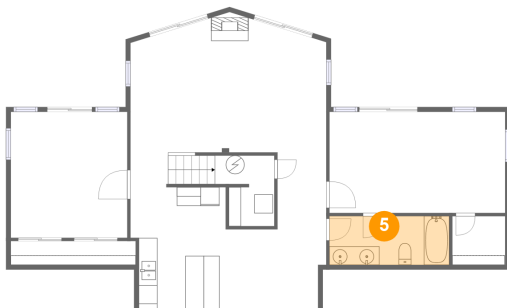
### 4 Floor 1 - W.I.C.



Max Dimensions: 5'8" x 5'3"  
Calculated Area: 30 sq. ft  
Included: Yes

Heated: Yes  
Finished: Yes  
Enclosed: Yes  
Contiguous: Yes  
Permitted: Yes  
Wet space: No  
Addition: No  
Conversion: No

### 5 Floor 1 - Bath



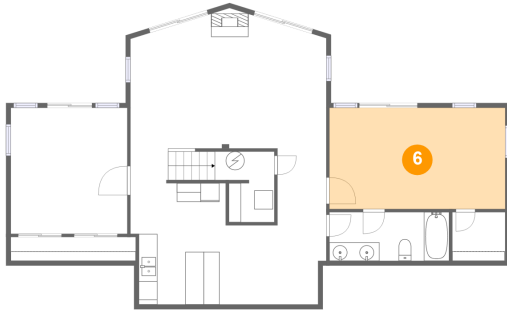
Max Dimensions: 12'10" x 5'3"  
Calculated Area: 67 sq. ft  
Included: Yes

Heated: Yes  
Finished: Yes  
Enclosed: Yes  
Contiguous: Yes  
Permitted: Yes  
Wet space: Yes  
Addition: No  
Conversion: No

## Home report

2303 Moss Meadows Drive, Pittsville, Bedford County, Virginia,  
United States, 24139

### 6 Floor 1 - Bedroom



Max Dimensions: 18'10" x 10'10"  
Calculated Area: 205 sq. ft  
Included: Yes

Heated: Yes  
Finished: Yes  
Enclosed: Yes  
Contiguous: Yes  
Permitted: Yes  
Wet space: No  
Addition: No  
Conversion: No

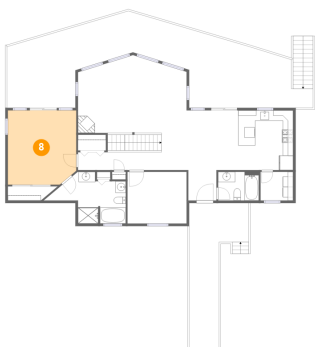
### 7 Floor 2 - Laundry



Max Dimensions: 6'4" x 5'7"  
Calculated Area: 35 sq. ft  
Included: Yes

Heated: Yes  
Finished: Yes  
Enclosed: Yes  
Contiguous: Yes  
Permitted: Yes  
Wet space: No  
Addition: No  
Conversion: No

### 8 Floor 2 - Primary Bedroom

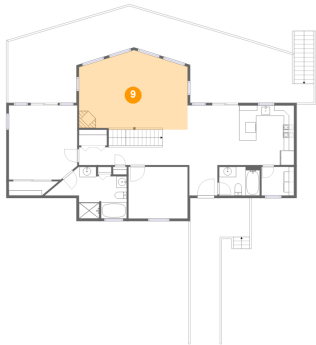


Max Dimensions: 13'3" x 14'4"  
Calculated Area: 186 sq. ft  
Included: Yes

Heated: Yes  
Finished: Yes  
Enclosed: Yes  
Contiguous: Yes  
Permitted: Yes  
Wet space: No  
Addition: No  
Conversion: No

2303 Moss Meadows Drive, Pittsville, Bedford County, Virginia,  
United States, 24139

## 9 Floor 2 - Living Room



Max Dimensions: 21'0" x 15'0"  
Calculated Area: 287 sq. ft  
Included: Yes

Heated: Yes  
Finished: Yes  
Enclosed: Yes  
Contiguous: Yes  
Permitted: Yes  
Wet space: No  
Addition: No  
Conversion: No

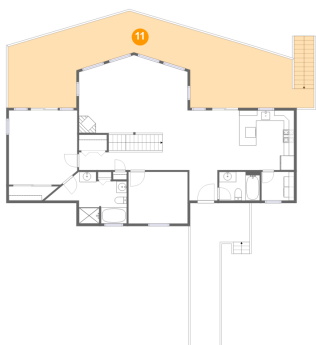
## 10 Floor 2 - Bath



Max Dimensions: 7'10" x 5'7"  
Calculated Area: 44 sq. ft  
Included: Yes

Heated: Yes  
Finished: Yes  
Enclosed: Yes  
Contiguous: Yes  
Permitted: Yes  
Wet space: Yes  
Addition: No  
Conversion: No

## 11 Floor 2 - Deck



Max Dimensions: 59'3" x 15'8"  
Calculated Area: 658 sq. ft  
Included: No

Heated: No  
Finished: Yes  
Enclosed: No  
Contiguous: Yes  
Permitted: Yes  
Wet space: No  
Addition: No  
Conversion: No



2303 Moss Meadows Drive, Pittsville, Bedford County, Virginia,  
United States, 24139

## 12 Floor 2 - Porch



Max Dimensions: 11'6" x  
28'3"  
Calculated Area: 213 sq. ft  
Included: No

Heated: No  
Finished: Yes  
Enclosed: No  
Contiguous:  
Yes  
Permitted: Yes  
Wet space: No  
Addition: No  
Conversion: No

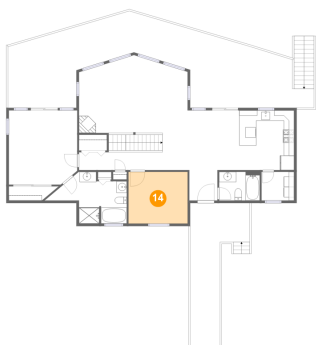
## 13 Floor 2 - Hall



Max Dimensions: 21'0" x  
6'10"  
Calculated Area: 124 sq. ft  
Included: Yes

Heated: Yes  
Finished: Yes  
Enclosed: Yes  
Contiguous:  
Yes  
Permitted: Yes  
Wet space: No  
Addition: No  
Conversion: No

## 14 Floor 2 - Bedroom



Max Dimensions: 11'5" x  
10'0"  
Calculated Area: 114 sq. ft  
Included: Yes

Heated: Yes  
Finished: Yes  
Enclosed: Yes  
Contiguous:  
Yes  
Permitted: Yes  
Wet space: No  
Addition: No  
Conversion: No

2303 Moss Meadows Drive, Pittsville, Bedford County, Virginia,  
United States, 24139

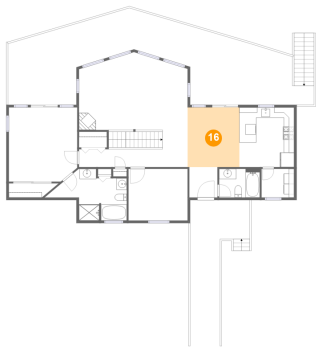
## 15 Floor 2 - Primary Bath



Max Dimensions: 15'10" x 10'0"  
Calculated Area: 99 sq. ft  
Included: Yes

Heated: Yes  
Finished: Yes  
Enclosed: Yes  
Contiguous: Yes  
Permitted: Yes  
Wet space: Yes  
Addition: No  
Conversion: No

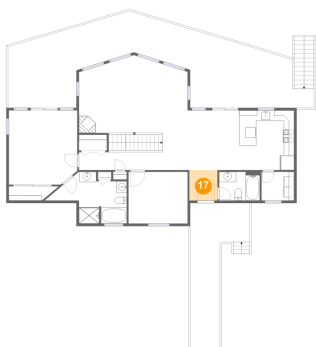
## 16 Floor 2 - Dining Area



Max Dimensions: 10'0" x 11'6"  
Calculated Area: 116 sq. ft  
Included: Yes

Heated: Yes  
Finished: Yes  
Enclosed: Yes  
Contiguous: Yes  
Permitted: Yes  
Wet space: No  
Addition: No  
Conversion: No

## 17 Floor 2 - Foyer



Max Dimensions: 5'5" x 5'11"  
Calculated Area: 32 sq. ft  
Included: Yes

Heated: Yes  
Finished: Yes  
Enclosed: Yes  
Contiguous: Yes  
Permitted: Yes  
Wet space: No  
Addition: No  
Conversion: No

Home report

**2303 Moss Meadows Drive, Pittsville, Bedford County, Virginia,  
United States, 24139**

## **18** Floor 2 - Kitchen

---



**Max Dimensions:** 10'7" x  
11'6"  
**Calculated Area:** 122 sq. ft  
**Included:** Yes

**Heated:** Yes  
**Finished:** Yes  
**Enclosed:** Yes  
**Contiguous:**  
Yes  
**Permitted:** Yes  
**Wet space:** No  
**Addition:** No  
**Conversion:** No