

Home data report

67 Wedge Lane, Flying Hills, Reading, Berks County, Pennsylvania, United States, 19607



Total Area: 1574 sq. ft

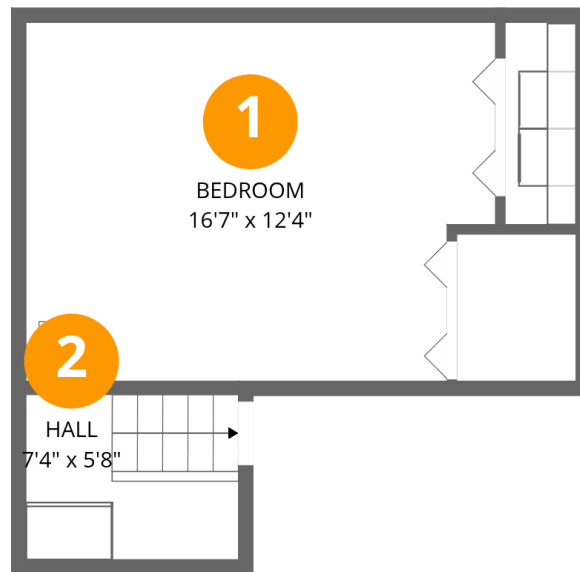
Basement: 281 sq. ft, 1st Floor: 358 sq. ft, 2nd Floor: 282 sq. ft, 3rd Floor: 385 sq. ft, 4th Floor: 268 sq. ft

Excluded: Porch 8 sq. ft, Covered patio 186 sq. ft, Walls: 187 sq. ft

Property summary



**67 Wedge Lane, Flying Hills, Reading, Berks County,
Pennsylvania, United States, 19607**



Room dimensions

Floor 1 Below grade

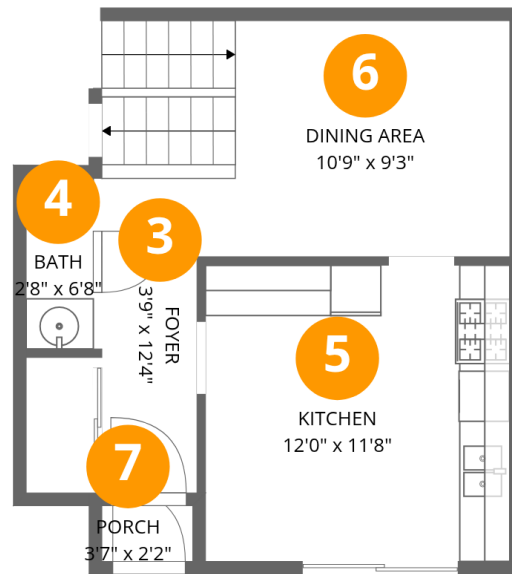
Total:281sqft

Excluded: 0sqft

#		Dimensions	sqft	Counted as living area
1	Bedroom	16'7" x 12'4"	194 sq. ft	Yes
2	Hall	7'4" x 5'8"	42 sq. ft	Yes

Home data report

67 Wedge Lane, Flying Hills, Reading, Berks County,
Pennsylvania, United States, 19607



Room dimensions

Floor 2

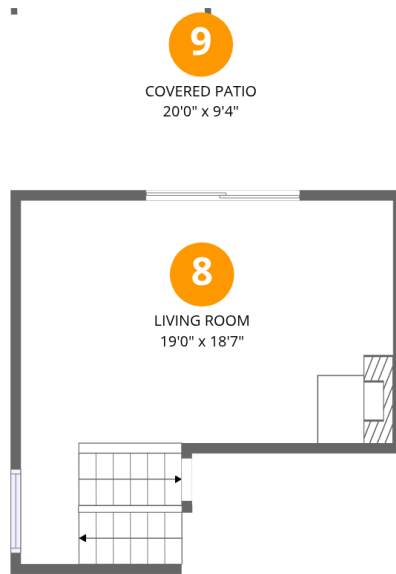
Total:358sqft

Excluded: 8sqft

#		Dimensions	sqft	Counted as living area
3	Foyer	3'9" x 12'4"	46 sq. ft	Yes
4	Bath	2'8" x 6'8"	18 sq. ft	Yes
5	Kitchen	12'0" x 11'8"	139 sq. ft	Yes
6	Dining Area	10'9" x 9'3"	133 sq. ft	Yes
7	Porch	3'7" x 2'2"	8 sq. ft	No

Home data report

67 Wedge Lane, Flying Hills, Reading, Berks County,
Pennsylvania, United States, 19607



Room dimensions

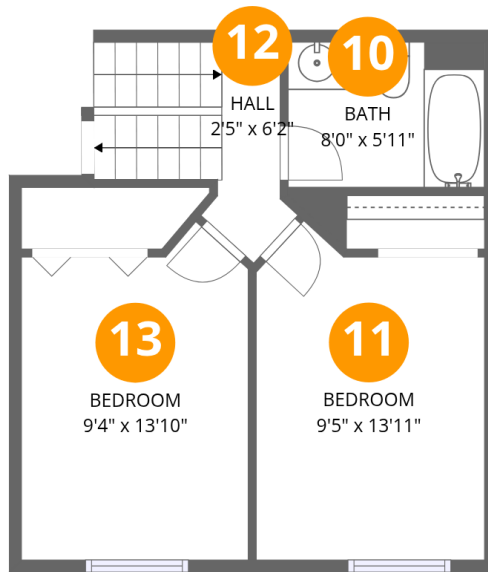
Floor 3

Total:282sqft

Excluded: 186sqft

#		Dimensions	sqft	Counted as living area
8	Living Room	19'0" x 18'7"	282 sq. ft	Yes
9	Covered Patio	20'0" x 9'4"	186 sq. ft	No

67 Wedge Lane, Flying Hills, Reading, Berks County, Pennsylvania, United States, 19607



Room dimensions

Floor 4

Total:385sqft Excluded: 0sqft

#		Dimensions	sqft	Counted as living area
10	Bath	8'0" x 5'11"	48 sq. ft	Yes
11	Bedroom	9'5" x 13'11"	119 sq. ft	Yes
12	Hall	2'5" x 6'2"	50 sq. ft	Yes
13	Bedroom	9'4" x 13'10"	118 sq. ft	Yes

67 Wedge Lane, Flying Hills, Reading, Berks County, Pennsylvania, United States, 19607



Room dimensions

Floor 5

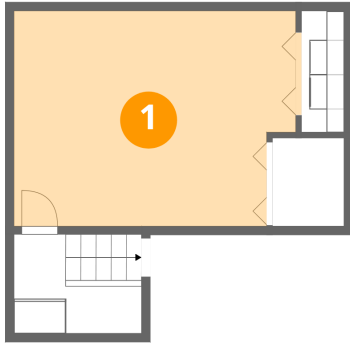
Total:268sqft

Excluded: 0sqft

#		Dimensions	sqft	Counted as living area
14	Hall	3'0" x 5'6"	31 sq. ft	Yes
15	W.I.C.	5'8" x 5'1"	29 sq. ft	Yes
16	Bath	5'8" x 7'0"	40 sq. ft	Yes
17	Primary Bedroom	13'0" x 12'4"	161 sq. ft	Yes

67 Wedge Lane, Flying Hills, Reading, Berks County,
Pennsylvania, United States, 19607

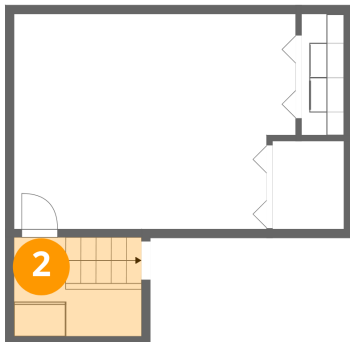
1 Floor 1 - Bedroom



Dimensions: 16'7" x 12'4"
Area: 194 sq. ft
Counted as living area: Yes

Heated: Yes
Finished: Yes
Enclosed: Yes
Contiguous: Yes
Permitted: Yes
Wet space: No
Addition: No
Conversion: No

2 Floor 1 - Hall

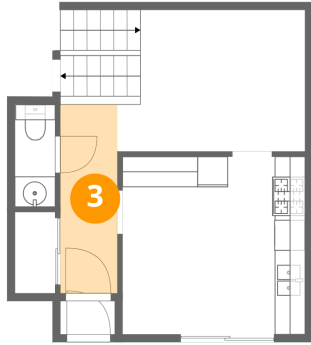


Dimensions: 7'4" x 5'8"
Area: 42 sq. ft
Counted as living area: Yes

Heated: Yes
Finished: Yes
Enclosed: Yes
Contiguous: Yes
Permitted: Yes
Wet space: No
Addition: No
Conversion: No

67 Wedge Lane, Flying Hills, Reading, Berks County,
Pennsylvania, United States, 19607

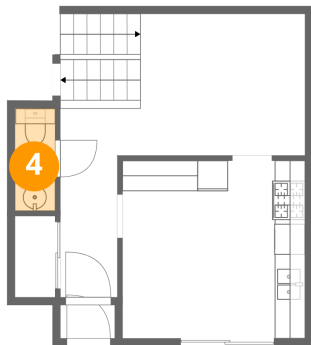
3 Floor 2 - Foyer



Dimensions: 3'9" x 12'4"
Area: 46 sq. ft
Counted as living area: Yes

Heated: Yes
Finished: Yes
Enclosed: Yes
Contiguous: Yes
Permitted: Yes
Wet space: No
Addition: No
Conversion: No

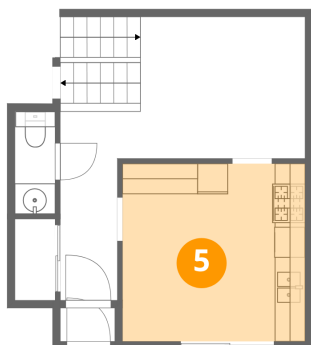
4 Floor 2 - Bath



Dimensions: 2'8" x 6'8"
Area: 18 sq. ft
Counted as living area: Yes

Heated: Yes
Finished: Yes
Enclosed: Yes
Contiguous: Yes
Permitted: Yes
Wet space: Yes
Addition: No
Conversion: No

5 Floor 2 - Kitchen

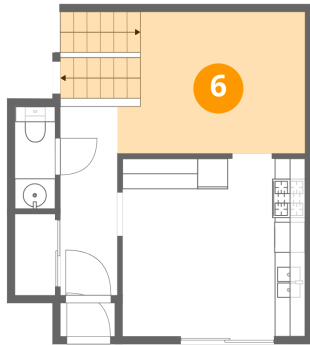


Dimensions: 12'0" x 11'8"
Area: 139 sq. ft
Counted as living area: Yes

Heated: Yes
Finished: Yes
Enclosed: Yes
Contiguous: Yes
Permitted: Yes
Wet space: No
Addition: No
Conversion: No

67 Wedge Lane, Flying Hills, Reading, Berks County,
Pennsylvania, United States, 19607

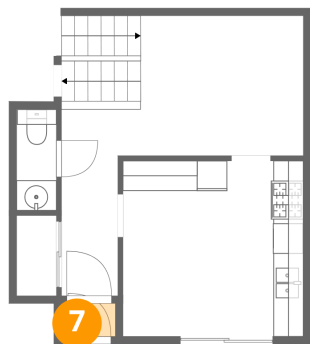
6 Floor 2 - Dining Area



Dimensions: 10'9" x 9'3"
Area: 133 sq. ft
Counted as living area: Yes

Heated: Yes
Finished: Yes
Enclosed: Yes
Contiguous: Yes
Permitted: Yes
Wet space: No
Addition: No
Conversion: No

7 Floor 2 - Porch



Dimensions: 3'7" x 2'2"
Area: 8 sq. ft
Counted as living area: No

Heated: No
Finished: No
Enclosed: No
Contiguous: Yes
Permitted: Yes
Wet space: No
Addition: No
Conversion: No

8 Floor 3 - Living Room

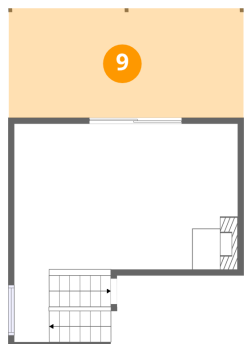


Dimensions: 19'0" x 18'7"
Area: 282 sq. ft
Counted as living area: Yes

Heated: Yes
Finished: Yes
Enclosed: Yes
Contiguous: Yes
Permitted: Yes
Wet space: No
Addition: No
Conversion: No

67 Wedge Lane, Flying Hills, Reading, Berks County,
Pennsylvania, United States, 19607

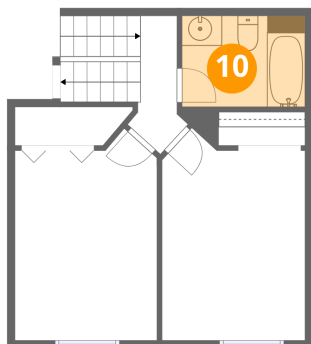
9 Floor 3 - Covered Patio



Dimensions: 20'0" x 9'4"
Area: 186 sq. ft
Counted as living area: No

Heated: No
Finished: No
Enclosed: No
Contiguous: Yes
Permitted: Yes
Wet space: No
Addition: No
Conversion: No

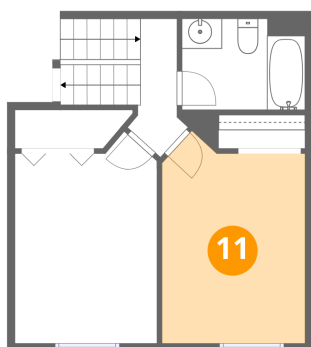
10 Floor 4 - Bath



Dimensions: 8'0" x 5'11"
Area: 48 sq. ft
Counted as living area: Yes

Heated: Yes
Finished: Yes
Enclosed: Yes
Contiguous: Yes
Permitted: Yes
Wet space: Yes
Addition: No
Conversion: No

11 Floor 4 - Bedroom

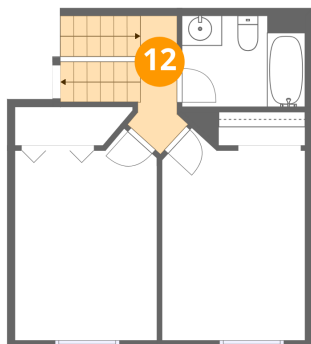


Dimensions: 9'5" x 13'11"
Area: 119 sq. ft
Counted as living area: Yes

Heated: Yes
Finished: Yes
Enclosed: Yes
Contiguous: Yes
Permitted: Yes
Wet space: No
Addition: No
Conversion: No

67 Wedge Lane, Flying Hills, Reading, Berks County,
Pennsylvania, United States, 19607

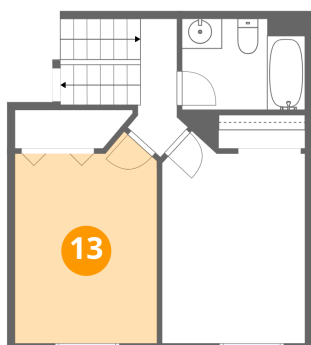
12 Floor 4 - Hall



Dimensions: 2'5" x 6'2"
Area: 50 sq. ft
Counted as living area: Yes

Heated: Yes
Finished: Yes
Enclosed: Yes
Contiguous: Yes
Permitted: Yes
Wet space: No
Addition: No
Conversion: No

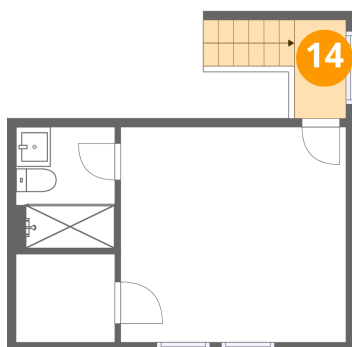
13 Floor 4 - Bedroom



Dimensions: 9'4" x 13'10"
Area: 118 sq. ft
Counted as living area: Yes

Heated: Yes
Finished: Yes
Enclosed: Yes
Contiguous: Yes
Permitted: Yes
Wet space: No
Addition: No
Conversion: No

14 Floor 5 - Hall

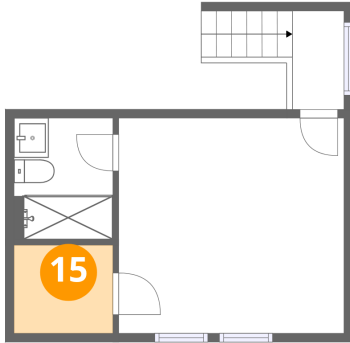


Dimensions: 3'0" x 5'6"
Area: 31 sq. ft
Counted as living area: Yes

Heated: Yes
Finished: Yes
Enclosed: Yes
Contiguous: Yes
Permitted: Yes
Wet space: No
Addition: No
Conversion: No

67 Wedge Lane, Flying Hills, Reading, Berks County,
Pennsylvania, United States, 19607

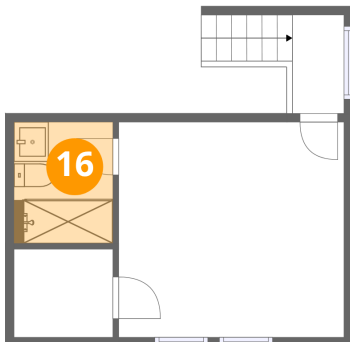
15 Floor 5 - W.I.C.



Dimensions: 5'8" x 5'1"
Area: 29 sq. ft
Counted as living area: Yes

Heated: Yes
Finished: Yes
Enclosed: Yes
Contiguous: Yes
Permitted: Yes
Wet space: No
Addition: No
Conversion: No

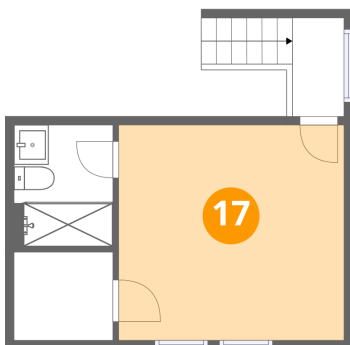
16 Floor 5 - Bath



Dimensions: 5'8" x 7'0"
Area: 40 sq. ft
Counted as living area: Yes

Heated: Yes
Finished: Yes
Enclosed: Yes
Contiguous: Yes
Permitted: Yes
Wet space: Yes
Addition: No
Conversion: No

17 Floor 5 - Primary Bedroom



Dimensions: 13'0" x 12'4"
Area: 161 sq. ft
Counted as living area: Yes

Heated: Yes
Finished: Yes
Enclosed: Yes
Contiguous: Yes
Permitted: Yes
Wet space: No
Addition: No
Conversion: No