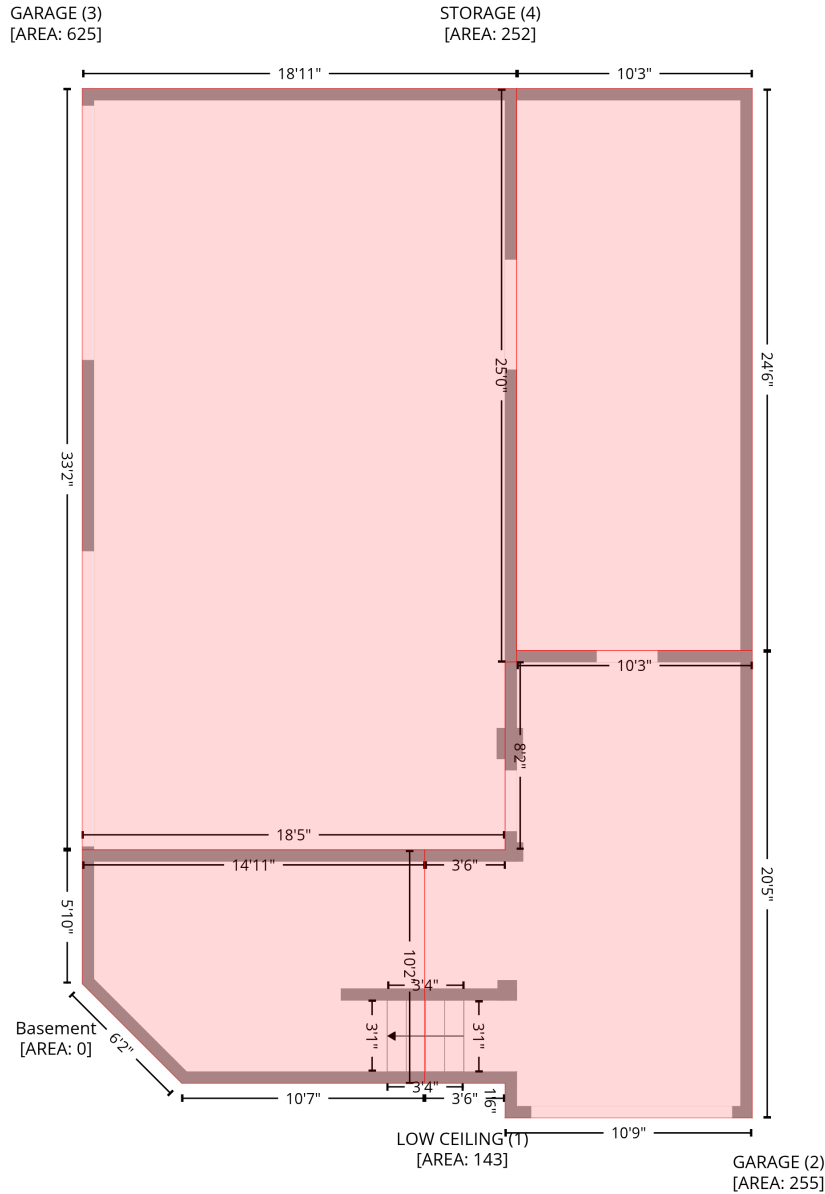


8346 Church Rd, Taylorsville, NC, US

Gross Living Area: 3771 sq. ft

Level 1 - Below Grade



Space	Area (sq. ft)	Calculation
LOW CEILING (Non-living area)	143	$-\left((243.6 + 243.6) * (531 - 653.1) + (243.6 + 116.5) * (653.1 - 653.1) + (116.5 + 64.5) * (653.1 - 601.1) + (64.5 + 64.5) * (601.1 - 531) + (64.5 + 243.6) * (531 - 531)\right) * 0.5 * 0.00694$
GARAGE (Non-living area)	255	$-\left((415 + 415) * (426.7 - 671.3) + (415 + 285.7) * (671.3 - 671.3) + (285.7 + 285.7) * (671.3 - 653.1) + (285.7 + 243.6) * (653.1 - 653.1) + (243.6 + 243.6) * (653.1 - 531) + (243.6 + 285.7) * (531 - 531) + (285.7 + 285.7) * (531 - 432.7) + (285.7 + 291.7) * (432.7 - 432.7) + (291.7 + 291.7) * (432.7 - 426.7) + (291.7 + 415) * (426.7 - 426.7)\right) * 0.5 * 0.00694$

8346 Church Rd, Taylorsville, NC, US

Gross Living Area: 3771 sq. ft

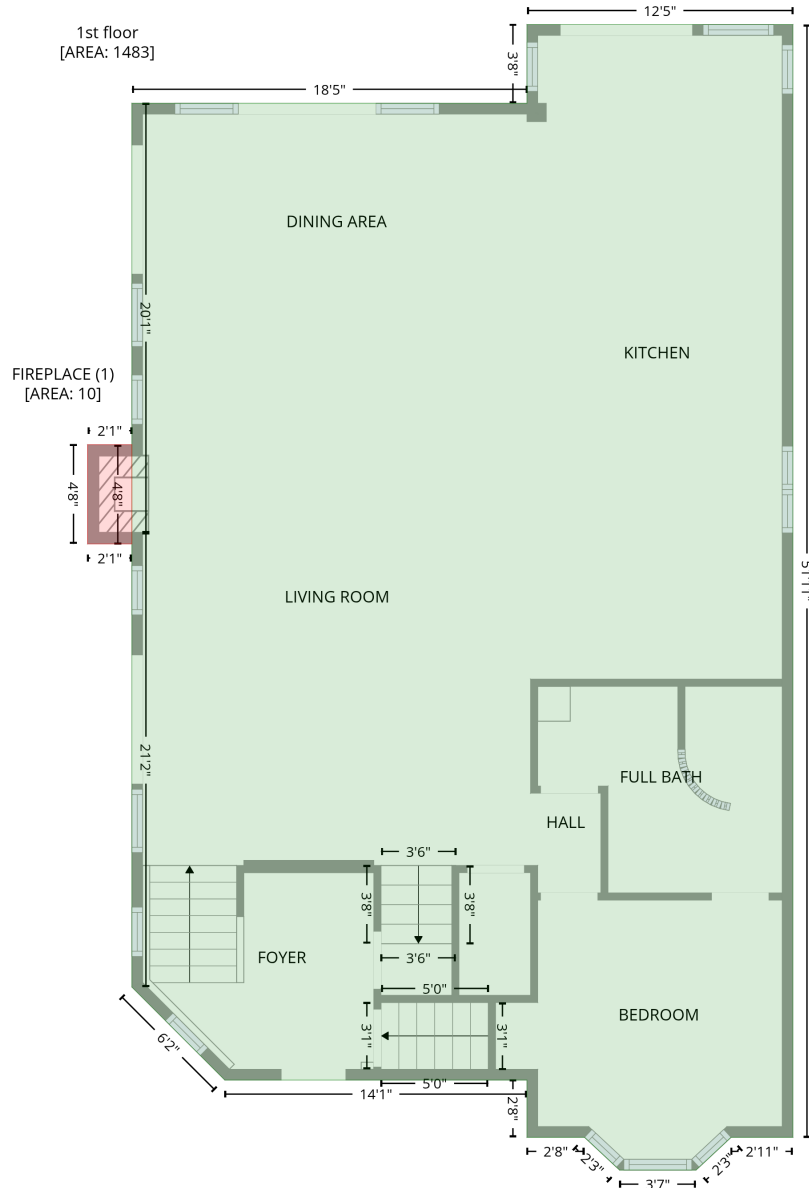
Level 1 - Below Grade

Space	Area (sq. ft)	Calculation <small>Coordinate Polygon Area Algorithm using inches</small>
GARAGE (Non-living area)	625	$-((291.7 + 291.7) * (132.6 - 432.7) + (291.7 + 285.7) * (432.7 - 432.7) + (285.7 + 285.7) * (432.7 - 531) + (285.7 + 64.5) * (531 - 531) + (64.5 + 64.5) * (531 - 132.6) + (64.5 + 291.7) * (132.6 - 132.6)) * 0.5 * 0.00694$
STORAGE (Non-living area)	252	$-((415 + 415) * (132.6 - 426.7) + (415 + 291.7) * (426.7 - 426.7) + (291.7 + 291.7) * (426.7 - 132.6) + (291.7 + 415) * (132.6 - 132.6)) * 0.5 * 0.00694$

8346 Church Rd, Taylorsville, NC, US

Gross Living Area: 3771 sq. ft

Level 2



Space	Area (sq. ft)	Calculation
1st floor (Living area)	1483	Coordinate Polygon Area Algorithm using inches $-((434.6 + 434.6) * (62.1 - 685.2) + (434.6 + 400) * (685.2 - 685.2) + (400 + 380.4) * (685.2 - 703.6) + (380.4 + 337.6) * (703.6 - 703.6) + (337.6 + 318) * (703.6 - 685.2) + (318 + 285.7) * (685.2 - 685.2) + (285.7 + 285.7) * (685.2 - 653.1) + (285.7 + 116.5) * (653.1 - 653.1) + (116.5 + 64.5) * (653.1 - 601.1) + (64.5 + 64.5) * (601.1 - 346.9) + (64.5 + 64.5) * (346.9 - 346.9) + (64.5 + 64.5) * (346.9 - 106.2) + (64.5 + 285.7) * (106.2 - 106.2) + (285.7 + 285.7) * (106.2 - 62.1) + (285.7 + 434.6) * (62.1 - 62.1)) * 0.5 * 0.00694$

8346 Church Rd, Taylorsville, NC, US

Gross Living Area: 3771 sq. ft

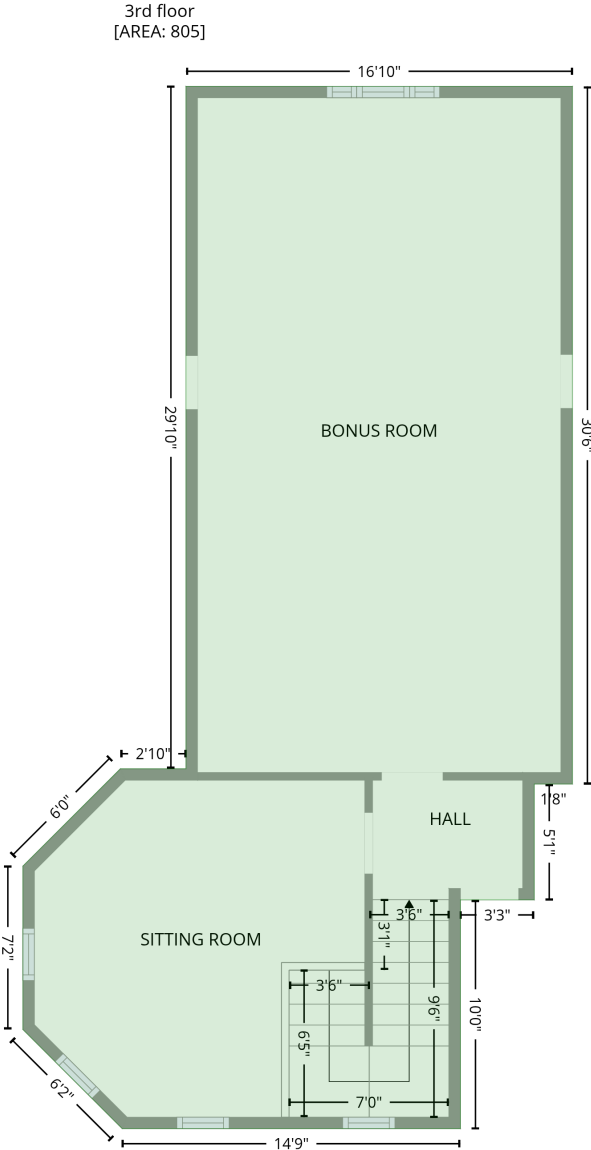
Level 2

Space	Area (sq. ft)	Calculation <small>Coordinate Polygon Area Algorithm using inches</small>
FIREPLACE (Non-living area)	10	$-\left((64.5 + 64.5) * (297.4 - 352.9) + (64.5 + 39.7) * (352.9 - 352.9) + (39.7 + 39.7) * (352.9 - 297.4) + (39.7 + 64.5) * (297.4 - 297.4)\right) * 0.5 * 0.00694$

8346 Church Rd, Taylorsville, NC, US

Gross Living Area: 3771 sq. ft

Level 4



Space	Area (sq. ft)	Calculation <small>Coordinate Polygon Area Algorithm using inches</small>
3rd floor (Living area)	805	$ \begin{aligned} & -((352.4 + 352.4) * (106.2 - 472.3) + (352.4 + 332.4) * (472.3 - 472.3) + (332.4 + 332.4) * (472.3 - \\ & 533.1) + (332.4 + 293.7) * (533.1 - 533.1) + (293.7 + 293.7) * (533.1 - 653.1) + (293.7 + 116.5) * \\ & (653.1 - 653.1) + (116.5 + 64.5) * (653.1 - 601.1) + (64.5 + 64.5) * (601.1 - 515.4) + (64.5 + \\ & 115.6) * (515.4 - 464.3) + (115.6 + 149.9) * (464.3 - 464.3) + (149.9 + 149.9) * (464.3 - 106.2) + \\ & (149.9 + 352.4) * (106.2 - 106.2)) * 0.5 * 0.00694 \end{aligned} $