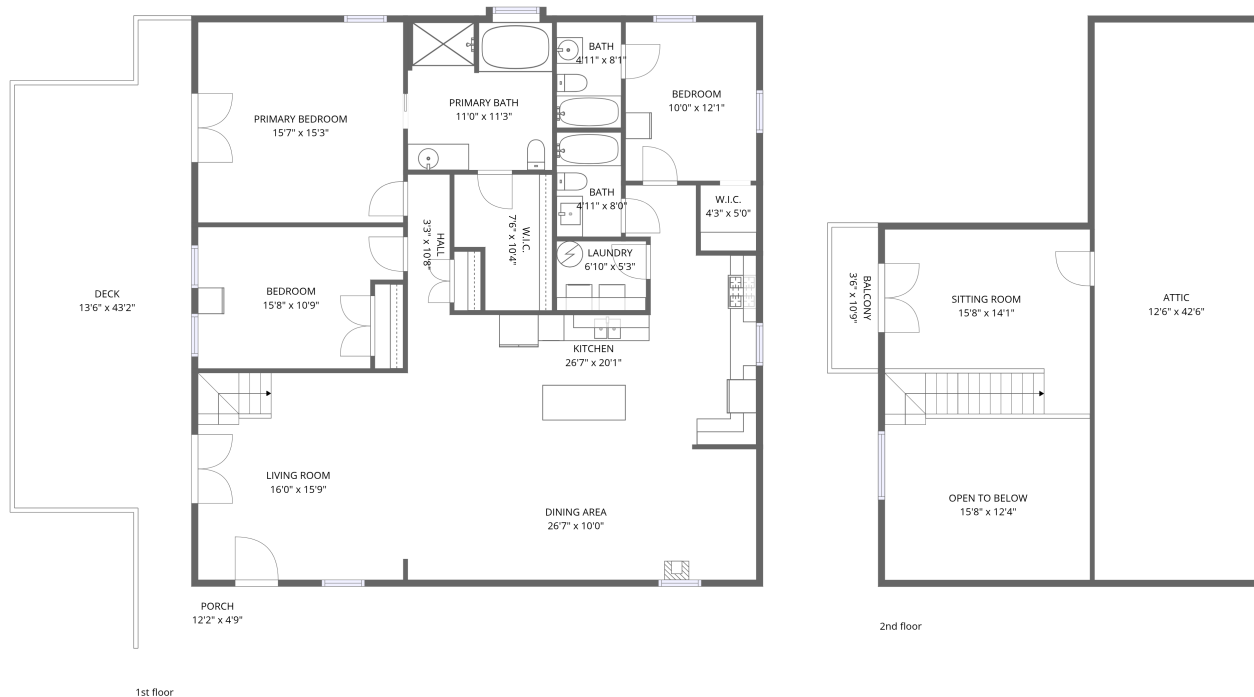


Home data report

517 Elmer Lane, Rocky Mount, Franklin County, Virginia, United States, 24151



Total Area: 2040 sq. ft

1st Floor: 1808 sq. ft, 2nd Floor: 232 sq. ft

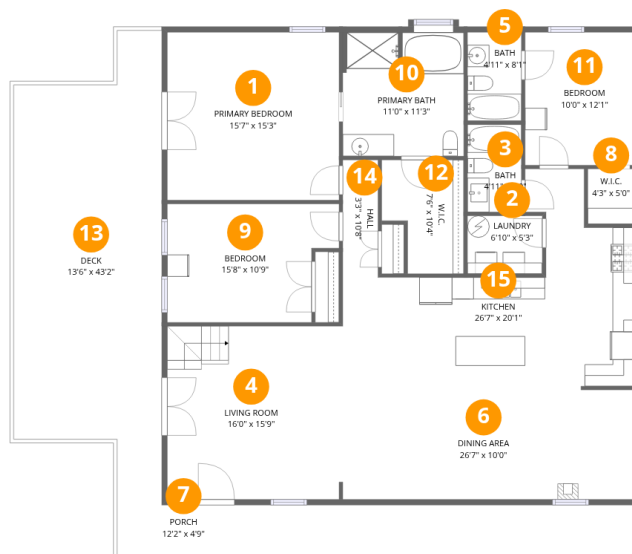
Excluded: Deck 480 sq. ft, Porch 57 sq. ft, Embedded window 3 sq. ft, Attic 535 sq. ft, Balcony 38 sq. ft, Open to below 191 sq. ft, Walls: 159 sq. ft

Property summary



Home data report

517 Elmer Lane, Rocky Mount, Franklin County, Virginia, United States, 24151



Room dimensions

Floor 1

Total:1808sqft Excluded: 540sqft

#		Dimensions	sqft	Counted as living area
1	Primary Bedroom	15'7" x 15'3"	239 sq. ft	Yes
2	Laundry	6'10" x 5'3"	36 sq. ft	Yes
3	Bath	4'11" x 8'0"	39 sq. ft	Yes
4	Living Room	16'0" x 15'9"	252 sq. ft	Yes
5	Bath	4'11" x 8'1"	40 sq. ft	Yes
6	Dining Area	26'7" x 10'0"	265 sq. ft	Yes
7	Porch	12'2" x 4'9"	57 sq. ft	No
8	W.I.C.	4'3" x 5'0"	21 sq. ft	Yes
9	Bedroom	15'8" x 10'9"	152 sq. ft	Yes
10	Primary Bath	11'0" x 11'3"	123 sq. ft	Yes
11	Bedroom	10'0" x 12'1"	121 sq. ft	Yes

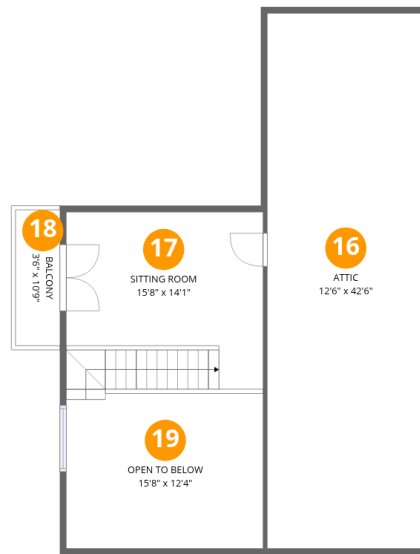
Home data report

517 Elmer Lane, Rocky Mount, Franklin County, Virginia, United States, 24151

#		Dimensions	sqft	Counted as living area
12	W.I.C.	7'6" x 10'4"	66 sq. ft	Yes
13	Deck	13'6" x 43'2"	480 sq. ft	No
14	Hall	3'3" x 10'8"	34 sq. ft	Yes
15	Kitchen	26'7" x 20'1"	333 sq. ft	Yes

Home data report

517 Elmer Lane, Rocky Mount, Franklin County, Virginia, United States, 24151



Room dimensions

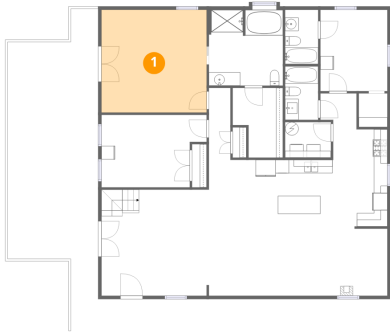
Floor 2

Total:232sqft

Excluded: 764sqft

#		Dimensions	sqft	Counted as living area
16	Attic	12'6" x 42'6"	531 sq. ft	No
17	Sitting Room	15'8" x 14'1"	227 sq. ft	Yes
18	Balcony	3'6" x 10'9"	38 sq. ft	No
19	Open To Below	15'8" x 12'4"	191 sq. ft	No

1 Floor 1 - Primary Bedroom



Dimensions: 15'7" x 15'3"
Area: 239 sq. ft
Counted as living area: Yes

Heated: Yes
Finished: Yes
Enclosed: Yes
Contiguous: Yes
Permitted: Yes
Wet space: No
Addition: No
Conversion: No

2 Floor 1 - Laundry



Dimensions: 6'10" x 5'3"
Area: 36 sq. ft
Counted as living area: Yes

Heated: Yes
Finished: Yes
Enclosed: Yes
Contiguous: Yes
Permitted: Yes
Wet space: No
Addition: No
Conversion: No

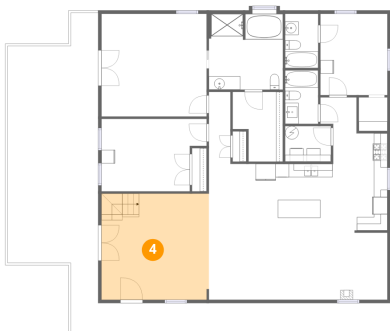
3 Floor 1 - Bath



Dimensions: 4'11" x 8'0"
Area: 39 sq. ft
Counted as living area: Yes

Heated: Yes
Finished: Yes
Enclosed: Yes
Contiguous: Yes
Permitted: Yes
Wet space: Yes
Addition: No
Conversion: No

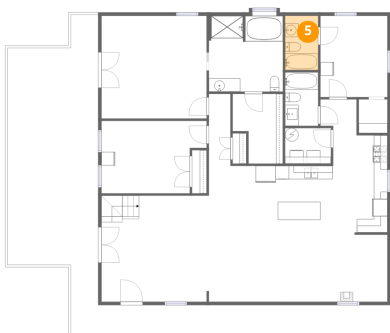
4 Floor 1 - Living Room



Dimensions: 16'0" x 15'9"
Area: 252 sq. ft
Counted as living area: Yes

Heated: Yes
Finished: Yes
Enclosed: Yes
Contiguous: Yes
Permitted: Yes
Wet space: No
Addition: No
Conversion: No

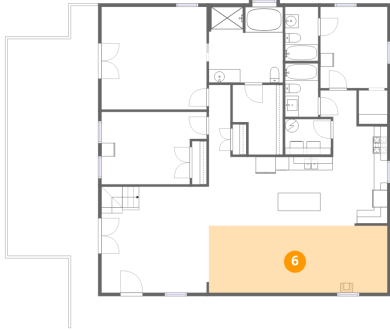
5 Floor 1 - Bath



Dimensions: 4'11" x 8'1"
Area: 40 sq. ft
Counted as living area: Yes

Heated: Yes
Finished: Yes
Enclosed: Yes
Contiguous: Yes
Permitted: Yes
Wet space: Yes
Addition: No
Conversion: No

6 Floor 1 - Dining Area



Dimensions: 26'7" x 10'0"
Area: 265 sq. ft
Counted as living area: Yes

Heated: Yes
Finished: Yes
Enclosed: Yes
Contiguous: Yes
Permitted: Yes
Wet space: No
Addition: No
Conversion: No

7 Floor 1 - Porch



Dimensions: 12'2" x 4'9"
Area: 57 sq. ft
Counted as living area: No

Heated: No
Finished: No
Enclosed: No
Contiguous: Yes
Permitted: Yes
Wet space: No
Addition: No
Conversion: No

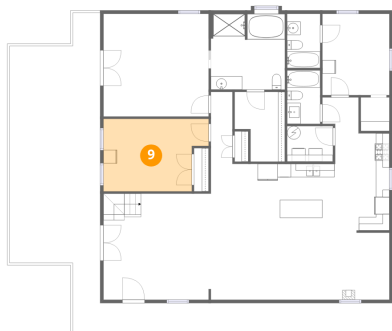
8 Floor 1 - W.I.C.



Dimensions: 4'3" x 5'0"
Area: 21 sq. ft
Counted as living area: Yes

Heated: Yes
Finished: Yes
Enclosed: Yes
Contiguous: Yes
Permitted: Yes
Wet space: No
Addition: No
Conversion: No

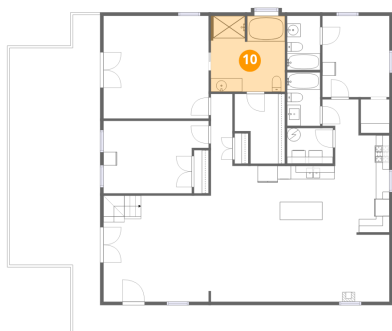
9 Floor 1 - Bedroom



Dimensions: 15'8" x 10'9"
Area: 152 sq. ft
Counted as living area: Yes

Heated: Yes
Finished: Yes
Enclosed: Yes
Contiguous: Yes
Permitted: Yes
Wet space: No
Addition: No
Conversion: No

10 Floor 1 - Primary Bath



Dimensions: 11'0" x 11'3"
Area: 123 sq. ft
Counted as living area: Yes

Heated: Yes
Finished: Yes
Enclosed: Yes
Contiguous: Yes
Permitted: Yes
Wet space: Yes
Addition: No
Conversion: No

11 Floor 1 - Bedroom



Dimensions: 10'0" x 12'1"
Area: 121 sq. ft
Counted as living area: Yes

Heated: Yes
Finished: Yes
Enclosed: Yes
Contiguous: Yes
Permitted: Yes
Wet space: No
Addition: No
Conversion: No

517 Elmer Lane, Rocky Mount, Franklin County, Virginia, United States, 24151

12 Floor 1 - W.I.C.



Dimensions: 7'6" x 10'4"
Area: 66 sq. ft
Counted as living area: Yes

Heated: Yes
Finished: Yes
Enclosed: Yes
Contiguous: Yes
Permitted: Yes
Wet space: No
Addition: No
Conversion: No

13 Floor 1 - Deck



Dimensions: 13'6" x 43'2"
Area: 480 sq. ft
Counted as living area: No

Heated: No
Finished: No
Enclosed: No
Contiguous: Yes
Permitted: Yes
Wet space: No
Addition: No
Conversion: No

14 Floor 1 - Hall

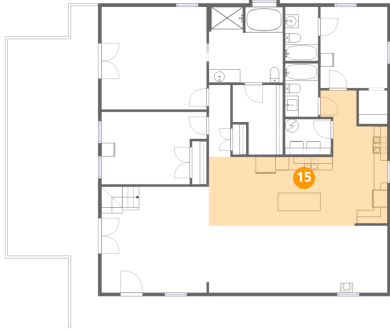


Dimensions: 3'3" x 10'8"
Area: 34 sq. ft
Counted as living area: Yes

Heated: Yes
Finished: Yes
Enclosed: Yes
Contiguous: Yes
Permitted: Yes
Wet space: No
Addition: No
Conversion: No

517 Elmer Lane, Rocky Mount, Franklin County, Virginia, United States, 24151

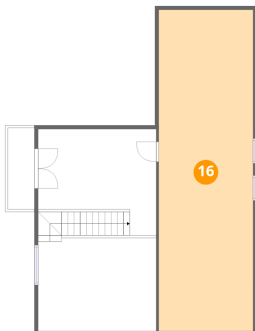
15 Floor 1 - Kitchen



Dimensions: 26'7" x 20'1"
Area: 333 sq. ft
Counted as living area: Yes

Heated: Yes
Finished: Yes
Enclosed: Yes
Contiguous: Yes
Permitted: Yes
Wet space: No
Addition: No
Conversion: No

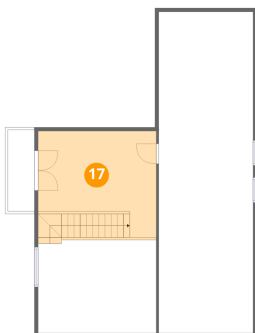
16 Floor 2 - Attic



Dimensions: 12'6" x 42'6"
Area: 531 sq. ft
Counted as living area: No

Heated: No
Finished: No
Enclosed: Yes
Contiguous: Yes
Permitted: Yes
Wet space: No
Addition: No
Conversion: No

17 Floor 2 - Sitting Room



Dimensions: 15'8" x 14'1"
Area: 227 sq. ft
Counted as living area: No

Heated: Yes
Finished: Yes
Enclosed: Yes
Contiguous: No
Permitted: Yes
Wet space: No
Addition: No
Conversion: No

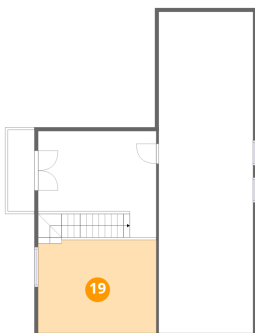
18 Floor 2 - Balcony



Dimensions: 3'6" x 10'9"
Area: 38 sq. ft
Counted as living area: No

Heated: No
Finished: No
Enclosed: No
Contiguous: Yes
Permitted: Yes
Wet space: No
Addition: No
Conversion: No

19 Floor 2 - Open To Below



Dimensions: 15'8" x 12'4"
Area: 191 sq. ft
Counted as living area: No

Heated: No
Finished: No
Enclosed: No
Contiguous: Yes
Permitted: No
Wet space: No
Addition: No
Conversion: No