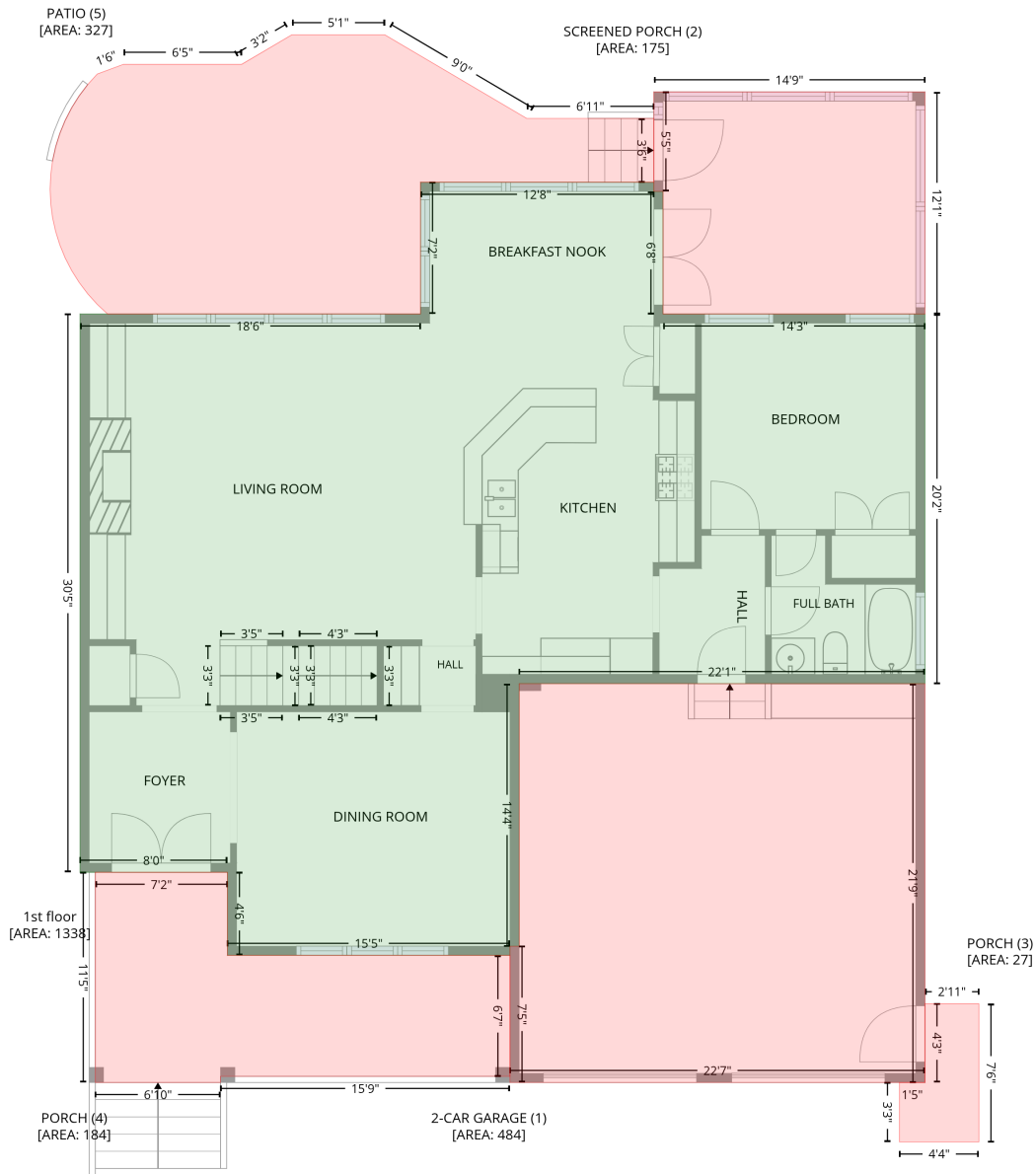


1005 Prairie Aster Court, Wake Forest, Wake County, North Carolina, United States, 27587

Gross Living Area: 3547 sq. ft

Level 1



Space	Area (sq. ft)	Calculation
1st floor (Living area)	1338	Coordinate Polygon Area Algorithm using inches $-((425.6 + 425.6) * (552.3 - 558.3) + (425.6 + 431.6) * (558.3 - 558.3) + (431.6 + 431.6) * (558.3 - 638.4) + (431.6 + 602.8) * (638.4 - 638.4) + (602.8 + 602.8) * (638.4 - 879.9) + (602.8 + 337.6) * (879.9 - 879.9) + (337.6 + 337.6) * (879.9 - 1051.5) + (337.6 + 331.6) * (1051.5 - 1051.5) + (331.6 + 331.6) * (1051.5 - 1057.5) + (331.6 + 147) * (1057.5 - 1057.5) + (147 + 147) * (1057.5 - 1003.2) + (147 + 50.7) * (1003.2 - 1003.2) + (50.7 + 50.7) * (1003.2 - 638.4) + (50.7 + 273.1) * (638.4 - 638.4) + (273.1 + 273.1) * (638.4 - 552.3) + (273.1 + 425.6) * (552.3 - 552.3)) * 0.5 * 0.00694$

1005 Prairie Aster Court, Wake Forest, Wake County, North Carolina, United States, 27587

Gross Living Area: 3547 sq. ft

Level 1

Space	Area (sq. ft)	Calculation <small>Coordinate Polygon Area Algorithm using inches</small>
2-CAR GARAGE (Non-living area)	484	$-\left((602.8 + 602.8) * (879.9 - 1140.6) + (602.8 + 331.6) * (1140.6 - 1140.6) + (331.6 + 331.6) * (1140.6 - 1051.5) + (331.6 + 337.6) * (1051.5 - 1051.5) + (337.6 + 337.6) * (1051.5 - 879.9) + (337.6 + 602.8) * (879.9 - 879.9)\right) * 0.5 * 0.00694$
SCREENED PORCH (Non-living area)	175	$-\left((602.8 + 602.8) * (493.2 - 638.4) + (602.8 + 431.6) * (638.4 - 638.4) + (431.6 + 431.6) * (638.4 - 558.3) + (431.6 + 425.6) * (558.3 - 558.3) + (425.6 + 425.6) * (558.3 - 493.2) + (425.6 + 602.8) * (493.2 - 493.2)\right) * 0.5 * 0.00694$
PORCH (Non-living area)	27	$-\left((638 + 638) * (1089.1 - 1179.4) + (638 + 586.1) * (1179.4 - 1179.4) + (586.1 + 586.1) * (1179.4 - 1140.6) + (586.1 + 602.8) * (1140.6 - 1140.6) + (602.8 + 602.8) * (1140.6 - 1089.1) + (602.8 + 638) * (1089.1 - 1089.1)\right) * 0.5 * 0.00694$
PORCH (Non-living area)	184	$-\left((147 + 147) * (1003.2 - 1057.5) + (147 + 331.6) * (1057.5 - 1057.5) + (331.6 + 331.6) * (1057.5 - 1136.6) + (331.6 + 142.6) * (1136.6 - 1136.6) + (142.6 + 142.6) * (1136.6 - 1140.6) + (142.6 + 60.7) * (1140.6 - 1140.6) + (60.7 + 60.7) * (1140.6 - 1003.2) + (60.7 + 147) * (1003.2 - 1003.2)\right) * 0.5 * 0.00694$
PATIO (Non-living area)	327	$-\left((249.8 + 342.5) * (455.8 - 510.5) + (342.5 + 425.6) * (510.5 - 510.5) + (425.6 + 425.6) * (510.5 - 552.3) + (425.6 + 273.1) * (552.3 - 552.3) + (273.1 + 273.1) * (552.3 - 638.4) + (273.1 + 68.7) * (638.4 - 638.4) + (68.7 + 61.9) * (638.4 - 632) + (61.9 + 55.7) * (632 - 625.2) + (55.7 + 50.2) * (625.2 - 617.8) + (50.2 + 45.2) * (617.8 - 609.9) + (45.2 + 41) * (609.9 - 601.7) + (41 + 37.5) * (601.7 - 593.1) + (37.5 + 34.7) * (593.1 - 584.3) + (34.7 + 32.8) * (584.3 - 575.2) + (32.8 + 31.6) * (575.2 - 566) + (31.6 + 31.2) * (566 - 556.8) + (31.2 + 31.6) * (556.8 - 547.5) + (31.6 + 32.8) * (547.5 - 538.4) + (32.8 + 34.7) * (538.4 - 529.3) + (34.7 + 37.5) * (529.3 - 520.5) + (37.5 + 41) * (520.5 - 511.9) + (41 + 45.2) * (511.9 - 503.7) + (45.2 + 50.2) * (503.7 - 495.8) + (50.2 + 55.7) * (495.8 - 488.4) + (55.7 + 61.9) * (488.4 - 481.5) + (61.9 + 79.1) * (481.5 - 475.2) + (79.1 + 156.3) * (475.2 - 475.2) + (156.3 + 189.2) * (475.2 - 455.8) + (189.2 + 249.8) * (455.8 - 455.8)\right) * 0.5 * 0.00694$

1005 Prairie Aster Court, Wake Forest, Wake County, North Carolina, United States, 27587

Gross Living Area: 3547 sq. ft

Level 3

Space	Area (sq. ft)	Calculation <small>Coordinate Polygon Area Algorithm using inches</small>
LOW CEILING (Non-living area)	38	$-((484.6 + 484.6) * (952.1 - 986.2) + (484.6 + 425.6) * (986.2 - 986.2) + (425.6 + 425.6) * (986.2 - 1057.5) + (425.6 + 393.3) * (1057.5 - 1057.5) + (393.3 + 393.3) * (1057.5 - 952.1) + (393.3 + 484.6) * (952.1 - 952.1)) * 0.5 * 0.00694$
LOW CEILING (Non-living area)	15	$-((152.3 + 152.3) * (905.5 - 926.8) + (152.3 + 146.3) * (926.8 - 932.8) + (146.3 + 72.3) * (932.8 - 932.8) + (72.3 + 72.3) * (932.8 - 905.5) + (72.3 + 152.3) * (905.5 - 905.5)) * 0.5 * 0.00694$
LOW CEILING (Non-living area)	28	$-((602.8 + 602.8) * (840.3 - 878.9) + (602.8 + 496.4) * (878.9 - 878.9) + (496.4 + 496.4) * (878.9 - 840.3) + (496.4 + 602.8) * (840.3 - 840.3)) * 0.5 * 0.00694$
LOW CEILING (Non-living area)	204	$-((602.8 + 602.8) * (638.4 - 719.9) + (602.8 + 249.2) * (719.9 - 719.9) + (249.2 + 249.2) * (719.9 - 721.3) + (249.2 + 243.2) * (721.3 - 715.3) + (243.2 + 243.2) * (715.3 - 638.4) + (243.2 + 602.8) * (638.4 - 638.4)) * 0.5 * 0.00694$
ATTIC (Non-living area)	164	$-((602.8 + 602.8) * (719.9 - 840.3) + (602.8 + 496.4) * (840.3 - 840.3) + (496.4 + 496.4) * (840.3 - 763.7) + (496.4 + 249.2) * (763.7 - 763.7) + (249.2 + 249.2) * (763.7 - 719.9) + (249.2 + 602.8) * (719.9 - 719.9)) * 0.5 * 0.00694$