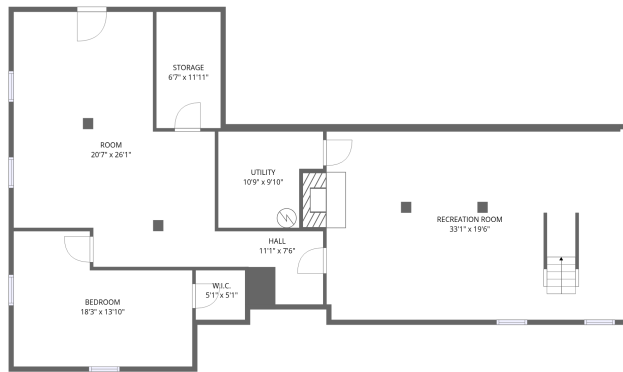
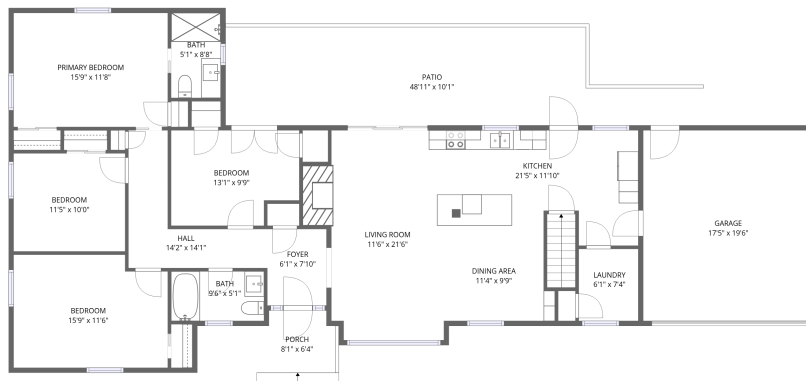


## Home data report

**3751 Londonderry Drive Southwest, South Roanoke, Roanoke, Roanoke city, Virginia, United States, 24014**



**Total Area: 2972 sq. ft**

Basement: 1373 sq. ft, 1st Floor: 1599 sq. ft

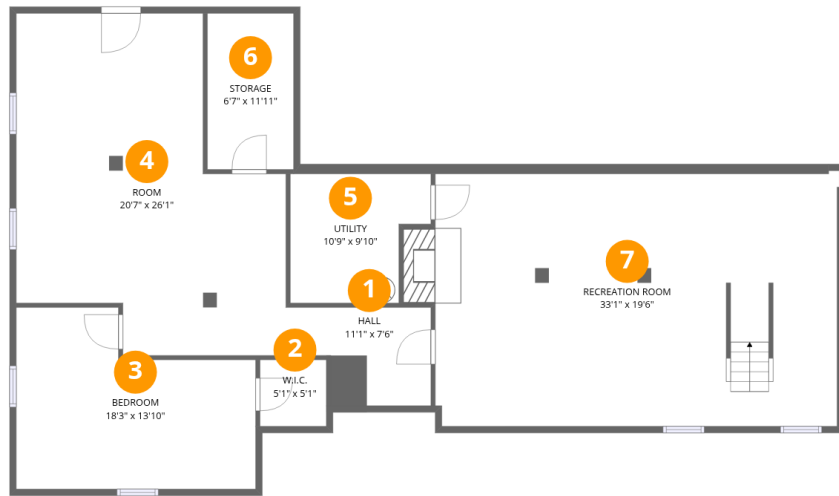
Excluded: Utility 91 sq. ft, Storage 78 sq. ft, Garage 340 sq. ft, Porch 49 sq. ft, Patio 416 sq. ft, Walls: 246 sq. ft

## Property summary



## Home data report

3751 Londonderry Drive Southwest, South Roanoke, Roanoke, Roanoke city, Virginia, United States, 24014



## Room dimensions

Floor 1 Below grade

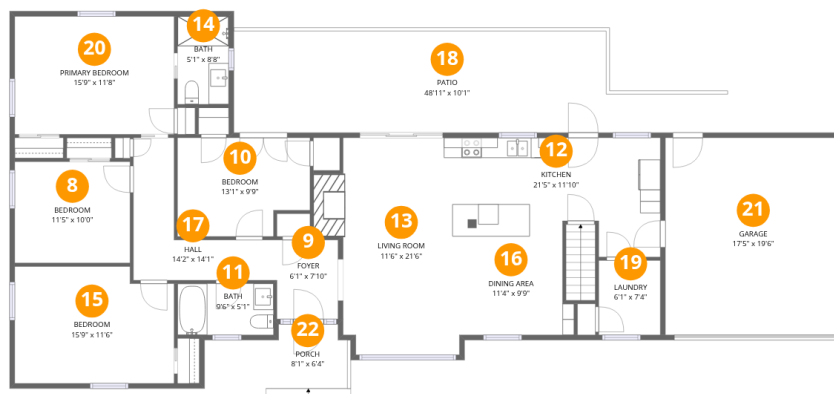
Total:1373sqft

Excluded: 169sqft

#		Dimensions	sqft	Counted as living area
1	Hall	11'1" x 7'6"	70 sq. ft	Yes
2	W.I.C.	5'1" x 5'1"	26 sq. ft	Yes
3	Bedroom	18'3" x 13'10"	212 sq. ft	Yes
4	Room	20'7" x 26'1"	428 sq. ft	Yes
5	Utility	10'9" x 9'10"	91 sq. ft	No
6	Storage	6'7" x 11'11"	78 sq. ft	No
7	Recreation Room	33'1" x 19'6"	605 sq. ft	Yes

Home data report

3751 Londonderry Drive Southwest, South Roanoke, Roanoke, Roanoke city, Virginia, United States, 24014



## Room dimensions

Floor 2

Total:1599sqft Excluded: 805sqft

#		Dimensions	sqft	Counted as living area
8	Bedroom	11'5" x 10'0"	115 sq. ft	Yes
9	Foyer	6'1" x 7'10"	47 sq. ft	Yes
10	Bedroom	13'1" x 9'9"	119 sq. ft	Yes
11	Bath	9'6" x 5'1"	48 sq. ft	Yes
12	Kitchen	21'5" x 11'10"	216 sq. ft	Yes
13	Living Room	11'6" x 21'6"	248 sq. ft	Yes
14	Bath	5'1" x 8'8"	44 sq. ft	Yes
15	Bedroom	15'9" x 11'6"	175 sq. ft	Yes
16	Dining Area	11'4" x 9'9"	103 sq. ft	Yes
17	Hall	14'2" x 14'1"	98 sq. ft	Yes
18	Patio	48'11" x 10'1"	416 sq. ft	No

Home data report

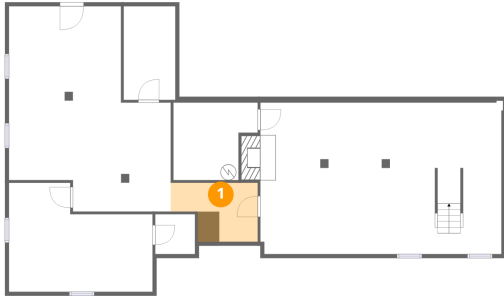
**3751 Londonderry Drive Southwest, South Roanoke, Roanoke,  
Roanoke city, Virginia, United States, 24014**

#		Dimensions	sqft	Counted as living area
19	Laundry	6'1" x 7'4"	45 sq. ft	Yes
20	Primary Bedroom	15'9" x 11'8"	184 sq. ft	Yes
21	Garage	17'5" x 19'6"	340 sq. ft	No
22	Porch	8'1" x 6'4"	49 sq. ft	No

3751 Londonderry Drive Southwest, South Roanoke, Roanoke,  
Roanoke city, Virginia, United States, 24014

**1** Floor 1 - Hall

---

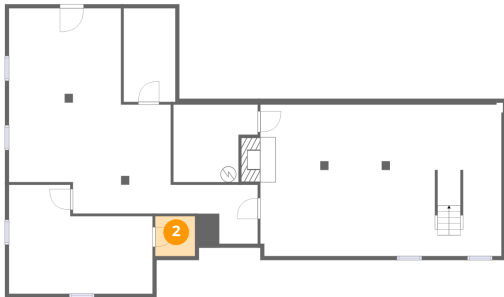


Dimensions: 11'1" x 7'6"  
Area: 70 sq. ft  
Counted as living area: Yes

Heated: Yes  
Finished: Yes  
Enclosed: Yes  
Contiguous: Yes  
Permitted: Yes  
Wet space: No  
Addition: No  
Conversion: No

**2** Floor 1 - W.I.C.

---

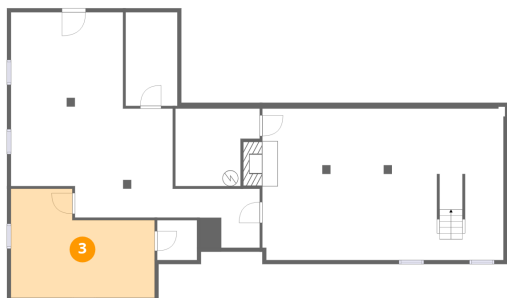


Dimensions: 5'1" x 5'1"  
Area: 26 sq. ft  
Counted as living area: Yes

Heated: Yes  
Finished: Yes  
Enclosed: Yes  
Contiguous: Yes  
Permitted: Yes  
Wet space: No  
Addition: No  
Conversion: No

3751 Londonderry Drive Southwest, South Roanoke, Roanoke,  
Roanoke city, Virginia, United States, 24014

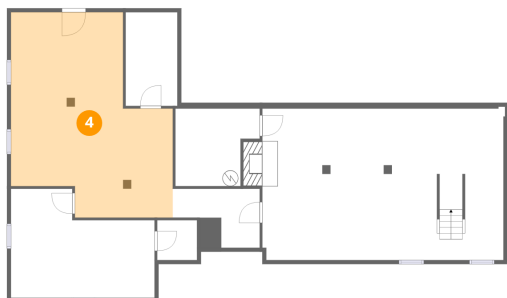
**3** Floor 1 - Bedroom



Dimensions: 18'3" x 13'10"  
Area: 212 sq. ft  
Counted as living area: Yes

Heated: Yes  
Finished: Yes  
Enclosed: Yes  
Contiguous: Yes  
Permitted: Yes  
Wet space: No  
Addition: No  
Conversion: No

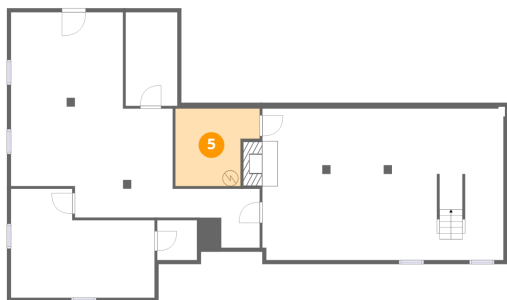
**4** Floor 1 - Room



Dimensions: 20'7" x 26'1"  
Area: 428 sq. ft  
Counted as living area: Yes

Heated: Yes  
Finished: Yes  
Enclosed: Yes  
Contiguous: Yes  
Permitted: Yes  
Wet space: No  
Addition: No  
Conversion: No

**5** Floor 1 - Utility

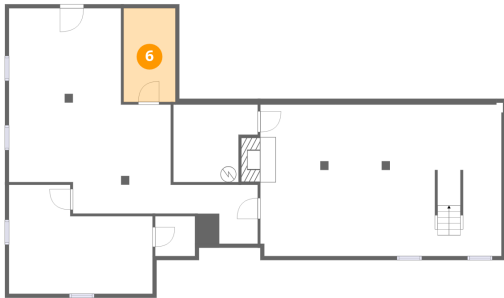


Dimensions: 10'9" x 9'10"  
Area: 91 sq. ft  
Counted as living area: No

Heated: Yes  
Finished: No  
Enclosed: Yes  
Contiguous: Yes  
Permitted: Yes  
Wet space: No  
Addition: No  
Conversion: No

3751 Londonderry Drive Southwest, South Roanoke, Roanoke,  
Roanoke city, Virginia, United States, 24014

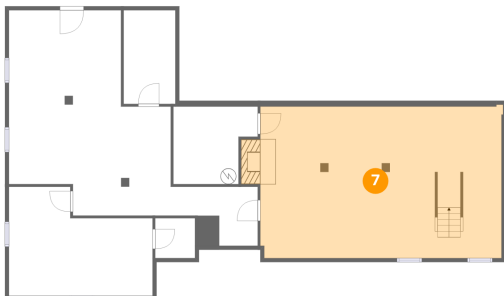
**6** Floor 1 - Storage



Dimensions: 6'7" x 11'11"  
Area: 78 sq. ft  
Counted as living area: No

Heated: No  
Finished: No  
Enclosed: No  
Contiguous: Yes  
Permitted: Yes  
Wet space: No  
Addition: No  
Conversion: No

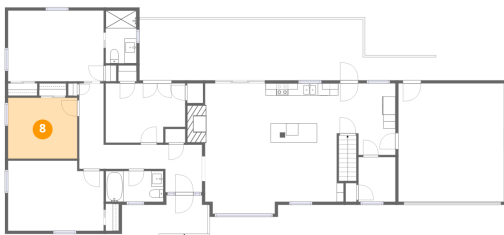
**7** Floor 1 - Recreation Room



Dimensions: 33'1" x 19'6"  
Area: 605 sq. ft  
Counted as living area: Yes

Heated: Yes  
Finished: Yes  
Enclosed: Yes  
Contiguous: Yes  
Permitted: Yes  
Wet space: No  
Addition: No  
Conversion: No

**8** Floor 2 - Bedroom

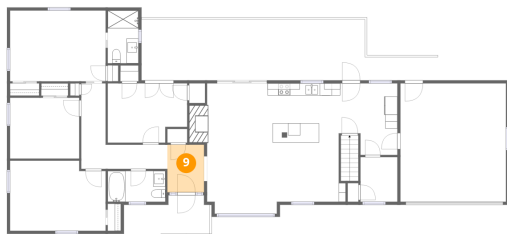


Dimensions: 11'5" x 10'0"  
Area: 115 sq. ft  
Counted as living area: Yes

Heated: Yes  
Finished: Yes  
Enclosed: Yes  
Contiguous: Yes  
Permitted: Yes  
Wet space: No  
Addition: No  
Conversion: No

3751 Londonderry Drive Southwest, South Roanoke, Roanoke, Roanoke city, Virginia, United States, 24014

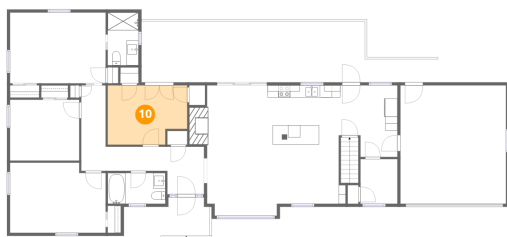
**9** Floor 2 - Foyer



Dimensions: 6'1" x 7'10"  
Area: 47 sq. ft  
Counted as living area: Yes

Heated: Yes  
Finished: Yes  
Enclosed: Yes  
Contiguous: Yes  
Permitted: Yes  
Wet space: No  
Addition: No  
Conversion: No

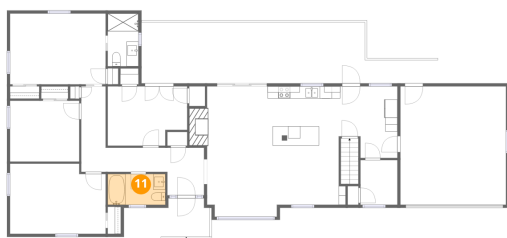
**10** Floor 2 - Bedroom



Dimensions: 13'1" x 9'9"  
Area: 119 sq. ft  
Counted as living area: Yes

Heated: Yes  
Finished: Yes  
Enclosed: Yes  
Contiguous: Yes  
Permitted: Yes  
Wet space: No  
Addition: No  
Conversion: No

**11** Floor 2 - Bath

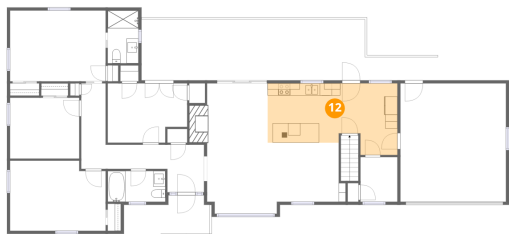


Dimensions: 9'6" x 5'1"  
Area: 48 sq. ft  
Counted as living area: Yes

Heated: Yes  
Finished: Yes  
Enclosed: Yes  
Contiguous: Yes  
Permitted: Yes  
Wet space: Yes  
Addition: No  
Conversion: No

3751 Londonderry Drive Southwest, South Roanoke, Roanoke,  
Roanoke city, Virginia, United States, 24014

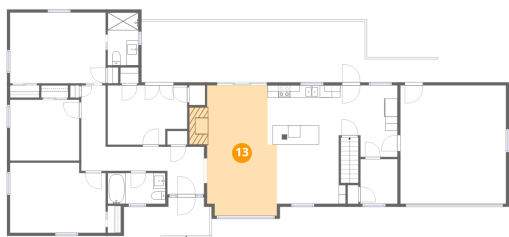
## 12 Floor 2 - Kitchen



Dimensions: 21'5" x 11'10"  
Area: 216 sq. ft  
Counted as living area: Yes

Heated: Yes  
Finished: Yes  
Enclosed: Yes  
Contiguous: Yes  
Permitted: Yes  
Wet space: No  
Addition: No  
Conversion: No

## 13 Floor 2 - Living Room



Dimensions: 11'6" x 21'6"  
Area: 248 sq. ft  
Counted as living area: Yes

Heated: Yes  
Finished: Yes  
Enclosed: Yes  
Contiguous: Yes  
Permitted: Yes  
Wet space: No  
Addition: No  
Conversion: No

## 14 Floor 2 - Bath

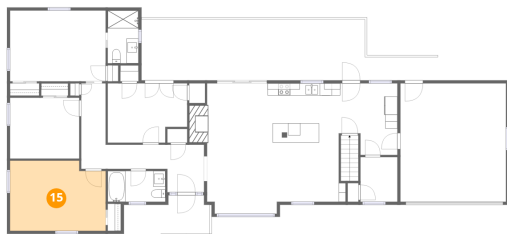


Dimensions: 5'1" x 8'8"  
Area: 44 sq. ft  
Counted as living area: Yes

Heated: Yes  
Finished: Yes  
Enclosed: Yes  
Contiguous: Yes  
Permitted: Yes  
Wet space: Yes  
Addition: No  
Conversion: No

3751 Londonderry Drive Southwest, South Roanoke, Roanoke,  
Roanoke city, Virginia, United States, 24014

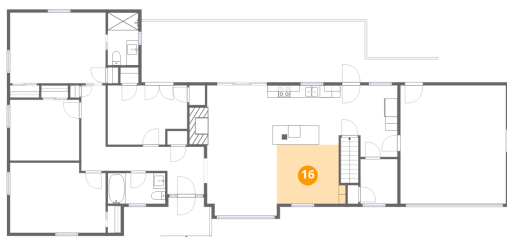
**15** Floor 2 - Bedroom



Dimensions: 15'9" x 11'6"  
Area: 175 sq. ft  
Counted as living area: Yes

Heated: Yes  
Finished: Yes  
Enclosed: Yes  
Contiguous: Yes  
Permitted: Yes  
Wet space: No  
Addition: No  
Conversion: No

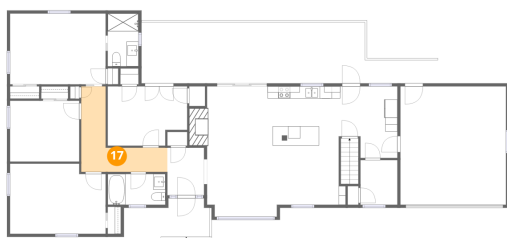
**16** Floor 2 - Dining Area



Dimensions: 11'4" x 9'9"  
Area: 103 sq. ft  
Counted as living area: Yes

Heated: Yes  
Finished: Yes  
Enclosed: Yes  
Contiguous: Yes  
Permitted: Yes  
Wet space: No  
Addition: No  
Conversion: No

**17** Floor 2 - Hall



Dimensions: 14'2" x 14'1"  
Area: 98 sq. ft  
Counted as living area: Yes

Heated: Yes  
Finished: Yes  
Enclosed: Yes  
Contiguous: Yes  
Permitted: Yes  
Wet space: No  
Addition: No  
Conversion: No

3751 Londonderry Drive Southwest, South Roanoke, Roanoke,  
Roanoke city, Virginia, United States, 24014

**18** Floor 2 - Patio



Dimensions: 48'11" x 10'1"  
Area: 416 sq. ft  
Counted as living area: No

Heated: No  
Finished: No  
Enclosed: No  
Contiguous: Yes  
Permitted: Yes  
Wet space: No  
Addition: No  
Conversion: No

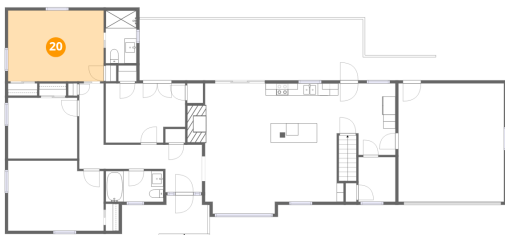
**19** Floor 2 - Laundry



Dimensions: 6'1" x 7'4"  
Area: 45 sq. ft  
Counted as living area: Yes

Heated: Yes  
Finished: Yes  
Enclosed: Yes  
Contiguous: Yes  
Permitted: Yes  
Wet space: No  
Addition: No  
Conversion: No

**20** Floor 2 - Primary Bedroom



Dimensions: 15'9" x 11'8"  
Area: 184 sq. ft  
Counted as living area: Yes

Heated: Yes  
Finished: Yes  
Enclosed: Yes  
Contiguous: Yes  
Permitted: Yes  
Wet space: No  
Addition: No  
Conversion: No

**3751 Londonderry Drive Southwest, South Roanoke, Roanoke,  
Roanoke city, Virginia, United States, 24014**

**21 Floor 2 - Garage**

---



Dimensions: 17'5" x 19'6"  
Area: 340 sq. ft  
Counted as living area: No

Heated: No  
Finished: No  
Enclosed: Yes  
Contiguous: Yes  
Permitted: Yes  
Wet space: No  
Addition: No  
Conversion: No

**22 Floor 2 - Porch**

---



Dimensions: 8'1" x 6'4"  
Area: 49 sq. ft  
Counted as living area: No

Heated: No  
Finished: No  
Enclosed: No  
Contiguous: Yes  
Permitted: Yes  
Wet space: No  
Addition: No  
Conversion: No