

Home data report

120 Nottingham Boulevard, Douglas Grove, Martinsburg,
Berkeley County, West Virginia, United States, 25405




Total Area: 1353 sq. ft


Basement 1: 0 sq. ft, 1st Floor: 1353 sq. ft

Excluded: Basement 1260 sq. ft, Garage 254 sq. ft, Deck 105 sq. ft, Walls: 175 sq. ft

Property summary

 **2** Floors

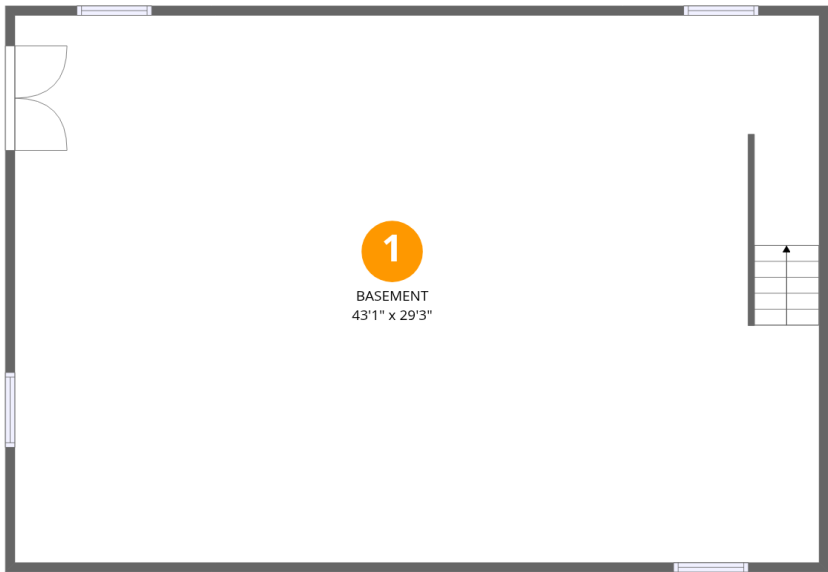
 **3** Bedrooms

 **2** Bathrooms

 **1** Garages

Home data report

120 Nottingham Boulevard, Douglas Grove, Martinsburg,
Berkeley County, West Virginia, United States, 25405

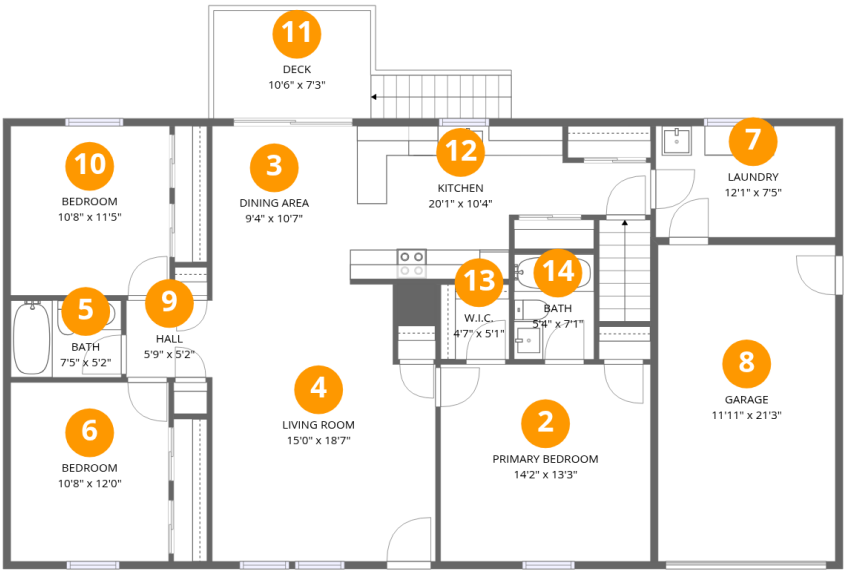


Room dimensions

Floor 1 Below grade Total:0sqft Excluded: 1260sqft

#		Dimensions	sqft	Counted as living area
1	Basement	43'1" x 29'3"	1258 sq. ft	No

120 Nottingham Boulevard, Douglas Grove, Martinsburg,
Berkeley County, West Virginia, United States, 25405



Room dimensions

Floor 2 Total:1353sqft Excluded: 359sqft

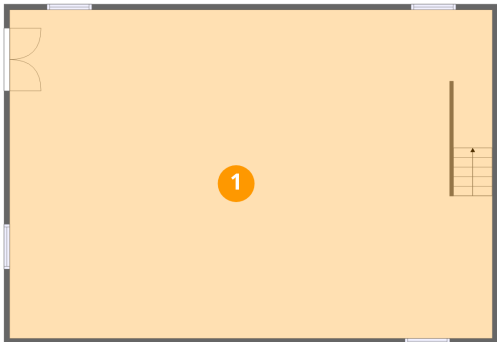
#		Dimensions	sqft	Counted as living area
2	Primary Bedroom	14'2" x 13'3"	187 sq. ft	Yes
3	Dining Area	9'4" x 10'7"	99 sq. ft	Yes
4	Living Room	15'0" x 18'7"	279 sq. ft	Yes
5	Bath	7'5" x 5'2"	39 sq. ft	Yes
6	Bedroom	10'8" x 12'0"	128 sq. ft	Yes
7	Laundry	12'1" x 7'5"	90 sq. ft	Yes
8	Garage	11'11" x 21'3"	253 sq. ft	No
9	Hall	5'9" x 5'2"	30 sq. ft	Yes
10	Bedroom	10'8" x 11'5"	122 sq. ft	Yes
11	Deck	10'6" x 7'3"	76 sq. ft	No
12	Kitchen	20'1" x 10'4"	207 sq. ft	Yes

Home data report

120 Nottingham Boulevard, Douglas Grove, Martinsburg,
Berkeley County, West Virginia, United States, 25405

#		Dimensions	sqft	Counted as living area
13	W.I.C.	4'7" x 5'1"	23 sq. ft	Yes
14	Bath	5'4" x 7'1"	38 sq. ft	Yes

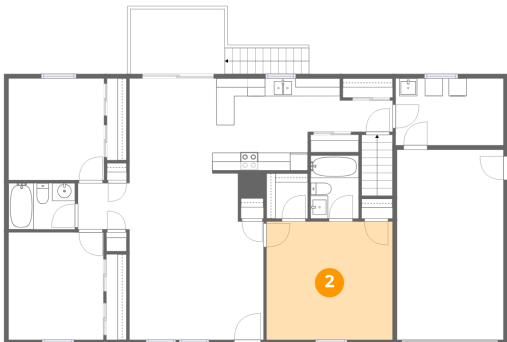
1 Floor 1 - Basement



Dimensions: 43'1" x 29'3"
Area: 1258 sq. ft
Counted as living area: No

Heated: Yes
Finished: No
Enclosed: Yes
Contiguous: Yes
Permitted: Yes
Wet space: No
Addition: No
Conversion: No

2 Floor 2 - Primary Bedroom

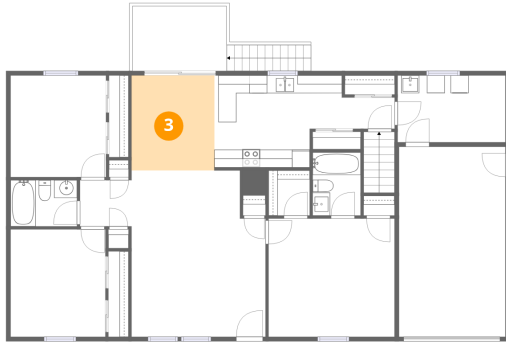


Dimensions: 14'2" x 13'3"
Area: 187 sq. ft
Counted as living area: Yes

Heated: Yes
Finished: Yes
Enclosed: Yes
Contiguous: Yes
Permitted: Yes
Wet space: No
Addition: No
Conversion: No

120 Nottingham Boulevard, Douglas Grove, Martinsburg,
Berkeley County, West Virginia, United States, 25405

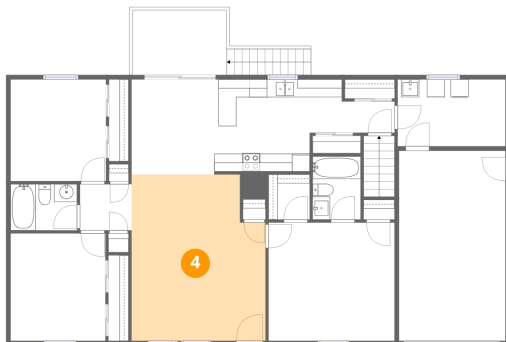
3 Floor 2 - Dining Area



Dimensions: 9'4" x 10'7"
Area: 99 sq. ft
Counted as living area: Yes

Heated: Yes
Finished: Yes
Enclosed: Yes
Contiguous: Yes
Permitted: Yes
Wet space: No
Addition: No
Conversion: No

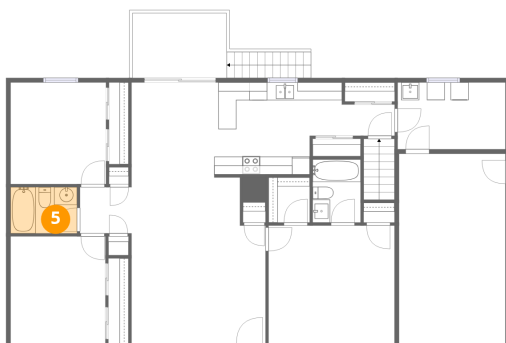
4 Floor 2 - Living Room



Dimensions: 15'0" x 18'7"
Area: 279 sq. ft
Counted as living area: Yes

Heated: Yes
Finished: Yes
Enclosed: Yes
Contiguous: Yes
Permitted: Yes
Wet space: No
Addition: No
Conversion: No

5 Floor 2 - Bath



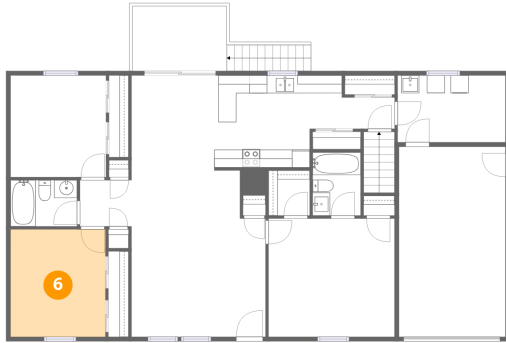
Dimensions: 7'5" x 5'2"
Area: 39 sq. ft
Counted as living area: Yes

Heated: Yes
Finished: Yes
Enclosed: Yes
Contiguous: Yes
Permitted: Yes
Wet space: Yes
Addition: No
Conversion: No

Home data report

120 Nottingham Boulevard, Douglas Grove, Martinsburg,
Berkeley County, West Virginia, United States, 25405

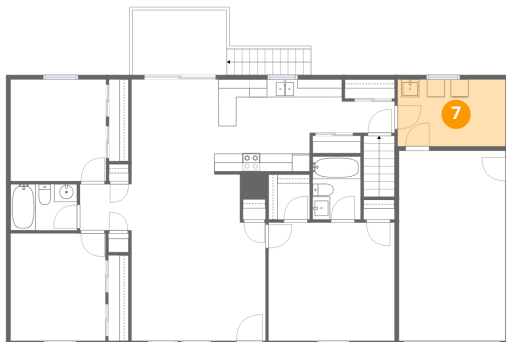
6 Floor 2 - Bedroom



Dimensions: 10'8" x 12'0"
Area: 128 sq. ft
Counted as living area: Yes

Heated: Yes
Finished: Yes
Enclosed: Yes
Contiguous: Yes
Permitted: Yes
Wet space: No
Addition: No
Conversion: No

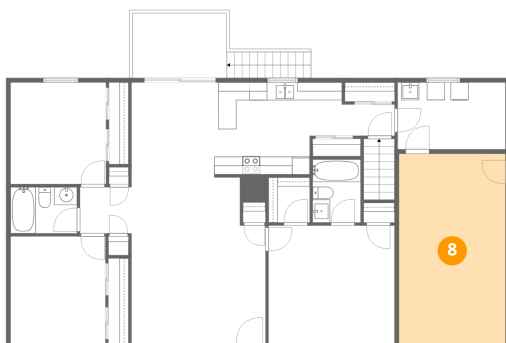
7 Floor 2 - Laundry



Dimensions: 12'1" x 7'5"
Area: 90 sq. ft
Counted as living area: Yes

Heated: Yes
Finished: Yes
Enclosed: Yes
Contiguous: Yes
Permitted: Yes
Wet space: No
Addition: No
Conversion: No

8 Floor 2 - Garage



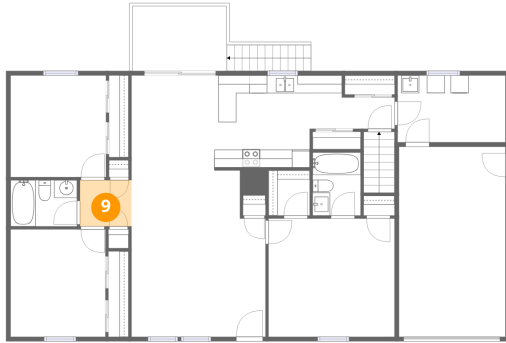
Dimensions: 11'11" x 21'3"
Area: 253 sq. ft
Counted as living area: No

Heated: No
Finished: No
Enclosed: Yes
Contiguous: Yes
Permitted: Yes
Wet space: No
Addition: No
Conversion: No

Home data report

120 Nottingham Boulevard, Douglas Grove, Martinsburg,
Berkeley County, West Virginia, United States, 25405

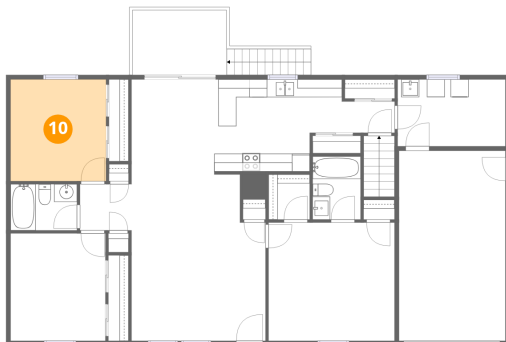
9 Floor 2 - Hall



Dimensions: 5'9" x 5'2"
Area: 30 sq. ft
Counted as living area: Yes

Heated: Yes
Finished: Yes
Enclosed: Yes
Contiguous: Yes
Permitted: Yes
Wet space: No
Addition: No
Conversion: No

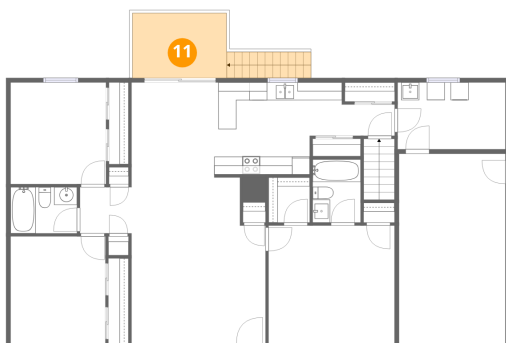
10 Floor 2 - Bedroom



Dimensions: 10'8" x 11'5"
Area: 122 sq. ft
Counted as living area: Yes

Heated: Yes
Finished: Yes
Enclosed: Yes
Contiguous: Yes
Permitted: Yes
Wet space: No
Addition: No
Conversion: No

11 Floor 2 - Deck



Dimensions: 10'6" x 7'3"
Area: 76 sq. ft
Counted as living area: No

Heated: No
Finished: No
Enclosed: No
Contiguous: Yes
Permitted: Yes
Wet space: No
Addition: No
Conversion: No

Home data report

120 Nottingham Boulevard, Douglas Grove, Martinsburg,
Berkeley County, West Virginia, United States, 25405

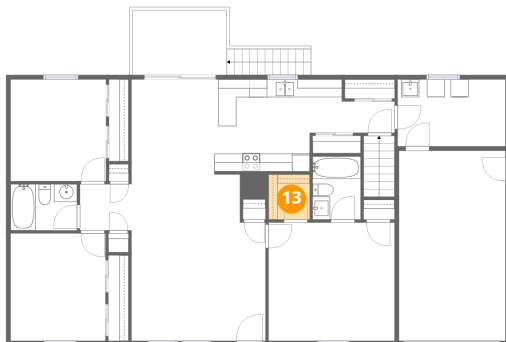
12 Floor 2 - Kitchen



Dimensions: 20'1" x 10'4"
Area: 207 sq. ft
Counted as living area: Yes

Heated: Yes
Finished: Yes
Enclosed: Yes
Contiguous: Yes
Permitted: Yes
Wet space: No
Addition: No
Conversion: No

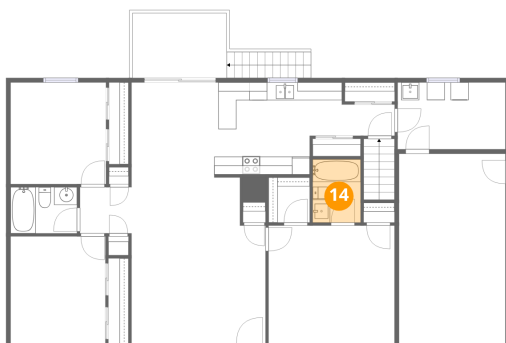
13 Floor 2 - W.I.C.



Dimensions: 4'7" x 5'1"
Area: 23 sq. ft
Counted as living area: Yes

Heated: Yes
Finished: Yes
Enclosed: Yes
Contiguous: Yes
Permitted: Yes
Wet space: No
Addition: No
Conversion: No

14 Floor 2 - Bath



Dimensions: 5'4" x 7'1"
Area: 38 sq. ft
Counted as living area: Yes

Heated: Yes
Finished: Yes
Enclosed: Yes
Contiguous: Yes
Permitted: Yes
Wet space: Yes
Addition: No
Conversion: No