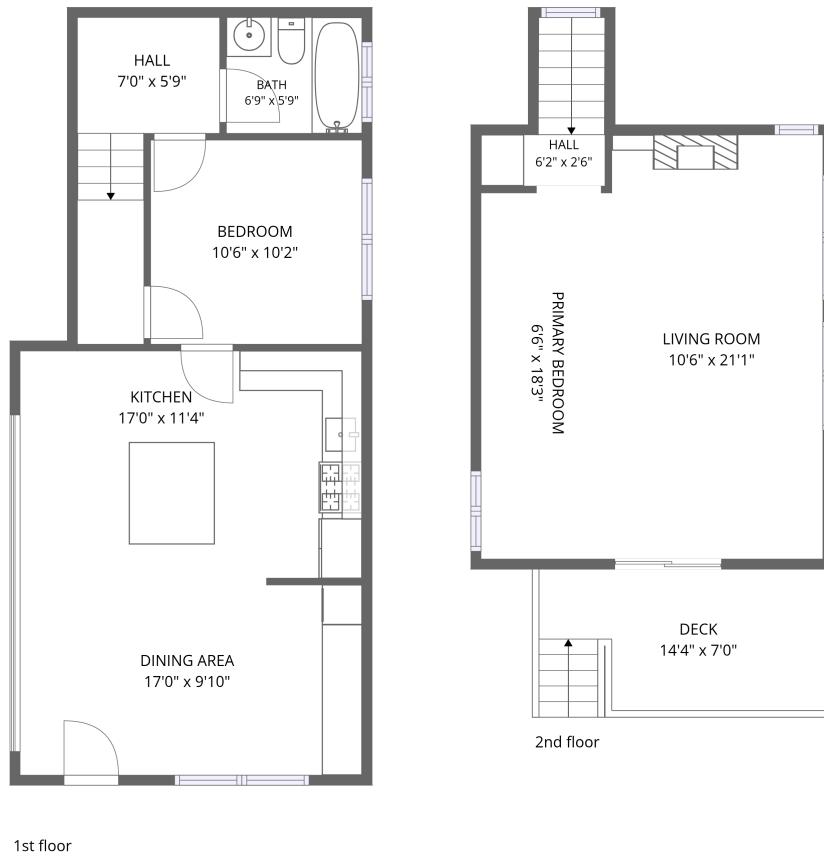


Home data report

# 1940 Aspen St, Los Osos, CA, US




**Total Area: 974 sq. ft**

1st Floor: 595 sq. ft, 2nd Floor: 379 sq. ft

Excluded: Deck 88 sq. ft, Walls: 100 sq. ft

## Property summary

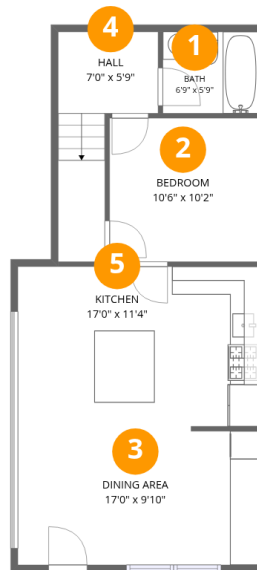
 **2** Floors

 **2** Bedrooms

 **1** Bathrooms

# Home data report

## 1940 Aspen St, Los Osos, CA, US



### Room dimensions

Floor 1

Total: 595 sqft Excluded: 0 sqft

#		Dimensions	sqft	Counted as living area
1	Bath	6'9" x 5'9"	39 sq. ft	Yes
2	Bedroom	10'6" x 10'2"	107 sq. ft	Yes
3	Dining Area	17'0" x 9'10"	165 sq. ft	Yes
4	Hall	7'0" x 5'9"	52 sq. ft	Yes
5	Kitchen	17'0" x 11'4"	193 sq. ft	Yes



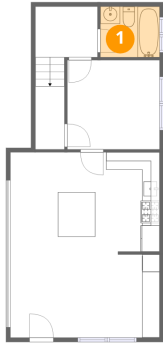
## Room dimensions

Floor 2

Total: 379 sqft Excluded: 88 sqft

#		Dimensions	sqft	Counted as living area
6	Hall	6'2" x 2'6"	35 sq. ft	Yes
7	Primary Bedroom	6'6" x 18'3"	119 sq. ft	Yes
8	Deck	14'4" x 7'0"	88 sq. ft	No
9	Living Room	10'6" x 21'1"	222 sq. ft	Yes

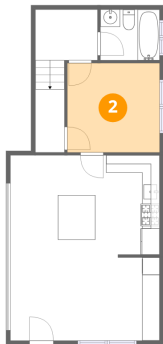
## 1 Floor 1 - Bath



Dimensions: 6'9" x 5'9"  
Area: 39 sq. ft  
Counted as living area: Yes

Heated: Yes  
Finished: Yes  
Enclosed: Yes  
Contiguous: Yes  
Permitted: Yes  
Wet space: Yes  
Addition: No  
Conversion: No

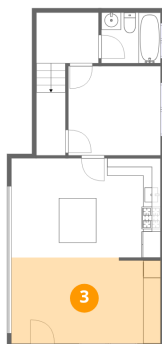
## 2 Floor 1 - Bedroom



Dimensions: 10'6" x 10'2"  
Area: 107 sq. ft  
Counted as living area: Yes

Heated: Yes  
Finished: Yes  
Enclosed: Yes  
Contiguous: Yes  
Permitted: Yes  
Wet space: No  
Addition: No  
Conversion: No

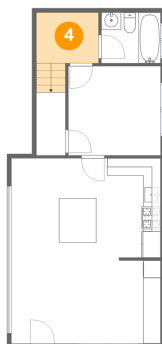
### 3 Floor 1 - Dining Area



Dimensions: 17'0" x 9'10"  
Area: 165 sq. ft  
Counted as living area: Yes

Heated: Yes  
Finished: Yes  
Enclosed: Yes  
Contiguous: Yes  
Permitted: Yes  
Wet space: No  
Addition: No  
Conversion: No

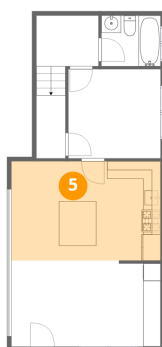
### 4 Floor 1 - Hall



Dimensions: 7'0" x 5'9"  
Area: 52 sq. ft  
Counted as living area: Yes

Heated: Yes  
Finished: Yes  
Enclosed: Yes  
Contiguous: Yes  
Permitted: Yes  
Wet space: No  
Addition: No  
Conversion: No

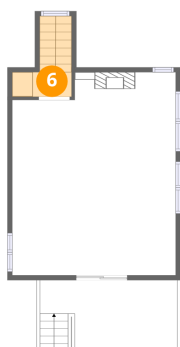
### 5 Floor 1 - Kitchen



Dimensions: 17'0" x 11'4"  
Area: 193 sq. ft  
Counted as living area: Yes

Heated: Yes  
Finished: Yes  
Enclosed: Yes  
Contiguous: Yes  
Permitted: Yes  
Wet space: No  
Addition: No  
Conversion: No

### 6 Floor 2 - Hall



Dimensions: 6'2" x 2'6"  
Area: 35 sq. ft  
Counted as living area: Yes

Heated: Yes  
Finished: Yes  
Enclosed: Yes  
Contiguous: Yes  
Permitted: Yes  
Wet space: No  
Addition: No  
Conversion: No

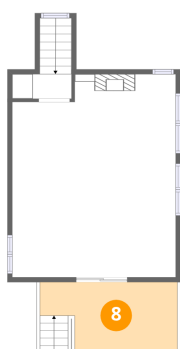
### 7 Floor 2 - Primary Bedroom



Dimensions: 6'6" x 18'3"  
Area: 119 sq. ft  
Counted as living area: Yes

Heated: Yes  
Finished: Yes  
Enclosed: Yes  
Contiguous: Yes  
Permitted: Yes  
Wet space: No  
Addition: No  
Conversion: No

### 8 Floor 2 - Deck

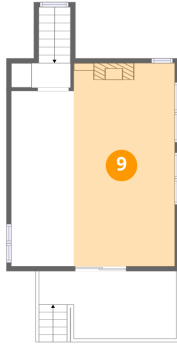


Dimensions: 14'4" x 7'0"  
Area: 88 sq. ft  
Counted as living area: No

Heated: No  
Finished: No  
Enclosed: No  
Contiguous: Yes  
Permitted: Yes  
Wet space: No  
Addition: No  
Conversion: No

**9** Floor 2 - Living Room

---



**Dimensions:** 10'6" x 21'1"  
**Area:** 222 sq. ft  
**Counted as living area:** Yes

**Heated:** Yes  
**Finished:** Yes  
**Enclosed:** Yes  
**Contiguous:** Yes  
**Permitted:** Yes  
**Wet space:** No  
**Addition:** No  
**Conversion:** No