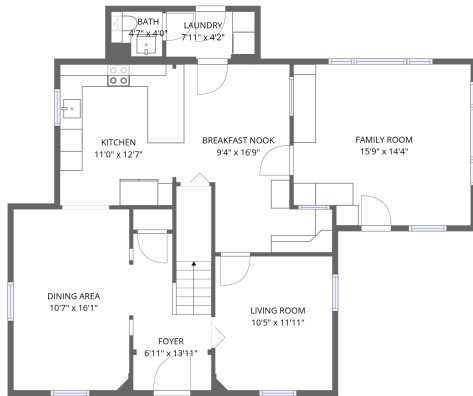
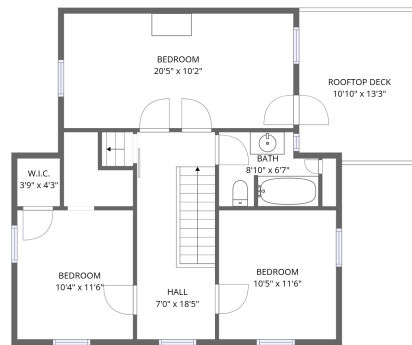


Home data report

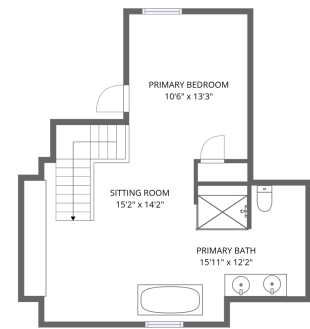
30 Emily Street, Carleton Place, Lanark County, Ontario, Canada,
K7C 1S2



1st floor



2nd floor



3rd floor

Total Area: 2103 sq. ft

1st Floor: 1005 sq. ft, 2nd Floor: 720 sq. ft, 3rd Floor: 378 sq. ft

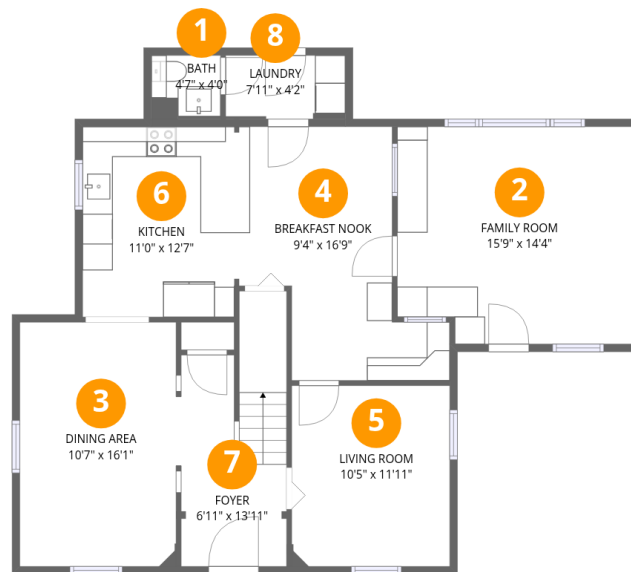
Excluded: Rooftop deck 148 sq. ft, Low ceiling 105 sq. ft, Walls: 186 sq. ft

Property summary



Home data report

30 Emily Street, Carleton Place, Lanark County, Ontario, Canada, K7C 1S2



Room dimensions

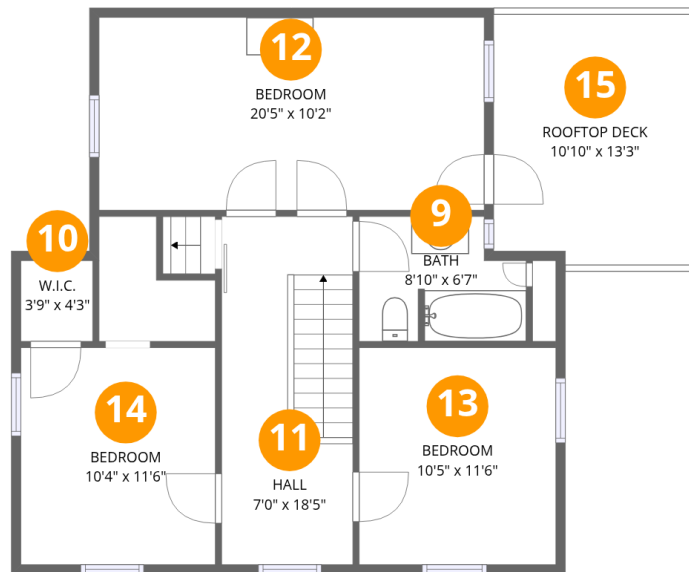
Floor 1

Total:1005sqft Excluded: 0sqft

#		Dimensions	sqft	Counted as living area
1	Bath	4'7" x 4'0"	18 sq. ft	Yes
2	Family Room	15'9" x 14'4"	225 sq. ft	Yes
3	Dining Area	10'7" x 16'1"	171 sq. ft	Yes
4	Breakfast Nook	9'4" x 16'9"	157 sq. ft	Yes
5	Living Room	10'5" x 11'11"	124 sq. ft	Yes
6	Kitchen	11'0" x 12'7"	138 sq. ft	Yes
7	Foyer	6'11" x 13'11"	96 sq. ft	Yes
8	Laundry	7'11" x 4'2"	33 sq. ft	Yes

Home data report

30 Emily Street, Carleton Place, Lanark County, Ontario, Canada,
K7C 1S2



Room dimensions

Floor 2

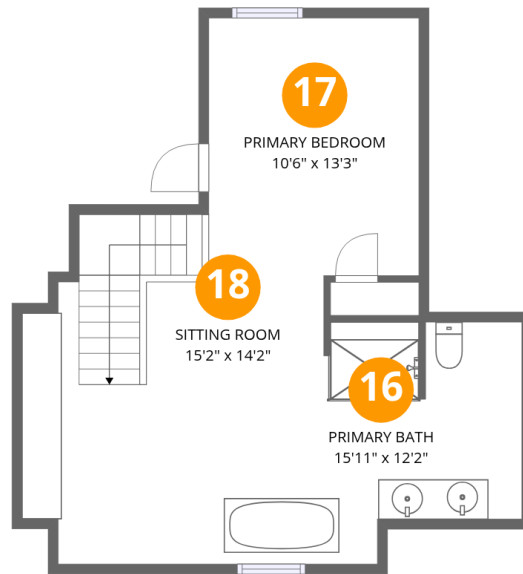
Total:720sqft

Excluded: 148sqft

#		Dimensions	sqft	Counted as living area
9	Bath	8'10" x 6'7"	59 sq. ft	Yes
10	W.I.C.	3'9" x 4'3"	16 sq. ft	Yes
11	Hall	7'0" x 18'5"	128 sq. ft	Yes
12	Bedroom	20'5" x 10'2"	208 sq. ft	Yes
13	Bedroom	10'5" x 11'6"	120 sq. ft	Yes
14	Bedroom	10'4" x 11'6"	119 sq. ft	Yes
15	Rooftop Deck	10'10" x 13'3"	144 sq. ft	No

Home data report

30 Emily Street, Carleton Place, Lanark County, Ontario, Canada, K7C 1S2



Room dimensions

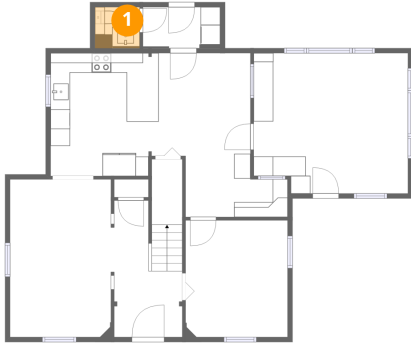
Floor 3

Total:378sqft

Excluded: 105sqft

#		Dimensions	sqft	Counted as living area
16	Primary Bath	15'11" x 12'2"	193 sq. ft	Yes
17	Primary Bedroom	10'6" x 13'3"	139 sq. ft	Yes
18	Sitting Room	15'2" x 14'2"	214 sq. ft	Yes

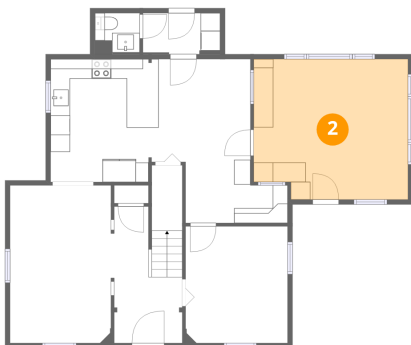
1 Floor 1 - Bath



Dimensions: 4'7" x 4'0"
Area: 18 sq. ft
Counted as living area: Yes

Heated: Yes
Finished: Yes
Enclosed: Yes
Contiguous: Yes
Permitted: Yes
Wet space: Yes
Addition: No
Conversion: No

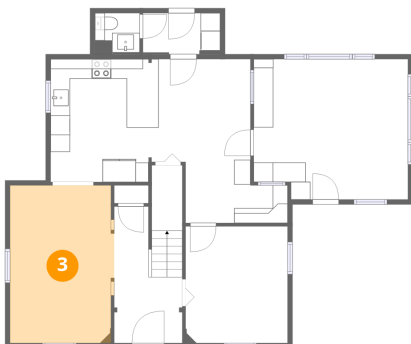
2 Floor 1 - Family Room



Dimensions: 15'9" x 14'4"
Area: 225 sq. ft
Counted as living area: Yes

Heated: Yes
Finished: Yes
Enclosed: Yes
Contiguous: Yes
Permitted: Yes
Wet space: No
Addition: No
Conversion: No

3 Floor 1 - Dining Area



Dimensions: 10'7" x 16'1"
Area: 171 sq. ft
Counted as living area: Yes

Heated: Yes
Finished: Yes
Enclosed: Yes
Contiguous: Yes
Permitted: Yes
Wet space: No
Addition: No
Conversion: No

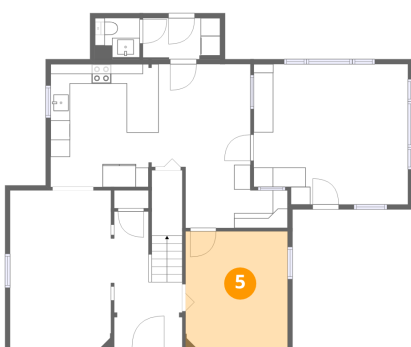
4 Floor 1 - Breakfast Nook



Dimensions: 9'4" x 16'9"
Area: 157 sq. ft
Counted as living area: Yes

Heated: Yes
Finished: Yes
Enclosed: Yes
Contiguous: Yes
Permitted: Yes
Wet space: No
Addition: No
Conversion: No

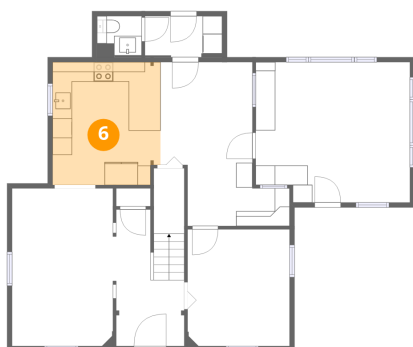
5 Floor 1 - Living Room



Dimensions: 10'5" x 11'11"
Area: 124 sq. ft
Counted as living area: Yes

Heated: Yes
Finished: Yes
Enclosed: Yes
Contiguous: Yes
Permitted: Yes
Wet space: No
Addition: No
Conversion: No

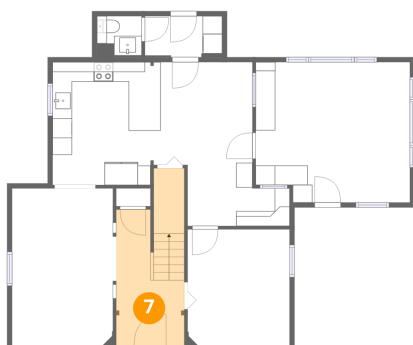
6 Floor 1 - Kitchen



Dimensions: 11'0" x 12'7"
Area: 138 sq. ft
Counted as living area: Yes

Heated: Yes
Finished: Yes
Enclosed: Yes
Contiguous: Yes
Permitted: Yes
Wet space: No
Addition: No
Conversion: No

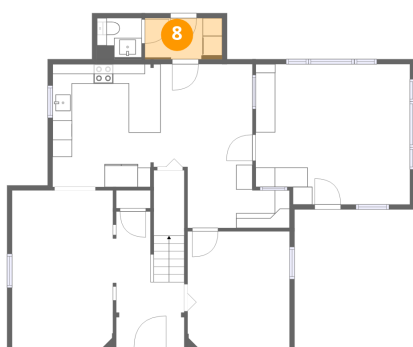
7 Floor 1 - Foyer



Dimensions: 6'11" x 13'11"
Area: 96 sq. ft
Counted as living area: Yes

Heated: Yes
Finished: Yes
Enclosed: Yes
Contiguous: Yes
Permitted: Yes
Wet space: No
Addition: No
Conversion: No

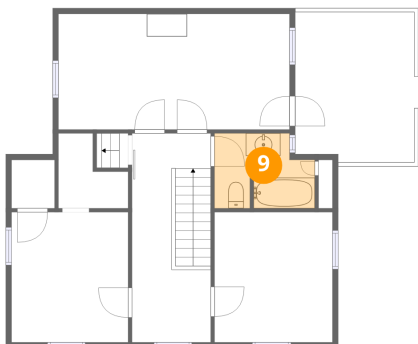
8 Floor 1 - Laundry



Dimensions: 7'11" x 4'2"
Area: 33 sq. ft
Counted as living area: Yes

Heated: Yes
Finished: Yes
Enclosed: Yes
Contiguous: Yes
Permitted: Yes
Wet space: No
Addition: No
Conversion: No

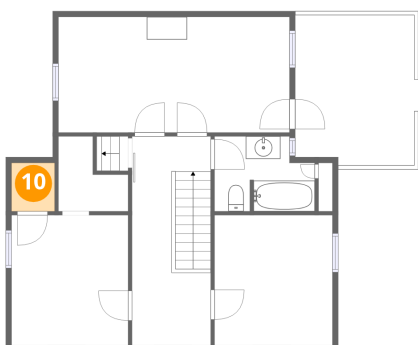
9 Floor 2 - Bath



Dimensions: 8'10" x 6'7"
Area: 59 sq. ft
Counted as living area: Yes

Heated: Yes
Finished: Yes
Enclosed: Yes
Contiguous: Yes
Permitted: Yes
Wet space: Yes
Addition: No
Conversion: No

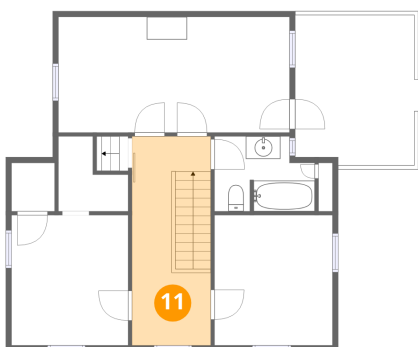
10 Floor 2 - W.I.C.



Dimensions: 3'9" x 4'3"
Area: 16 sq. ft
Counted as living area: Yes

Heated: Yes
Finished: Yes
Enclosed: Yes
Contiguous: Yes
Permitted: Yes
Wet space: No
Addition: No
Conversion: No

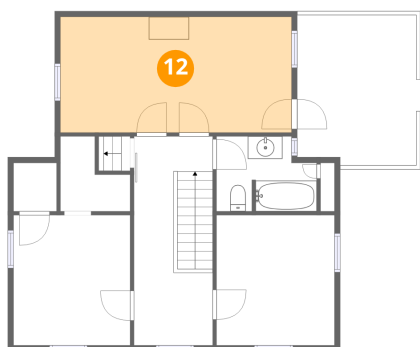
11 Floor 2 - Hall



Dimensions: 7'0" x 18'5"
Area: 128 sq. ft
Counted as living area: Yes

Heated: Yes
Finished: Yes
Enclosed: Yes
Contiguous: Yes
Permitted: Yes
Wet space: No
Addition: No
Conversion: No

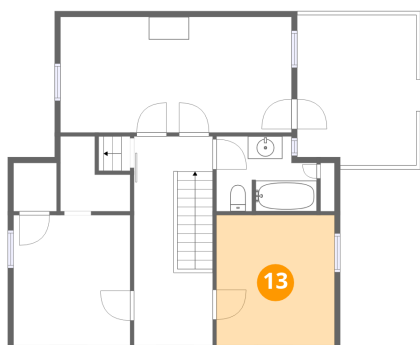
12 Floor 2 - Bedroom



Dimensions: 20'5" x 10'2"
Area: 208 sq. ft
Counted as living area: Yes

Heated: Yes
Finished: Yes
Enclosed: Yes
Contiguous: Yes
Permitted: Yes
Wet space: No
Addition: No
Conversion: No

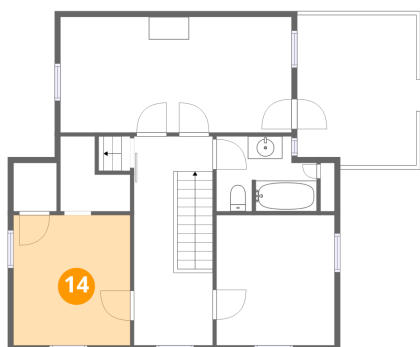
13 Floor 2 - Bedroom



Dimensions: 10'5" x 11'6"
Area: 120 sq. ft
Counted as living area: Yes

Heated: Yes
Finished: Yes
Enclosed: Yes
Contiguous: Yes
Permitted: Yes
Wet space: No
Addition: No
Conversion: No

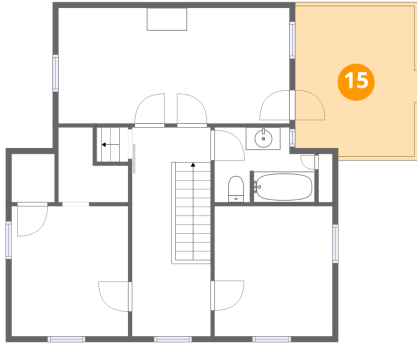
14 Floor 2 - Bedroom



Dimensions: 10'4" x 11'6"
Area: 119 sq. ft
Counted as living area: Yes

Heated: Yes
Finished: Yes
Enclosed: Yes
Contiguous: Yes
Permitted: Yes
Wet space: No
Addition: No
Conversion: No

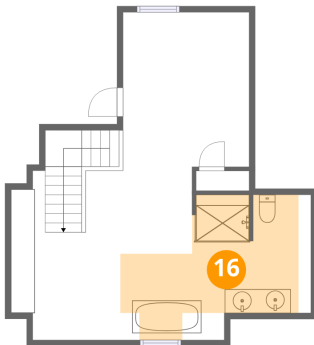
15 Floor 2 - Rooftop Deck



Dimensions: 10'10" x 13'3"
Area: 144 sq. ft
Counted as living area: No

Heated: No
Finished: No
Enclosed: No
Contiguous: Yes
Permitted: Yes
Wet space: No
Addition: No
Conversion: No

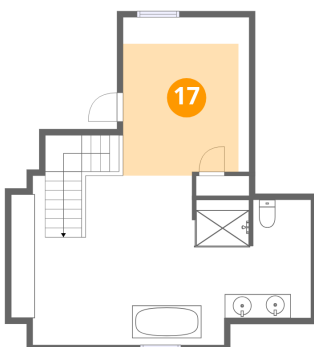
16 Floor 3 - Primary Bath



Dimensions: 15'11" x 12'2"
Area: 193 sq. ft
Counted as living area: Yes

Heated: Yes
Finished: Yes
Enclosed: Yes
Contiguous: Yes
Permitted: Yes
Wet space: Yes
Addition: No
Conversion: No

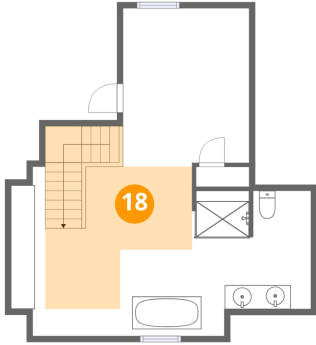
17 Floor 3 - Primary Bedroom



Dimensions: 10'6" x 13'3"
Area: 139 sq. ft
Counted as living area: Yes

Heated: Yes
Finished: Yes
Enclosed: Yes
Contiguous: Yes
Permitted: Yes
Wet space: No
Addition: No
Conversion: No

18 Floor 3 - Sitting Room



Dimensions: 15'2" x 14'2"
Area: 214 sq. ft
Counted as living area: Yes

Heated: Yes
Finished: Yes
Enclosed: Yes
Contiguous: Yes
Permitted: Yes
Wet space: No
Addition: No
Conversion: No