

Home data report

5450 Francis Shores, Honeoye, NY, US




Total Area: 1899 sq. ft

Basement: 778 sq. ft, 1st Floor: 1121 sq. ft

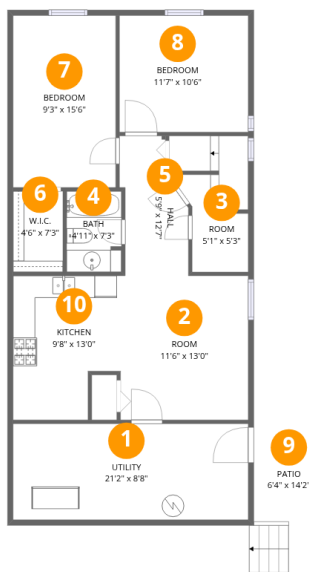
Excluded: Utility 183 sq. ft, Patio 76 sq. ft, Porch 482 sq. ft, Walls: 140 sq. ft

Property summary

 **2** Floors

 **5** Bedrooms

 **2** Bathrooms



Room dimensions

Floor 1 Below grade

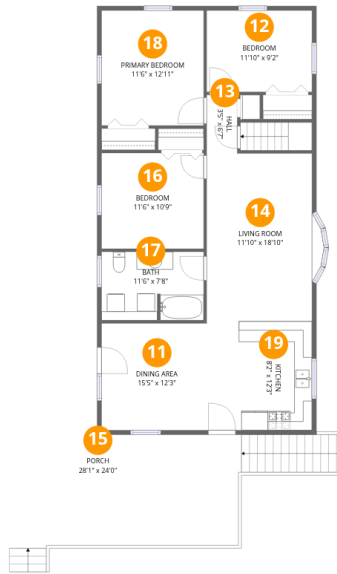
Total:778sqft

Excluded: 259sqft

#		Dimensions	sqft	Counted as living area
1	Utility	21'2" x 8'8"	183 sq. ft	No
2	Room	11'6" x 13'0"	149 sq. ft	Yes
3	Room	5'1" x 5'3"	27 sq. ft	Yes
4	Bath	4'11" x 7'3"	36 sq. ft	Yes
5	Hall	5'9" x 12'7"	72 sq. ft	Yes
6	W.I.C.	4'6" x 7'3"	33 sq. ft	Yes
7	Bedroom	9'3" x 15'6"	143 sq. ft	Yes
8	Bedroom	11'7" x 10'6"	122 sq. ft	Yes
9	Patio	6'4" x 14'2"	90 sq. ft	No
10	Kitchen	9'8" x 13'0"	126 sq. ft	Yes

Home data report

5450 Francis Shores, Honeoye, NY, US



Room dimensions

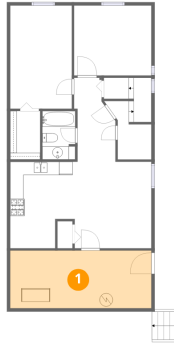
Floor 2

Total: 1121 sqft

Excluded: 482 sqft

#		Dimensions	sqft	Counted as living area
11	Dining Area	15'5" x 12'3"	189 sq. ft	Yes
12	Bedroom	11'10" x 9'2"	108 sq. ft	Yes
13	Hall	3'5" x 6'7"	23 sq. ft	Yes
14	Living Room	11'10" x 18'10"	223 sq. ft	Yes
15	Porch	28'1" x 24'0"	675 sq. ft	No
16	Bedroom	11'6" x 10'9"	123 sq. ft	Yes
17	Bath	11'6" x 7'8"	88 sq. ft	Yes
18	Primary Bedroom	11'6" x 12'11"	148 sq. ft	Yes
19	Kitchen	8'2" x 12'3"	100 sq. ft	Yes

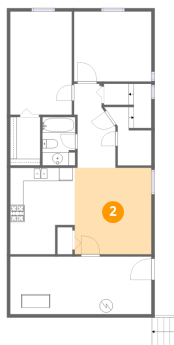
1 Floor 1 - Utility



Dimensions: 21'2" x 8'8"
Area: 183 sq. ft
Counted as living area: No

Heated: Yes
Finished: No
Enclosed: Yes
Contiguous: Yes
Permitted: Yes
Wet space: No
Addition: No
Conversion: No

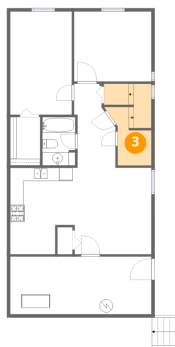
2 Floor 1 - Room



Dimensions: 11'6" x 13'0"
Area: 149 sq. ft
Counted as living area: Yes

Heated: Yes
Finished: Yes
Enclosed: Yes
Contiguous: Yes
Permitted: Yes
Wet space: No
Addition: No
Conversion: No

3 Floor 1 - Room



Dimensions: 5'1" x 5'3"
Area: 27 sq. ft
Counted as living area: Yes

Heated: Yes
Finished: Yes
Enclosed: Yes
Contiguous: Yes
Permitted: Yes
Wet space: No
Addition: No
Conversion: No

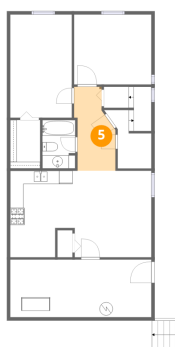
4 Floor 1 - Bath



Dimensions: 4'11" x 7'3"
Area: 36 sq. ft
Counted as living area: Yes

Heated: Yes
Finished: Yes
Enclosed: Yes
Contiguous: Yes
Permitted: Yes
Wet space: Yes
Addition: No
Conversion: No

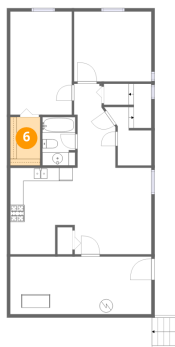
5 Floor 1 - Hall



Dimensions: 5'9" x 12'7"
Area: 72 sq. ft
Counted as living area: Yes

Heated: Yes
Finished: Yes
Enclosed: Yes
Contiguous: Yes
Permitted: Yes
Wet space: No
Addition: No
Conversion: No

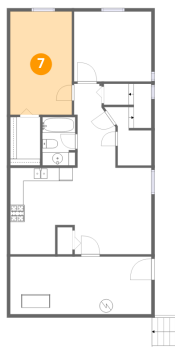
6 Floor 1 - W.I.C.



Dimensions: 4'6" x 7'3"
Area: 33 sq. ft
Counted as living area: Yes

Heated: Yes
Finished: Yes
Enclosed: Yes
Contiguous: Yes
Permitted: Yes
Wet space: No
Addition: No
Conversion: No

7 Floor 1 - Bedroom



Dimensions: 9'3" x 15'6"
Area: 143 sq. ft
Counted as living area: Yes

Heated: Yes
Finished: Yes
Enclosed: Yes
Contiguous: Yes
Permitted: Yes
Wet space: No
Addition: No
Conversion: No

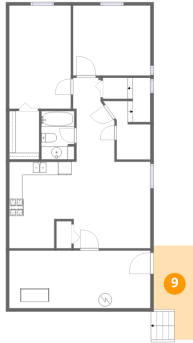
8 Floor 1 - Bedroom



Dimensions: 11'7" x 10'6"
Area: 122 sq. ft
Counted as living area: Yes

Heated: Yes
Finished: Yes
Enclosed: Yes
Contiguous: Yes
Permitted: Yes
Wet space: No
Addition: No
Conversion: No

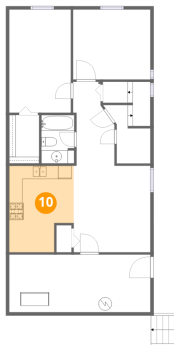
9 Floor 1 - Patio



Dimensions: 6'4" x 14'2"
Area: 90 sq. ft
Counted as living area: No

Heated: No
Finished: No
Enclosed: No
Contiguous: Yes
Permitted: Yes
Wet space: No
Addition: No
Conversion: No

10 Floor 1 - Kitchen



Dimensions: 9'8" x 13'0"
Area: 126 sq. ft
Counted as living area: Yes

Heated: Yes
Finished: Yes
Enclosed: Yes
Contiguous: Yes
Permitted: Yes
Wet space: No
Addition: No
Conversion: No

11 Floor 2 - Dining Area



Dimensions: 15'5" x 12'3"
Area: 189 sq. ft
Counted as living area: Yes

Heated: Yes
Finished: Yes
Enclosed: Yes
Contiguous: Yes
Permitted: Yes
Wet space: No
Addition: No
Conversion: No

12 Floor 2 - Bedroom



Dimensions: 11'10" x 9'2"
Area: 108 sq. ft
Counted as living area: Yes

Heated: Yes
Finished: Yes
Enclosed: Yes
Contiguous: Yes
Permitted: Yes
Wet space: No
Addition: No
Conversion: No

13 Floor 2 - Hall



Dimensions: 3'5" x 6'7"
Area: 23 sq. ft
Counted as living area: Yes

Heated: Yes
Finished: Yes
Enclosed: Yes
Contiguous: Yes
Permitted: Yes
Wet space: No
Addition: No
Conversion: No

14 Floor 2 - Living Room



Dimensions: 11'10" x 18'10"
Area: 223 sq. ft
Counted as living area: Yes

Heated: Yes
Finished: Yes
Enclosed: Yes
Contiguous: Yes
Permitted: Yes
Wet space: No
Addition: No
Conversion: No

15 Floor 2 - Porch



Dimensions: 28'1" x 24'0"
Area: 675 sq. ft
Counted as living area: No

Heated: No
Finished: No
Enclosed: No
Contiguous: Yes
Permitted: Yes
Wet space: No
Addition: No
Conversion: No

16 Floor 2 - Bedroom



Dimensions: 11'6" x 10'9"
Area: 123 sq. ft
Counted as living area: Yes

Heated: Yes
Finished: Yes
Enclosed: Yes
Contiguous: Yes
Permitted: Yes
Wet space: No
Addition: No
Conversion: No

17 Floor 2 - Bath



Dimensions: 11'6" x 7'8"
Area: 88 sq. ft
Counted as living area: Yes

Heated: Yes
Finished: Yes
Enclosed: Yes
Contiguous: Yes
Permitted: Yes
Wet space: Yes
Addition: No
Conversion: No

18 Floor 2 - Primary Bedroom



Dimensions: 11'6" x 12'11"
Area: 148 sq. ft
Counted as living area: Yes

Heated: Yes
Finished: Yes
Enclosed: Yes
Contiguous: Yes
Permitted: Yes
Wet space: No
Addition: No
Conversion: No

19 Floor 2 - Kitchen



Dimensions: 8'2" x 12'3"
Area: 100 sq. ft
Counted as living area: Yes

Heated: Yes
Finished: Yes
Enclosed: Yes
Contiguous: Yes
Permitted: Yes
Wet space: No
Addition: No
Conversion: No